

Notch NRR sequence alignments

		LNR-A	LNR-B...
human N1	/1447	EEACELPECOEDAGNKVCSLQCNNHACGWDGGDCSLNFNDFWKNC	TQSLQCWKYFSDGHC
human N2	/1422	PATCLSQYCADKARDGVCEACNSHACQWDGGDCSLTMENFWANCSSFLPCWDYINN	.QC
human N3	/1384	EPRCPRAACQAKRGDQRCRECNSPGCGWDGGDCSLVGD PWRQCEA	.LQCWRLFNNSRC
human N4	/1171	.QKPGAKGCEGRSGDGACDAGCSGPGGNWDGGDCSLGVPDPWKGCPSHSRCWLLFRDGC	QC
mouse N3	/1385	EPRCPRAACQAKRGDQNCRECNTPGCGWDGGDCSLNVDD PWRQCEA	.LQCWRLFNNSRC
rat N3	/1386	EPRCPRAACQAKRGDQNCRECNTPGCGWDGGDCSLNVDD PWRQCEA	.LQCWRLFNNSRC
zebrafish N3	/1389	BSPCPIADCFKANDGVCDKECNSLDCRWDGGDCSLAVN	.PWARCAD.PRCWRLFNNSRC
LNR-C			
human N1	/1507	DSQCNSAGCLFDGFDQR..AEGQCNP LYDQYCKDHFSDGHCDQGCNSAECEWDGLDCAE	
human N2	/1481	DELCNTVECLFDNFECQG..NSKTKK..YDKYCADHFKDNHCDQGCNSEECGWDGLDCAA	
human N3	/1443	DPACSSPACLYDNFDCHAGGRERTCNFVYEKYPADHFADGRCDQGCNTEECGWDGLDCAS	
human N4	/1230	HPQCDSEECFLFDGYDCET..PPACTPAYDQYCHDFHNGHCEKGCNTAECGWDGGDCRP	
mouse N3	/1444	DPACSSPACLYDNFDQYSGGRDRTCNFVYEKYPADHFADGRCDQGCNTEECGWDGLDCAS	
rat N3	/1445	DPACSSPACLYDNFDQYSGGRDRTCNFVYKYPADHFADGRCDQGCNTEECGWDGLDCAS	
zebrafish N3	/1447	DEFCNNAECLFDNFDCIN..KEKVCNPIYEAYCTDHYADGLCDQGCNTEECGWDGLDCAR	
β1 α1 β2 β3			
human N1	/1565	HVPERLAAGTLVVVLMPPPEQLRNSSFHFLRELSRVLHTNVVFKRDAHQQMIFPYYGRE	
human N2	/1537	DQPENLAEGTLVIVVLMPPPEQLLQDARSFLRALGTLHTNLRIRKRSQGELMVYPYYGEK	
human N3	/1503	EVPALLARGVVLTVLLPPEELLRSSADFLQRLSAILRTSLRFRDLAHGQAMVFPYHRPS	
human N4	/1287	EDGDPWGPSSLALLVVLSPALDQQLFALARVLSLTLRVGLWVRKDRDRDGMVYPYPGAR	
mouse N3	/1504	EVPALLARGVVLTVLLPPEELLRSSADFLQRLSAILRTSLRFRDLARGQAMVFPYHRPS	
rat N3	/1505	EVPALLARGVVLTVLLPPEELLRSSADFLQRLSAILRTSLRFRDLARGQAMVFPYHRPS	
zebrafish N3	/1505	KIPEDLAEDMLVIVVLLPPEELLRTQTAFLQKLSAILRTTLRFRDLRNGDYMIRPYT...	
S1			
human N1	/1625	EELRKHPKRAEAGWAAPDALLGQVKASLLPGGSEGGRRRRELDP...MDVRGSIVYLE	β4...
human N2	/1597	SAAMK.....QRMTRRSL.PGEQEQEVAGSKVFLE	
human N3	/1563	PGSEPR.....ARRELAP.....EVIGSVVMLE	
human N4	/1347	AEEKLG.....GTRDPTYQERAAPQTQPLGKETD...SLSAGFVVVMG	
mouse N3	/1564	PGSESR.....VRRELGP.....EVIGSVVMLE	
rat N3	/1565	PGSESR.....VRRELGP.....EVIGSVVMLE	
zebrafish N3	/1562	.GRETR.....IKRELNP.....QEVIGSIVYLE	
S2			
human N1	/1681	IDNRQCVQA..SSQCFQSAIDVAAFLGALASLGSIN..IPYKIEAVQSETVEPPPPAQ	
human N2	/1627	IDNRQCVQD..SDHCFKNTDAAAALLASHAIQGTLS..YPL..VSVSESLTPERTQ.	
Human N3	/1586	IDNRLCLQSPENDHCFPDQAQAADYLGA LSAVERLD..FPYPLRDVRGEPLPEPEPS.	
human N4	/1387	VDLSRCGPDHPASRCPWDPLLLRFLAAMA AVGALEPLLPGPLLAVHPHAGTAPPANQ	
mouse N3	/1587	IDNRLCLQSAENDHCFPDQAQAADYLGA LSAVERLD..FPYPLRDVRGEPLPEPEQS.	
rat N3	/1588	IDNRLCLKSAENDHCFPDQAQAADYLGA LSAVERLD..FPYPLRDVRGEPLPEPEQS.	
zebrafish N3	/1585	IDNRLCSQG..SDDCFRNADSAEAYLGA LSAVERLD..FPYPIKEVTSEKREPSITE.	

Figure S1

Peptide coverage map of Notch3 NRR (Common peptides found from three different sets of experiments).

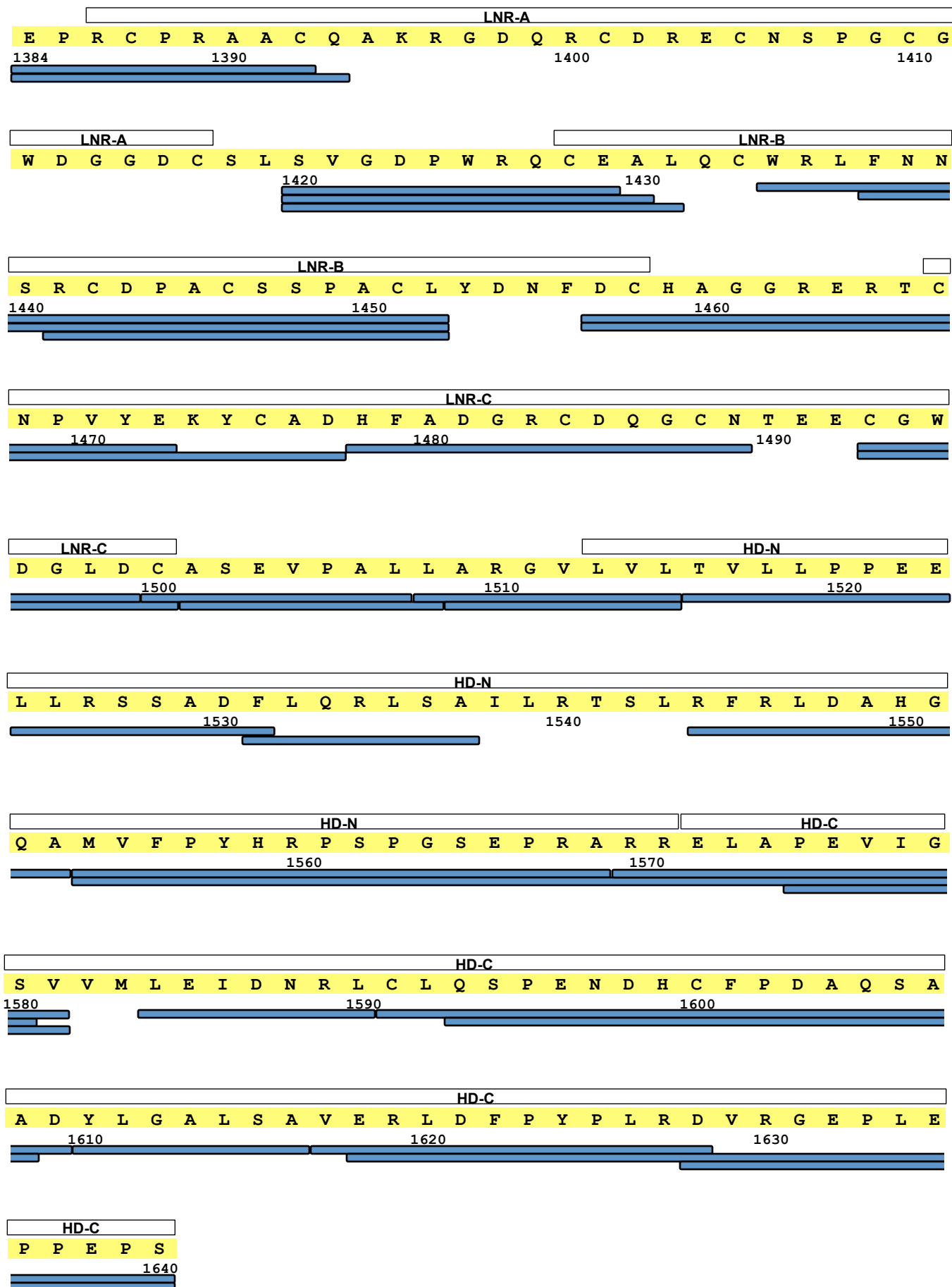


Figure S2

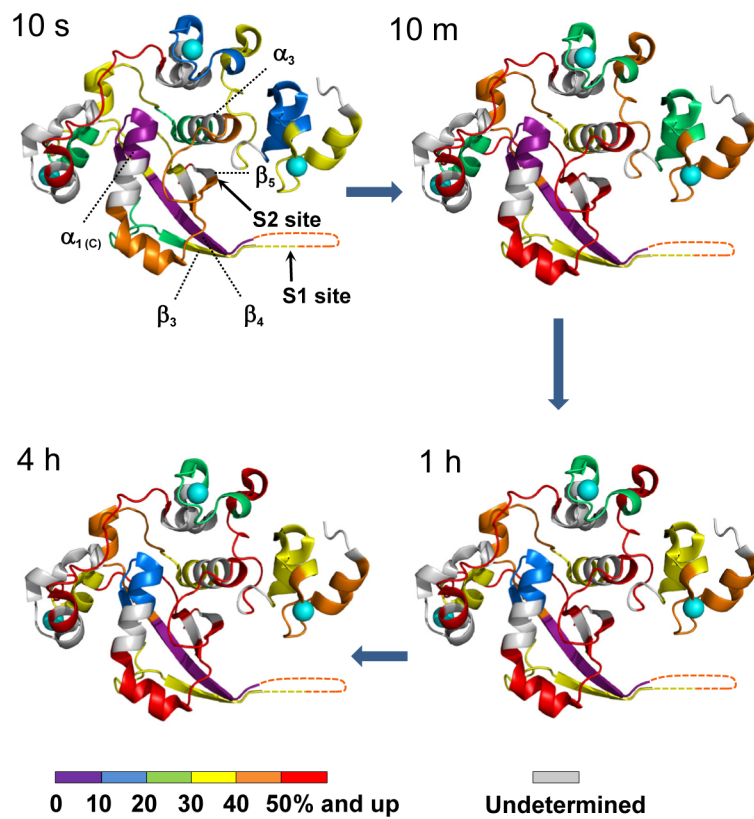
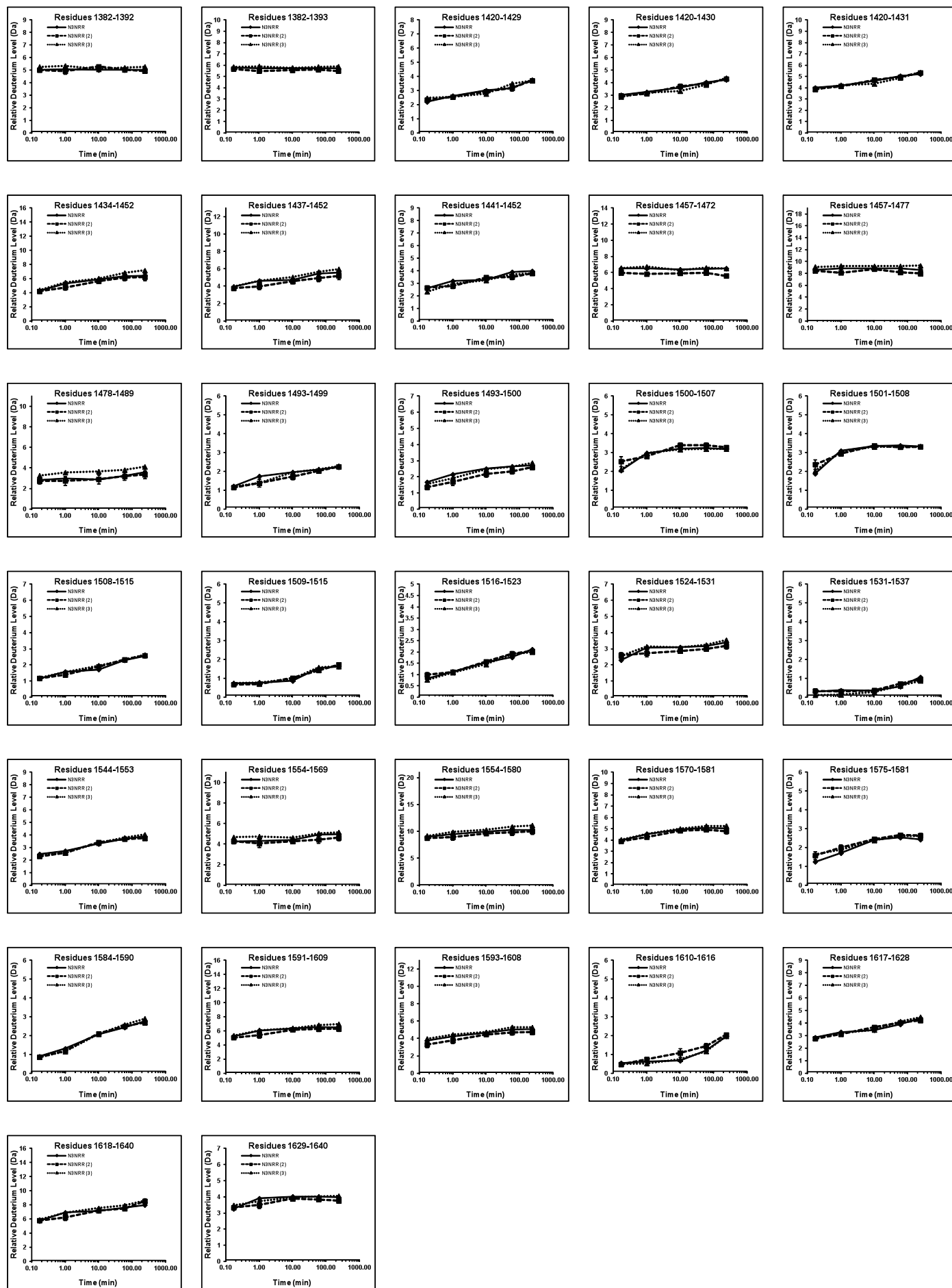
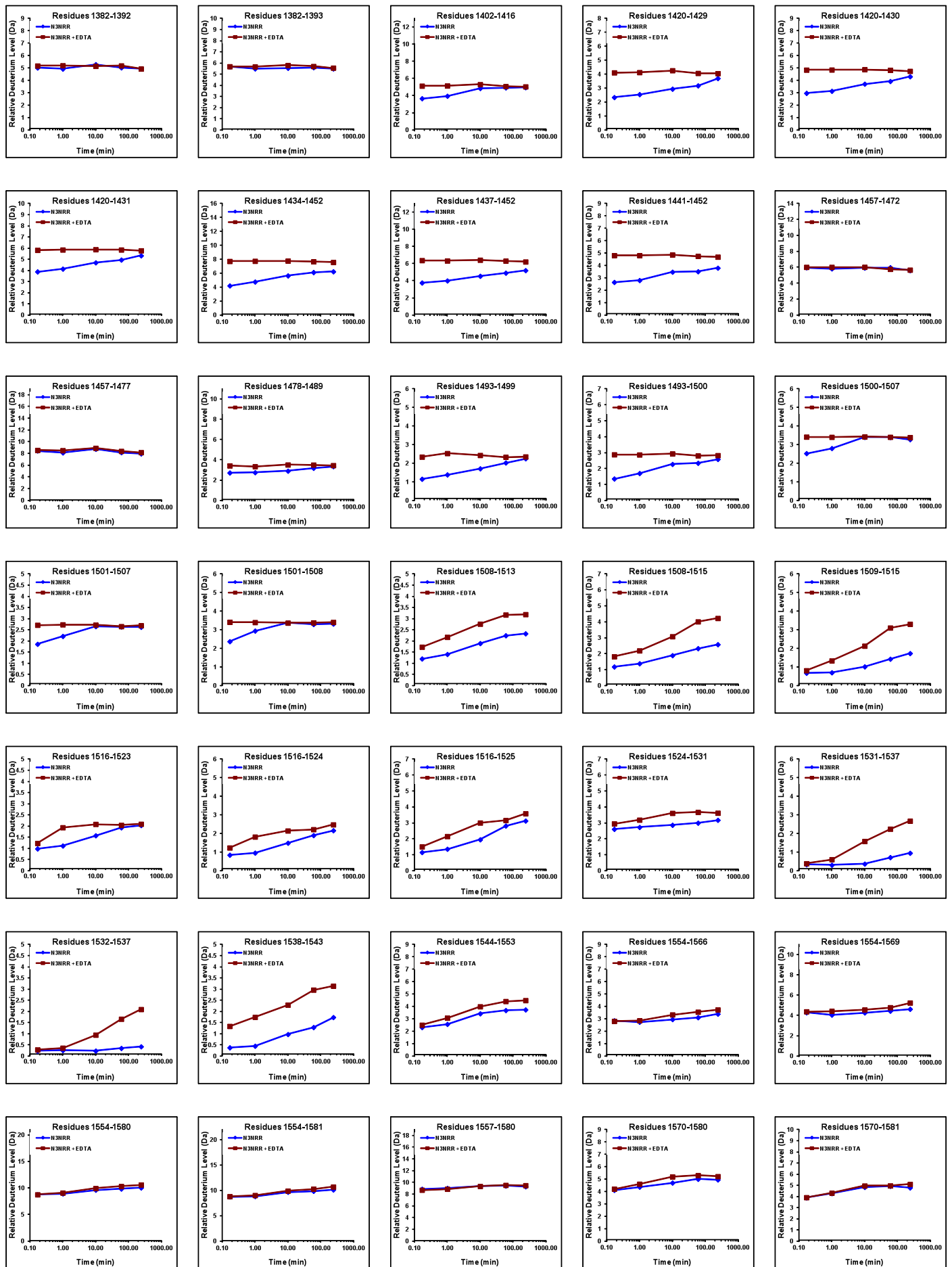
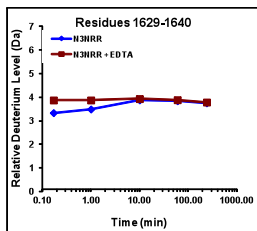
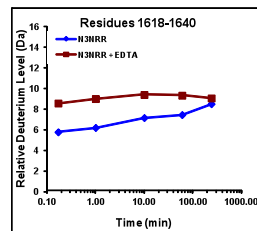
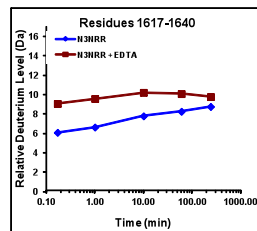
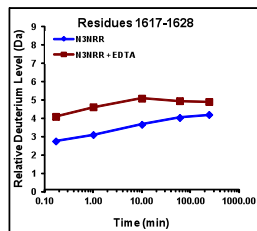
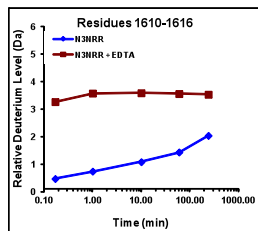
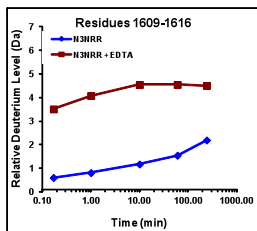
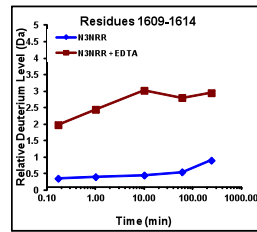
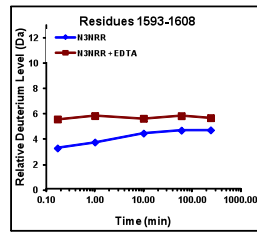
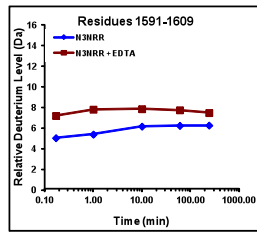
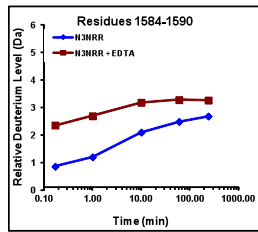
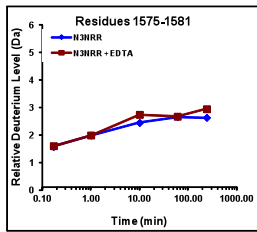
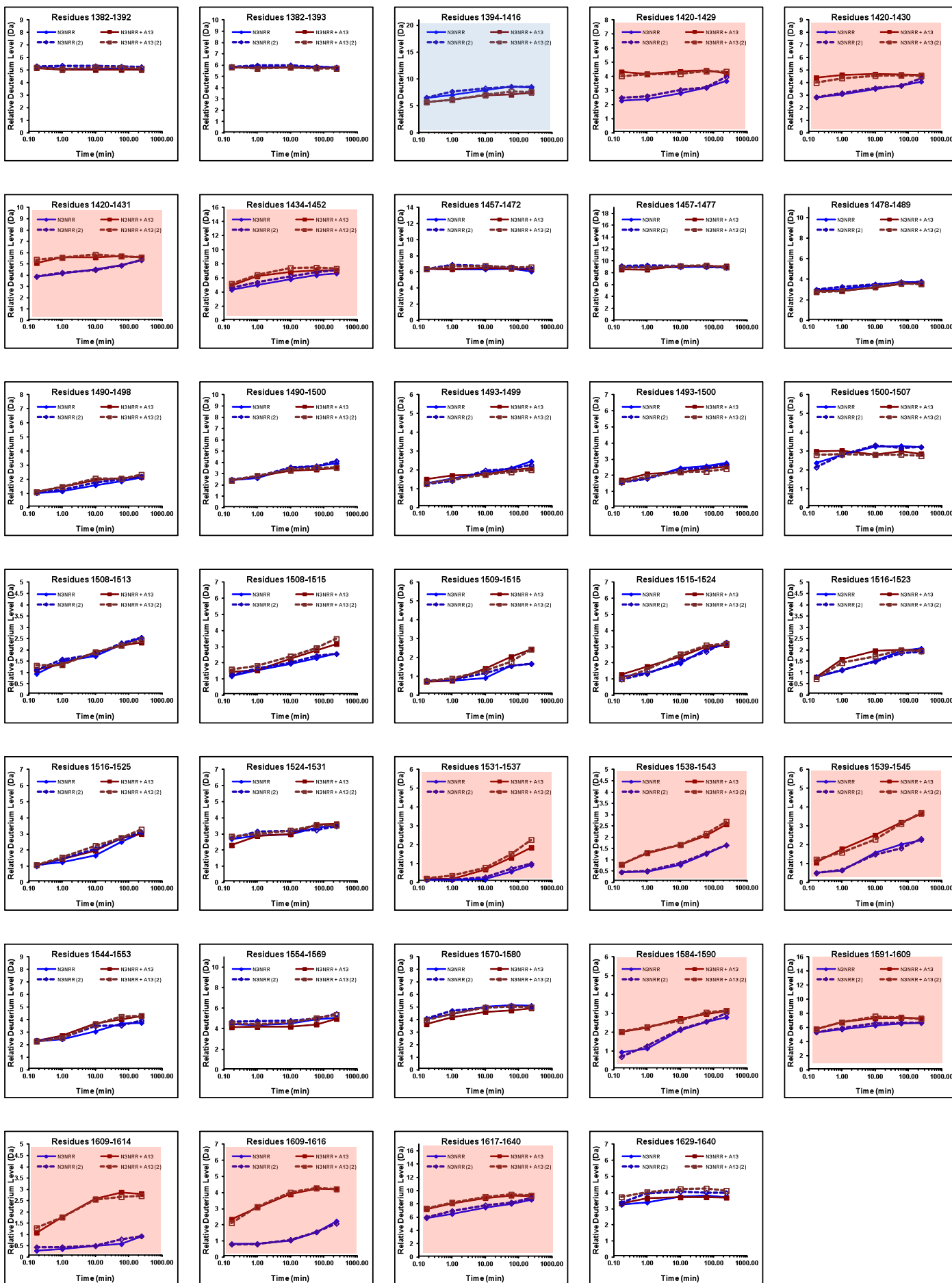


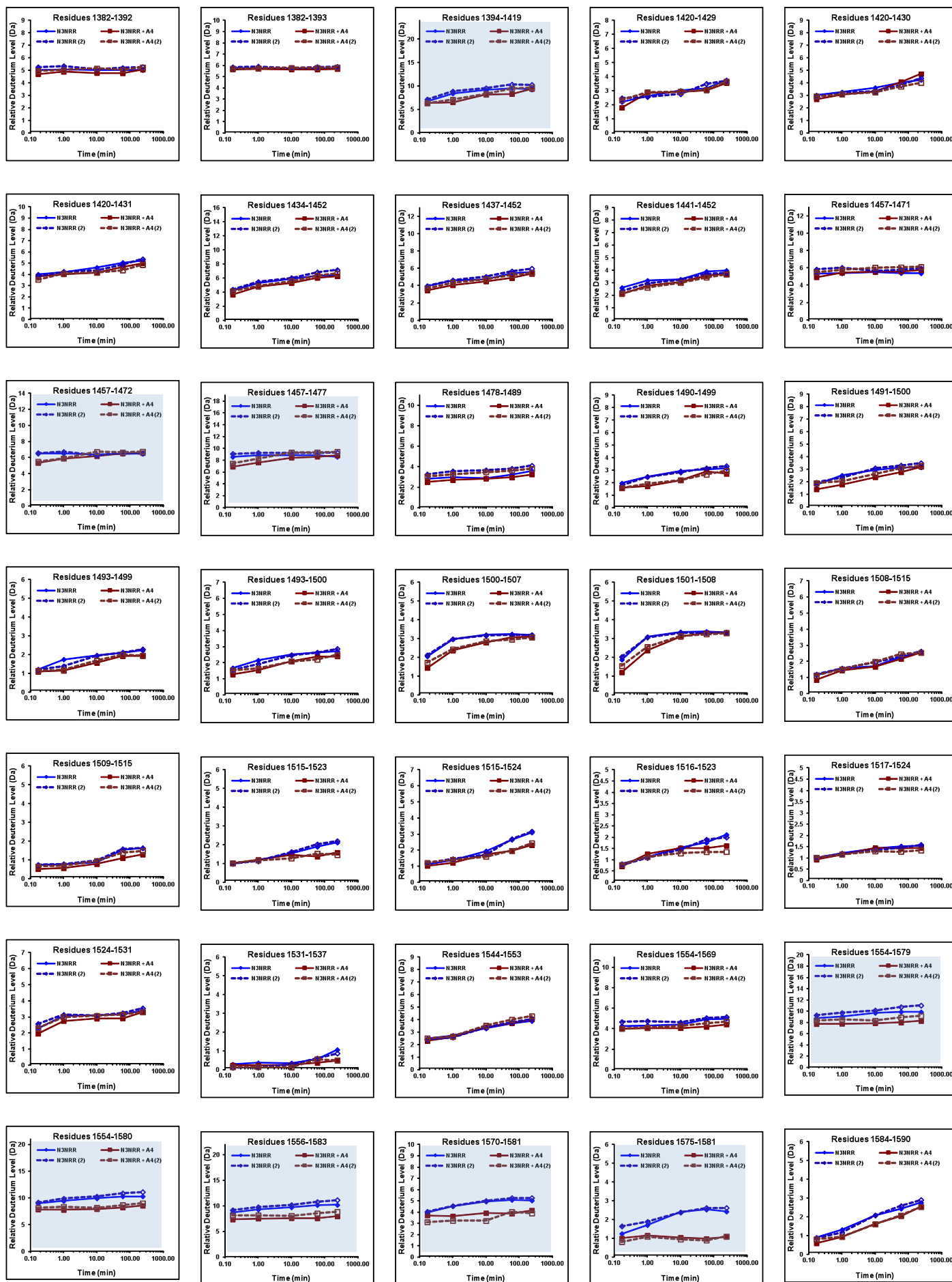
Figure S3

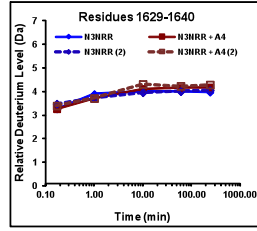
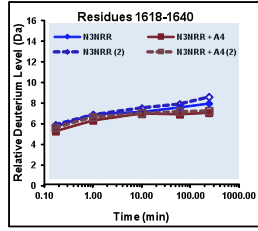
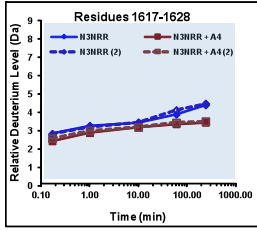
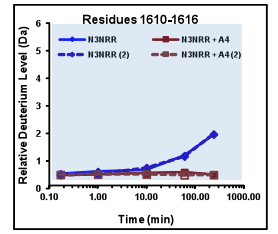
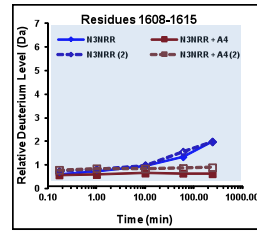
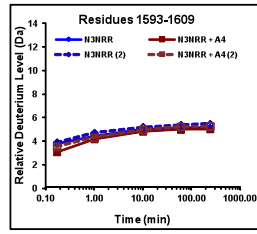
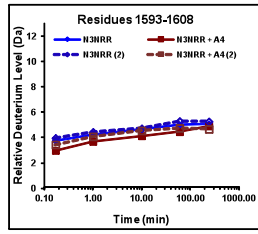
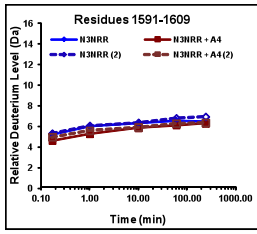




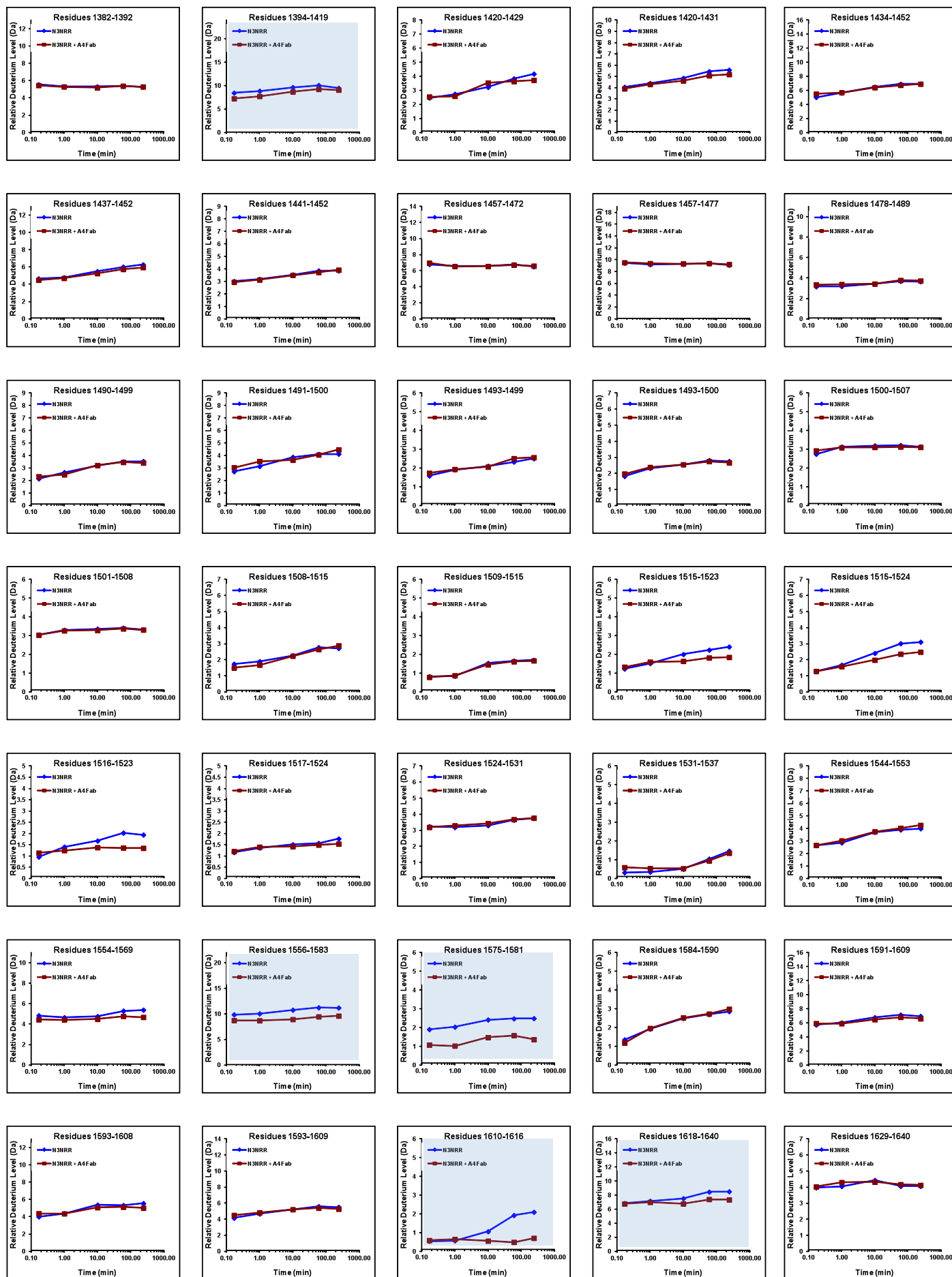








N3NRR vs N3NRR + A4 Fab (Inhibitory Antibody)



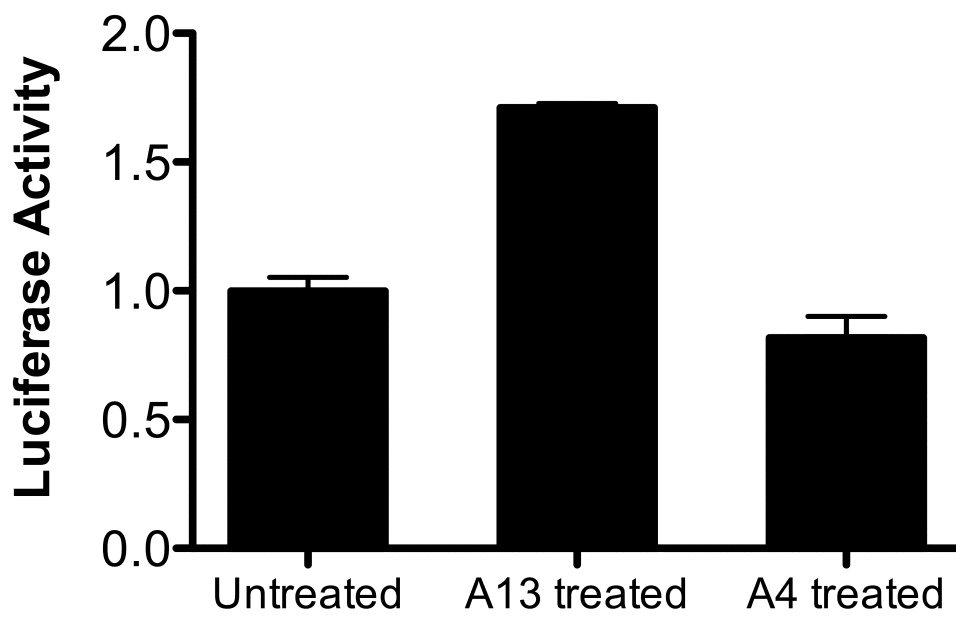


Figure S5

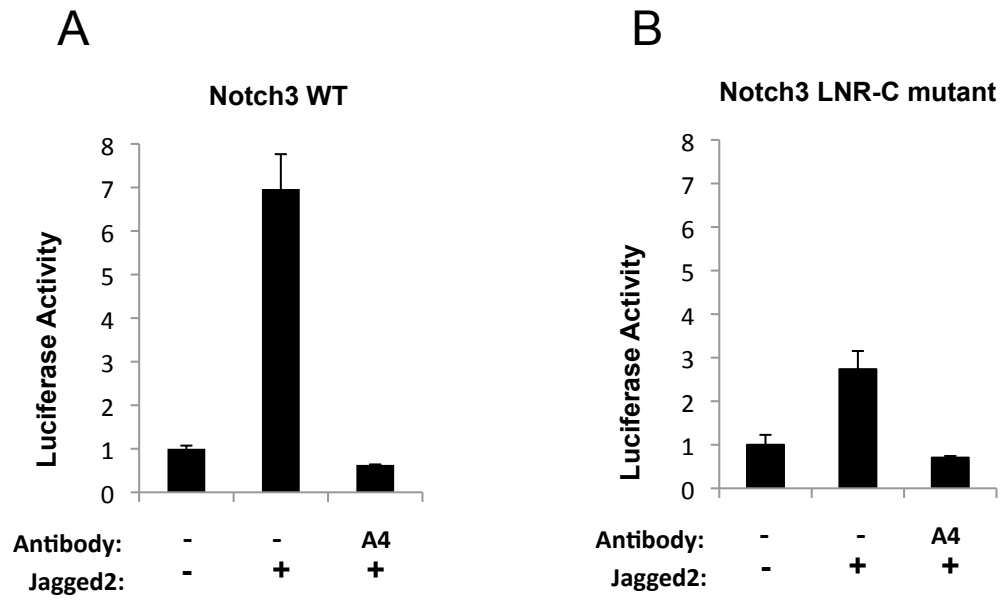


Figure S6