

Supple. Table 1 Immunohistochemical profiles of the biomarkers and reticulin staining in

HCCs

Case No.	Size (cm)	HBV	Differentiation	GP73	GPC3	DCP	CD34	CD31	Reticulin
1	4.5	+	well	Diffuse coarse-block pattern	+	+	+	-	+
2	1.5	-	well	Diffuse coarse-block pattern	+	+	+	-	+
3	2.1	+	well	-	+	-	+	-	+
4	10.5	+	poor	Diffuse coarse-block pattern	-	+	+	-	+
5	2.5	+	poor	Diffuse coarse-block pattern	-	+	+	-	+
6	4.5	+	well	Diffuse coarse-block pattern	+	+	+	-	+
7	3	+	moderate	Diffuse coarse-block pattern	+	-	+	-	+
8	4	+	poor	Diffuse coarse-block pattern	+	+	+	-	+
9	2	+	moderate	-	-	+	+	-	+
10	1	+	well	Cytoplasmic granular pattern	+	+	+	-	+
11	3.5	+	moderate	Diffuse coarse-block pattern	+	-	+	-	+
12	6.5	+	moderate	Diffuse coarse-block pattern	+	+	+	-	+
13	4	+	moderate	Diffuse coarse-block pattern	+	+	+	-	+
14	5.5	+	poor	Diffuse coarse-block pattern	+	+	+	-	+
15	9.5	+	poor	Diffuse coarse-block pattern	+	+	+	-	+

16	4	-	moderate	Diffuse coarse-block pattern	+	-	+	-	+
17	6	+	moderate	Diffuse coarse-block pattern	+	+	+	-	+
18	4	+	poor	Diffuse coarse-block pattern	+	+	+	-	+
19	1.8	+	well	-	+	-	+	-	+
20	3.5	+	moderate	Diffuse coarse-block pattern	+	+	+	-	+
21	14	+	moderate	Diffuse coarse-block pattern	-	+	+	-	+
22	9.5	+	poor	Diffuse coarse-block pattern	-	-	+	-	+
23	1.8	+	well	Cytoplasmic granular pattern	+	-	+	-	+
24	4.7	+	poor	Diffuse coarse-block pattern	-	+	+	-	+
25	9.5	+	moderate	Diffuse coarse-block pattern	+	+	+	-	+
26	7	+	poor	Diffuse coarse-block pattern	+	+	+	-	+
27	7	+	well	Cytoplasmic granular pattern	+	+	+	-	+
28	2.2	+	well	Diffuse coarse-block pattern	+	+	+	-	+
29	10	+	moderate	Diffuse coarse-block pattern	-	-	+	-	+
30	10	+	moderate	Diffuse coarse-block pattern	+	+	+	-	+
31	2.5	+	moderate	Diffuse coarse-block pattern	+	+	+	-	+
32	3.8	+	moderate	Diffuse coarse-block pattern	-	+	+	-	+
33	3	+	poor	Diffuse coarse-block pattern	-	+	+	-	+

				pattern					
34	5.6	-	well	Diffuse coarse-block pattern	+	+	+	-	+
35	2.2	+	well	Diffuse coarse-block pattern	+	+	+	-	+
36	8.3	+	moderate	Diffuse coarse-block pattern	-	+	+	-	+
37	2.4	+	well	Diffuse coarse-block pattern	+	+	+	-	+
38	3.7	+	well	Diffuse coarse-block pattern	+	+	+	-	+
39	4.6	+	well	-	+	+	+	-	+
40	2.1	+	well	Cytoplasmic granular pattern	-	+	Focal +	-	+
41	2.8	+	well	Cytoplasmic granular pattern	+	+	+	-	+
42	4.5	+	well	Diffuse coarse-block pattern	+	+	+	-	+
43	5.2	+	well	Diffuse coarse-block pattern	+	-	+	-	+
44	3.3	+	well	Diffuse coarse-block pattern	+	+	+	-	+
45	2.8	+	well	Diffuse coarse-block pattern	+	+	+	-	+
46	6.5	+	well	-	-	-	Focal +	-	+
47	3.5	+	well	Diffuse coarse-block pattern	+	+	+	-	+
48	5.5	+	well	Cytoplasmic granular pattern	+	+	+	-	+
49	2.2	+	well	Diffuse coarse-block pattern	+	+	+	-	+
50	3.7	-	well	-	-	+	+	-	+
51	4.1	+	well	Diffuse coarse-block pattern	+	+	+	-	+

				pattern					
52	3.6	+	well	Diffuse coarse-block pattern	+	-	+	-	+
53	1.7	+	well	-	+	-	Focal +	-	+
54	4.6	+	well	Diffuse coarse-block pattern	+	+	+	-	+
55	4.2	+	well	Diffuse coarse-block pattern	+	+	+	-	+
56	5.1	+	well	Diffuse coarse-block pattern	+	+	+	-	+
57	6.6	+	well	-	-	-	+	-	+
58	3.9	+	well	Diffuse coarse-block pattern	+	+	+	-	+
59	4.2	+	well	Diffuse coarse-block pattern	+	+	+	-	+
60	1.3	+	well	Diffuse coarse-block pattern	+	+	+	-	+
61	5.2	+	well	Cytoplasmic granular pattern	+	+	+	-	+
62	5.4	+	well	Diffuse coarse-block pattern	+	+	+	-	+
63	4.8	-	well	-	-	+	+	-	+
64	3.4	+	well	Diffuse coarse-block pattern	+	+	+	-	+
65	4.5	+	well	Diffuse coarse-block pattern	+	+	+	-	+

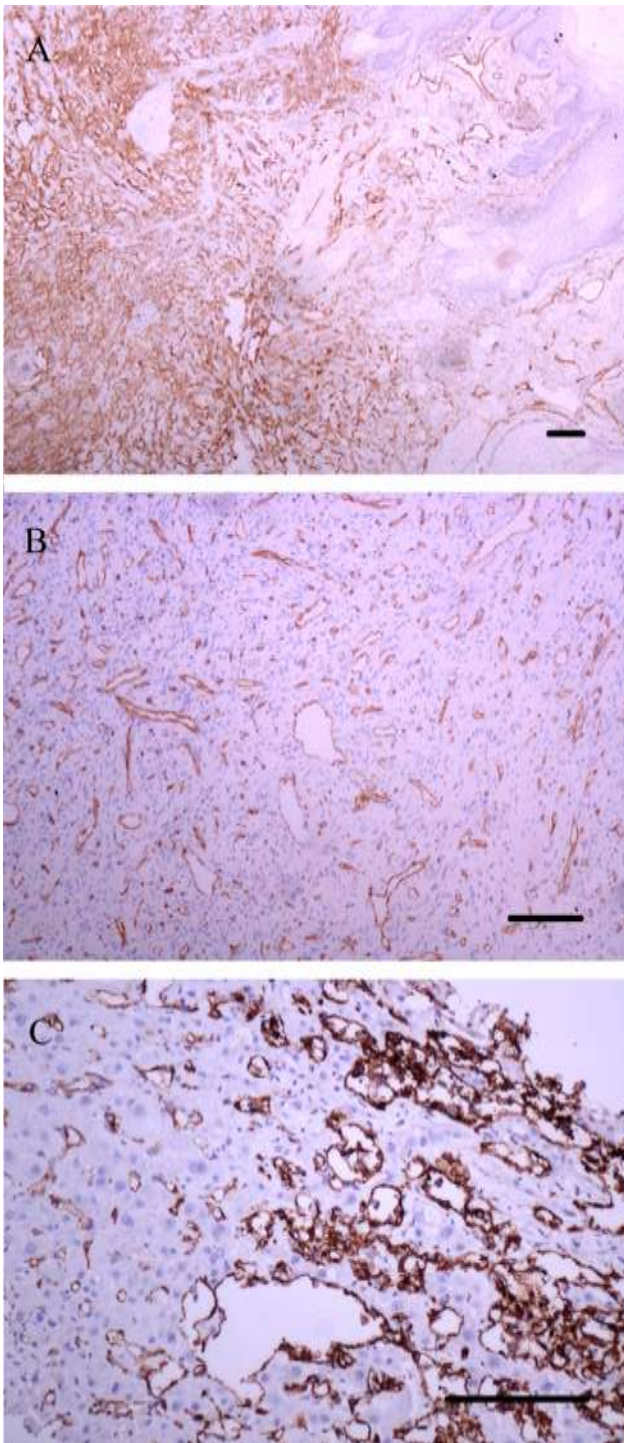
HCC: Hepatocellular carcinoma. [All cases were HCV-](#).

Supple. Table 2 Immunohistochemical profiles of the biomarkers and reticulin staining in nonmalignant neoplastic nodules

Case No.	Size (cm)		HBV	GP73	GPC3	DCP	CD34	CD31	Reticulin
1	3.5	FNH	+	Diffuse coarse-block pattern	-	+	+	-	+
2	1.3	LGDN	-	Diffuse coarse-block pattern	+	+	+	-	-
3	4.0	LRN	-	Cytoplasmic granular pattern	-	-	-	-	-
4	5.2	FNH	-	Diffuse coarse-block pattern	-	+	-	-	-
5	3.6	HGDN	+	Diffuse coarse-block pattern	+	-	Focal +	-	+
6	1.8	LRN	-	Cytoplasmic granular pattern	-	+	-	-	-
7	4.1	LRN	-	Cytoplasmic granular pattern	-	+	+	-	-
8	2.0	HGDN	+	Cytoplasmic granular pattern	-	+	+	-	-
9	4.0	FNH	-	Cytoplasmic granular pattern	+	-	-	-	-
10	5.5	LRN	-	Cytoplasmic granular pattern	-	+	+	-	+
11	3.2	HGDN	+	Cytoplasmic granular pattern	-	+	-	-	-
12	2.2	HGDN	-	Focal coarse-block pattern	+	+	Focal +	-	-
13	4.3	FNH	+	Cytoplasmic granular pattern	+	+	+	-	+
14	3.7	LRN	-	Focal coarse-block pattern	-	+	-	-	-
15	3.1	LCA	-	Cytoplasmic granular pattern	-	-	Focal +	-	-

16	4.5	HGDN	+	Focal coarse-block pattern	-	+	+	-	+
17	1.6	HGDN	+	Cytoplasmic granular pattern	+	+	+	-	-
18	6.4	LGDN	-	Cytoplasmic granular pattern	-	+	-	-	-
19	10.5	FNH	-	Cytoplasmic granular pattern	-	+	-	-	-
20	10.0	LRN	-	-	-	+	+	-	-
21	5.5	FNH	+	Cytoplasmic granular pattern	-	-	-	-	-
22	6.7	LCA	+	Cytoplasmic granular pattern	-	+	-	-	+
23	8.4	LCA	-	-	-	+	-	-	-
24	9.5	FNH	-	Diffuse coarse-block pattern	-	+	+	-	-
25	5.8	FNH	-	-	-	-	-	-	-
26	6.2	HGDN	+	Cytoplasmic granular pattern	+	+	+	-	-
27	4.5	FNH	-	Cytoplasmic granular pattern	-	+	-	-	-
28	3.4	LGDN	+	-	-	-	Focal +	-	+
29	4.8	FNH	-	Focal coarse-block pattern	+	+	-	-	+

FNH: Focal nodular hyperplasia; LGDN: Low-grade dysplastic nodule; LRN: Large regenerative nodule; HGDN: High-grade dysplastic nodule; LCA: Liver cell adenomas. All cases were HCV-.



Suppl. Fig. 1 CD31 immunostaining in vascular tumors. (A) Angiosarcoma (scalp). (B) Hemangioma (orbit). (C) Hemangioendothelioma (liver). Bar = 100 μ m.