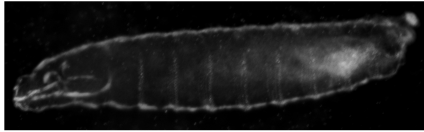
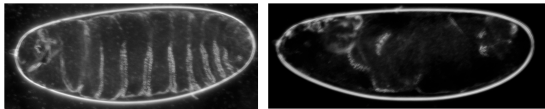


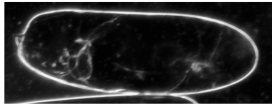
SUPPLEMENTARY FIGURES



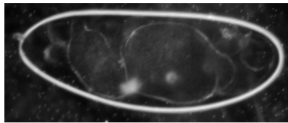
wild-type



moderately dorsalized: D3 (left) and D2 (right)



strongly dorsalized: D1



severely dorsalized: D0

**Figure S1.** The spectrum of embryonic dorsalization phenotypes.

Pictures of embryos representative of the dorsalization phenotypes referred to in this paper. Embryonic phenotypes were scored based on pre-existing scale, D0-D3 and wild-type (Wieschaus and Nüsslein-Volhard 1986).