

## Supporting information

### Surface-Tethered Iterative Carbohydrate Synthesis (STICS): A Spacer Study

N. Vijaya Ganesh,<sup>1</sup> Kohki Fujikawa,<sup>1</sup> Yih Horng Tan,<sup>1,2</sup> Swati S. Nigudkar,<sup>1</sup>  
Keith J. Stine,<sup>1,2,\*</sup> and Alexei V. Demchenko<sup>1,\*</sup>

<sup>1</sup> Department of Chemistry and Biochemistry, University of Missouri – St. Louis, St. Louis, MO  
63121, USA; E-mail: [demchenkoa@umsl.edu](mailto:demchenkoa@umsl.edu)

<sup>2</sup> Center for Nanoscience, University of Missouri – St. Louis, St. Louis, MO 63121, USA;  
E-mail: [kstine@umsl.edu](mailto:kstine@umsl.edu)

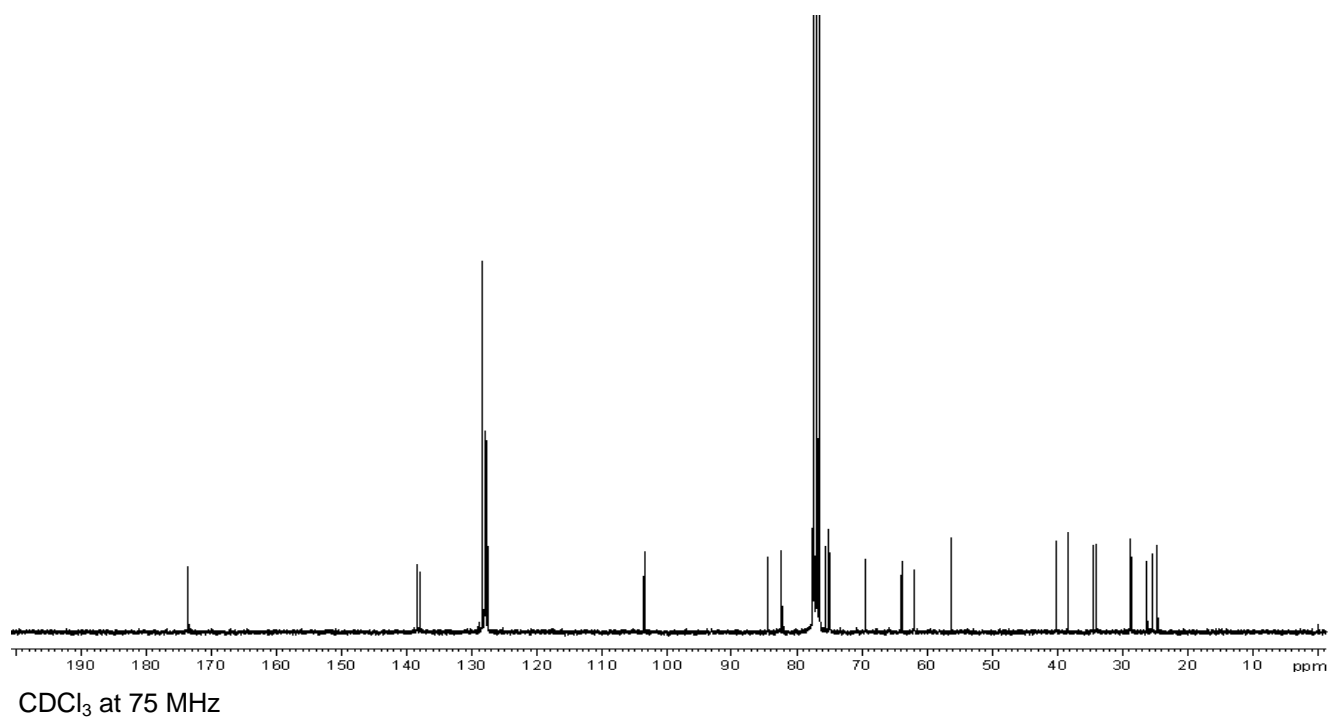
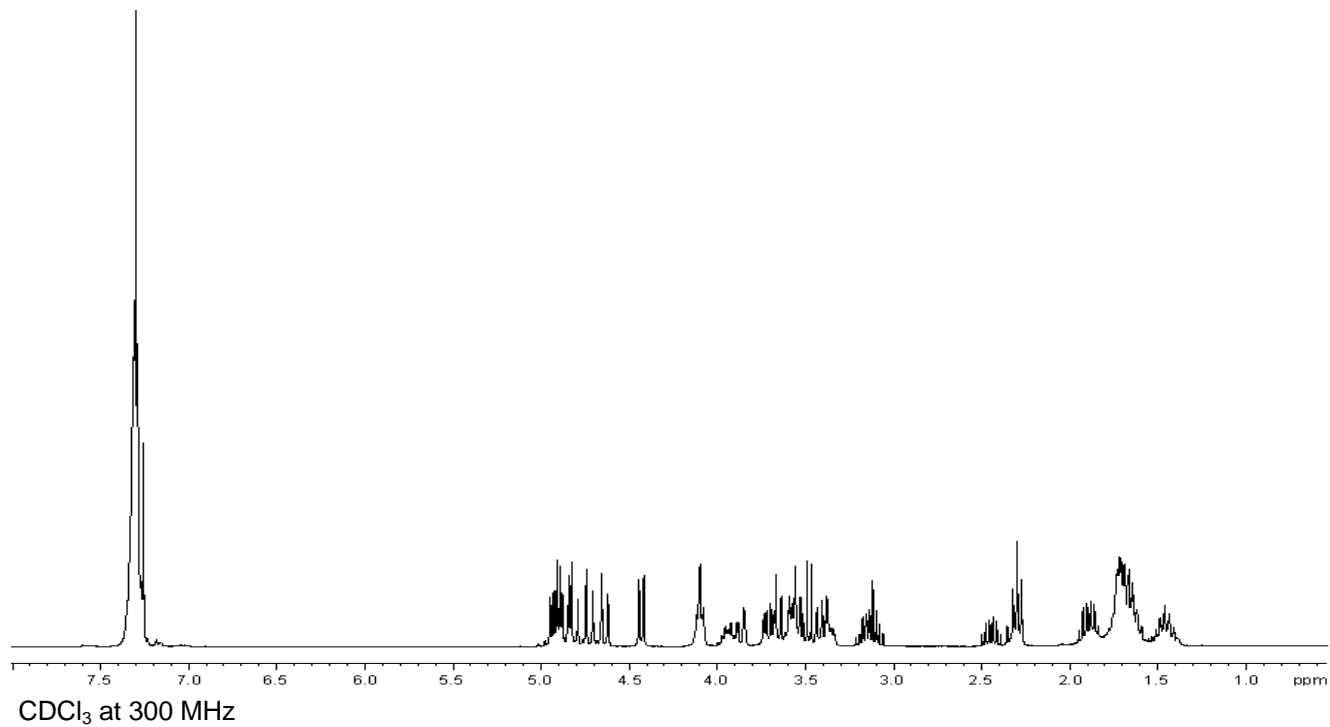
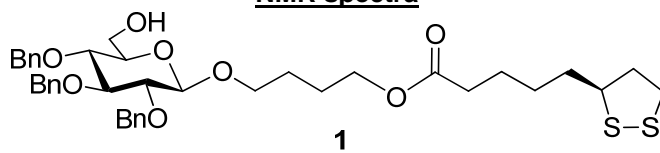
#### Contents

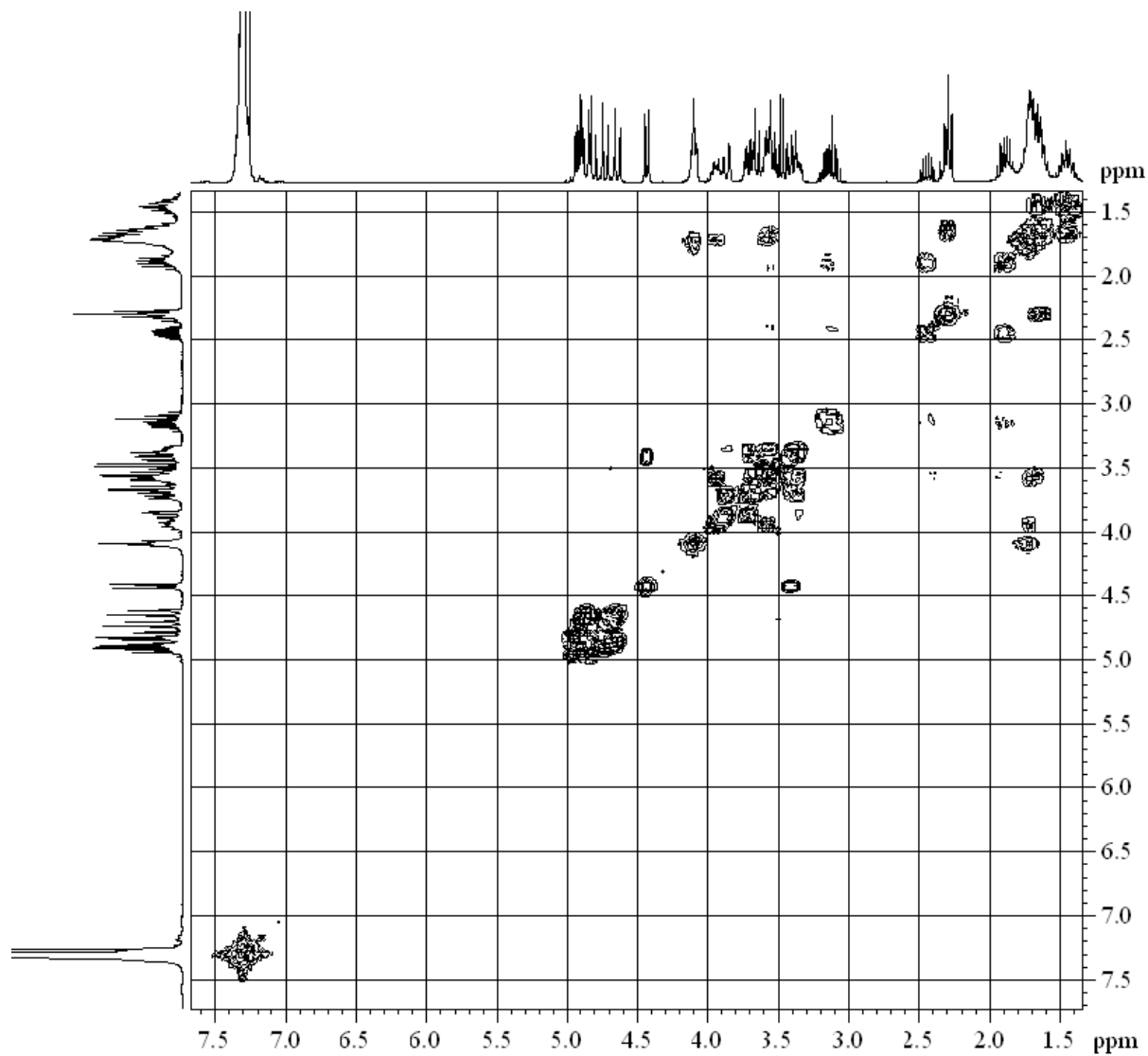
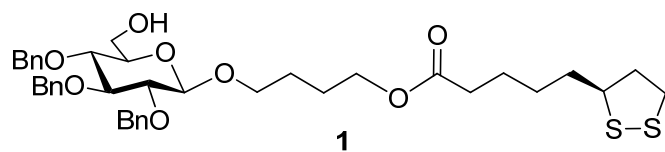
General remarks	S-1
NMR spectra	S-2

#### General remarks

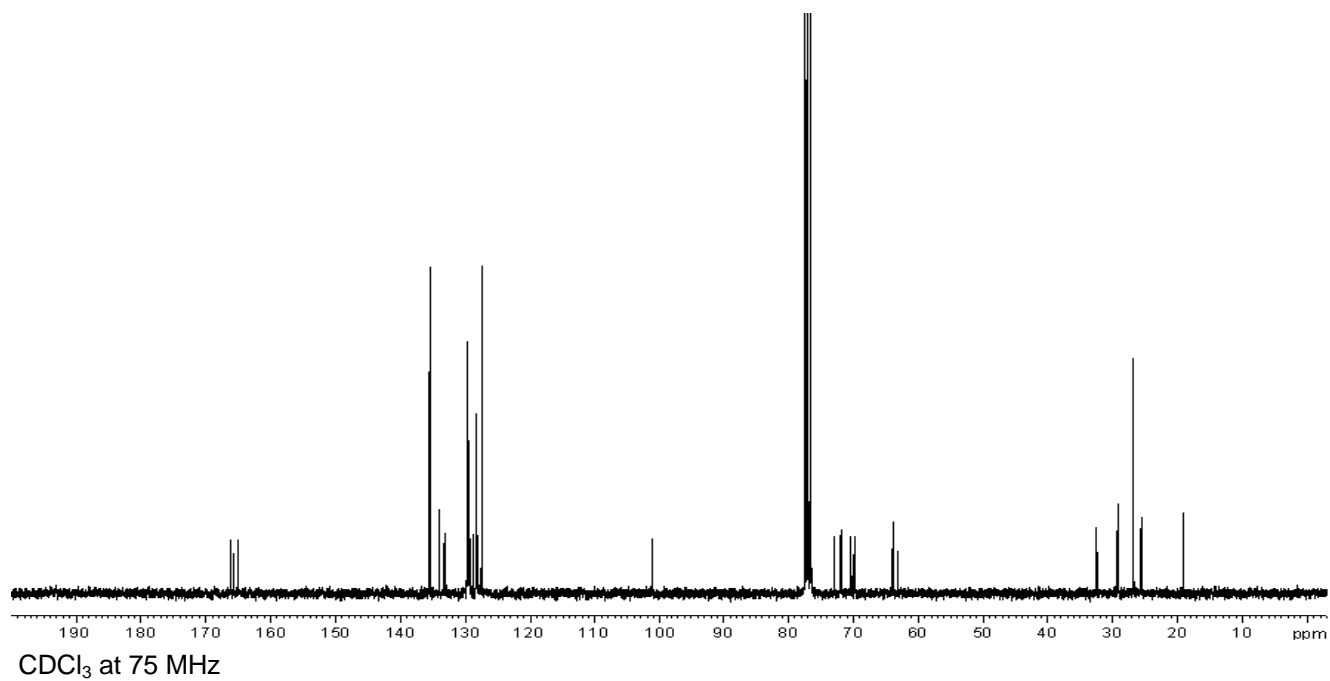
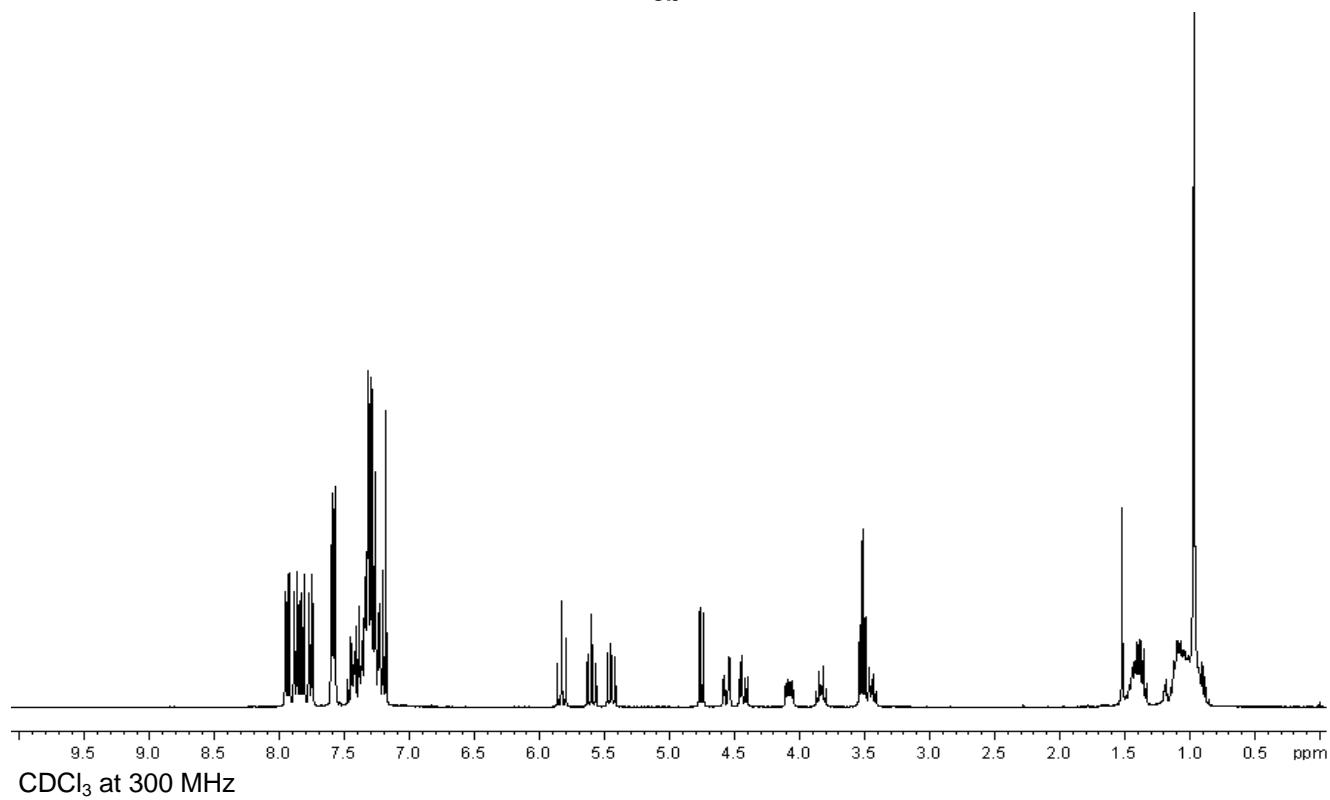
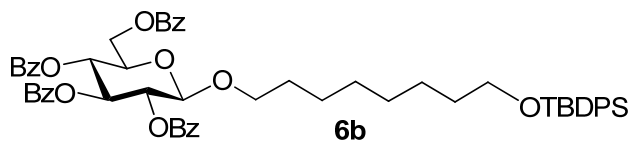
Column chromatography was performed on silica gel 60 (70-230 mesh), reactions were monitored by TLC on Kieselgel 60 F<sub>254</sub>. The compounds were detected by examination under UV light and by charring with 10% sulfuric acid in methanol. Solvents were removed under reduced pressure at < 40 °C. CH<sub>2</sub>Cl<sub>2</sub> and ClCH<sub>2</sub>CH<sub>2</sub>Cl were distilled from CaH<sub>2</sub> directly prior to application. Anhydrous DMF was used as is. Methanol was dried by refluxing with magnesium methoxide, distilled and stored under argon. Pyridine and acetonitrile were dried by refluxing with CaH<sub>2</sub> and then distilled and stored over molecular sieves (3 Å). Molecular sieves (3 Å or 4 Å), used for reactions, were crushed and activated *in vacuo* at 390 °C during 8 h in the first instance and then for 2-3 h at 390 °C directly prior to application. DOWEX MONOSPHERE 650C (H) was washed three times with MeOH and stored under MeOH. Racemic lipoic acid, also known as (±)-1,2-dithiolane-3-pentanoic acid, 6,8-dithiooctanoic acid, DL- $\alpha$ -lipoic acid, DL-6,8-thioctic acid, was used as is. <sup>1</sup>H-n.m.r. spectra were recorded in CDCl<sub>3</sub> at 300 MHz, <sup>13</sup>C-NMR spectra were recorded in CDCl<sub>3</sub> at 75 MHz unless otherwise noted. HRMS determinations were made with the use of a Mass Spectrometer with ion-trap detection.

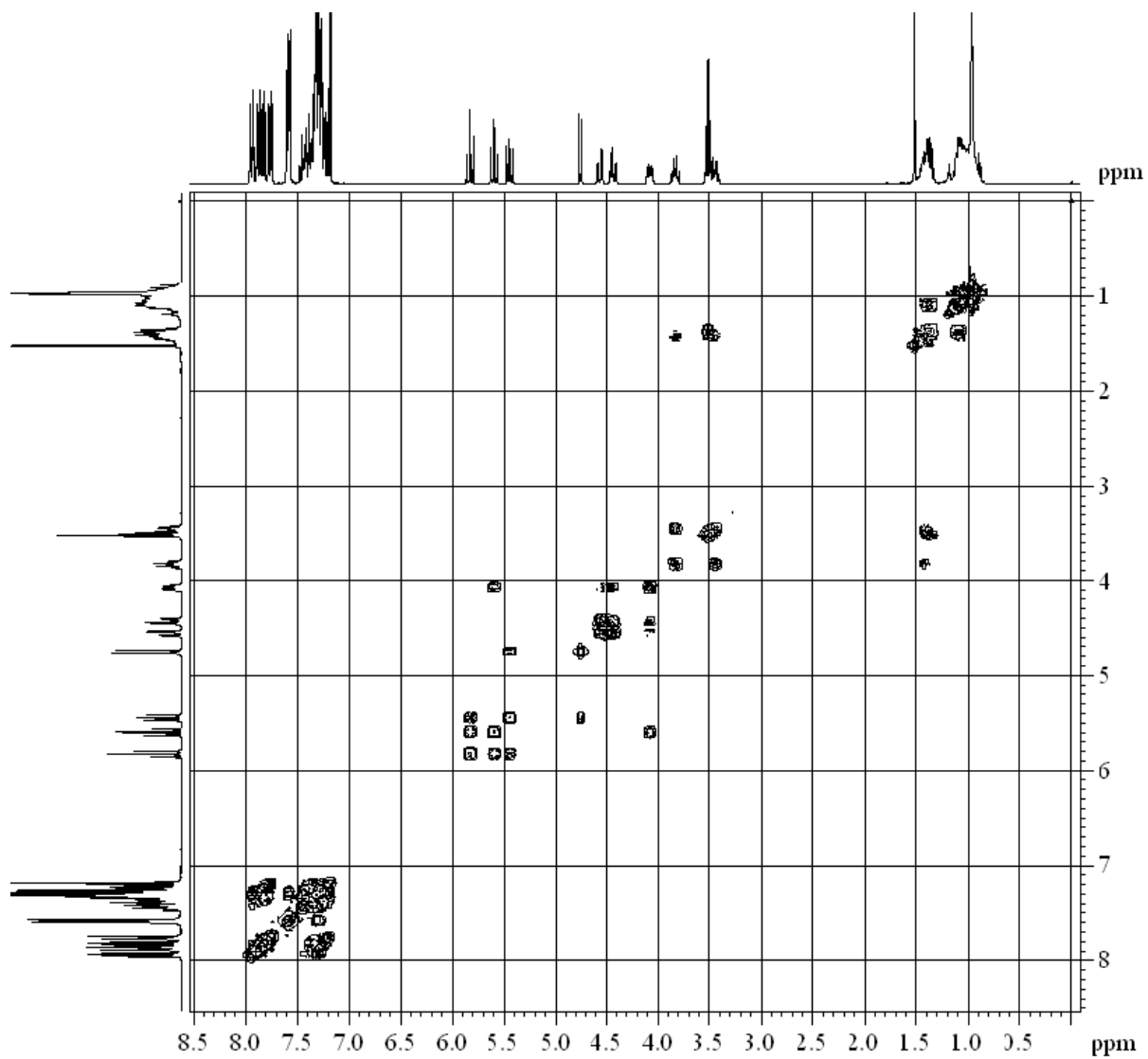
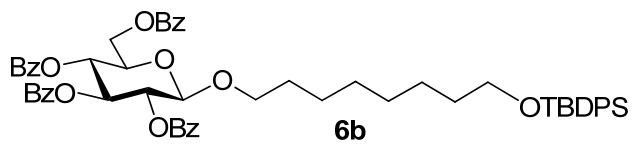
**NMR spectra**



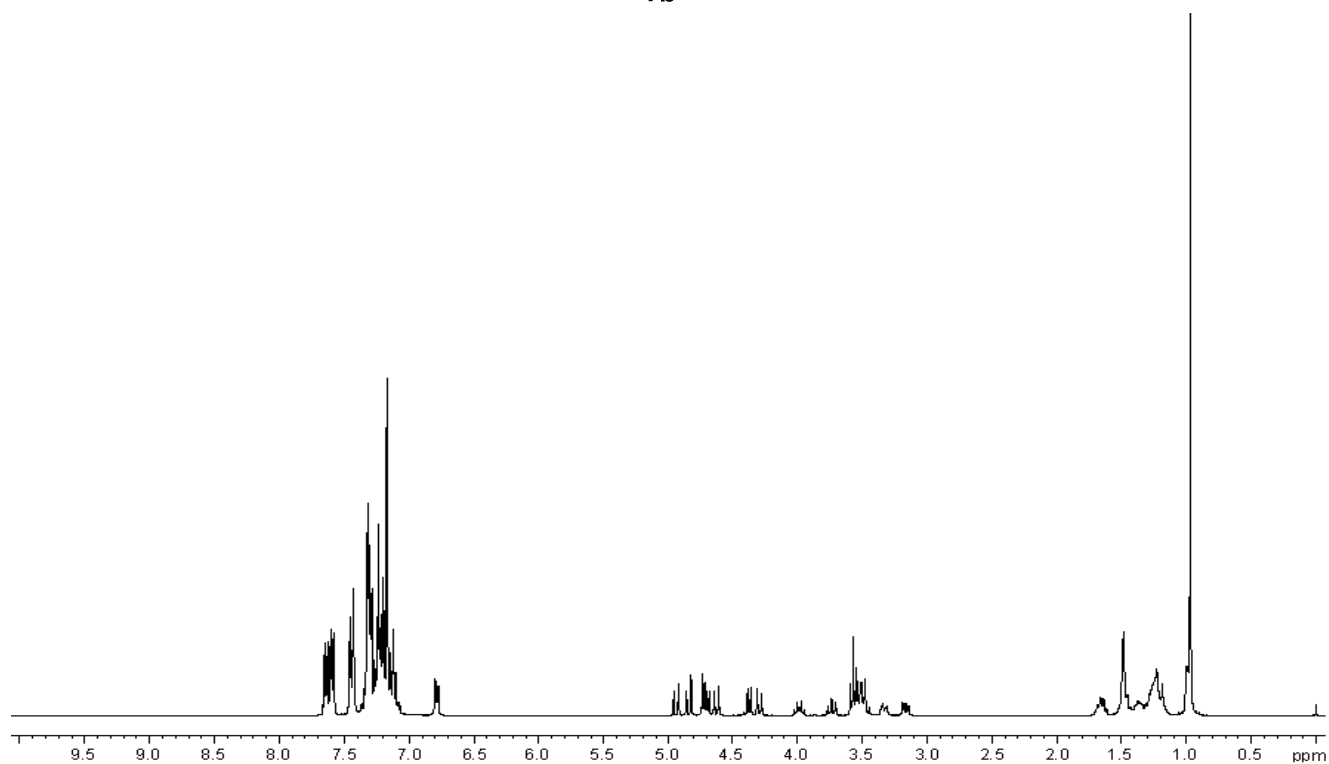
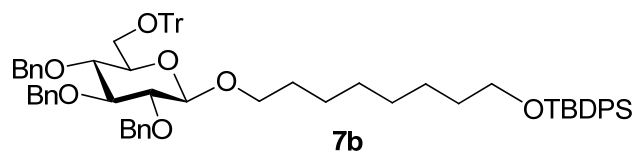


CDCl<sub>3</sub> at 300 MHz

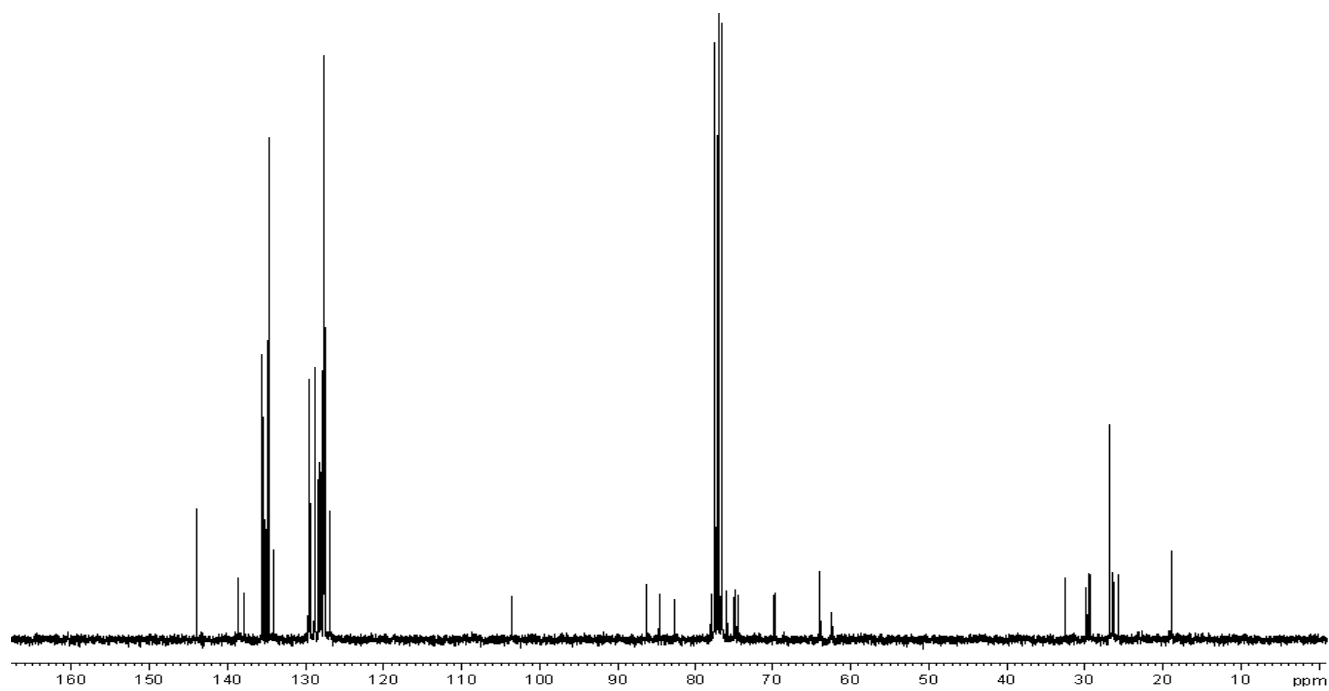




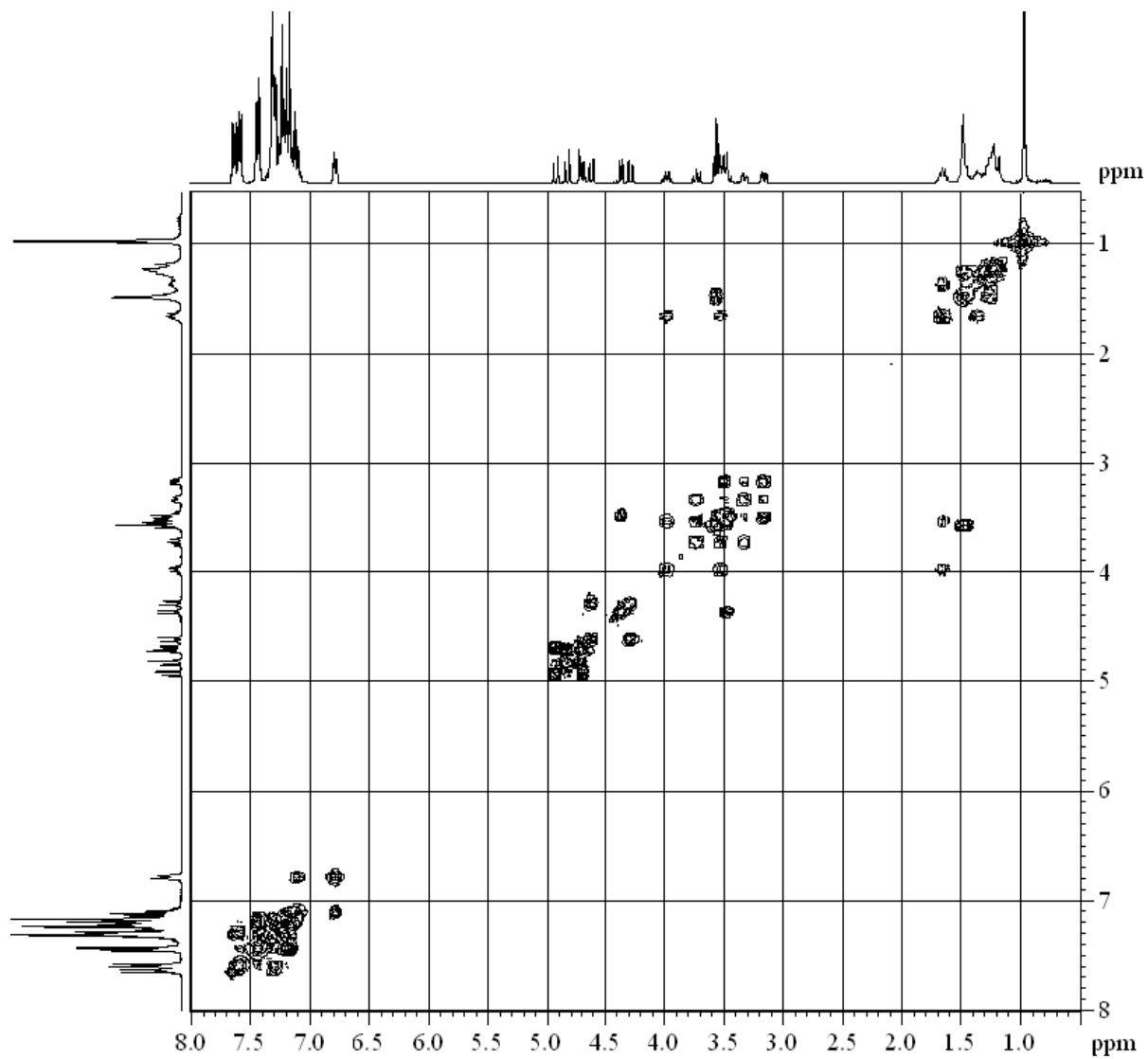
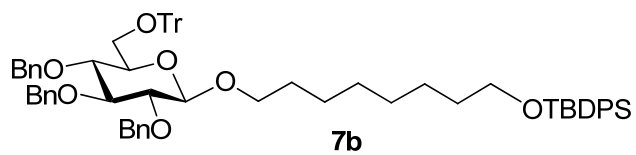
CDCl<sub>3</sub> at 300 MHz



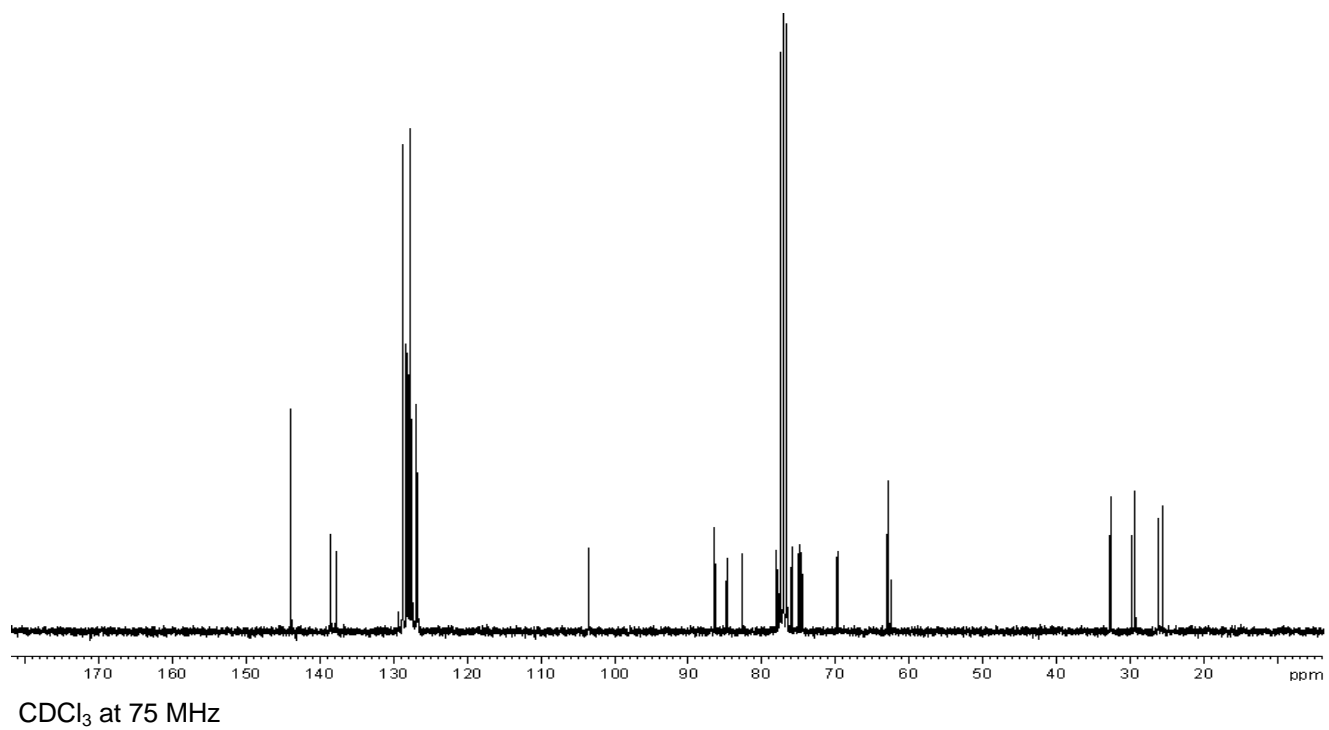
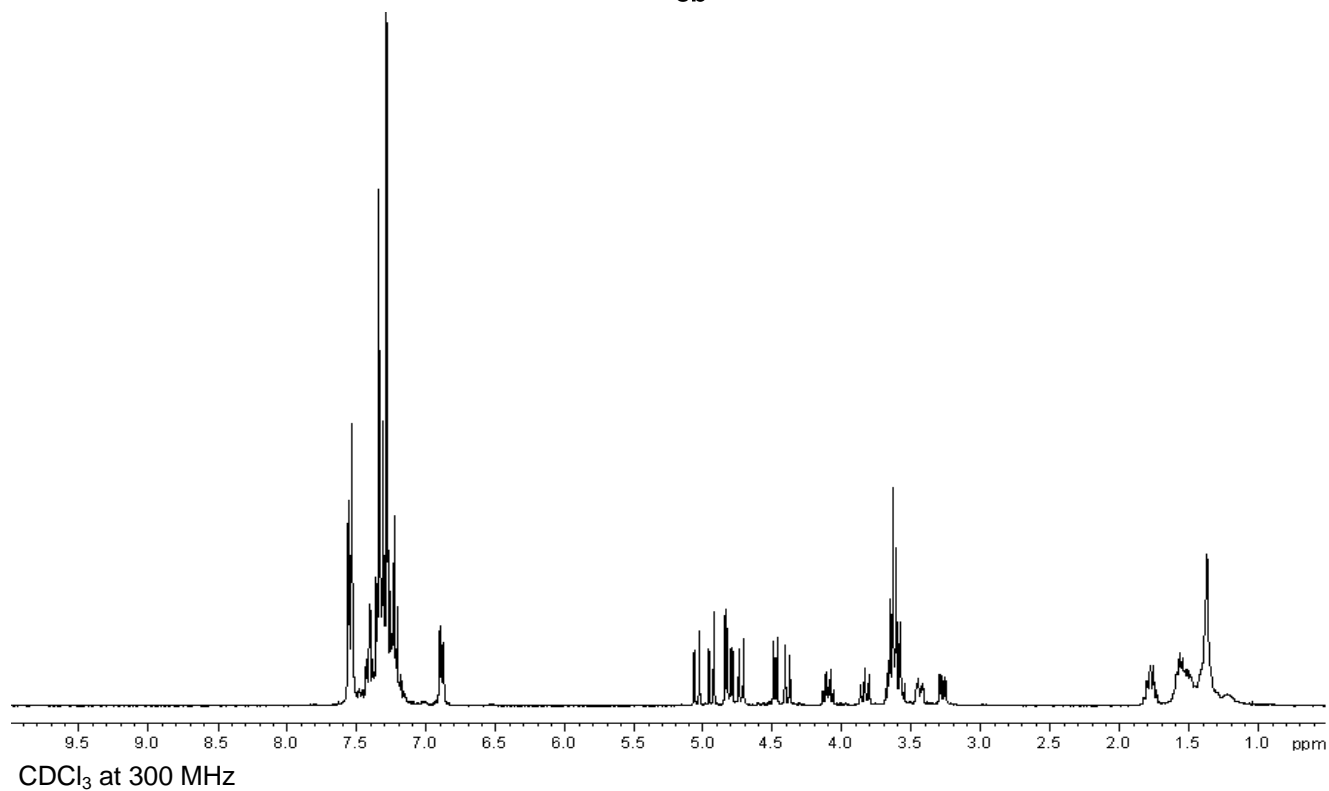
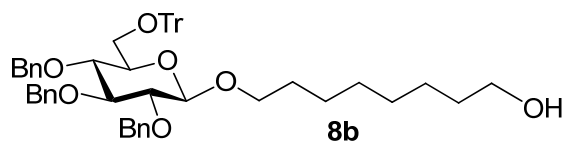
CDCl<sub>3</sub> at 300 MHz



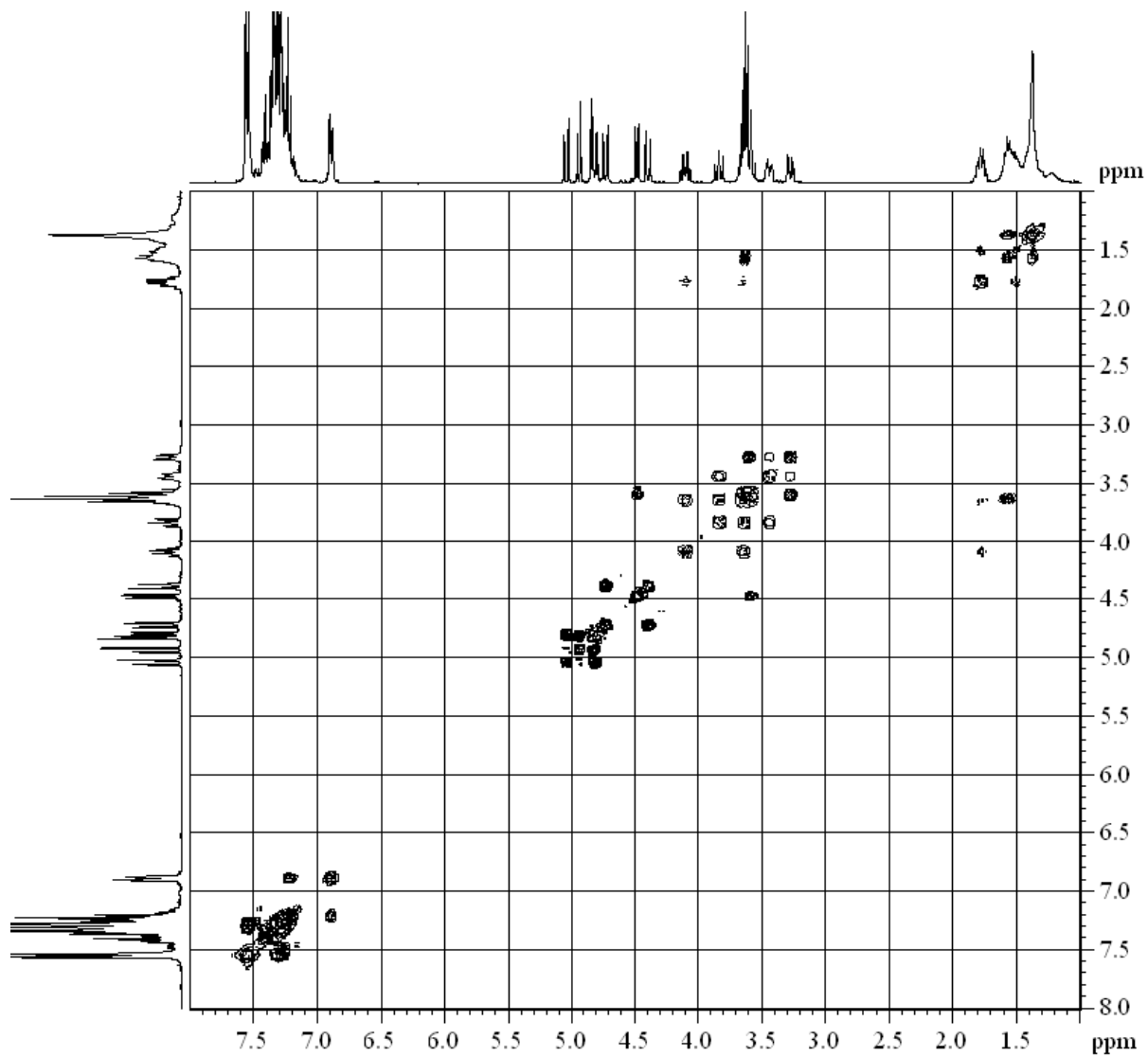
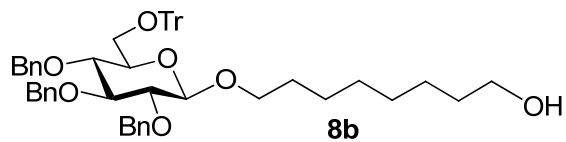
CDCl<sub>3</sub> at 75 MHz



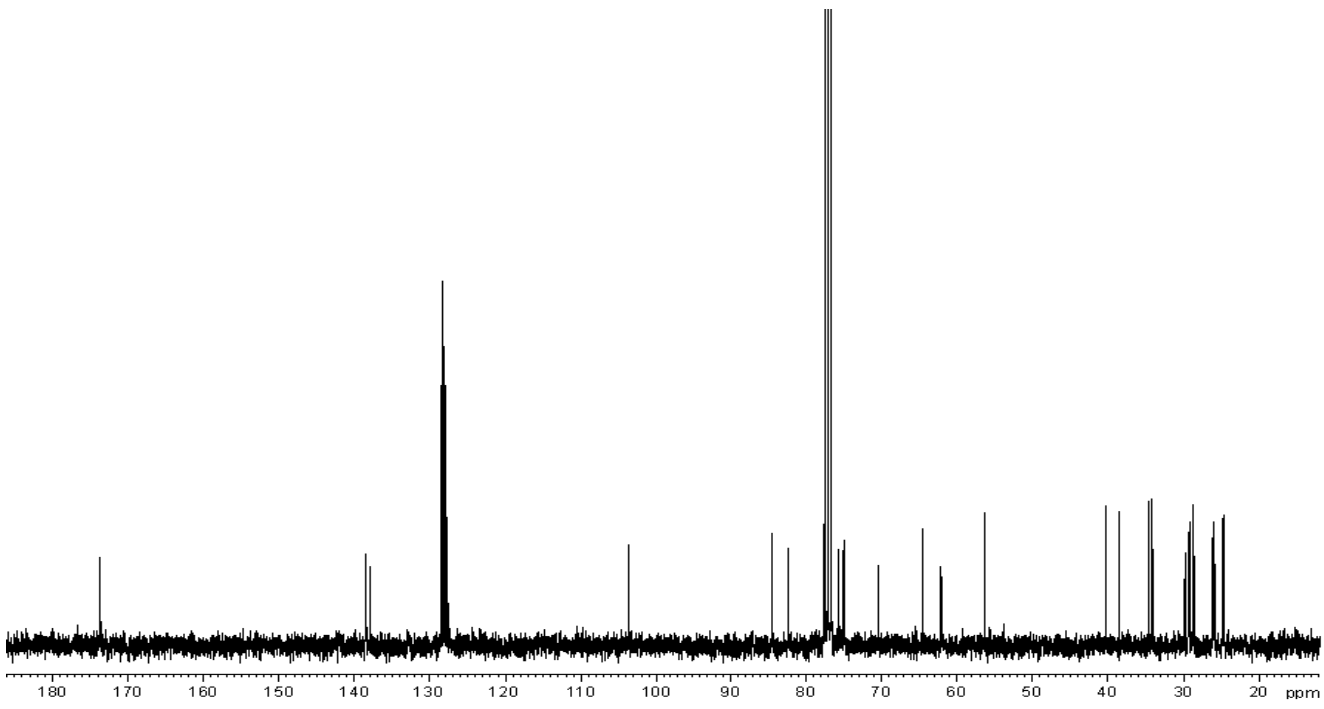
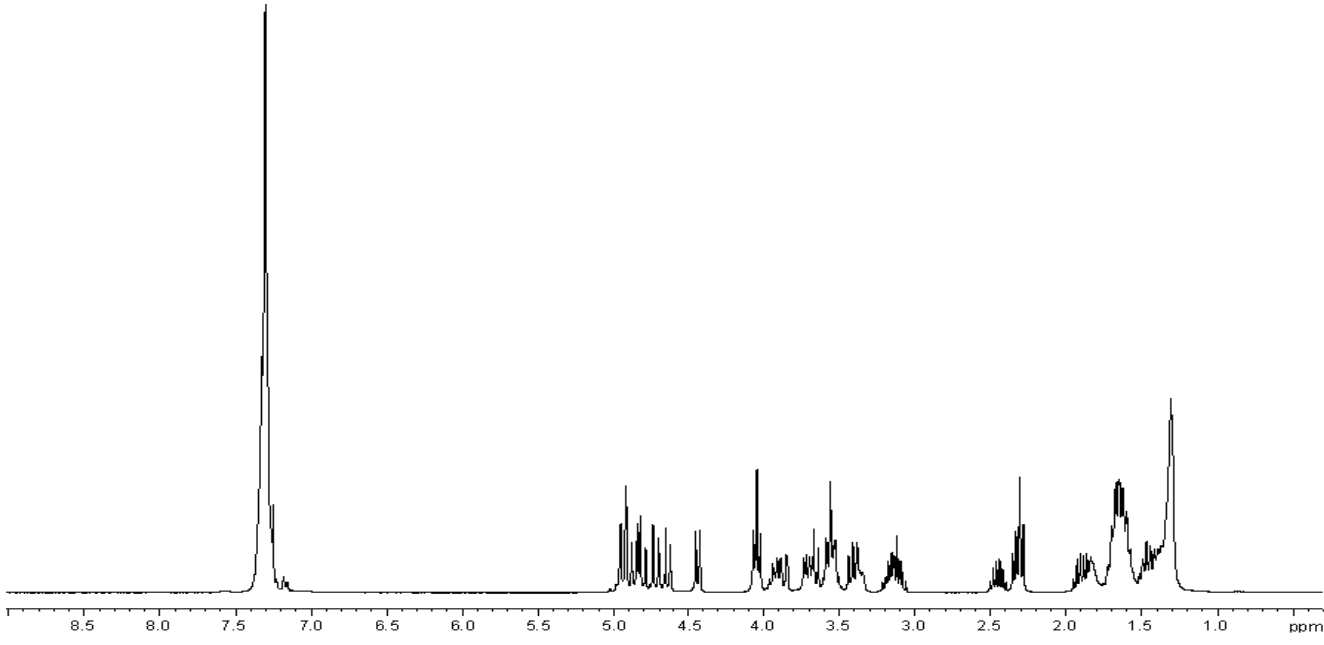
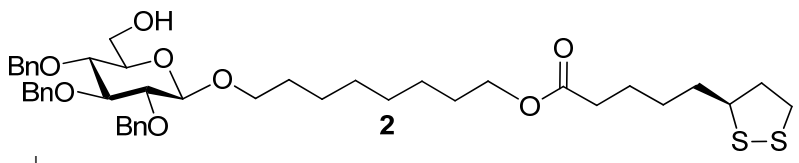
CDCl<sub>3</sub> at 300 MHz

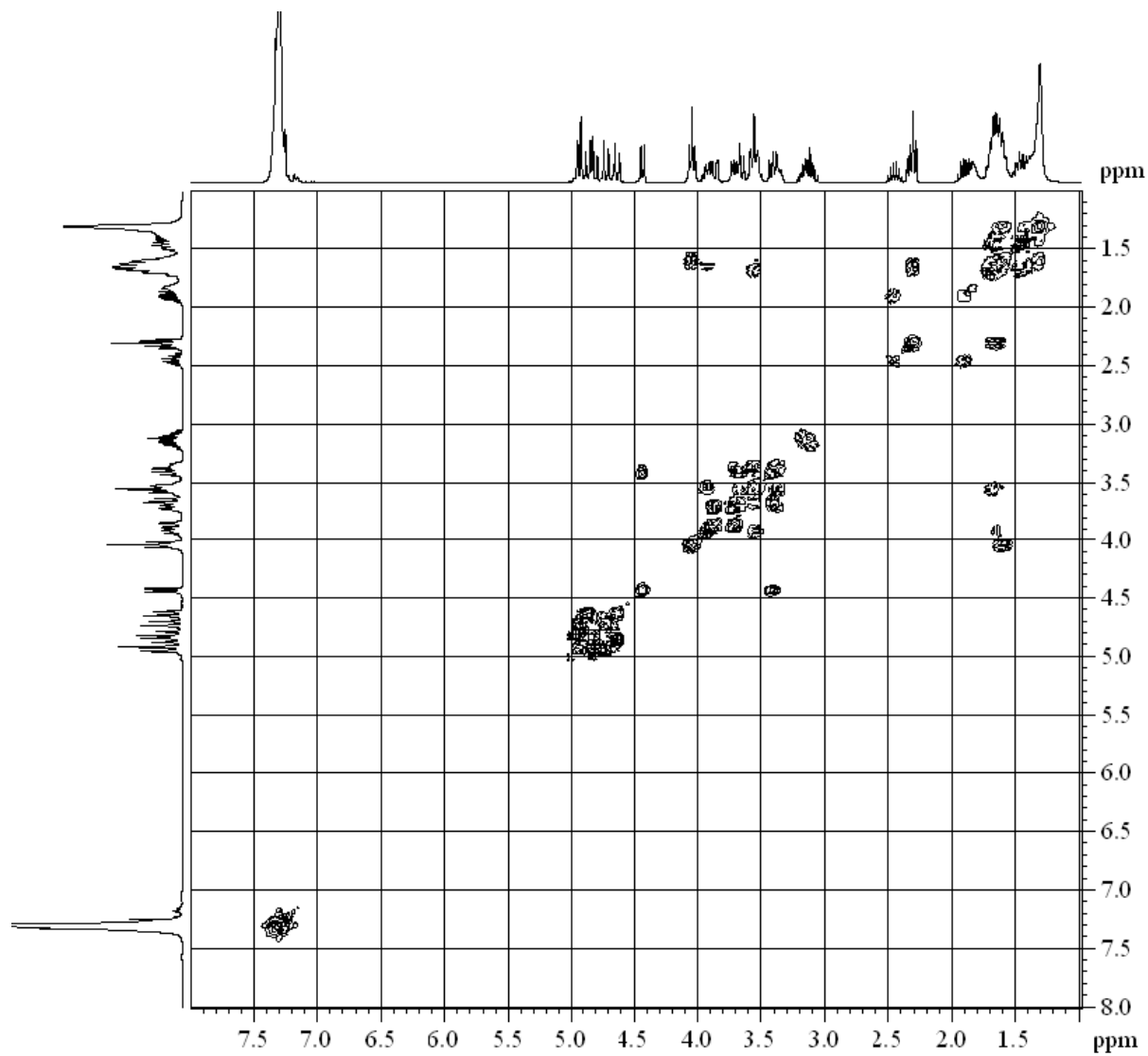
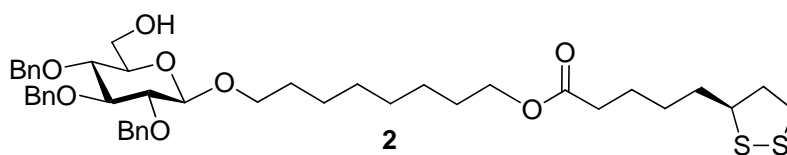




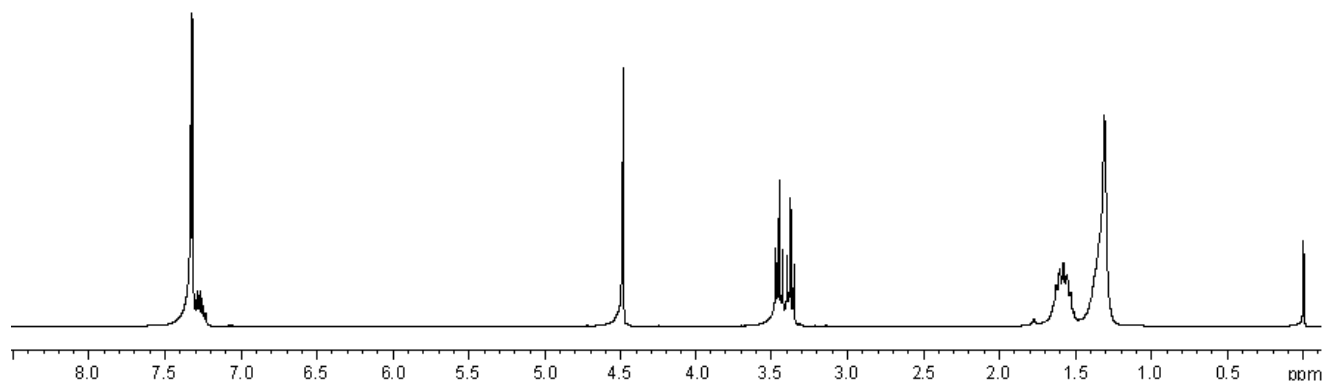
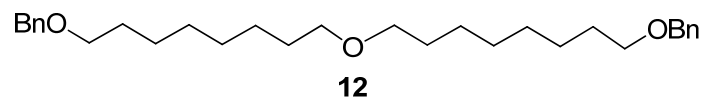


CDCl<sub>3</sub> at 300 MHz

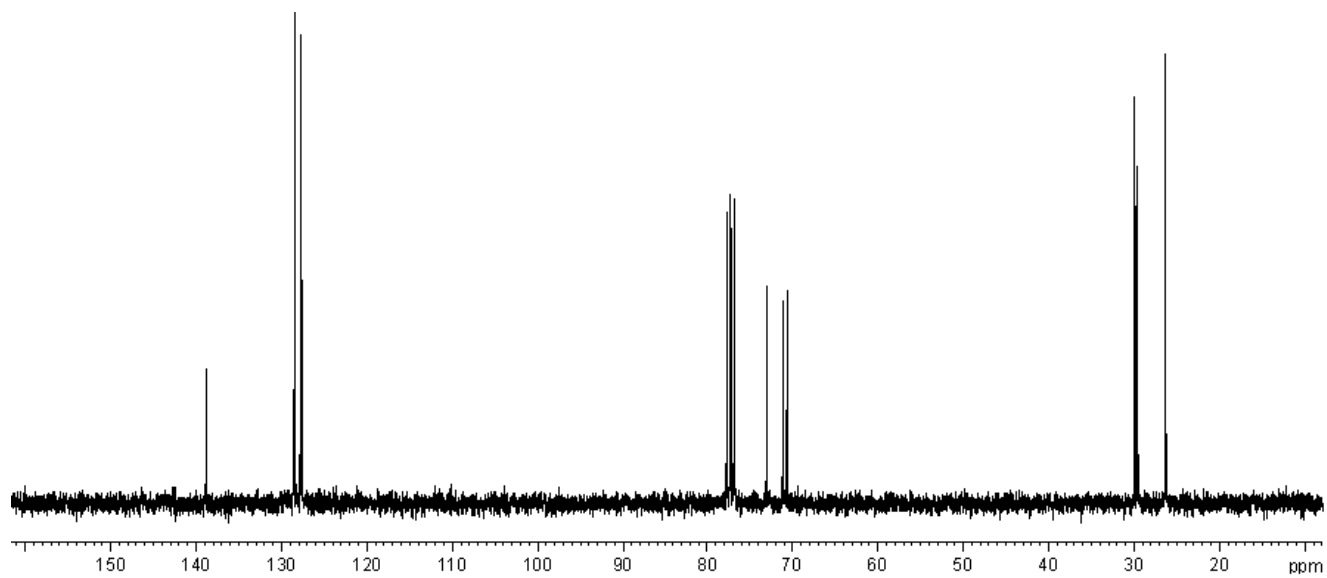




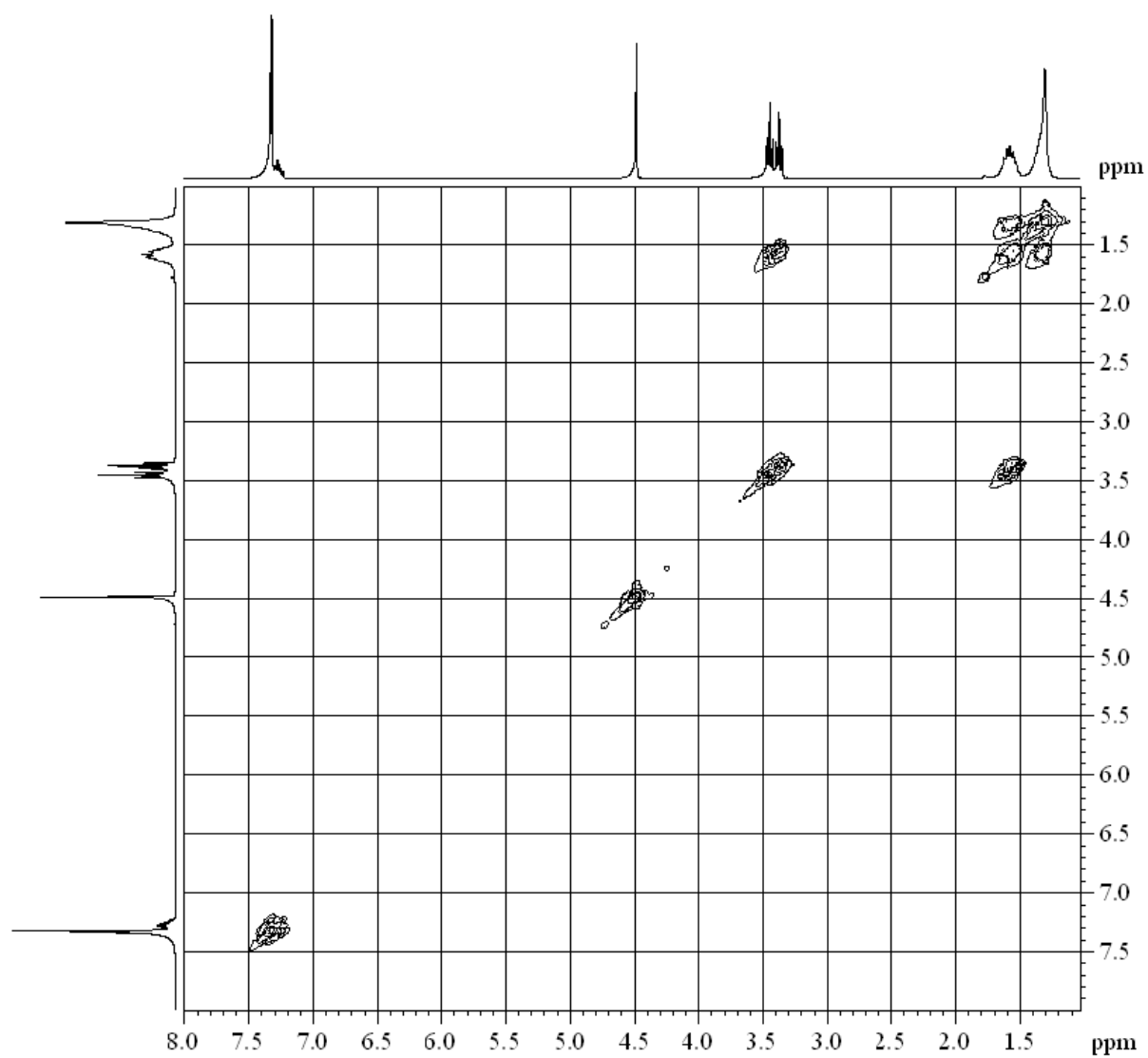
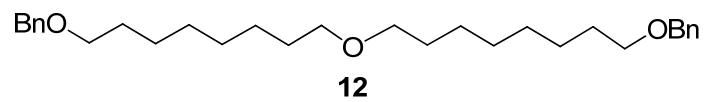
CDCl<sub>3</sub> at 300 MHz



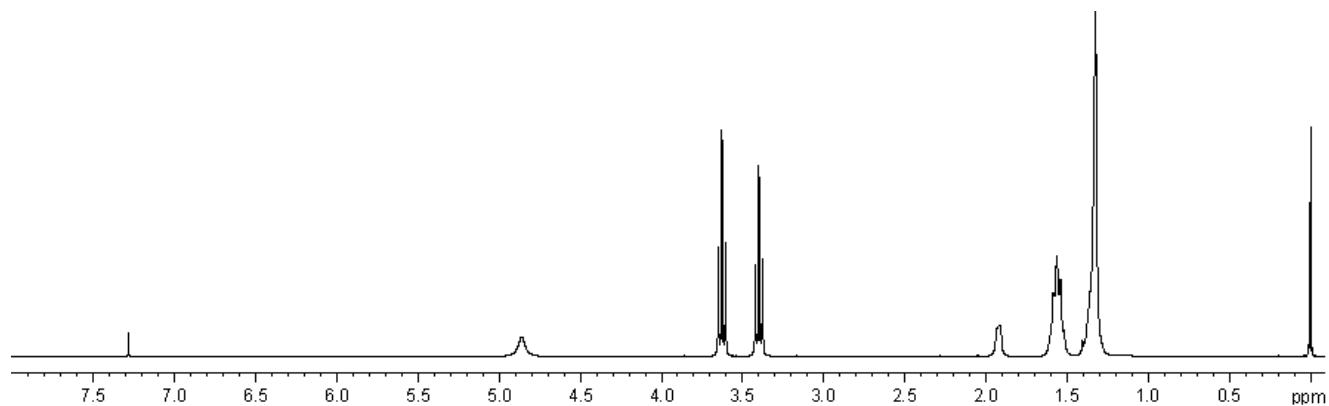
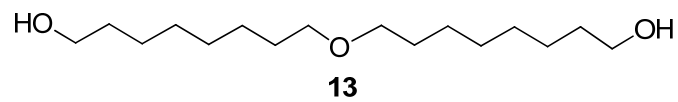
CDCl<sub>3</sub> at 300 MHz



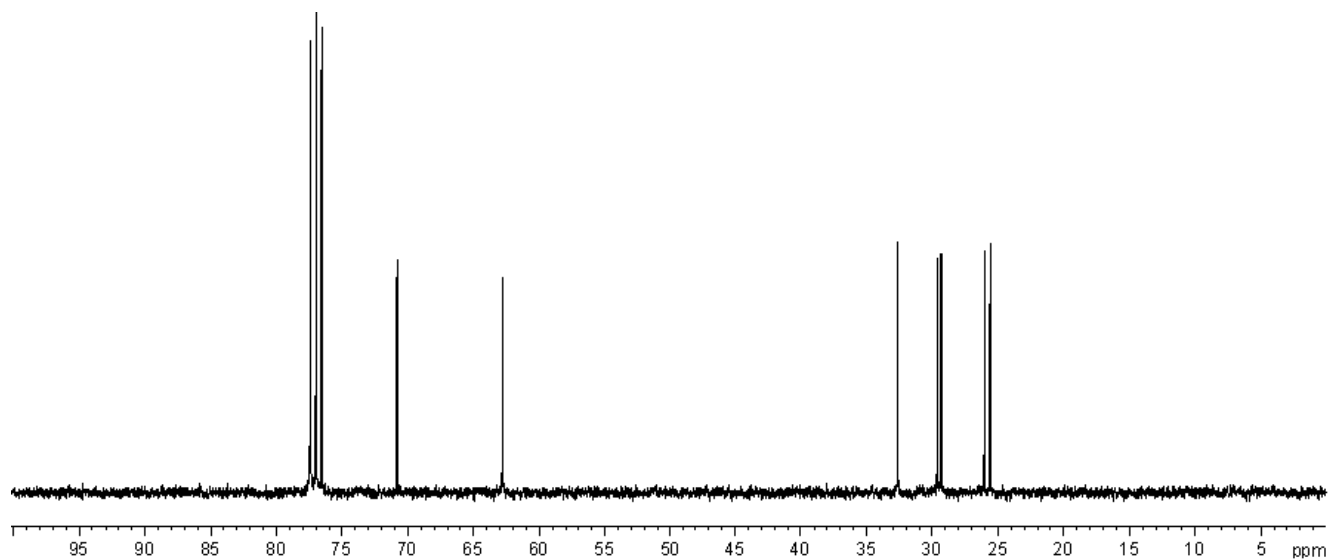
CDCl<sub>3</sub> at 75 MHz



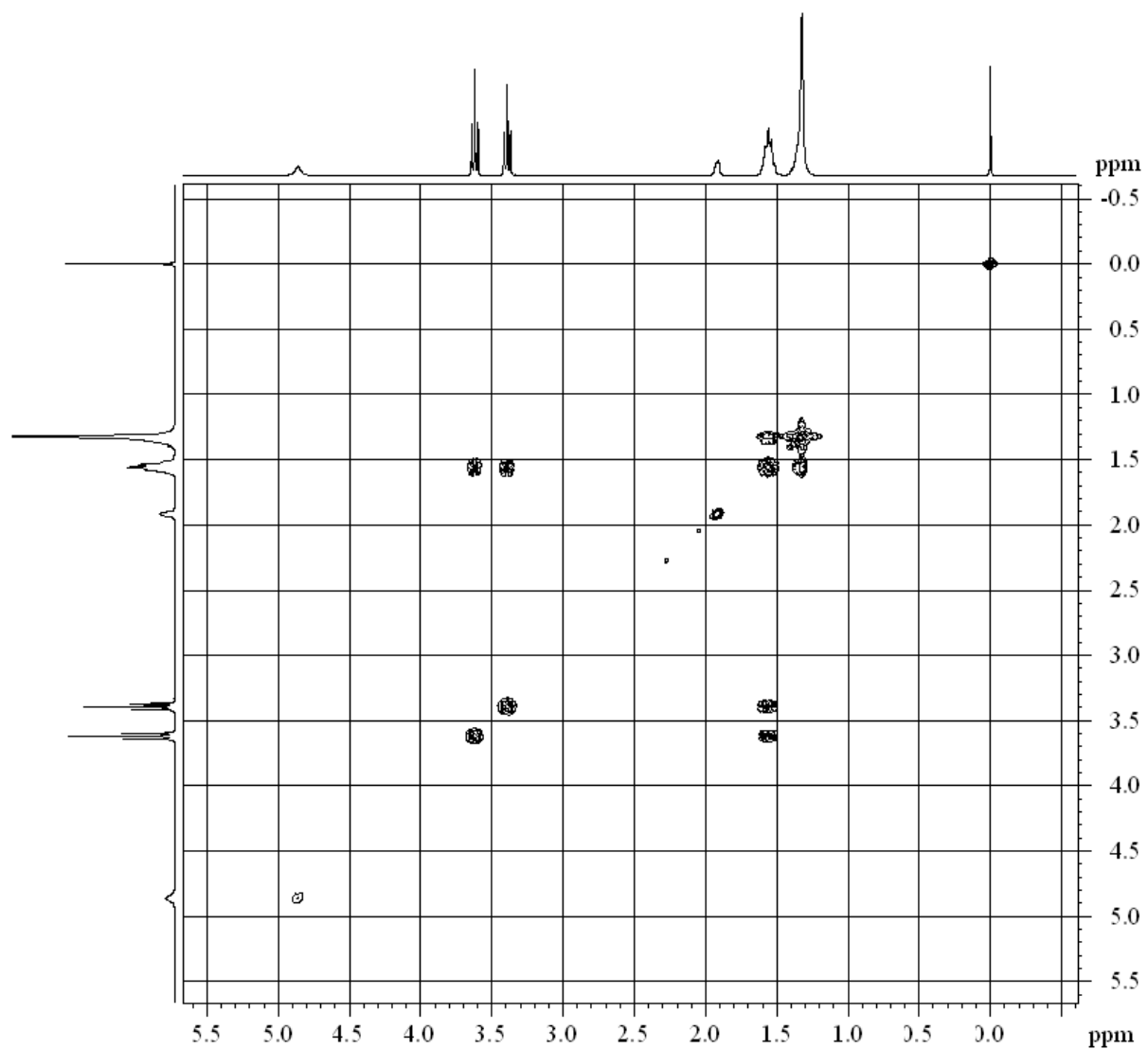
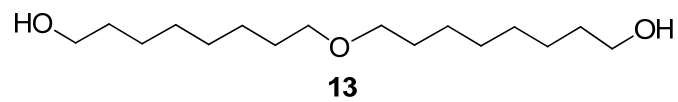
CDCl<sub>3</sub> at 300 MHz



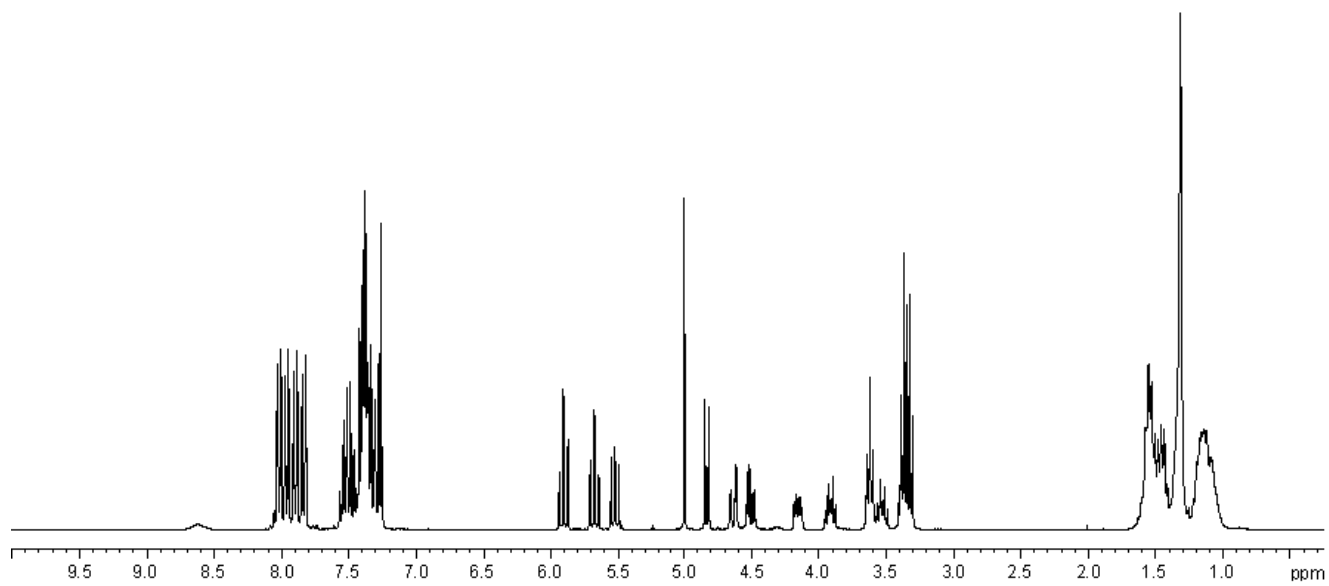
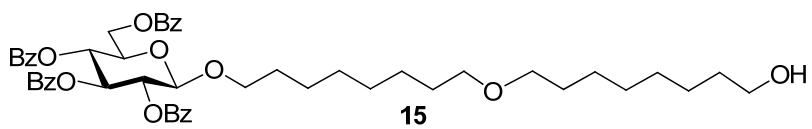
CDCl<sub>3</sub> at 300 MHz



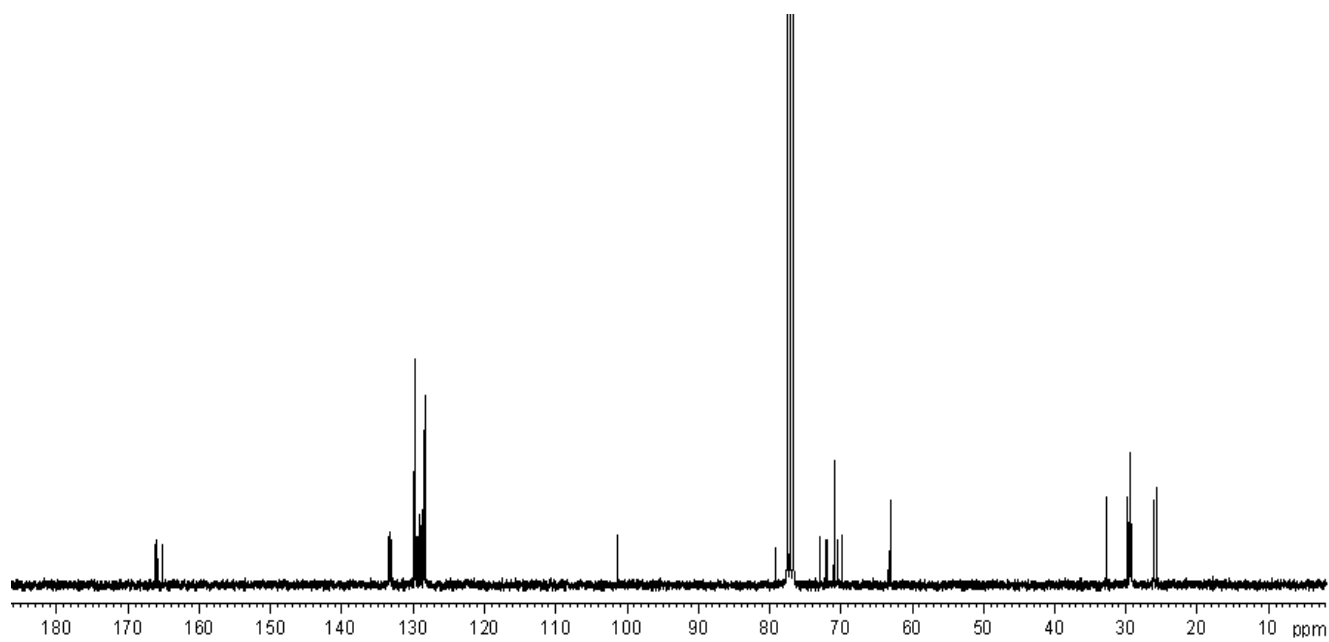
CDCl<sub>3</sub> at 75 MHz



CDCl<sub>3</sub> at 300 MHz

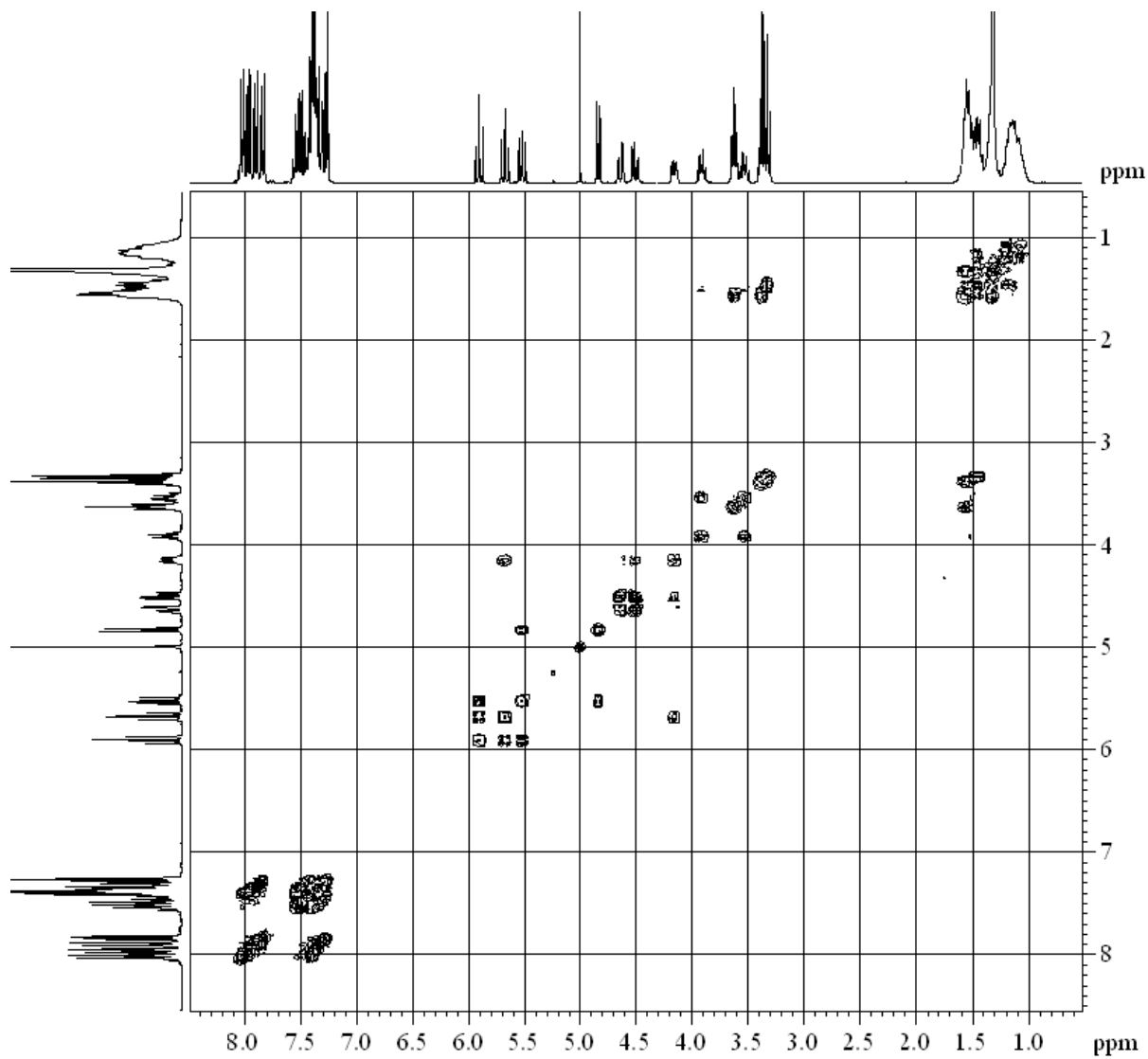
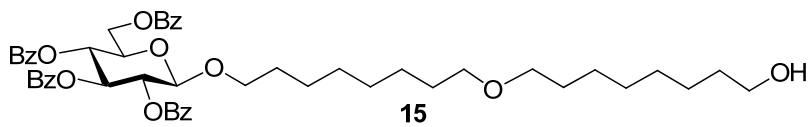


CDCl<sub>3</sub> at 300 MHz

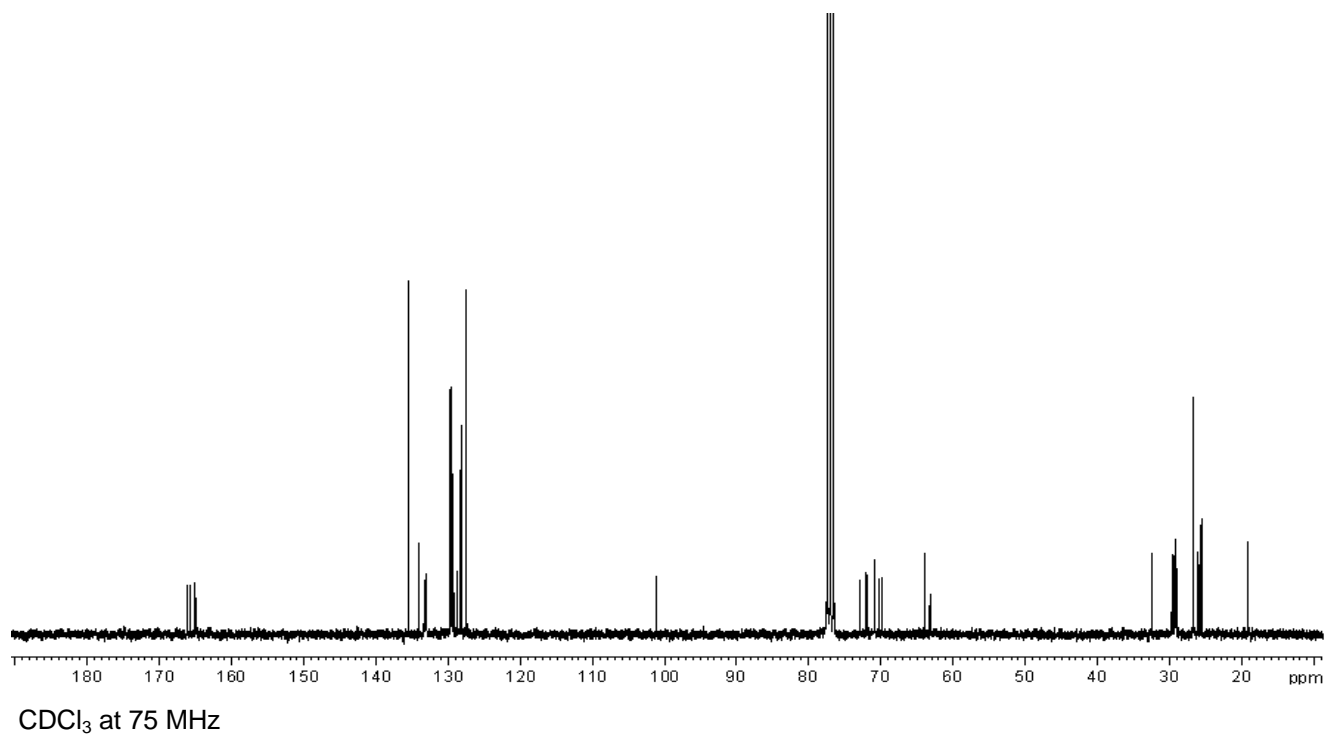
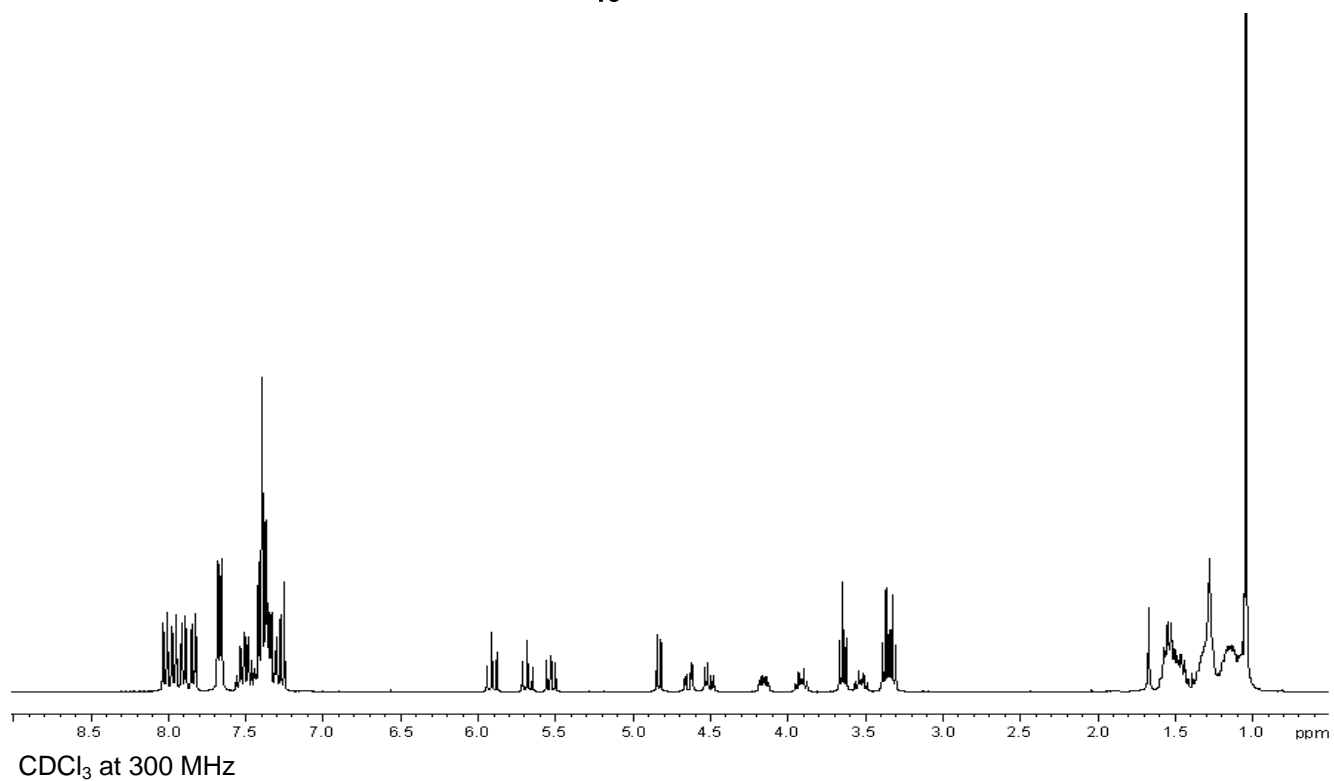
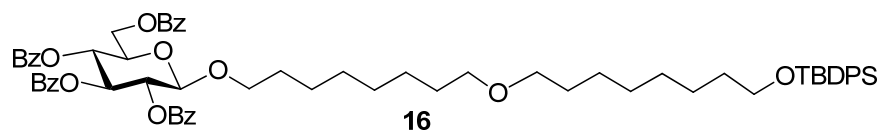


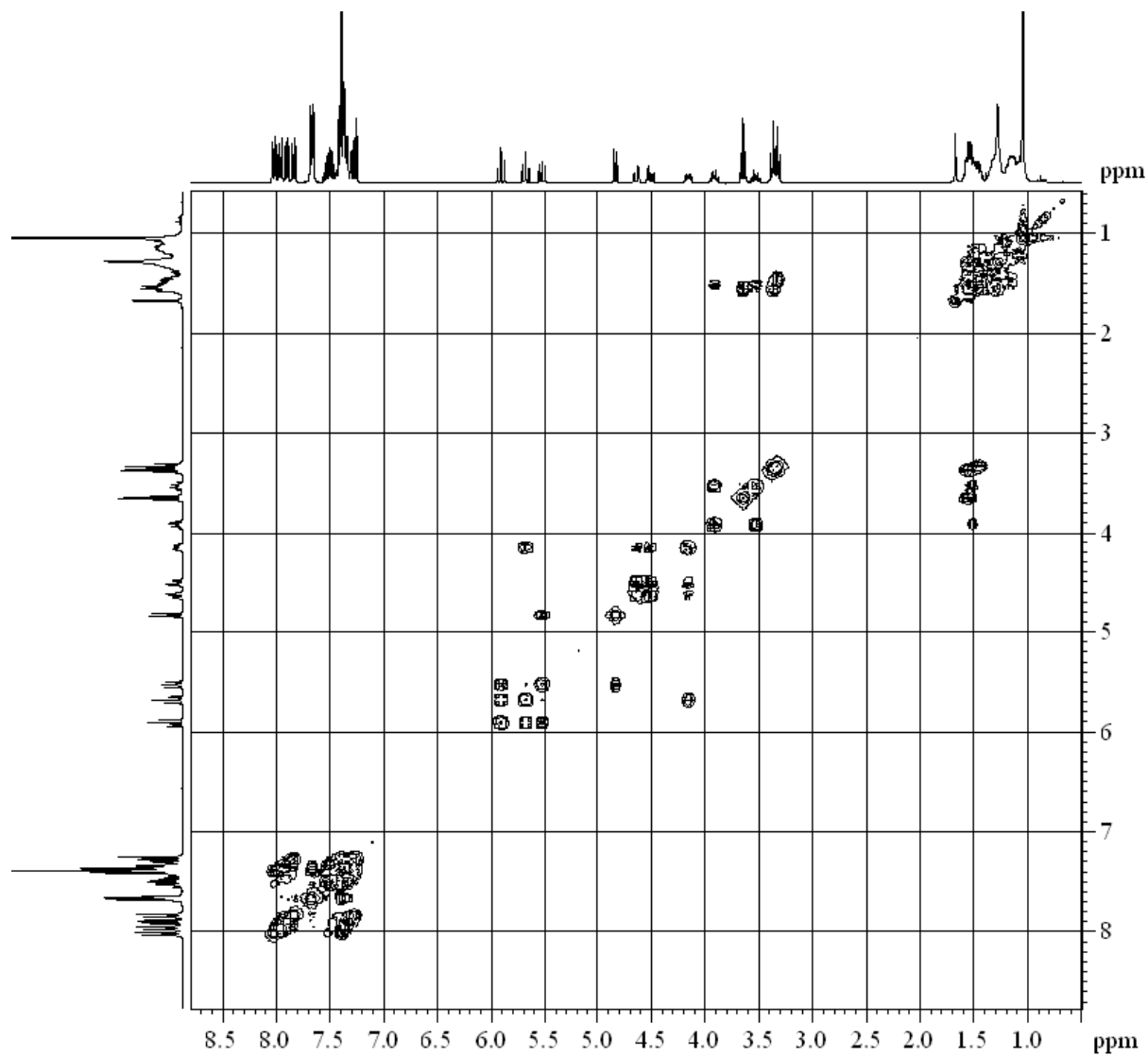
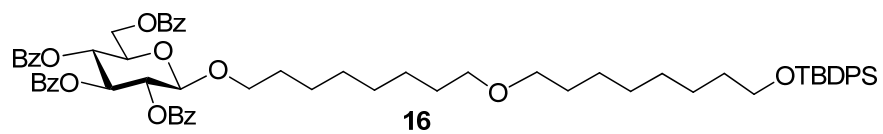
CDCl<sub>3</sub> at 75 MHz





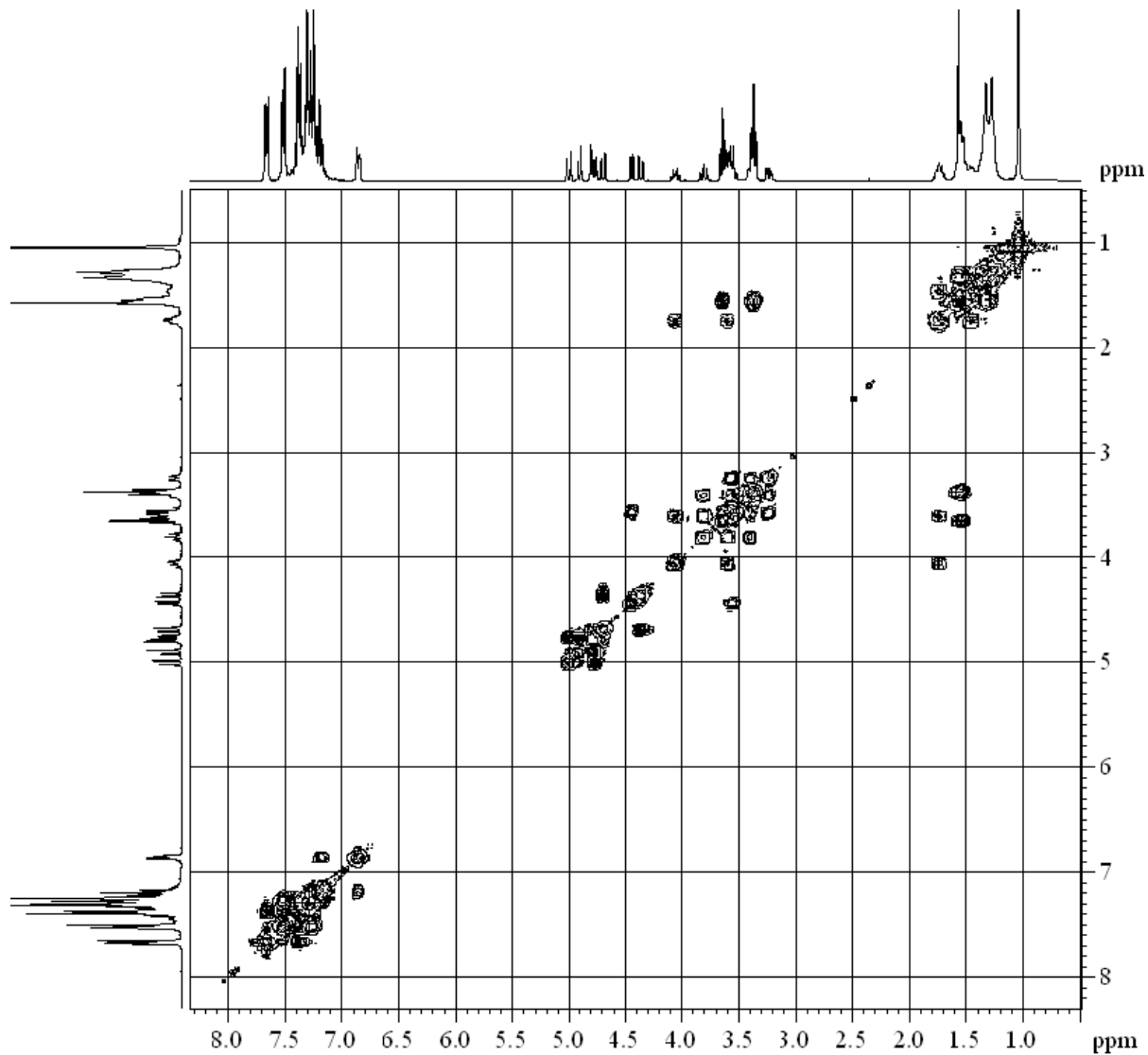
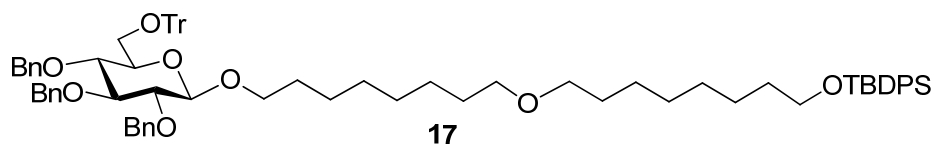
CDCl<sub>3</sub> at 300 MHz



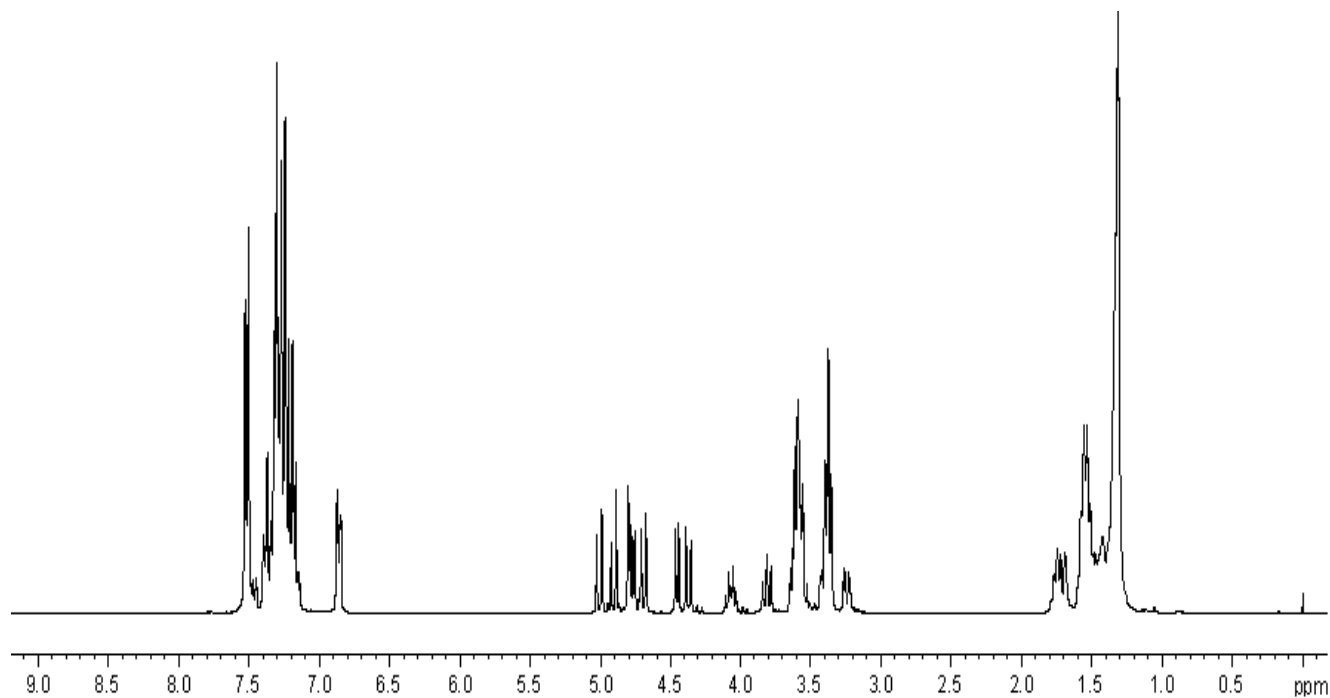
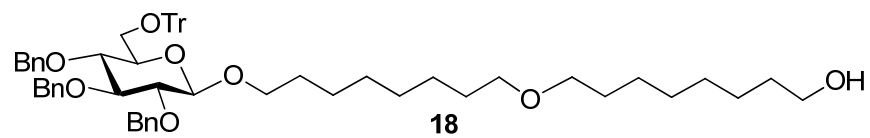


CDCl<sub>3</sub> at 300 MHz

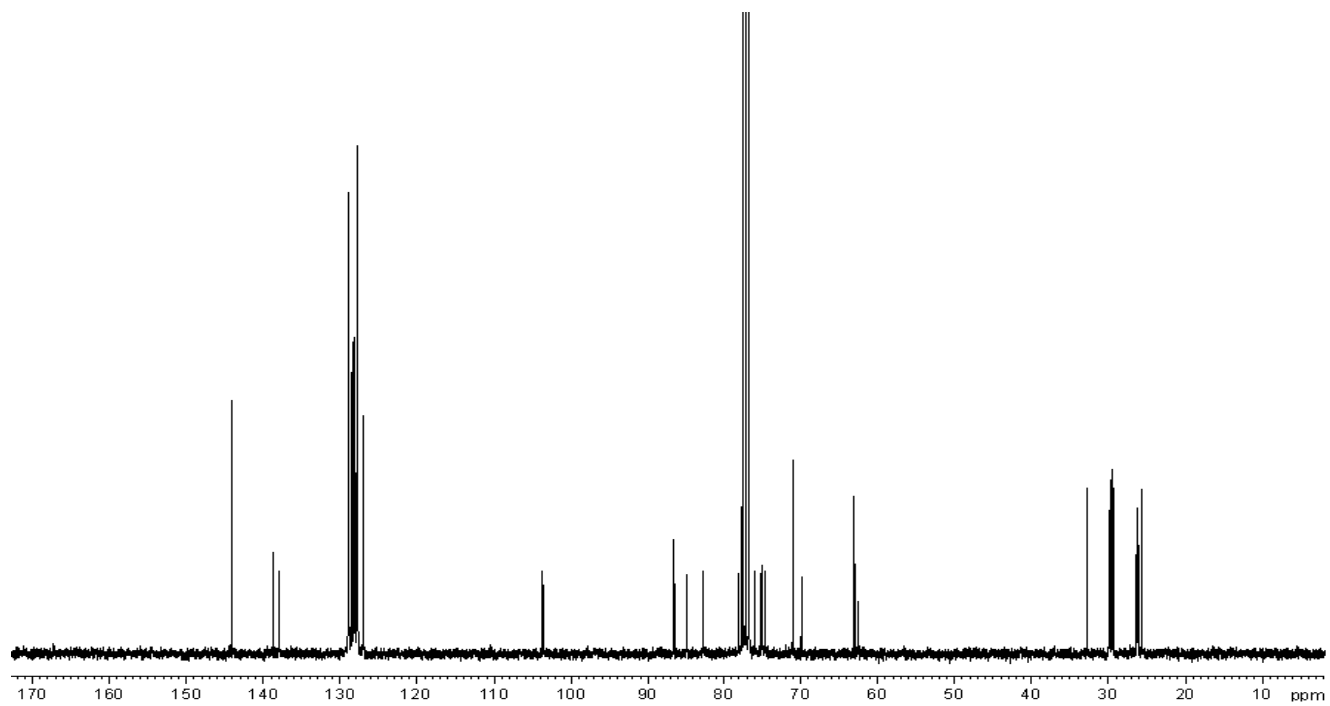




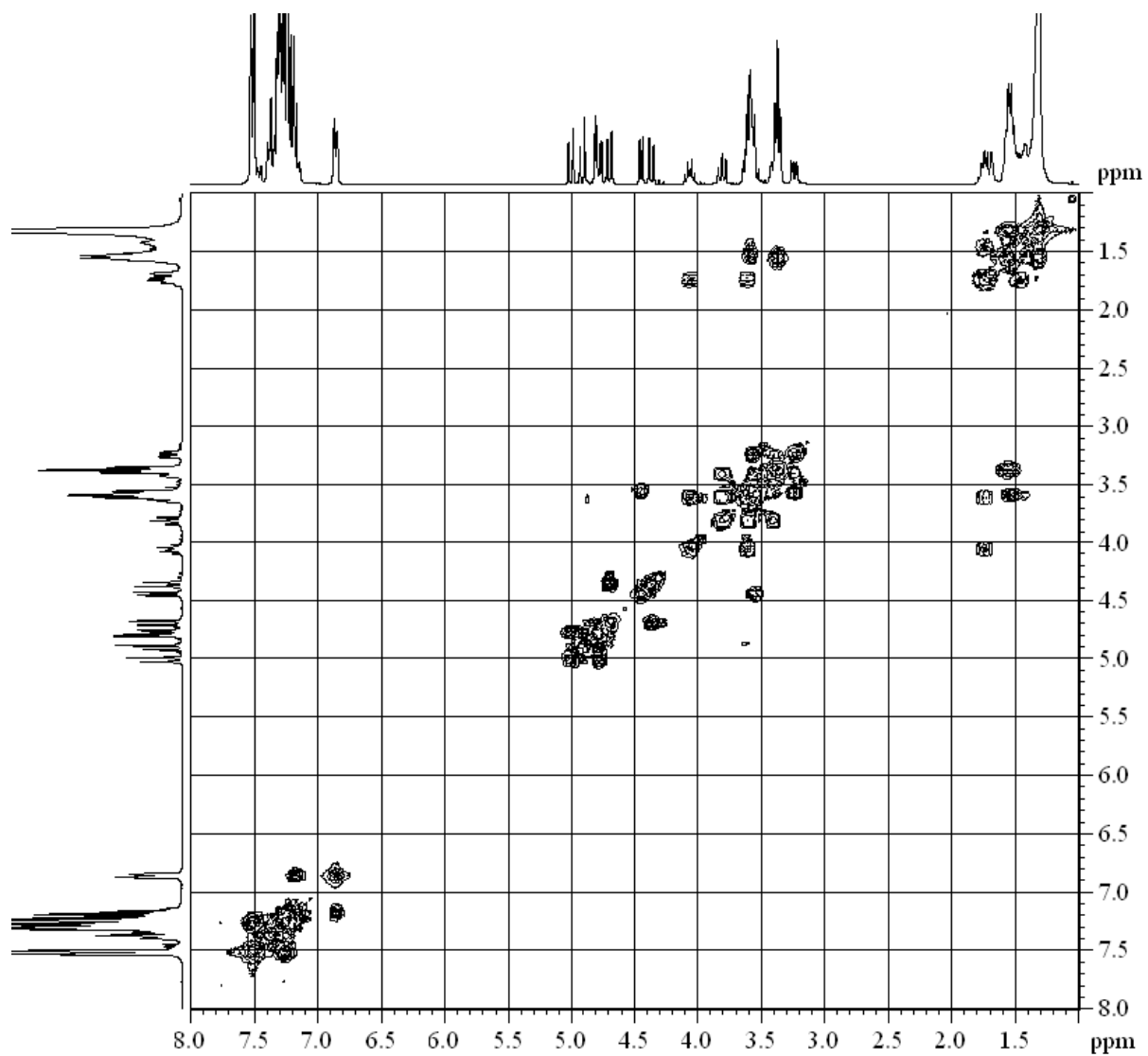
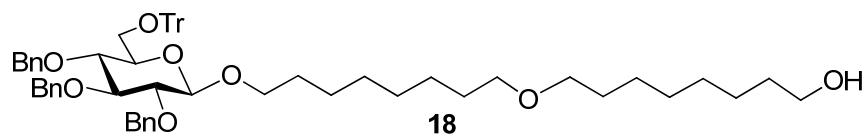
CDCl<sub>3</sub> at 300 MHz



CDCl<sub>3</sub> at 300 MHz



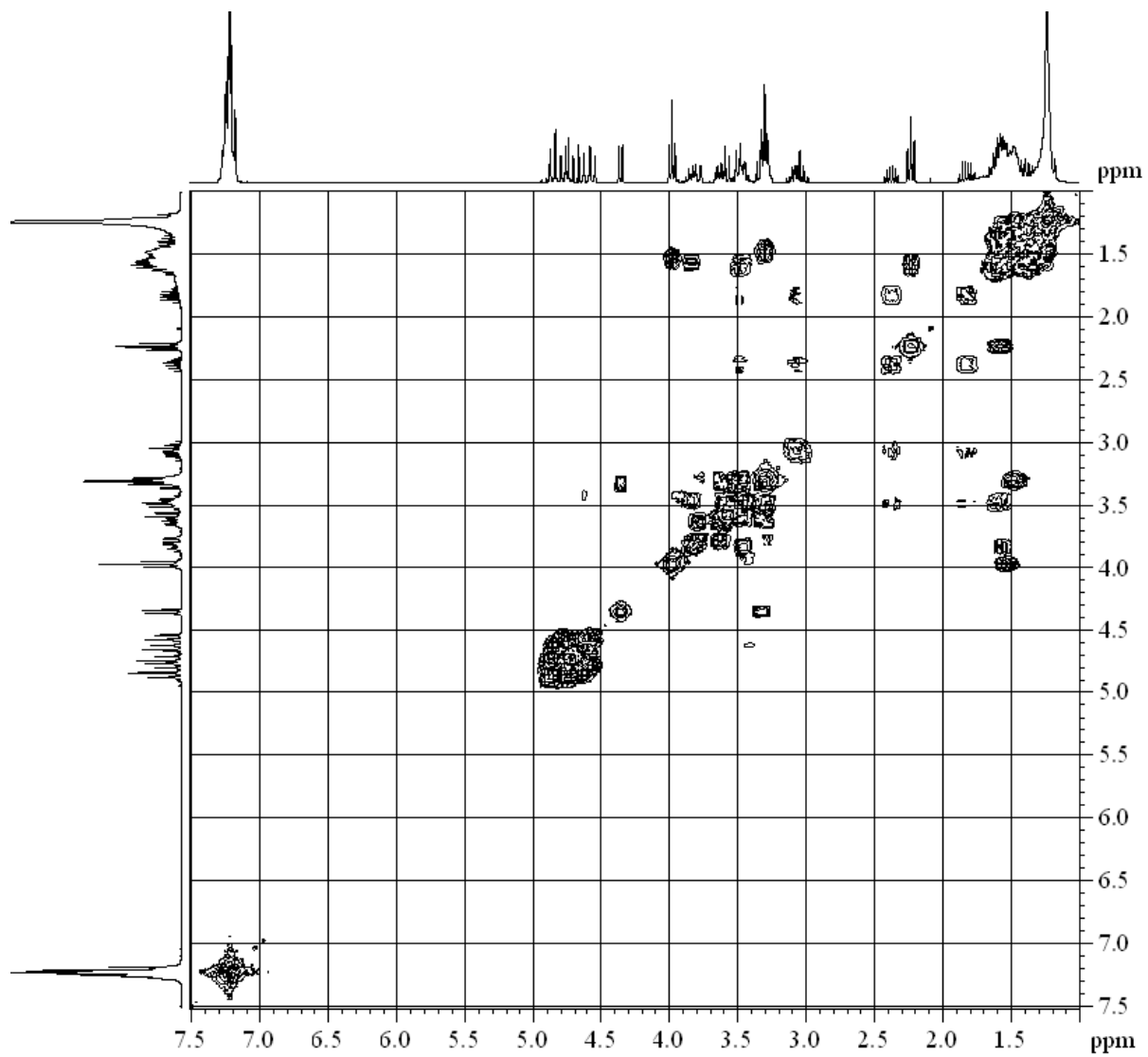
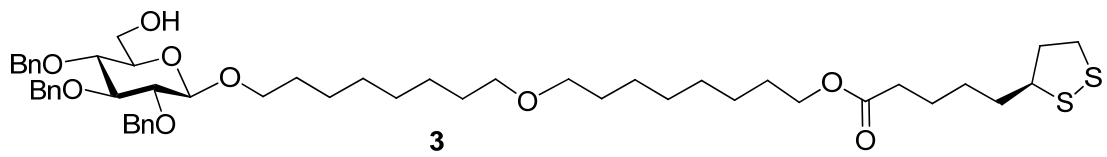
CDCl<sub>3</sub> at 75 MHz



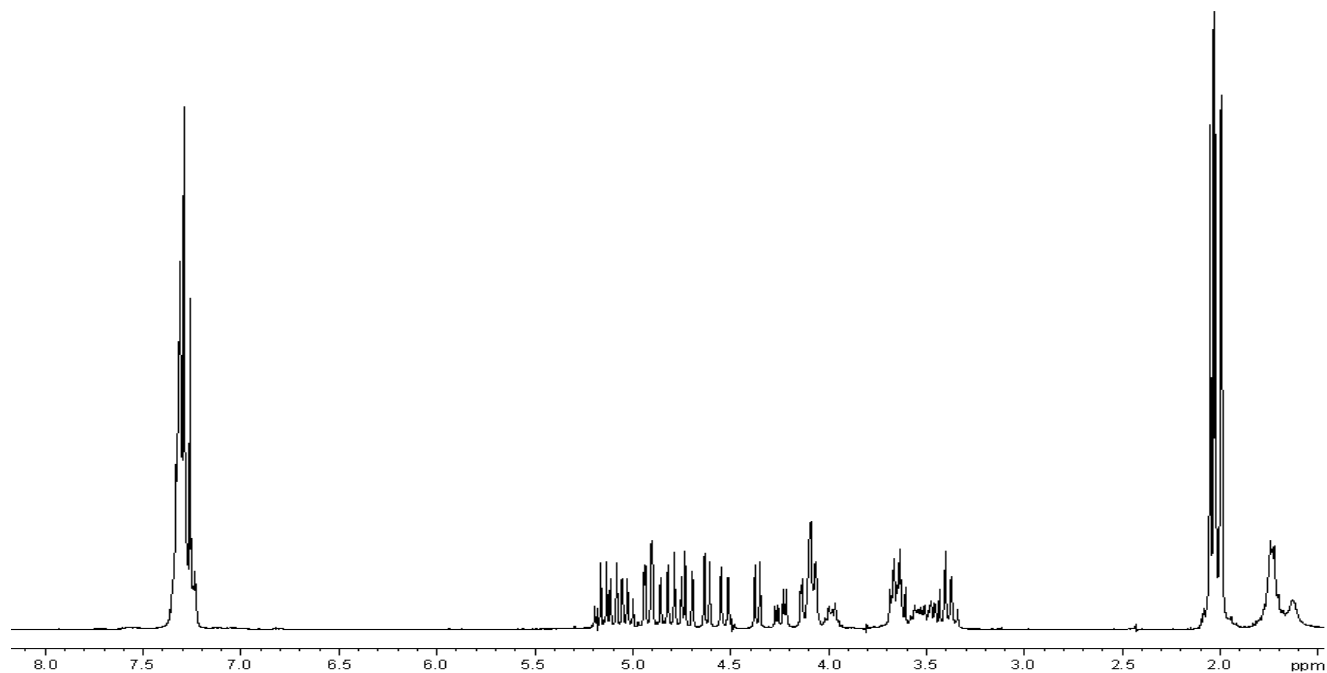
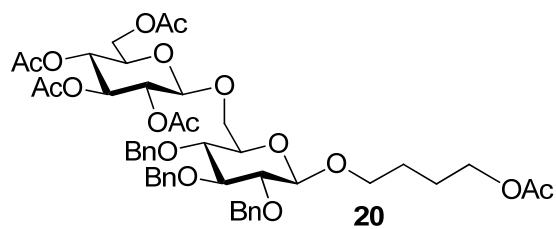
CDCl<sub>3</sub> at 300 MHz



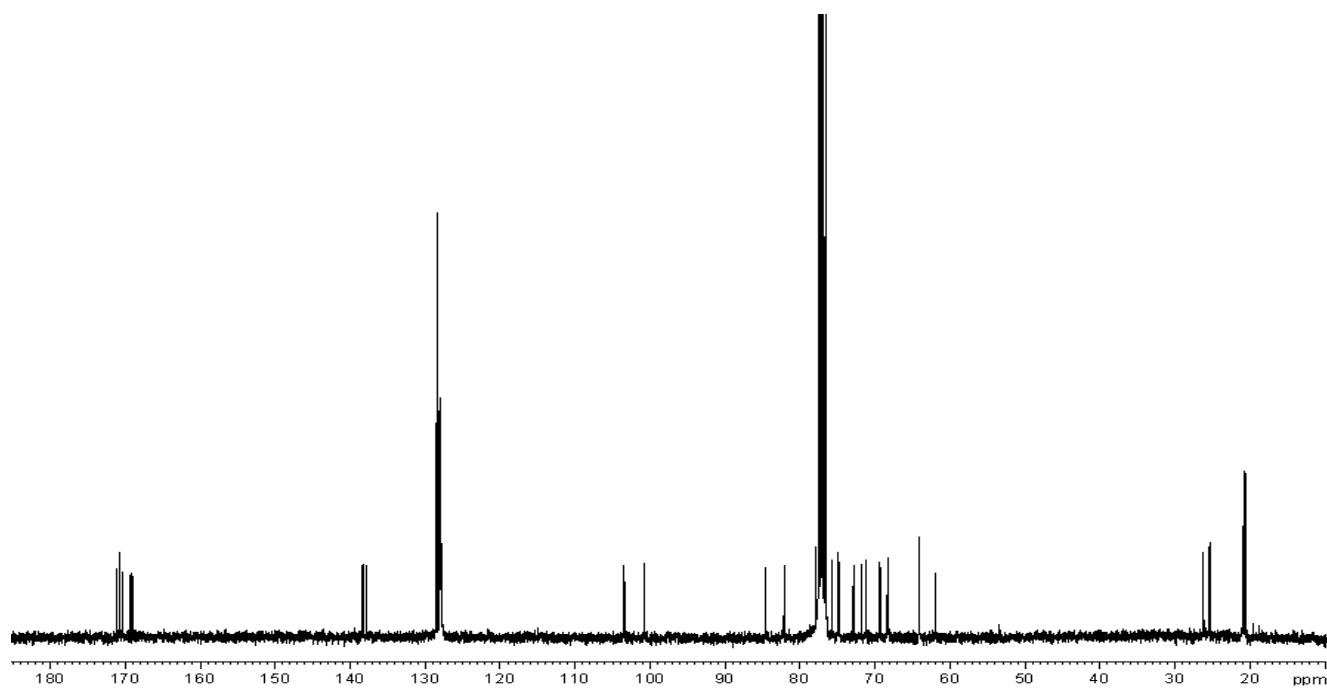




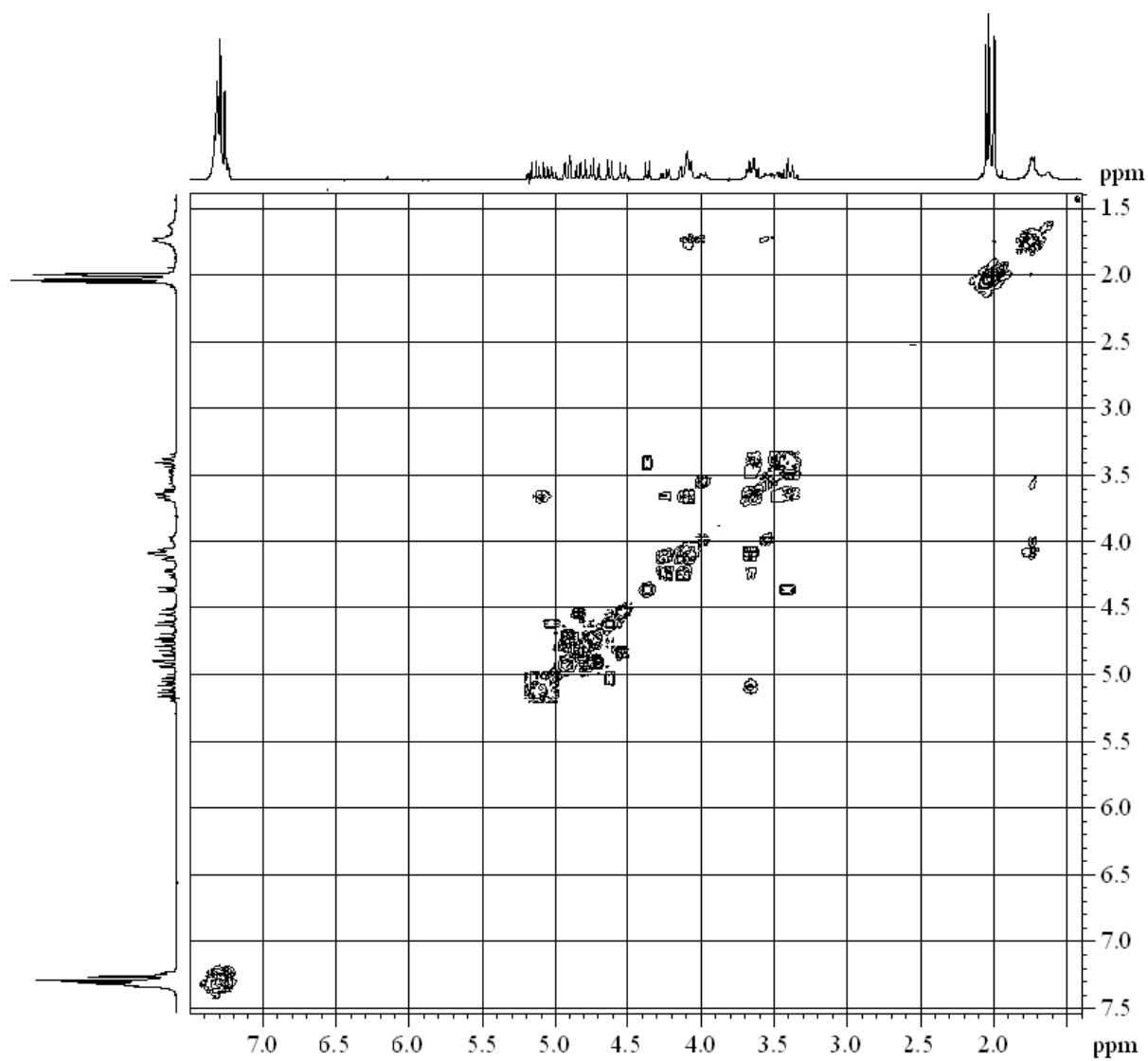
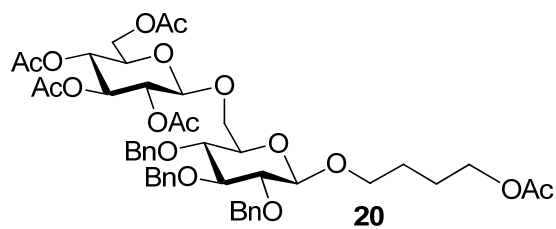
CDCl<sub>3</sub> at 300 MHz



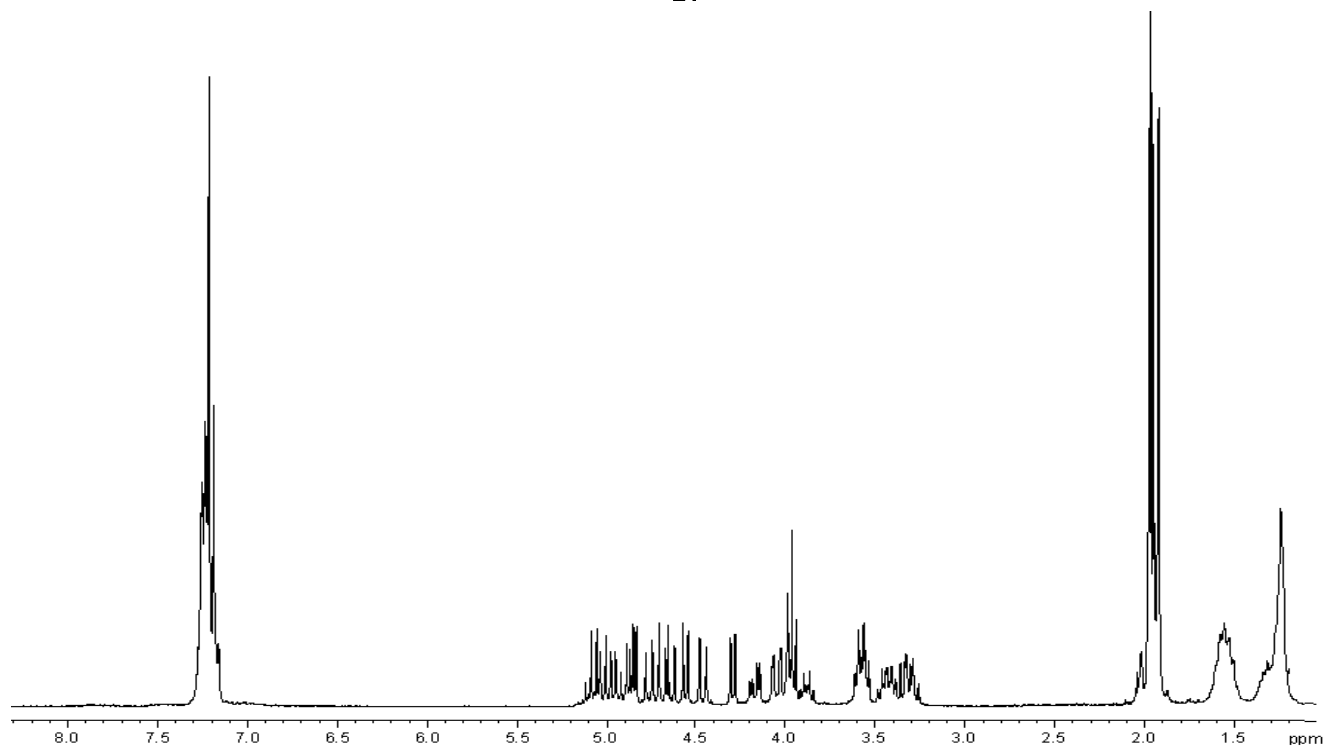
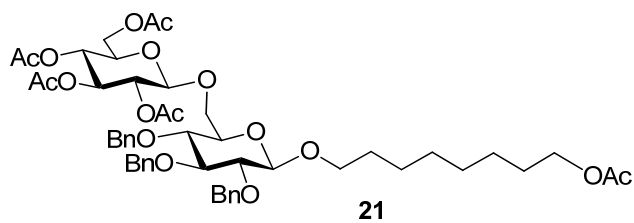
CDCl<sub>3</sub> at 300 MHz



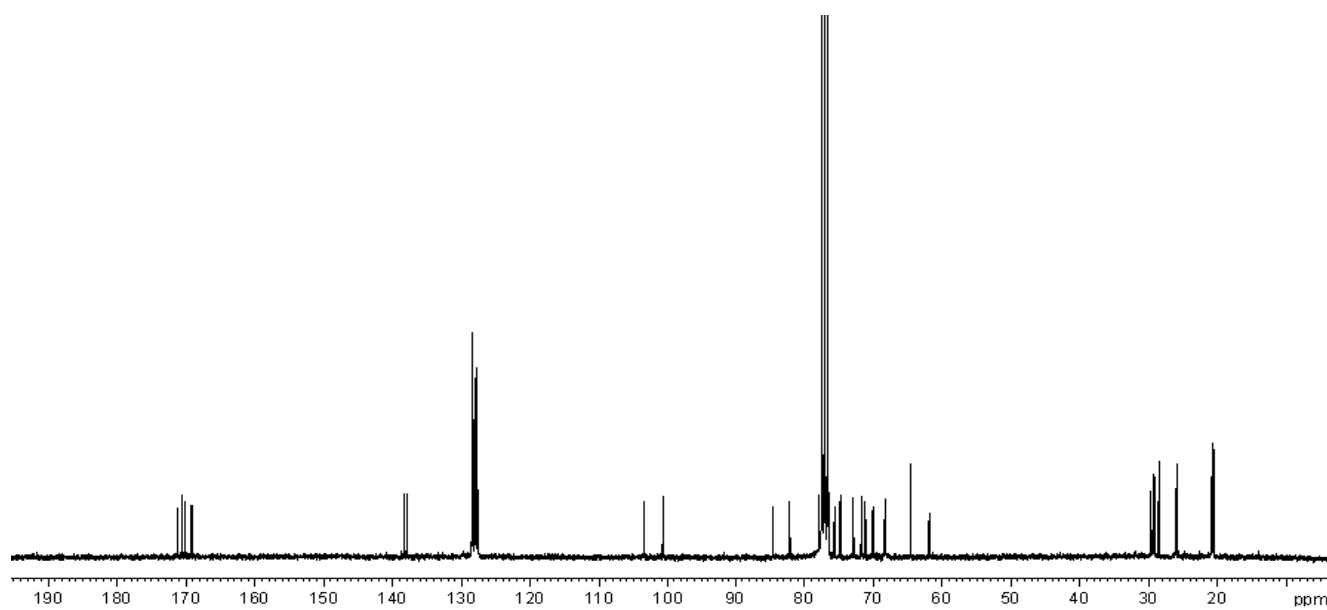
CDCl<sub>3</sub> at 75 MHz



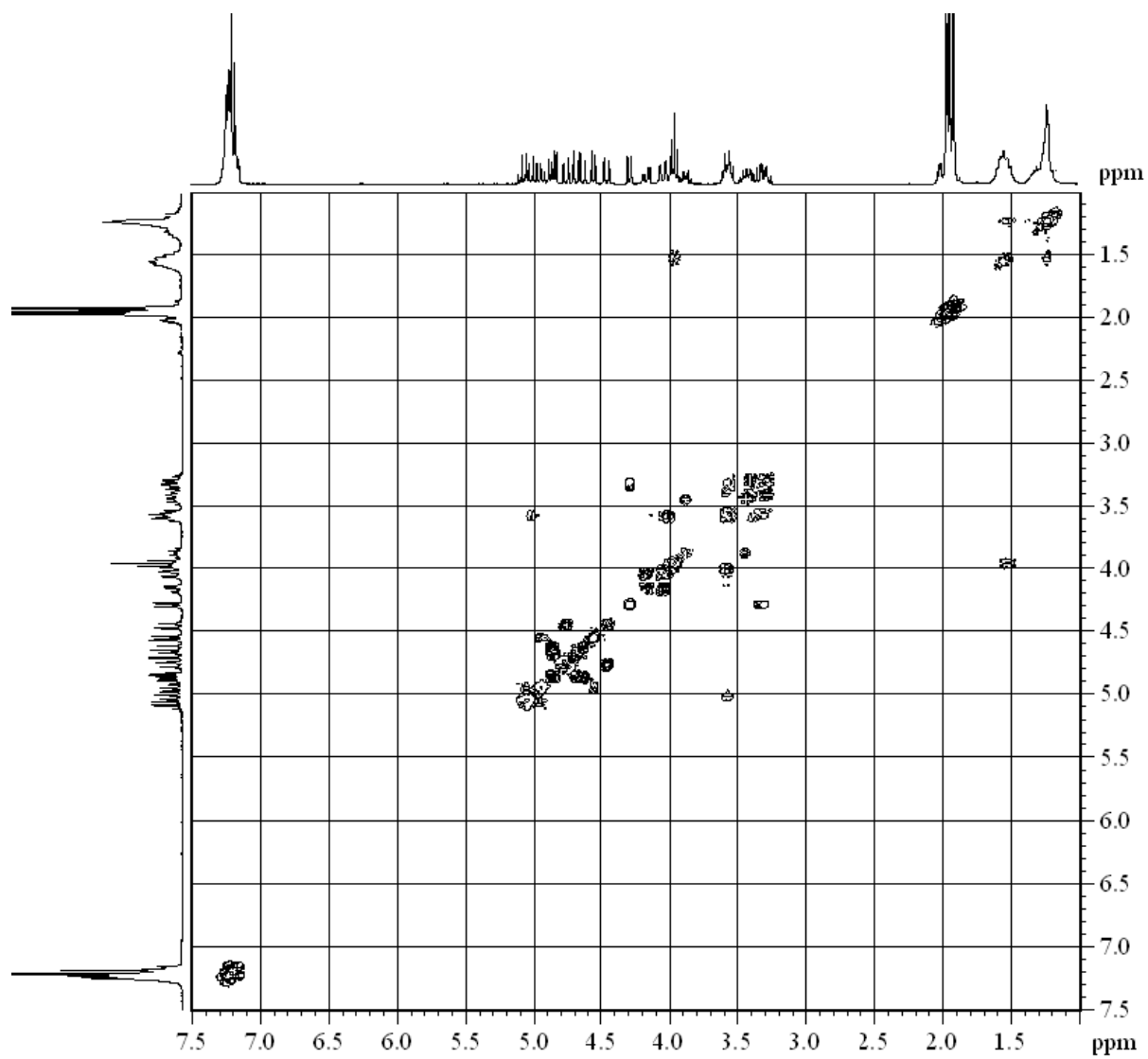
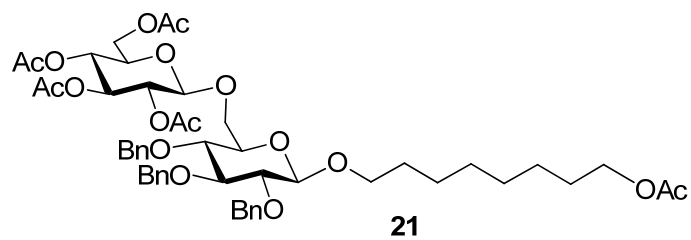
CDCl<sub>3</sub> at 300 MHz



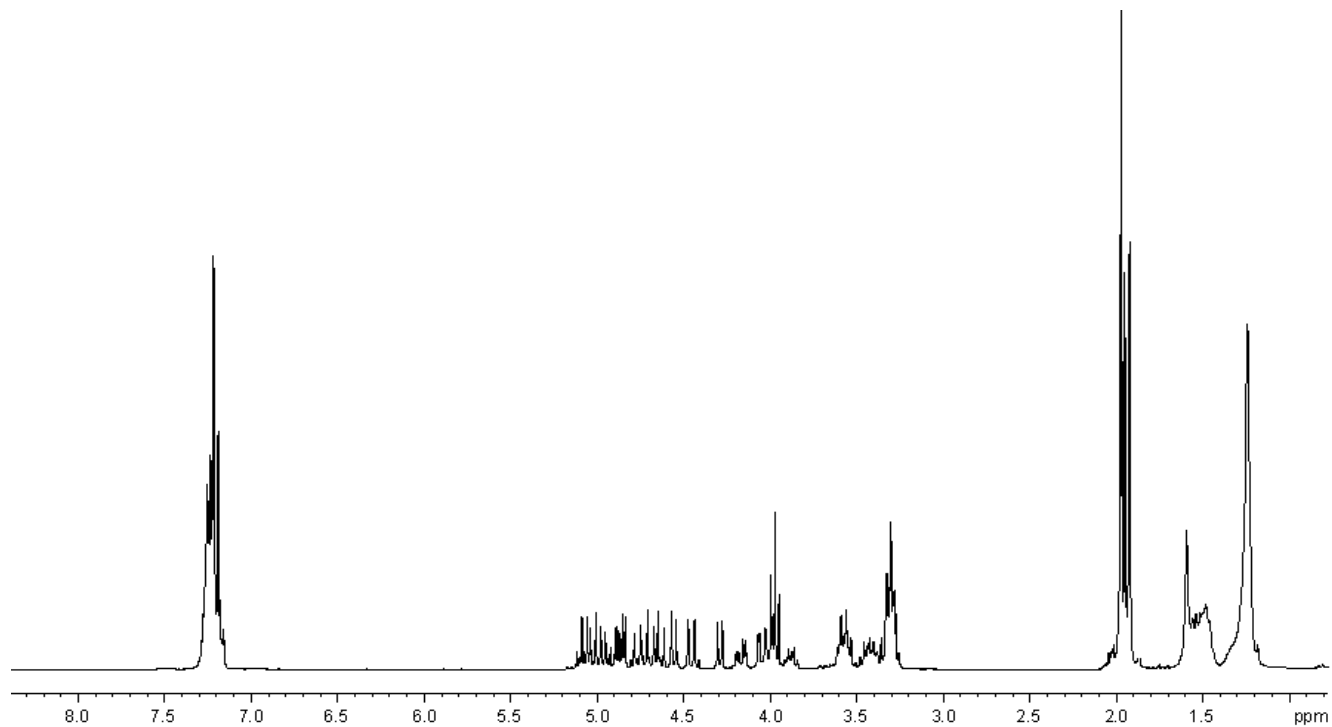
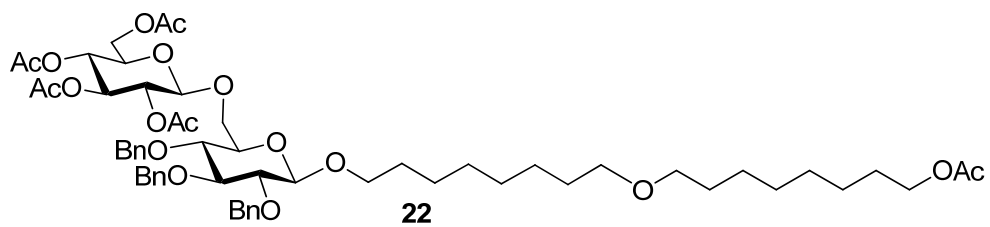
CDCl<sub>3</sub> at 300 MHz



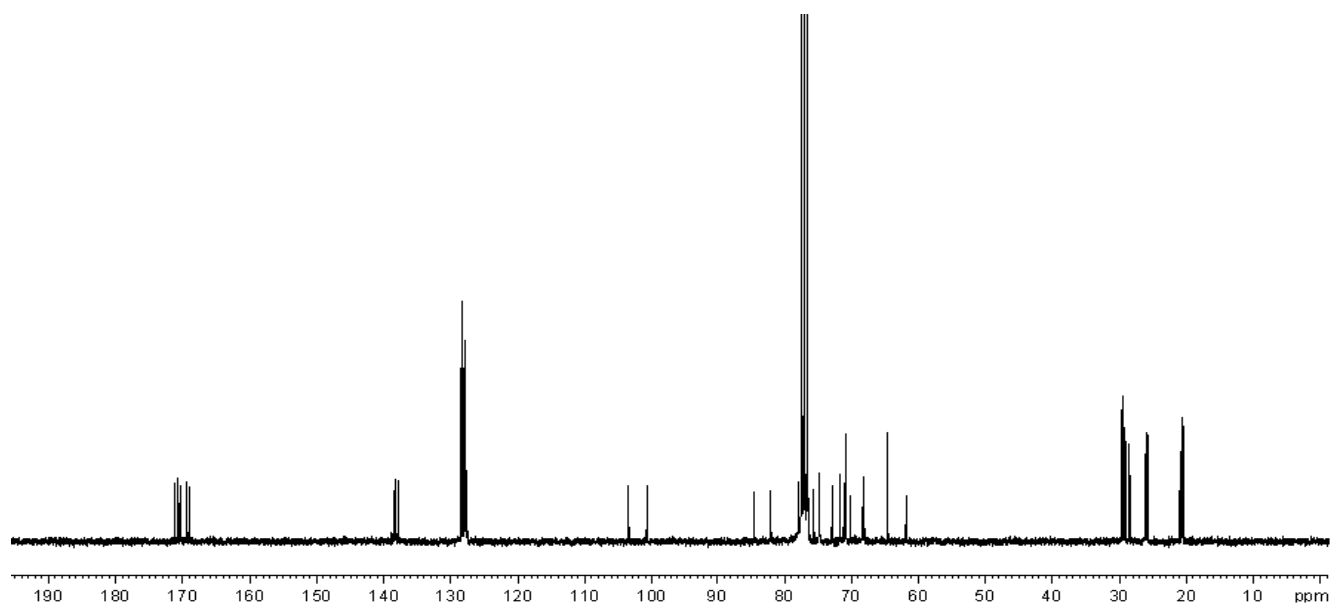
CDCl<sub>3</sub> at 75 MHz



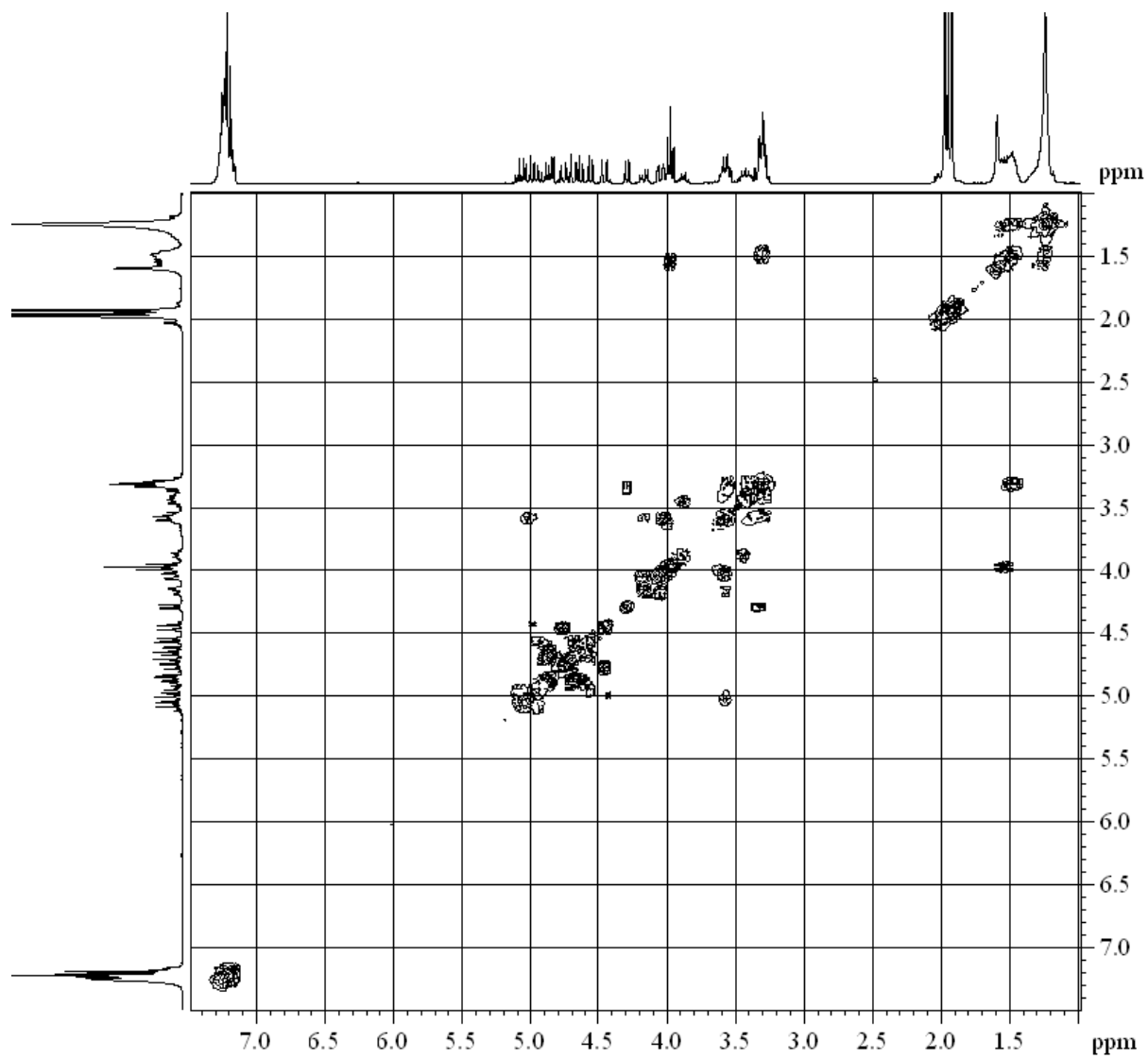
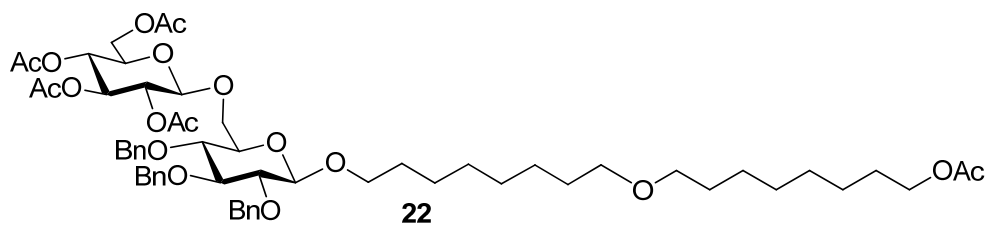
CDCl<sub>3</sub> at 300 MHz



CDCl<sub>3</sub> at 300 MHz



CDCl<sub>3</sub> at 75 MHz



CDCl<sub>3</sub> at 300 MHz