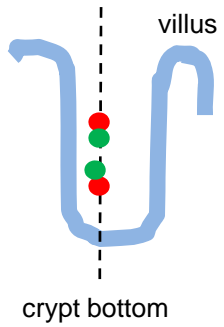
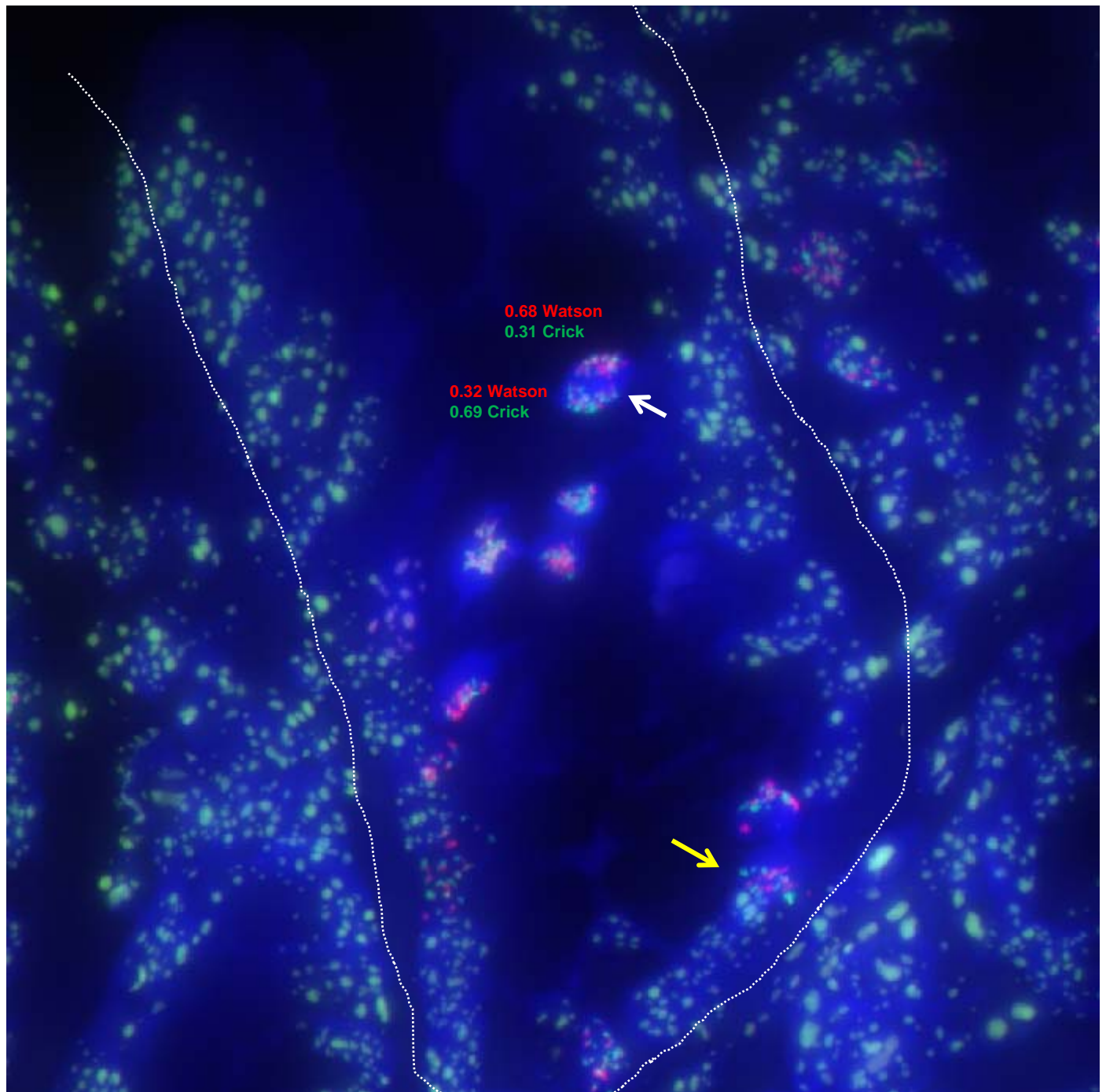


Original Image ID:
Sep21-05

Positional Information

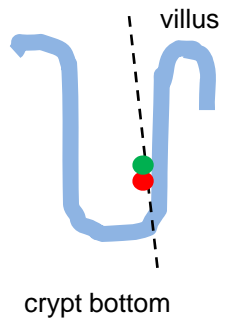


- positionally corresponds to transit-amplifying cell
- does not correspond to stem cell position
- likely stem cell towards bottom of crypt (yellow arrow)

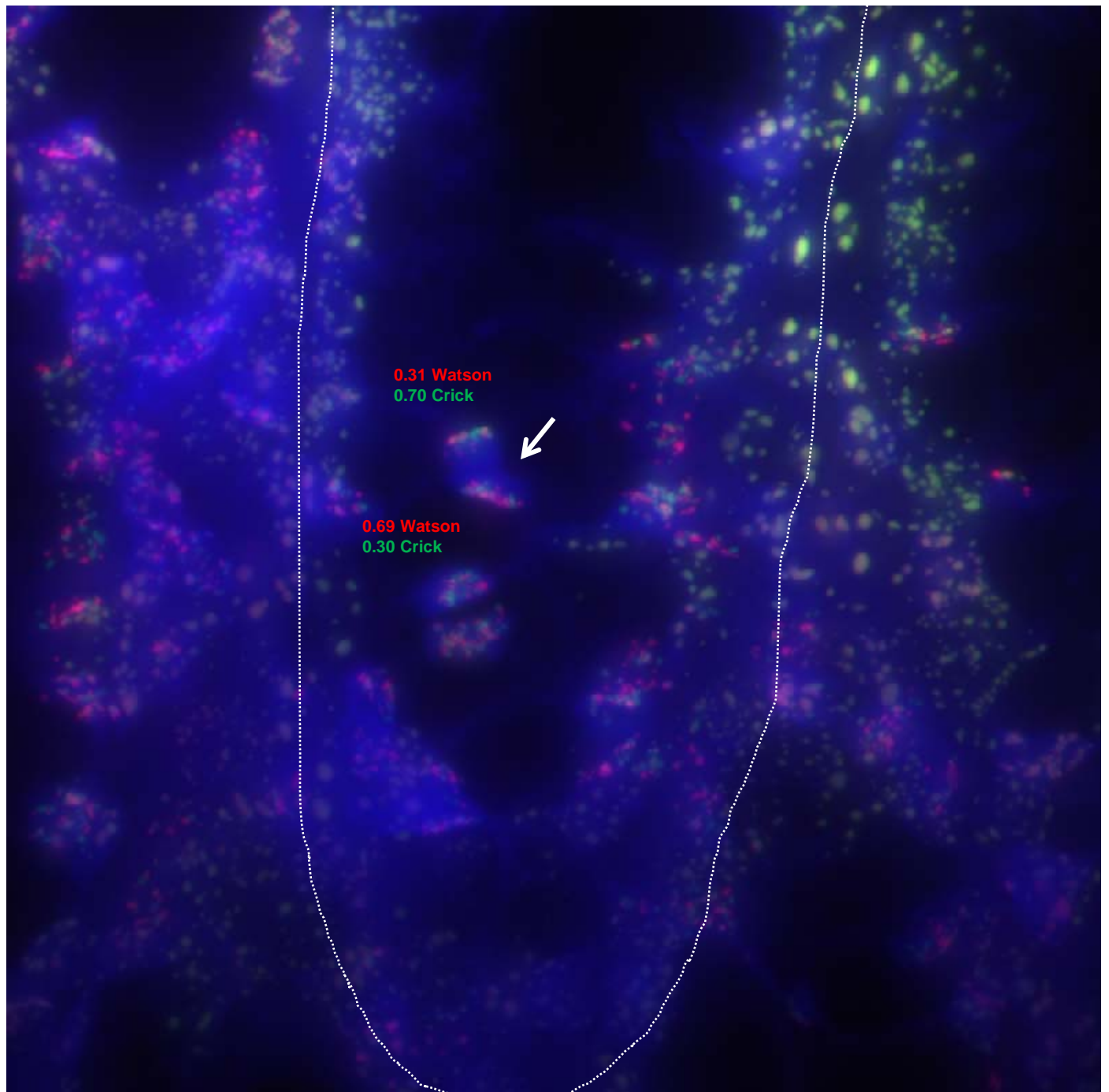


Original Image ID:
Aug2-49

Putative Positional Information

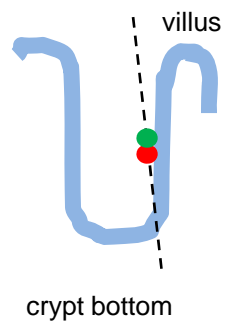


- positionally corresponds to transit-amplifying cell
- does not correspond to stem cell position at crypt bottom

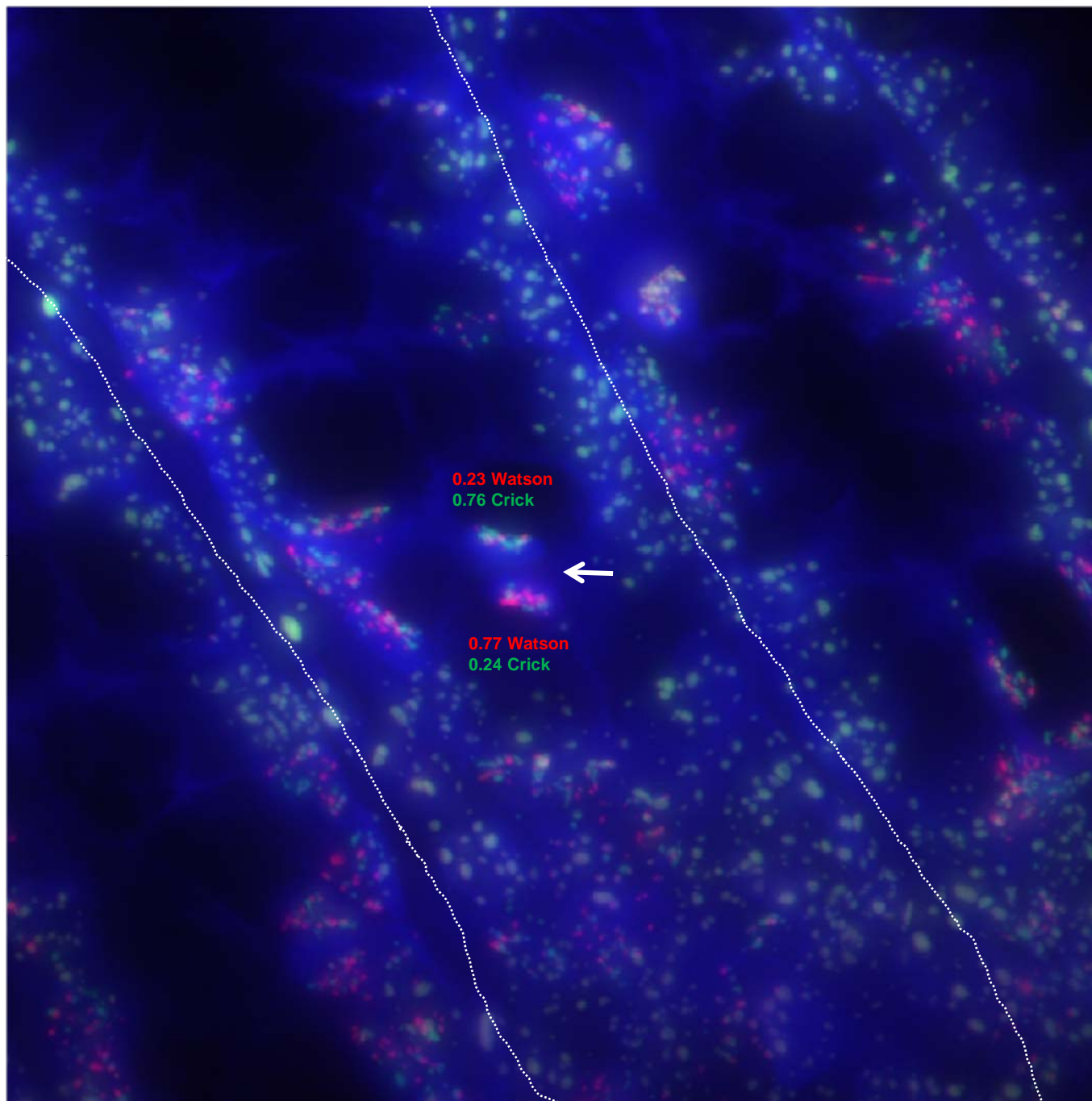


Original Image ID:
July30-25

Putative Positional Information

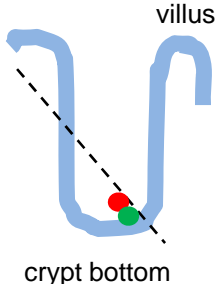


- positionally corresponds to transit-amplifying cell
- does not correspond to stem cell position at crypt bottom

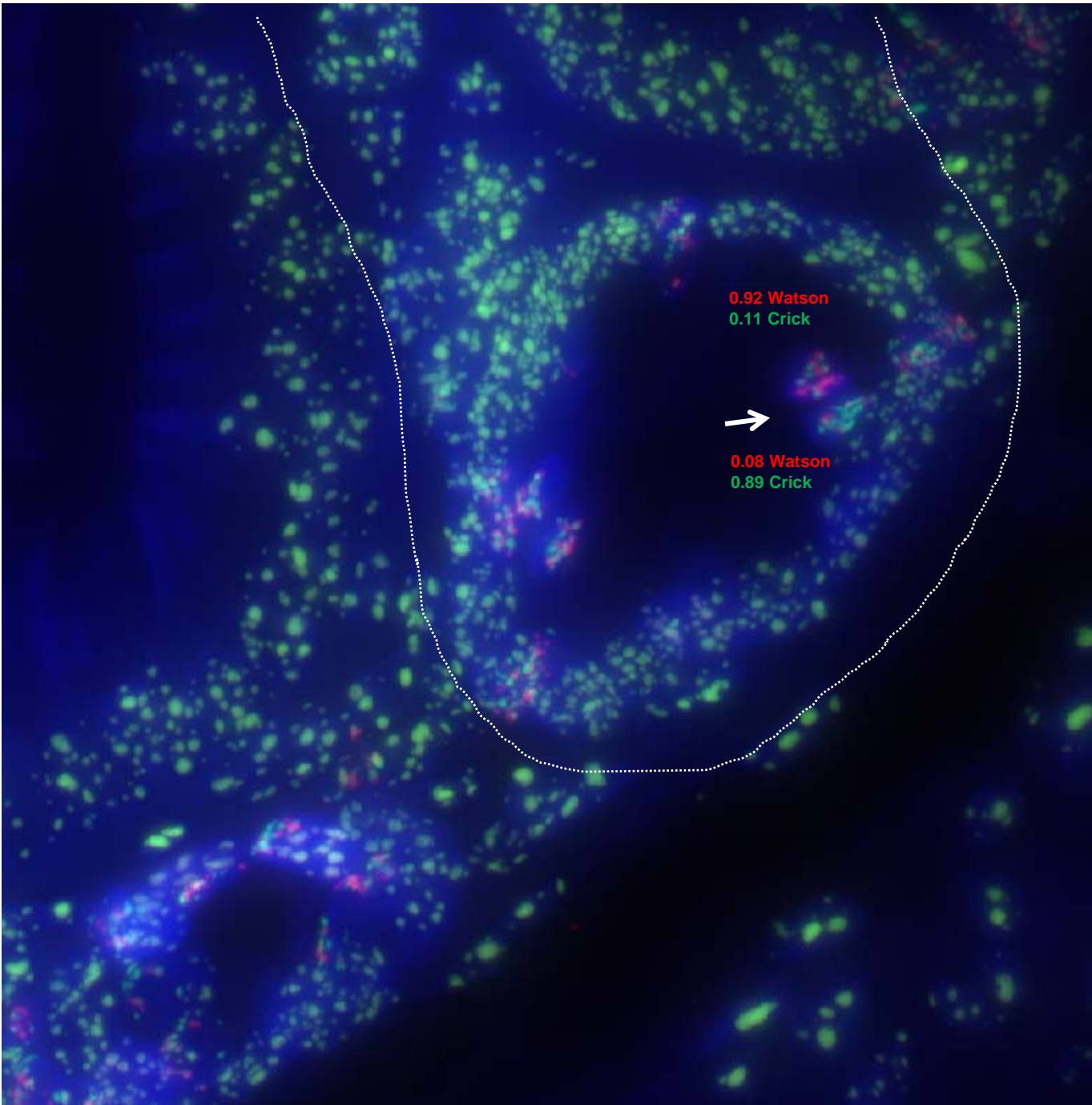


Original Image ID:
Aug10-108

Putative Positional Information

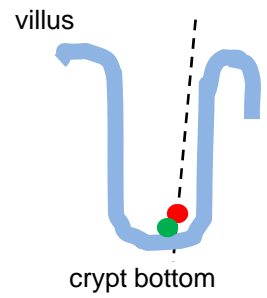


•may positionally correspond to stem cell

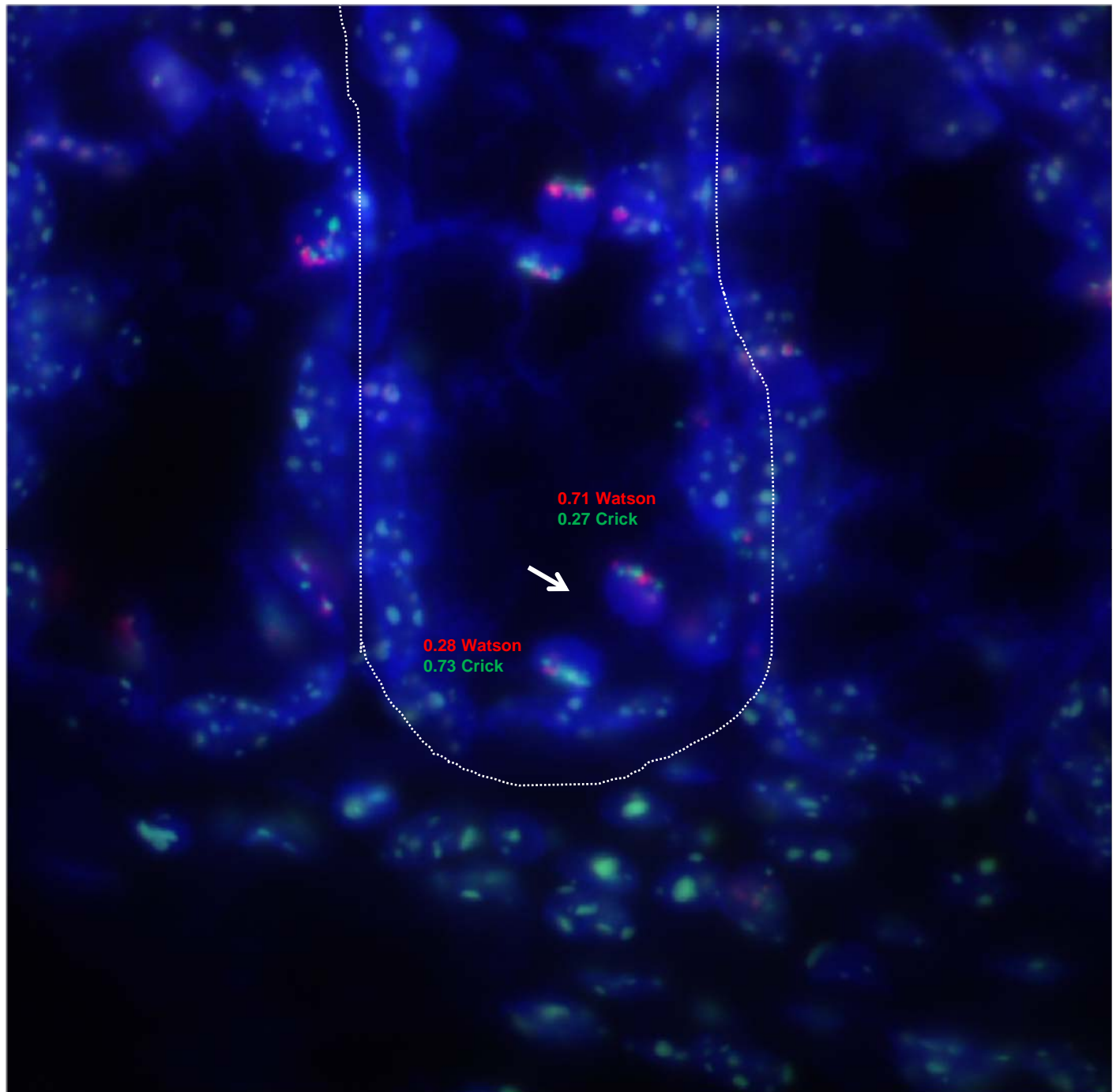


Original Image ID:
Oct9-03

Putative Positional Information

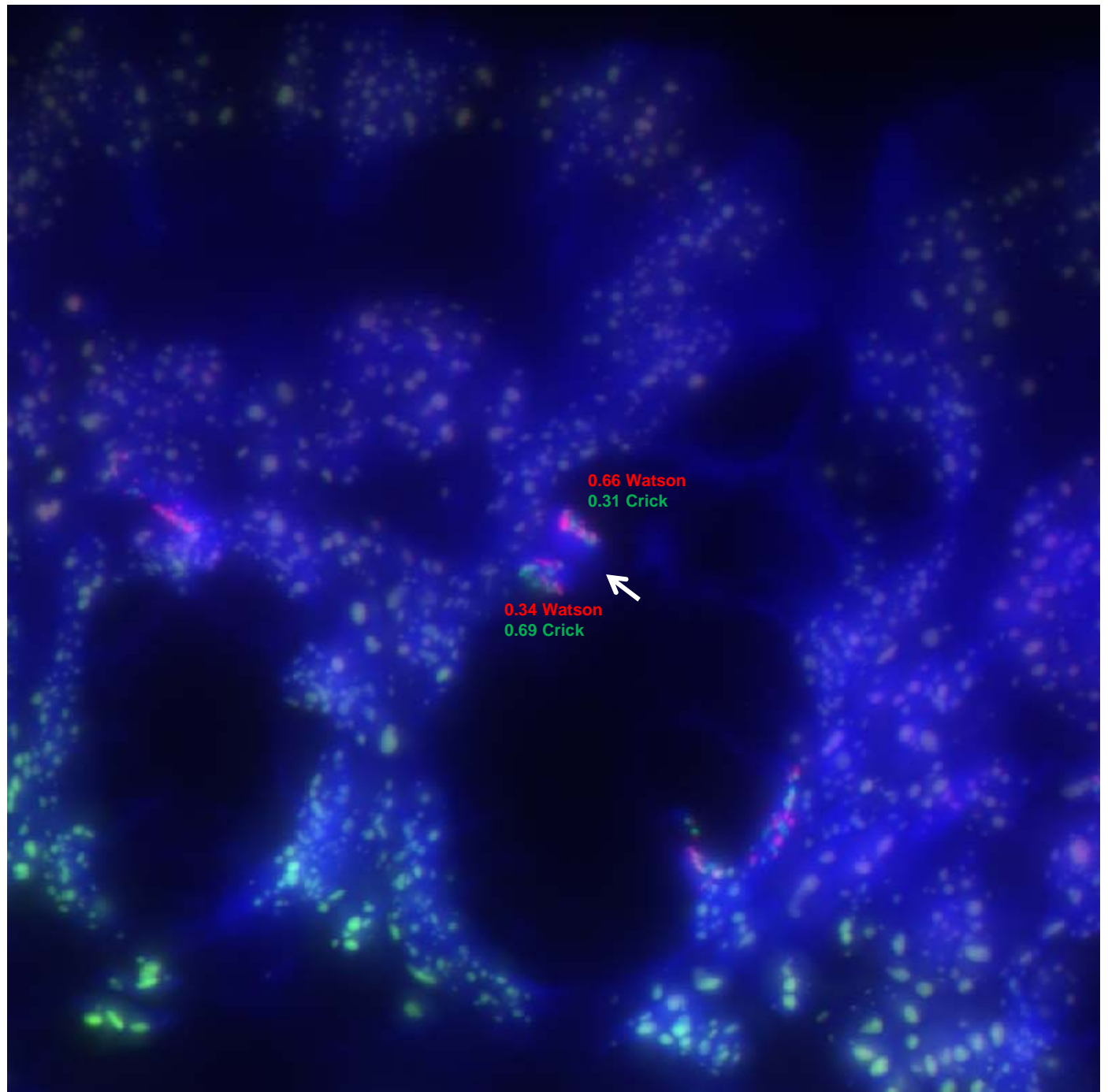


•may positionally correspond
to stem cell



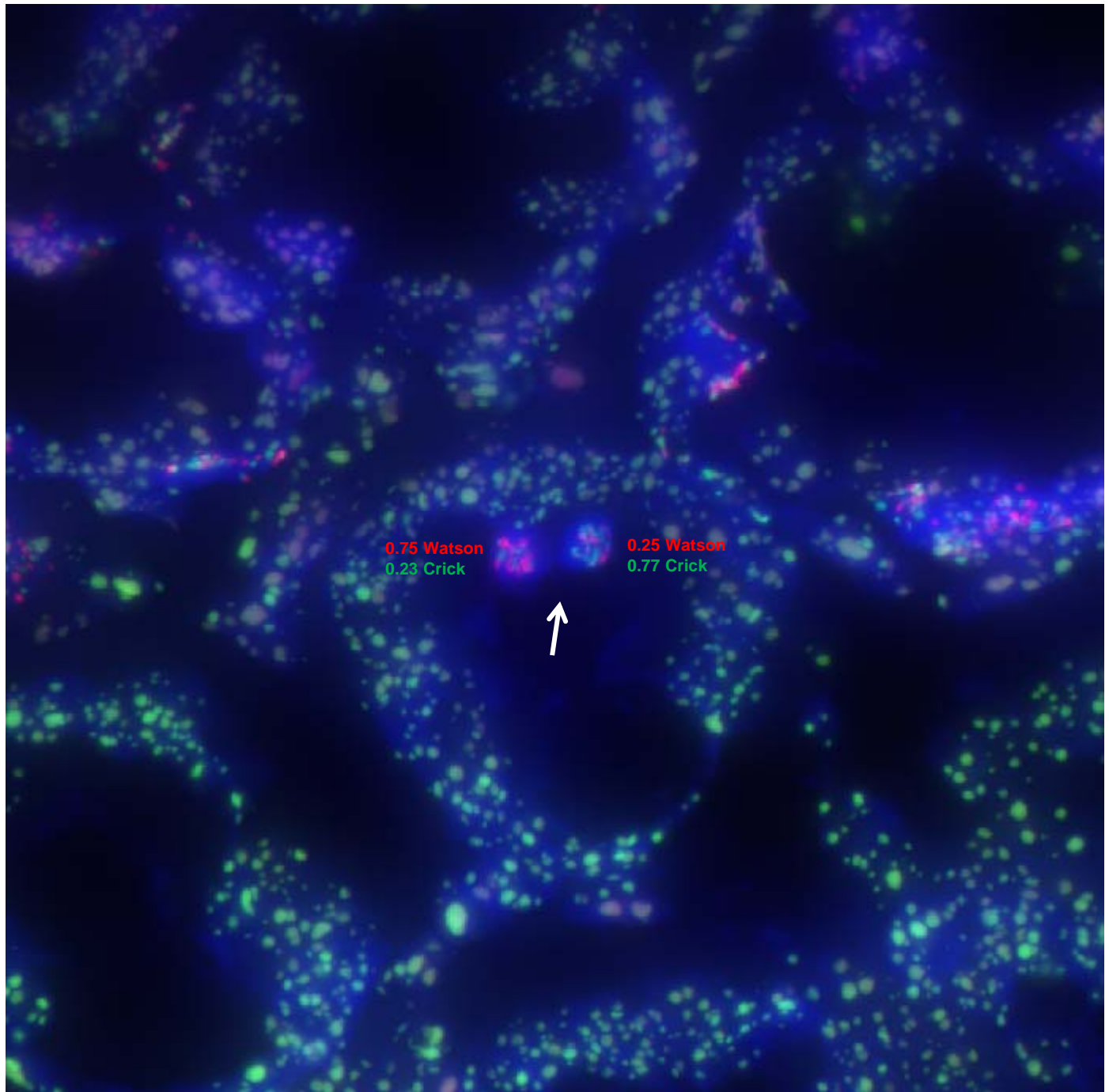
Original Image ID:
Aug7-77

•cannot determine exact crypt
position, but likely not crypt
bottom



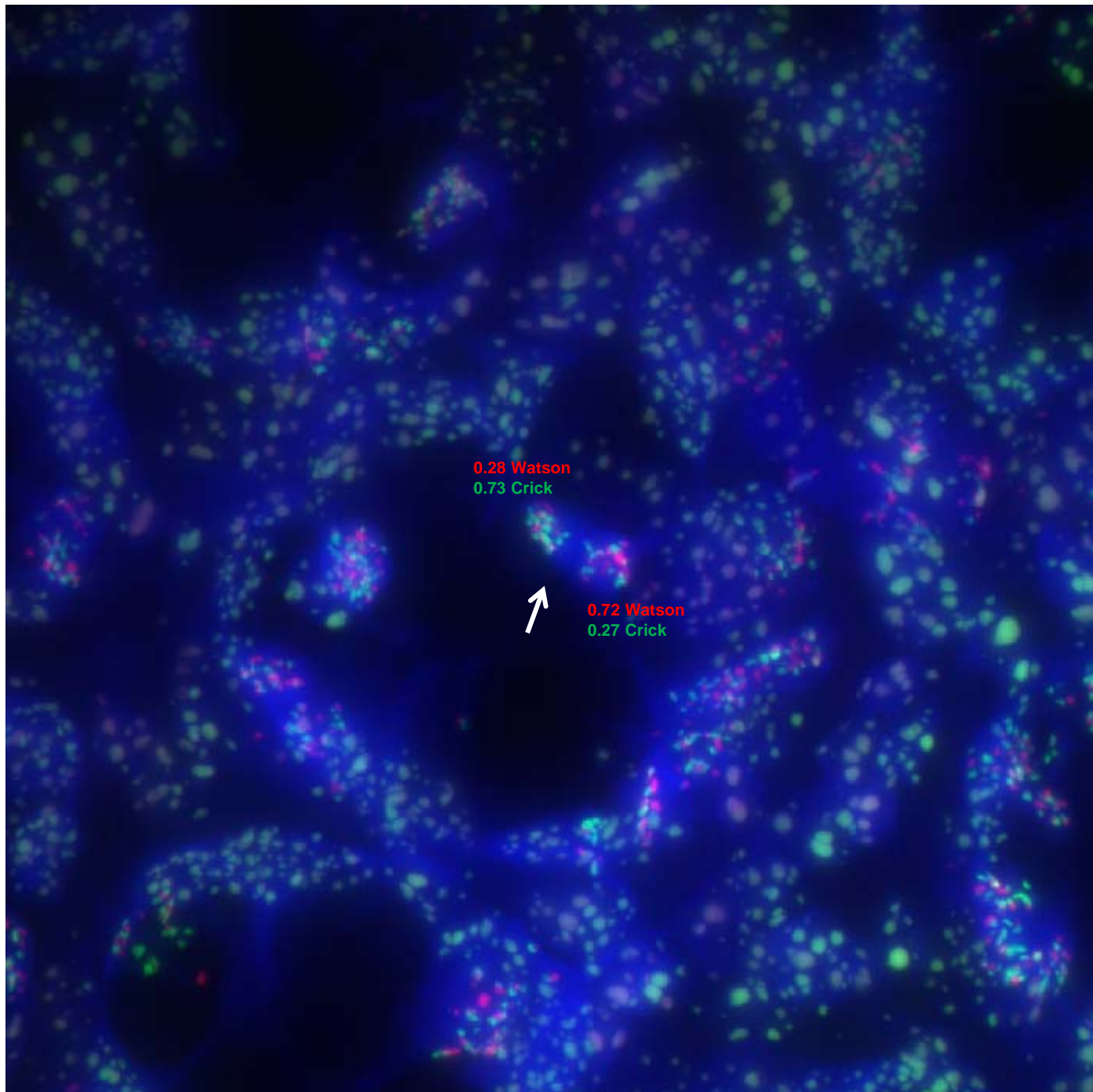
Original Image ID:
Nov13-02

•cannot determine exact crypt
position, but likely not crypt
bottom



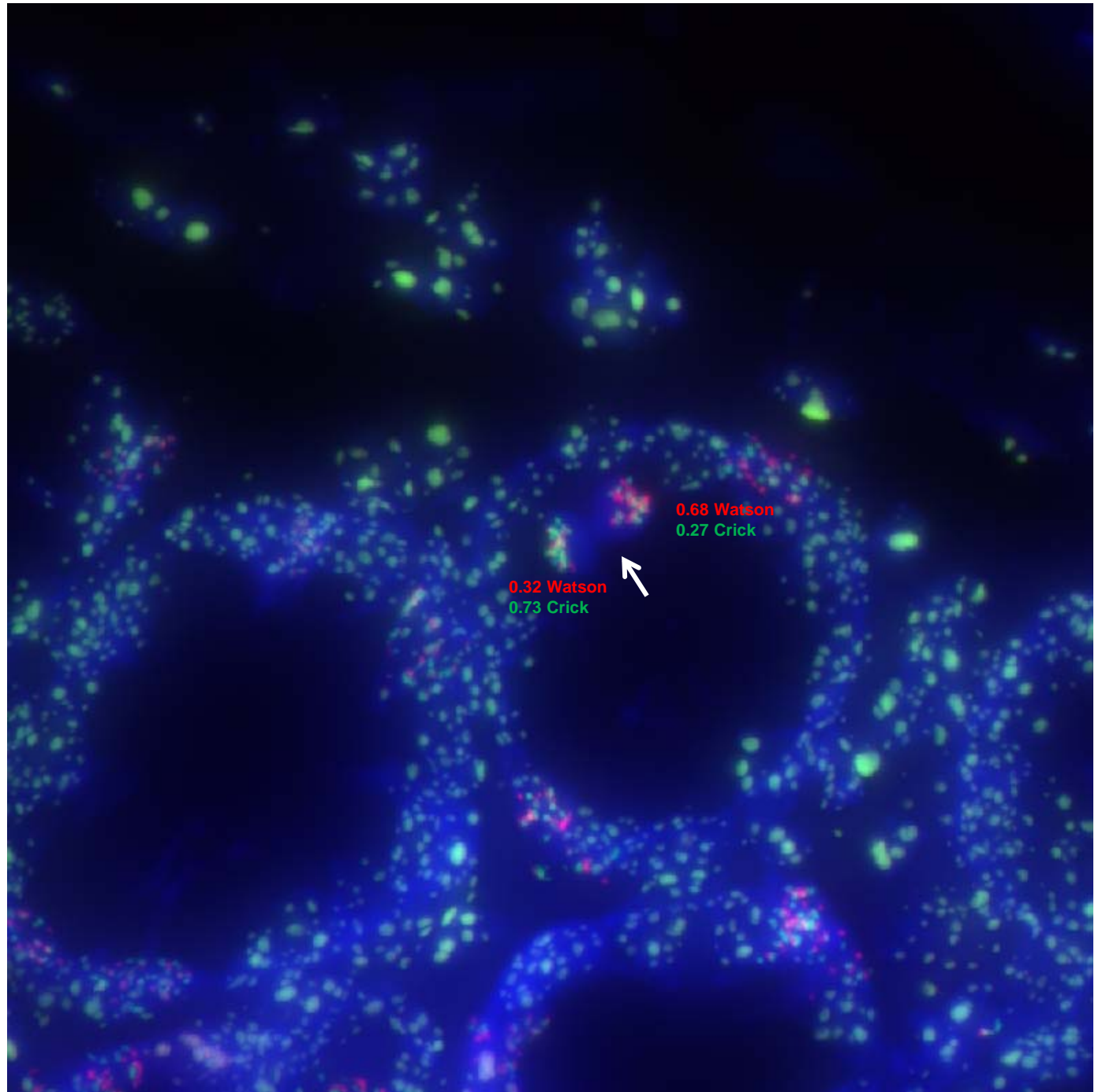
Original Image ID:
Nov13-08

•cannot determine exact crypt
position



Original Image ID:
Aug8-97

•cannot determine exact crypt
position



Original Image ID:
Oct9-04

•cannot determine exact
crypt position

