

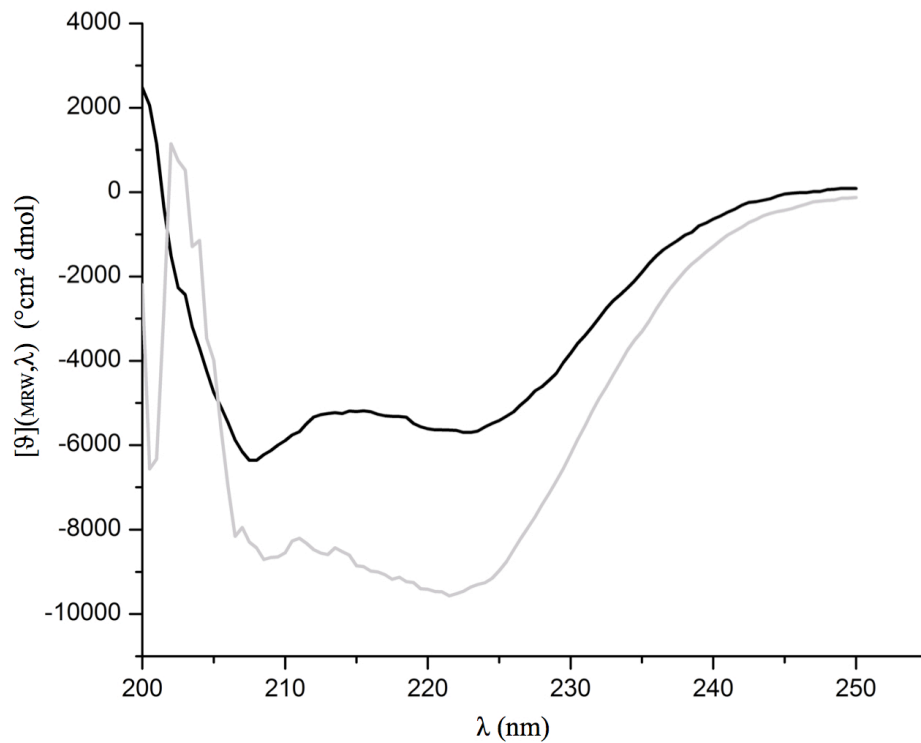
HigB2:

MGSSHHHHHSSGLVPRGSHMKSVFVESTIFEKYRDEYLSDEEYRLFQAELMLNPKLGDVVIQGTGGLRKIR
VASKGKGKRGGSRIIYYFLDEKRRFYLLTIYGKNEMSDLNANQRKQLMAFMEAWRNEQS

HigA2:

MSNRDLFAELSSALVEAKQHSEGKLTLLKTHHVNDVGELNISPDEIVSIREQFNMSRGVVFARLLHTSSRTLE
NWEQGRSVPNGQAVTLLKLVQRHPETLSHIAEL

Supplementary Figure S1. Amino acid sequences of the proteins used in this study. Wild-type amino acids are shown in black while the N-terminal tag of HigB2 is shown in red.



Supplementary Figure S2. CD spectra of purified antitoxin HigA2 (black line) and toxin HigB2 (gray line). Spectra were measured with a protein concentration of 0.5 mg/ml in 5 mM TRIS-HCl pH 8.0, 100 mM NaCl and are reminiscent of folded proteins.