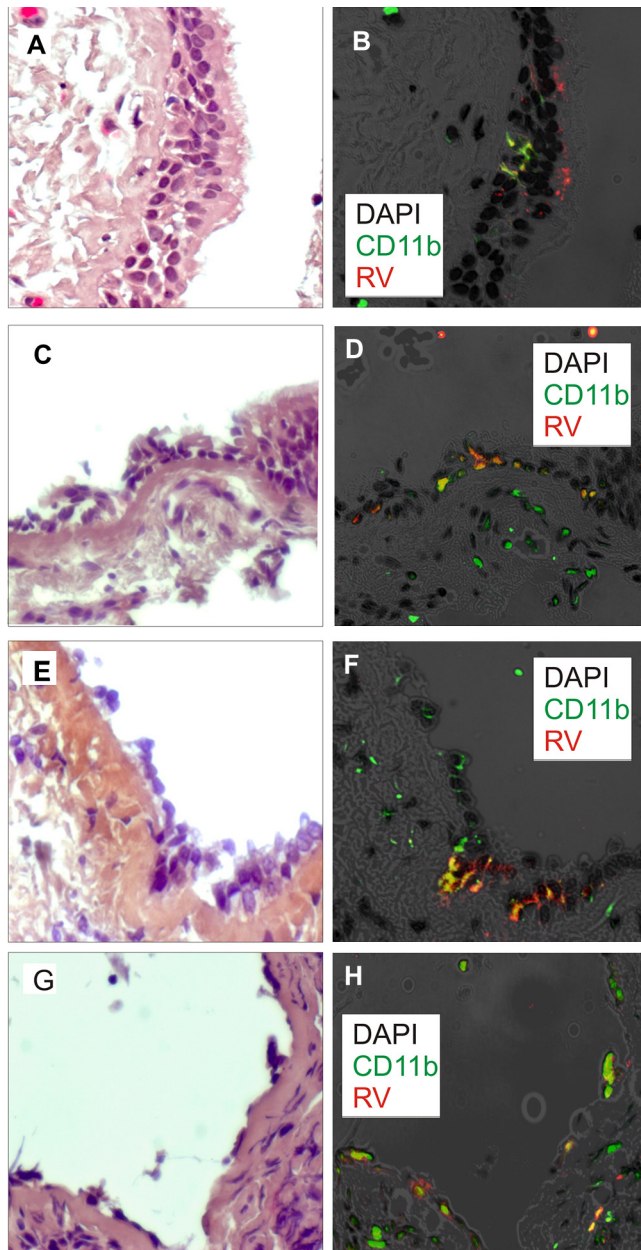


**FIG E1.** Images of bronchial epithelium from 6 adult subjects with asthma experimentally infected with RV16. **A, C, E, G, I, K,** Hematoxylin and eosin staining. **B, D, F, H, J, L,** Merged immunofluorescence images show staining for RV16 (red), CD68 (green), and DAPI (black). Sections show co-localization of RV16 and CD68 (yellow). (Original magnification,  $\times 640$ ). DAPI, 4'-6-Diamidino-2-phenylindole, dihydrochloride.



**FIG E2.** Images of bronchial epithelium from 4 subjects with asthma infected with RV16. **A, C, E, G,** Hematoxylin and eosin staining. **B, D, F, H,** Merged immunofluorescence images show staining for RV16 (red), CD11b (green), and DAPI (black). Sections show colocalization of RV16 and CD11b (yellow). (Original magnification, ×640). *DAPI*, 4'-6-Diamidino-2-phenylindole, dihydrochloride.

**TABLE E1.** RV16, CD68, CD11b, and CD11c in tissue samples from controls and asthmatic subjects experimentally infected with RV16\*

ID	Diagnosis	Accession no.	RV16	CD68	CD11b	CD11c
13	Control	02-059	+	+ (no colocalization)		
20	Control	02-076	+	–		
39	Control	03-143	–			
42	Control	03-127	+	–		
1	Asthma	01-037	+	+ (colocalization)	+ (colocalization)	+ (no colocalization)
3	Asthma	02-043A	+	+ (colocalization)	+ (colocalization)	+ (no colocalization)
4	Asthma	02-043B	–			
5	Asthma	02-049	+	+ (colocalization)	+ (colocalization)	+ (colocalization)
24	Asthma	03-106	+	–		
27	Asthma	03-096	+	+ (colocalization)		
30	Asthma	03-097	+	+ (colocalization)		
33	Asthma	03-110	+	+ (colocalization)		
36	Asthma	03-125	–			
37	Asthma	03-107	–			
45	Asthma	03-136	+	+ (colocalization)		

\*Empty cells indicate that the staining was not completed.