

Figure S1: Constitutive elevation of NCoR^{S2436} phosphorylation in DU145 and PC-3 cells , LNcaP-derivative C4-2B cell line. Whole cell lysates were analyzed by western blotting with indicated antibodies.

Oncomine database analysis

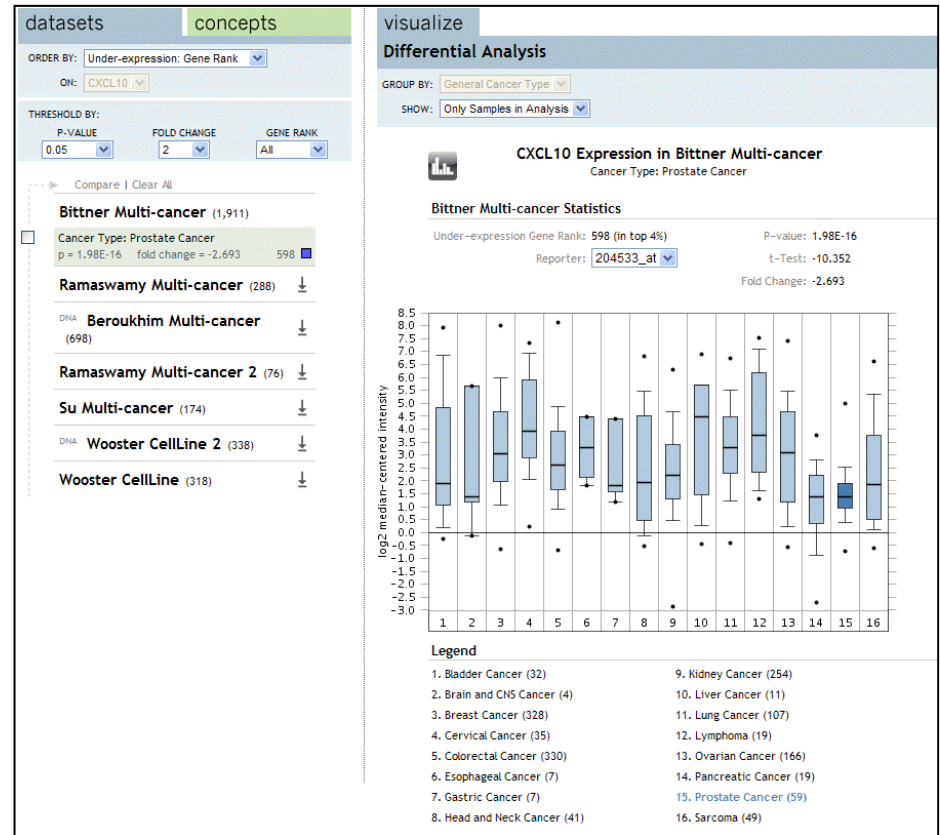
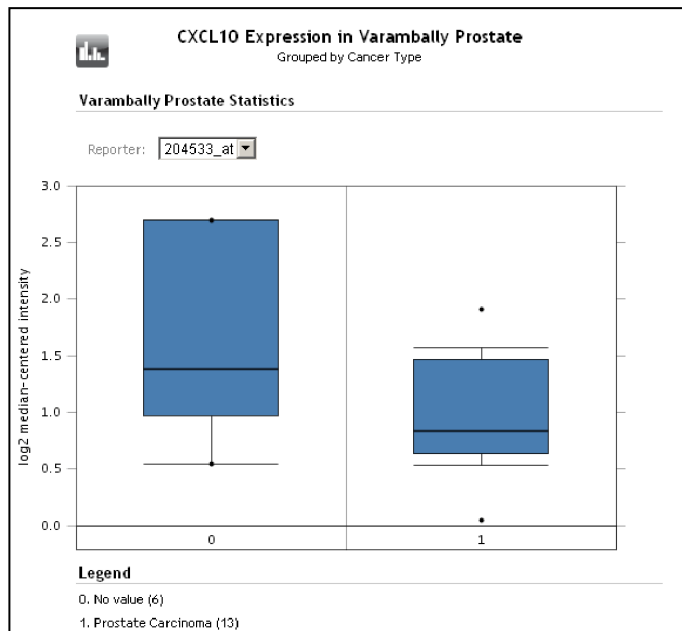


Figure S2: Decrease levels of IP-10 mRNA in prostate carcinoma. Oncomine 4.3 analysis for the expression patterns of IP-10 in normal and prostate cancer tissues.

A*Matrigel invasion assay (PC-3)*

TBB	-	+	-	-	-	-	-	-	-
siCon	-	-	+	-	-	-	-	-	-
siCK2	-	-	-	+	-	-	-	+	-
siNCoR	-	-	-	-	+	-	-	-	+
IP-10	-	-	-	-	-	+	+	+	+

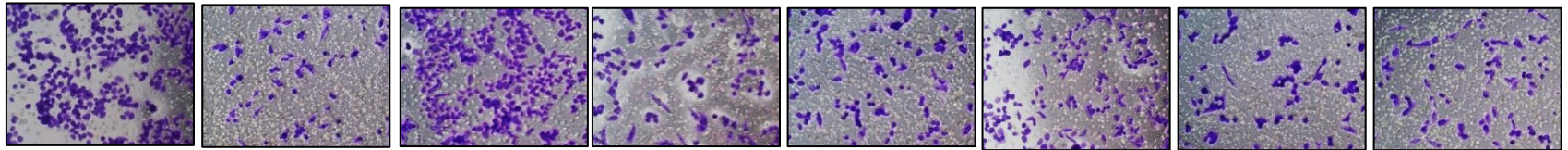
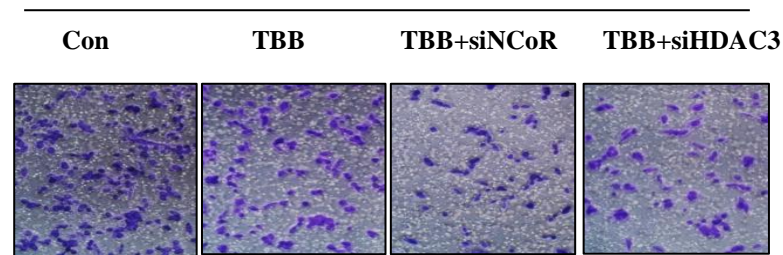
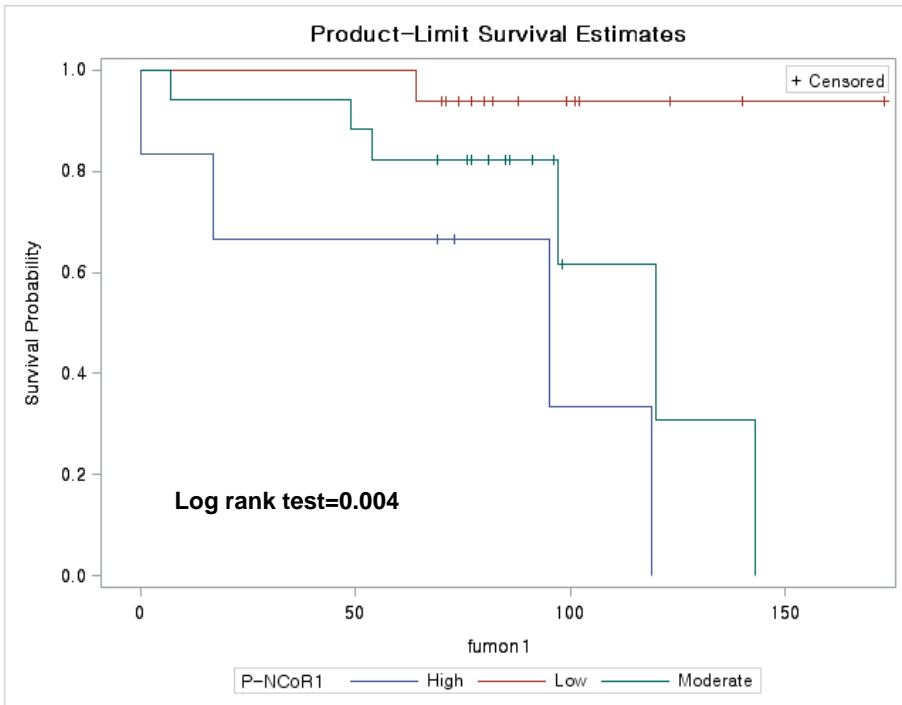
**B***Matrigel invasion assay (PC-3)*

Figure S3: Blocking of CK2-NCoR axis suppresses the invasive growth of PC3 cells. PC3 cells were transfected with either siRNAs or IP-10 plasmid in the presence or absence of TBB. To measure the invasiveness of PC3 cells, the cells were transfected with the indicated plasmids and then seeded in the upper chamber. Cells that successfully invaded were stained with 1% crystal violet. Original magnification, $\times 400$.

Gleason ≤ 7 (n=39)



Gleason ≥ 8 (n=16)

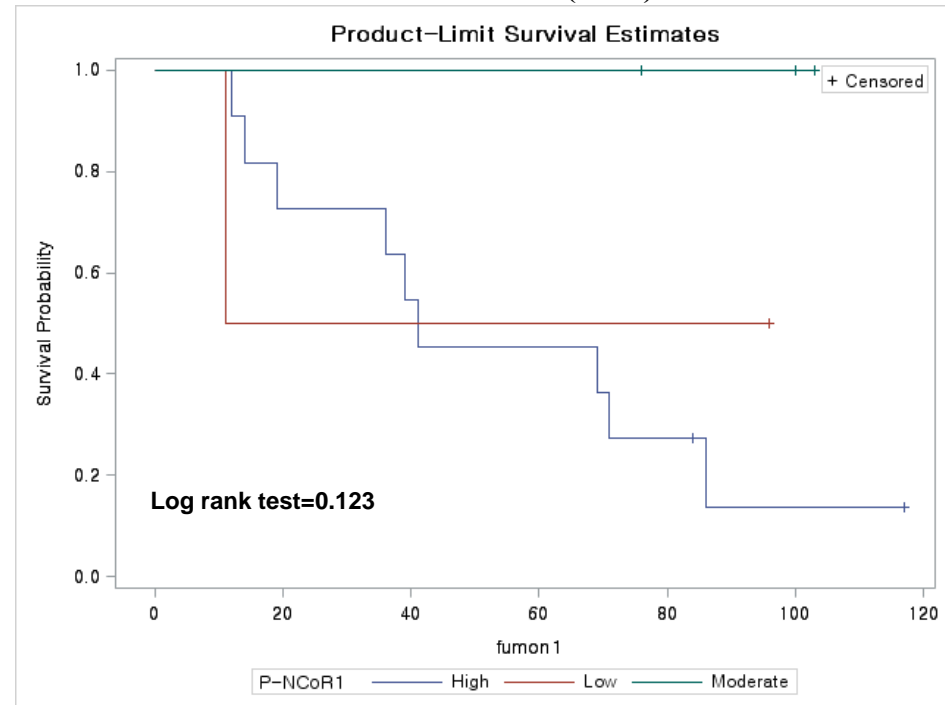


Figure S4: The survival curves of patients with low Gleason scores (≤ 7) were significantly different among NCoR phosphorylation statuses. We calculated the survival rates by Kaplan–Meier survival curve analyses after stratification of the patients by Gleason scores (≤ 7 and ≥ 8).