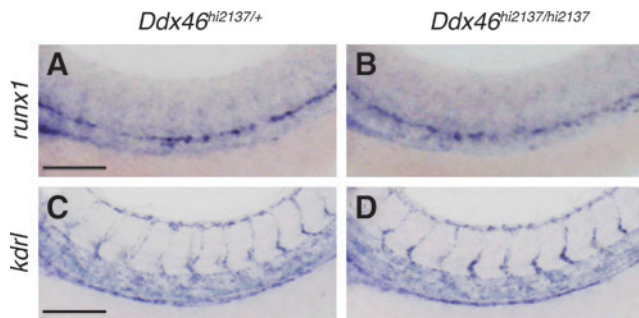


Supplementary Data



SUPPLEMENTARY FIG. S1. Expression of *runx1* and *kdrl* is normal in *Ddx46*^{hi2137/hi2137} mutants. (A–D) The expression of *runx1* and *kdrl* was examined by whole-mount in situ hybridization at 48 hpf. All are lateral views, anterior to the left. The expression of *runx1* and *kdrl* was indistinguishable between *Ddx46*^{hi2137/+} (*runx1*, $n=25/25$; *kdrl*, $n=7/7$) and *Ddx46*^{hi2137/hi2137} larvae (*runx1*, $n=13/13$; *kdrl*, $n=7/7$). Scale bars represent 100 μm . hpf, hours postfertilization; *kdrl*, kinase insert domain receptor like.