

Supplementary Figure 1

A.

miR-34a/ RNU expression after NTC or 34A mimic transfection

	34A PCR	34B PCR	34C PCR	34A std dev	34 B std dev	34C std dev
no reagent	6.4	0.0	0.1	4.7	0.0	0.1
NTC	0.0	0.0	0.0	0.0	0.0	0.0
34A mimic	80249	10.1	0.0	3362	0.0	0.0
34B mimic	0.1	25976	2.8	0.1	6028	0.4
34C mimic	0.0		31579	0.1	0.0	4584

B.

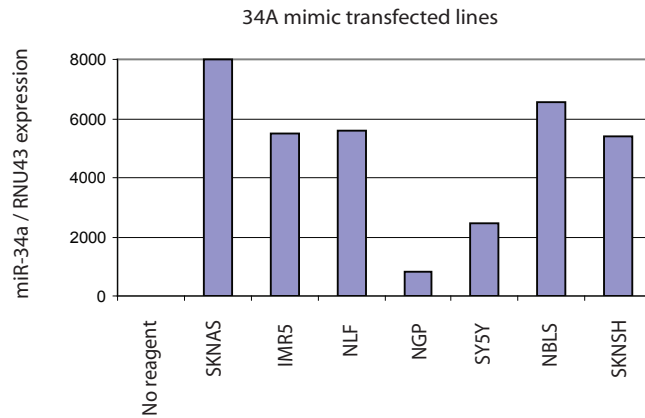


Figure S1: A. miR mimics could be measured by quantitative microRNA RT-PCR. SK-N-AS cells were transfected with miR-34a, b, or c mimics and then analyzed by microRNA RT-PCR (as described in material and methods). “no reagent” indicates that no Dharmafect I was added. B. Over-expression of miR-34A is achieved in all of the neuroblastoma cell lines.

Supplementary figure 2

NLF	G0/G1 (%)	S phase (%)	G2/Gm (%)	Sub G0 (%)	SKNAS	G0/G1 (%)	S phase (%)	G2/Gm (%)	Sub G0 (%)
24N	53.12	28.86	15.53	1.13	24N	59.85	22.59	15.79	0.66
24A	76.09	10.81	11.91	0.8	24A	63.75	18.62	15.61	0.94
48N	66.38	18.27	12.55	2.27	48N	59.35	22.9	16.14	0.62
48A	81.45	9.77	5.03	3.05	48A	68.62	14.82	15.15	0.6
72N	63.71	21.44	13.11	0.68	72N	61.6	21.33	15.72	0.48
72A	85.99	6.67	4.94	1.61	72A	70.89	12.4	14.58	1.03
96N	63.33	19.3	16.06	0.66	96N	65.66	18.23	14.21	0.98
96A	86.91	5.93	4.93	1.44	96A	72.23	10.71	12.95	2.29

Figure S2. Representative time course analysis of the cell cycle for NLF and SKNAS cell lines transfected with the non targeting control miRNA (NTC) or miR-34a mimic. Values are % of cells gated.

Supplementary figure 3

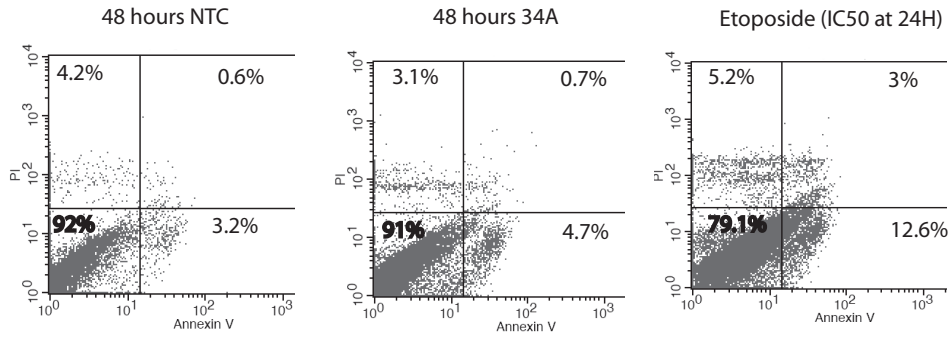


Figure S3: FACS scatter plots of FITC Annexin V of IMR5 cells treated with and without miR-34A mimic and an etoposide positive control . The x - axis is Annexin V staining and the y - axis is PI staining. Values are % of cells gated in a quadrant.

Supplementary figure 4

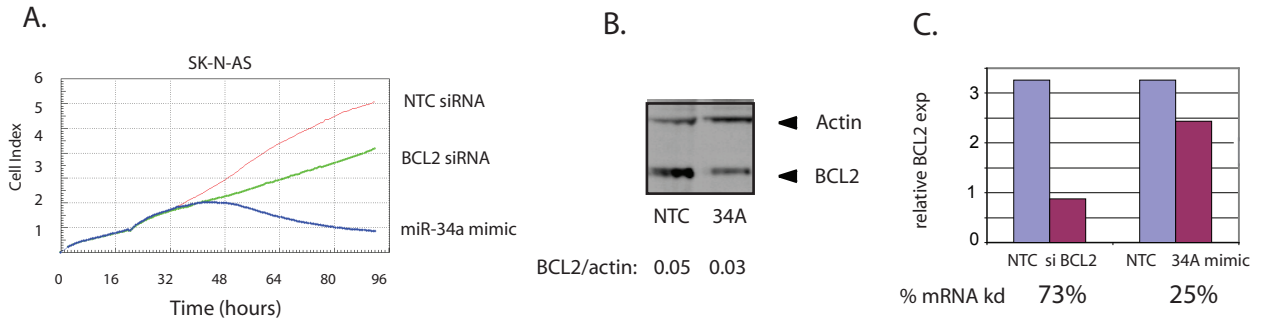


Figure S4: A. BCL2 siRNA knockdown has a modest growth inhibitory effect on SK-N-AS growth. NTC = non targeting control siRNA. B. Western blot 48 hours after miR-34a mimic transfection results in decreased BCL2 protein. NTC = non targeting control microRNA mimic 34A = miR-34a mimic. BCL2/Actin is the ratio of the integrated intensity (pixel volume) of the BCL2 band to the actin band. C. BCL2 siRNA and miR-34a mimic decrease BCL2 mRNA. Relative BCL2 expression is the expression of BCL2 normalized to the geometric mean of three housekeeping genes.