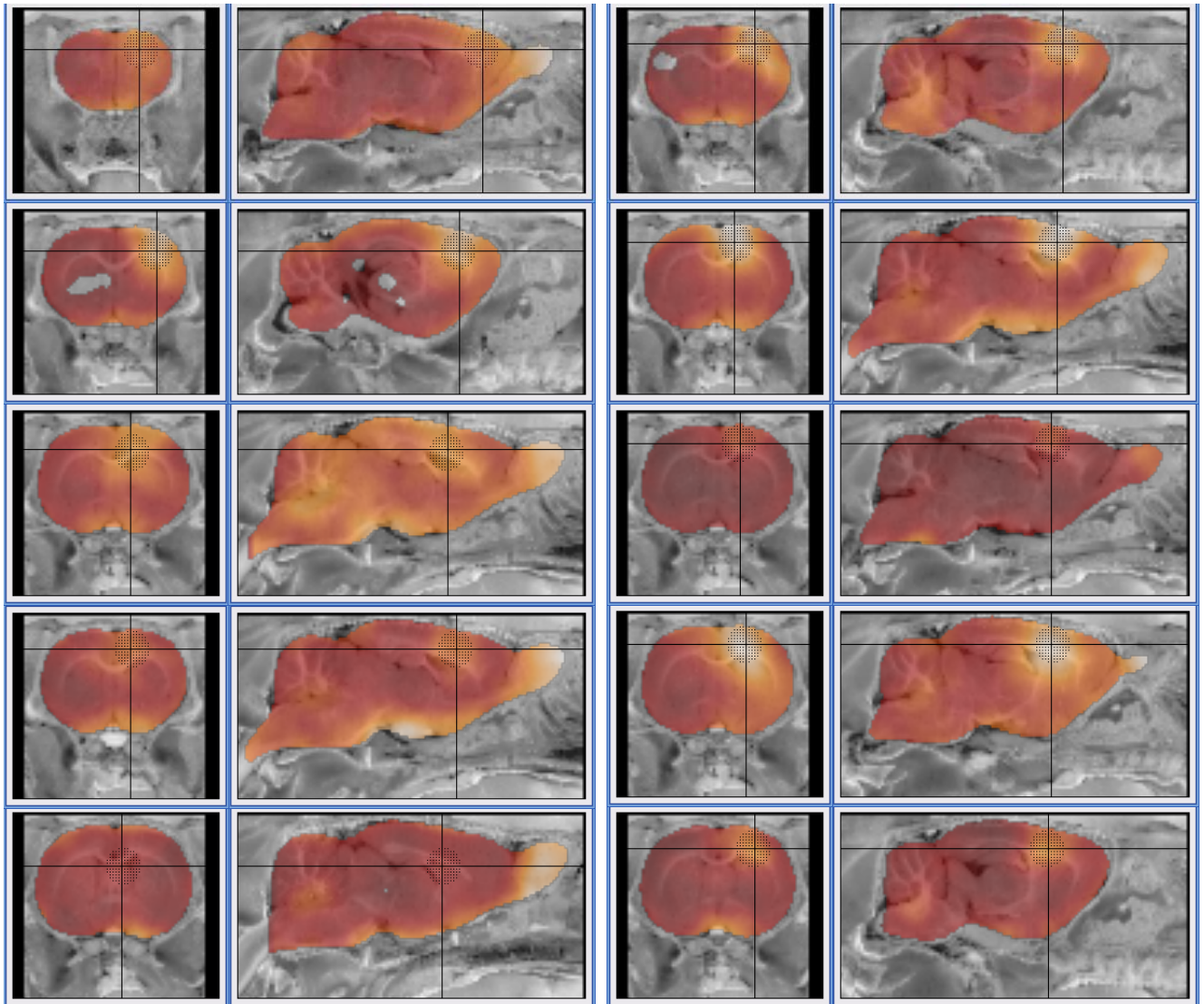
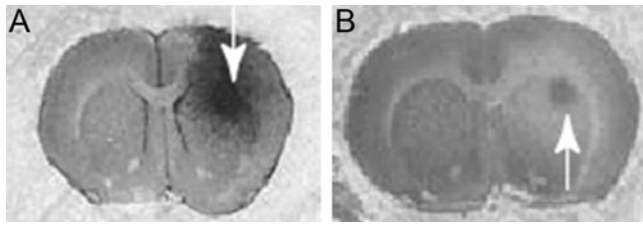


SUPPLEMENTAL FIGURE 1. Reference region ROI. A region was placed on the mean DVR image with respect to whole brain of the control subjects **(A)**. The ROI was drawn to avoid regions of high DVR indicated by red as well as the intended lesion location. Spheres were drawn bilaterally, flipped left-right, added, and thresholded to make a symmetric region. The reference region is shown as well on the cryosection atlas **(B)**. 0.25 mm thick coronal slices.



SUPPLEMENTAL FIGURE 2. Placement of lesion ROIs. Coronal and sagittal slices of DVR maps are shown for the zymosan treated subjects. In each image, a 16 μ L spherical ROI was placed manually such that the center was as close as possible to the maximum DVR in the lesion while keeping the entire ROI within the brain mask. Each image is shown on a different color scale, so the displayed intensities do not reflect the actual variance between subjects.



SUPPLEMENTAL FIGURE 3. Autoradiography blocking experiment. Brain slice from a zymosan treated rat incubated with 1 nM [^3H]-PK11195 (**A**) and a slice incubated with 1 nM [^3H]-PK11195 plus an excess of cold 10 μM PK11195 (**B**).