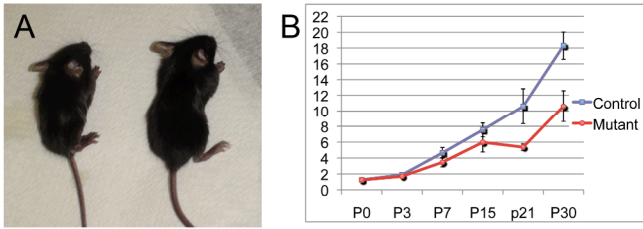
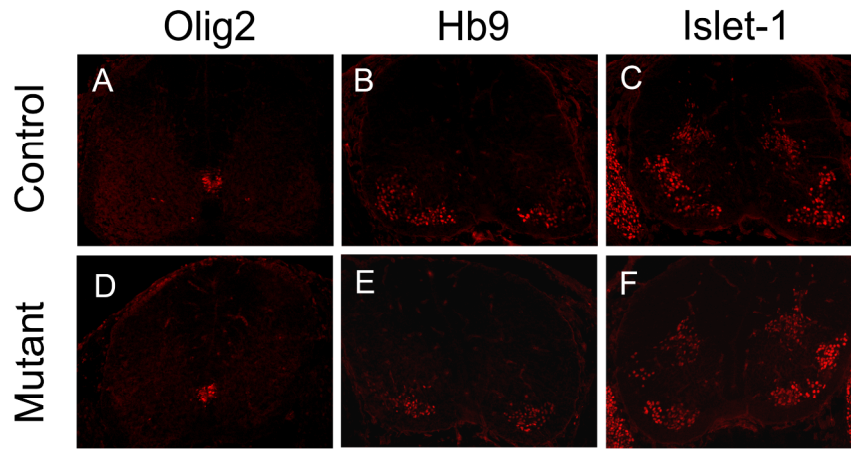


**Suppl. Figure 1.** RT-PCR with RNAs from P15 mouse brain and purified OPCs  
Upper panel, Shp2, 319bp. Lower panel, GAPDH.



**Suppl. Figure 2.** Growth of Shp2 mutant mice. (A) A P15 mutant pup (left) and its control littermate (right). (B) The growth chart of mutant and control mice at postnatal stages.



2094 E12.5 No.53-

**Suppl. Figure 3.** Normal development of the pMN progenitor cells and motor neurons in *Shp2* mutant spinal cord. Spinal cord sections from E12.5 control (A, C, E) and the mutant mice (B, D, F) were immunostained with anti-Olig2 (A, B), anti-Hb9 (C, D) and anti-Islet-1 (E, F).