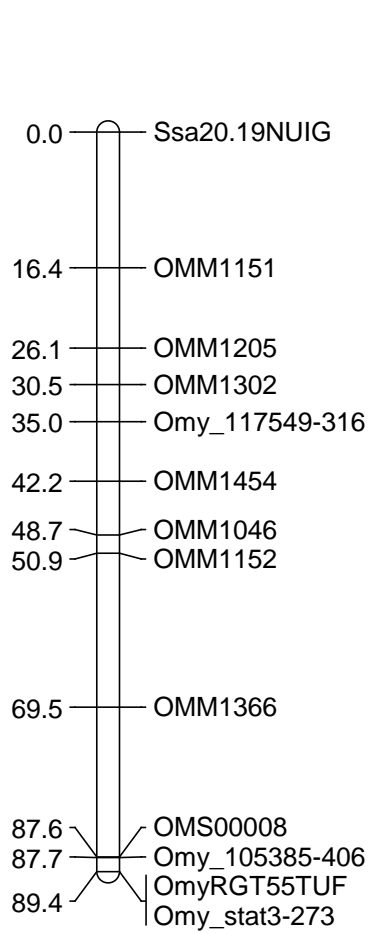


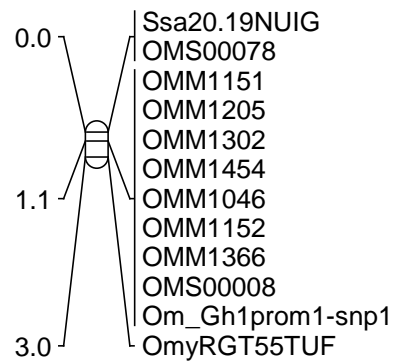
Additional file 3. Female-, male-, and sex-merged F_1 hybrid linkage maps in p to q orientation with rainbow trout chromosome designations (Omy) and linkage groups (RT) indicated in parentheses. Map distances (cM) represent the recombination fraction (theta) between loci.

RHYyb01 (Omy1, RT6)

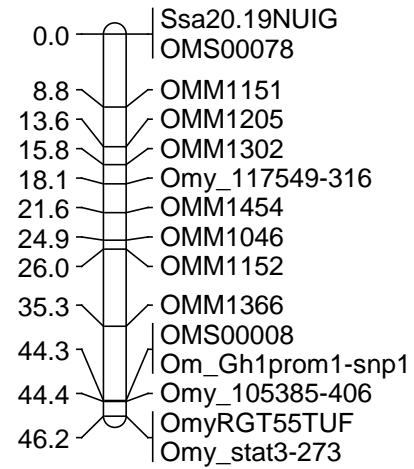
Female-merged



Male-merged

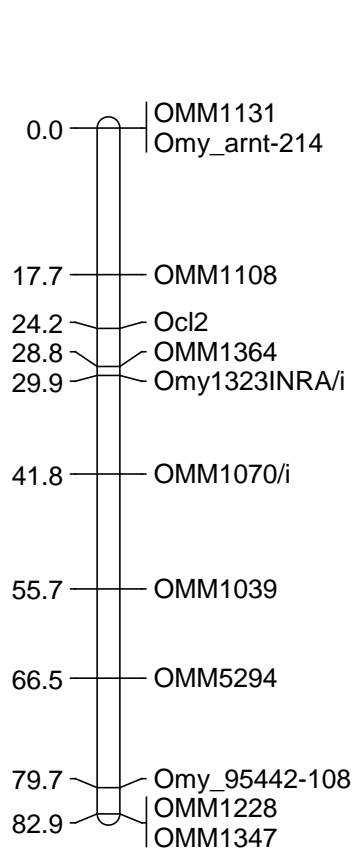


Sex-merged

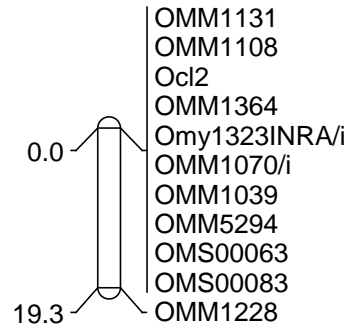


RYHyb02 (Omy2, RT27)

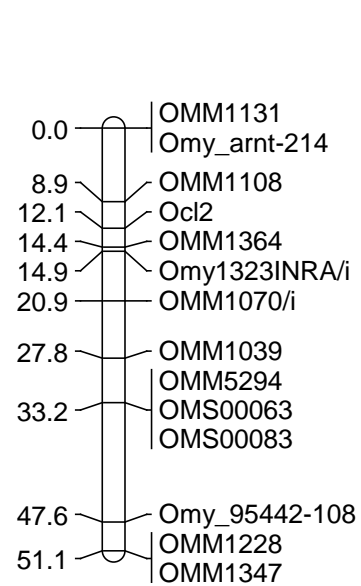
Female-merged



Male-merged

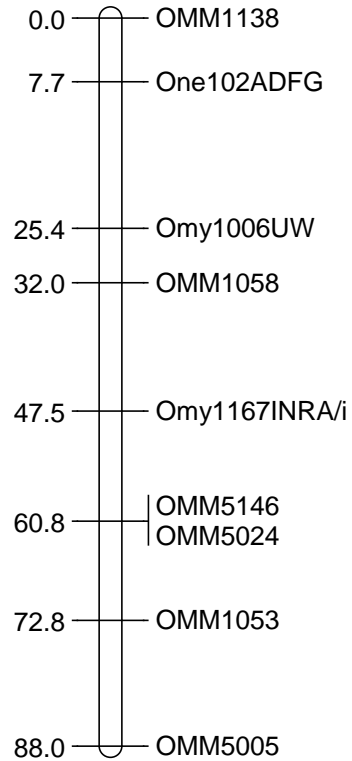


Sex-merged

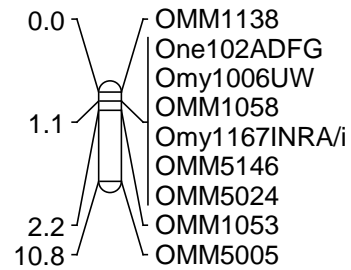


RYHyb03 (Omy3, RT31)

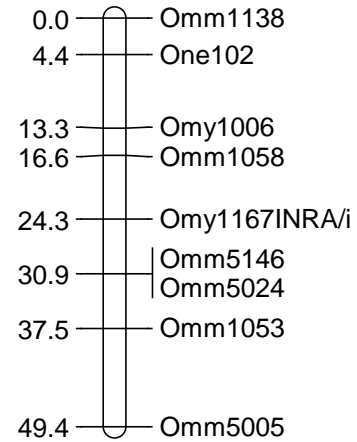
Female-merged



Male-merged

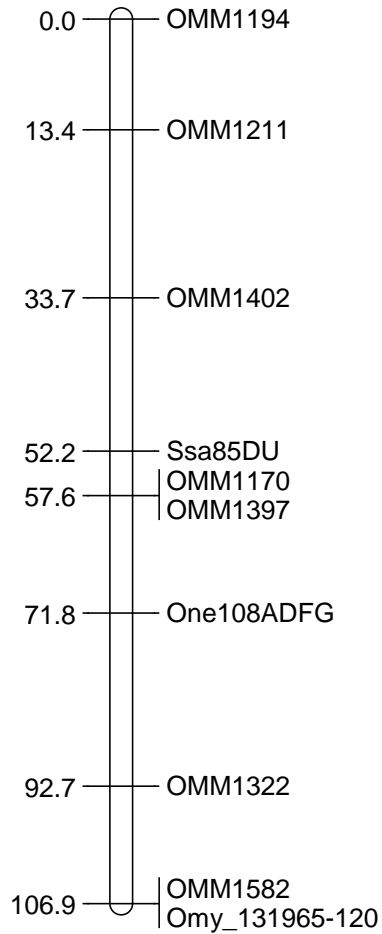


Sex-merged

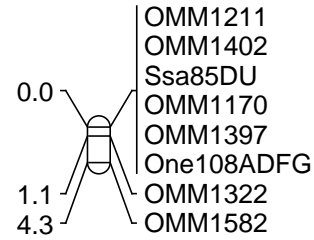


RYHyb04 (Omy4, RT24)

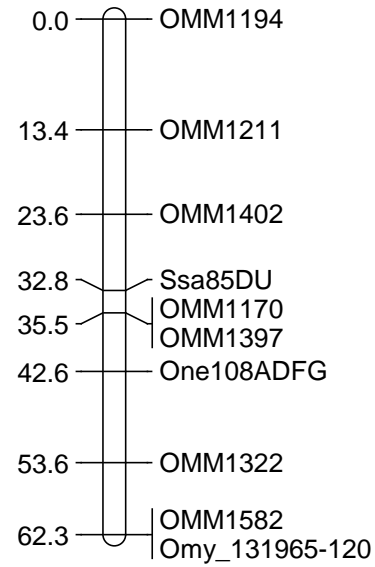
Female-merged



Male-merged

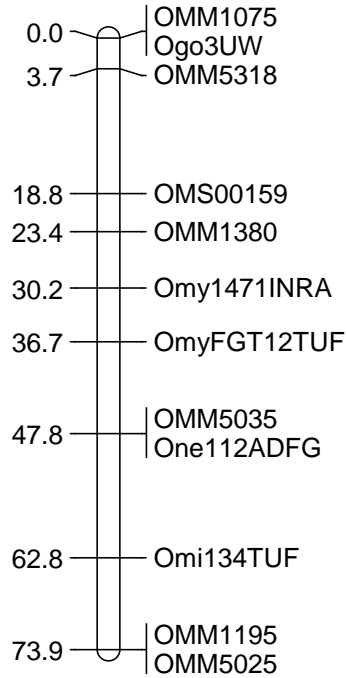


Sex-merged

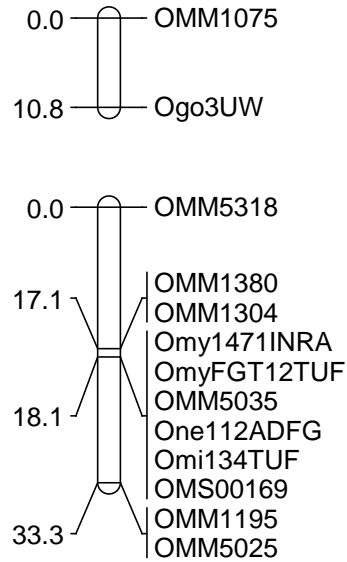


RYHyb05 (Omy5, RT8)

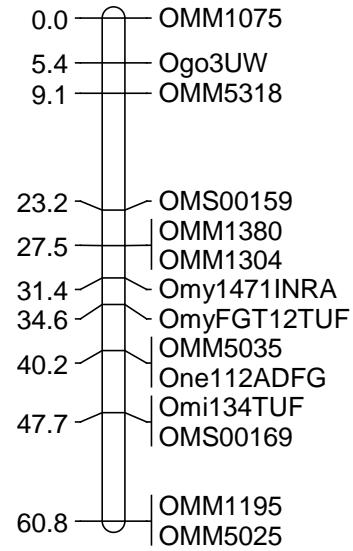
Female-merged



Male-merged

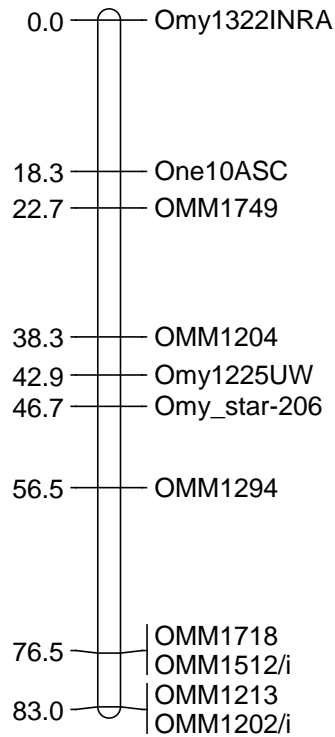


Sex-merged

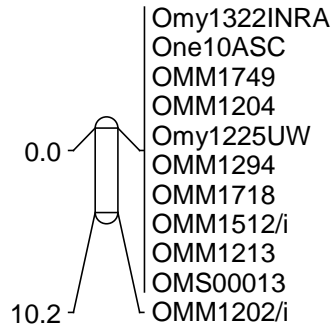


RYHyb06 (Omy6, RT10)

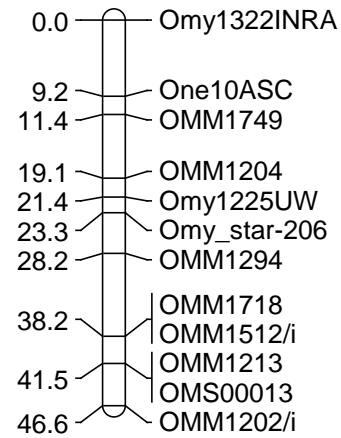
Female-merged



Male-merged

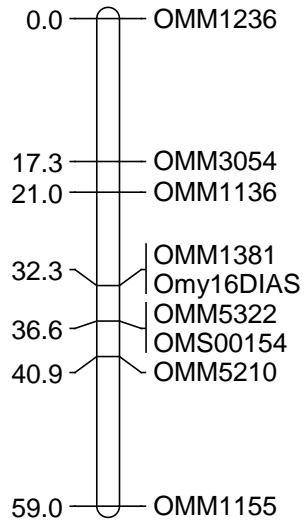


Sex-merged

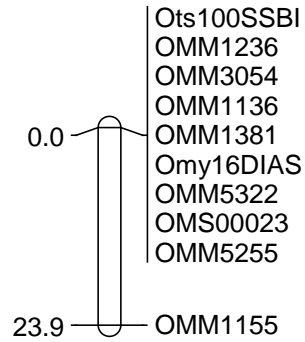


RYHyb07 (Omy7, RT12)

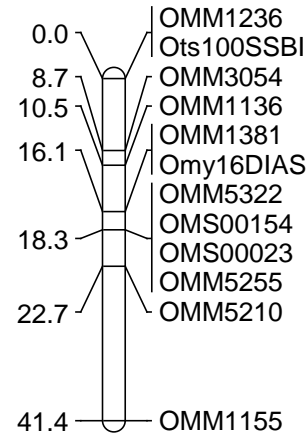
Female-merged



Male-merged

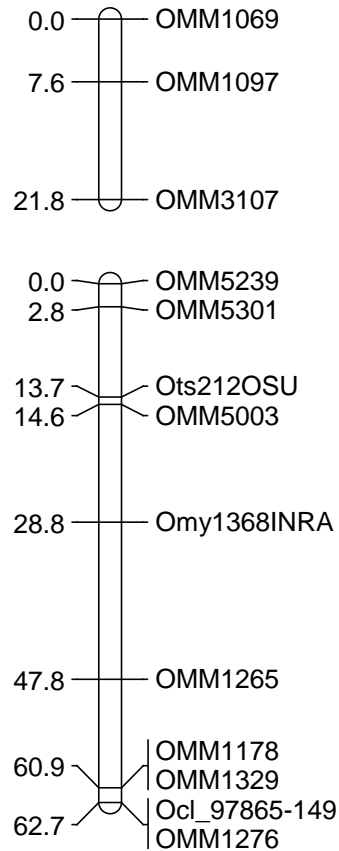


Sex-merged

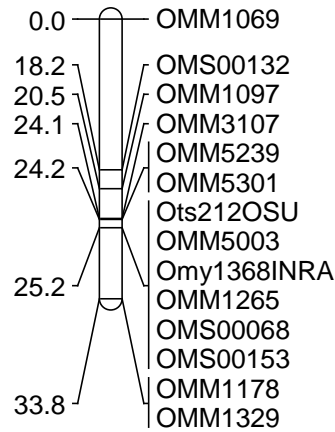


RYHyb08 (Omy8, RT23)

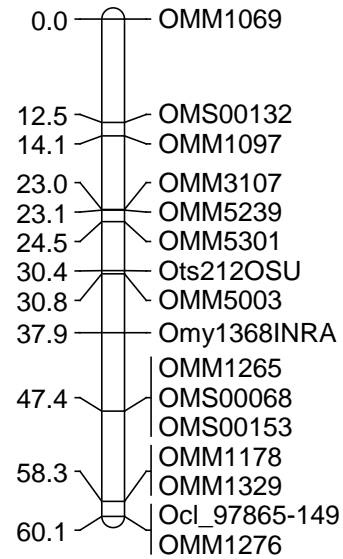
Female-merged



Male-merged

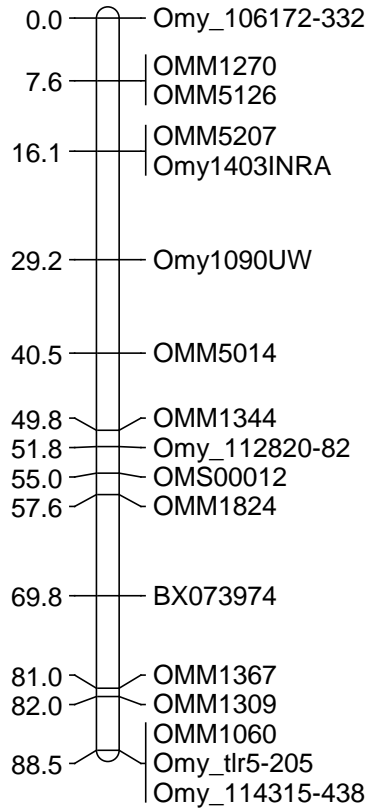


Sex-merged

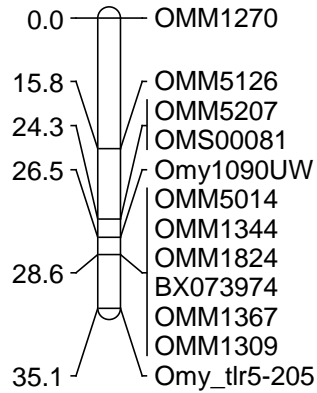


RYHyb09 (Omy9, RT21)

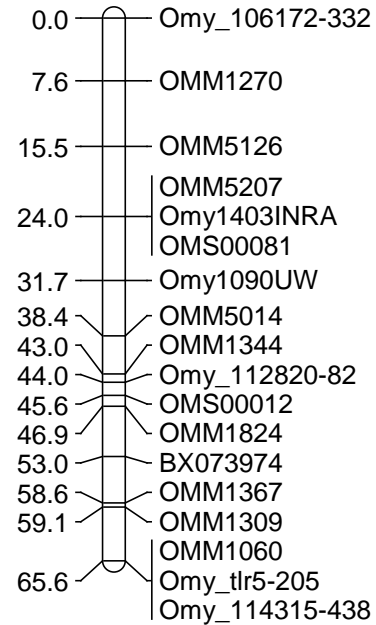
Female-merged



Male-merged

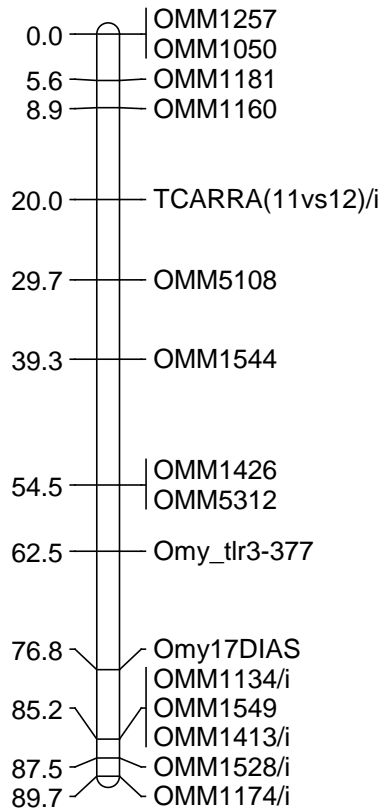


Sex-merged

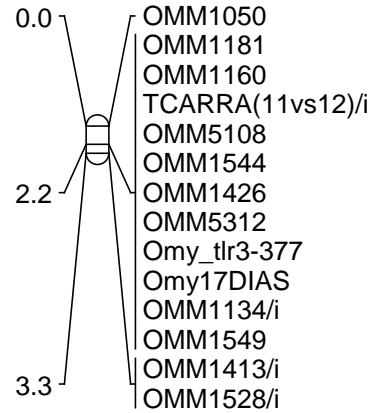


RYHyb10 (Omy10, RT20)

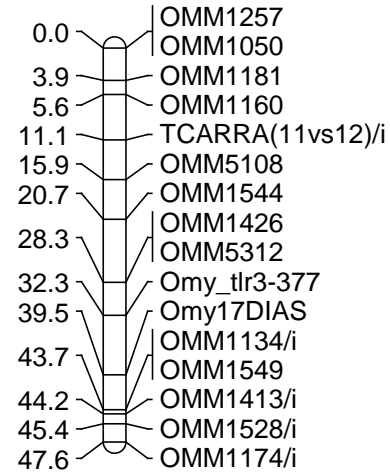
Female-merged



Male-merged

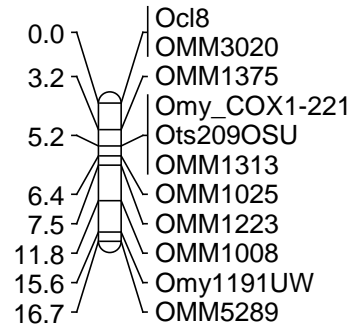


Sex-merged

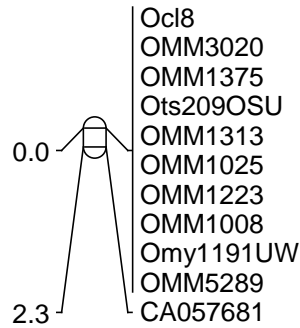


RYHyb11 (Omy11, RT19)

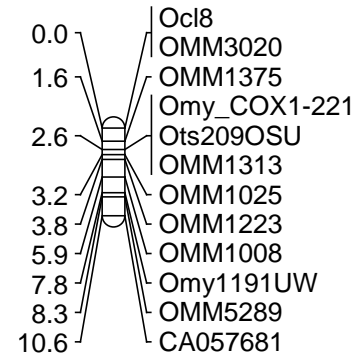
Female-merged



Male-merged

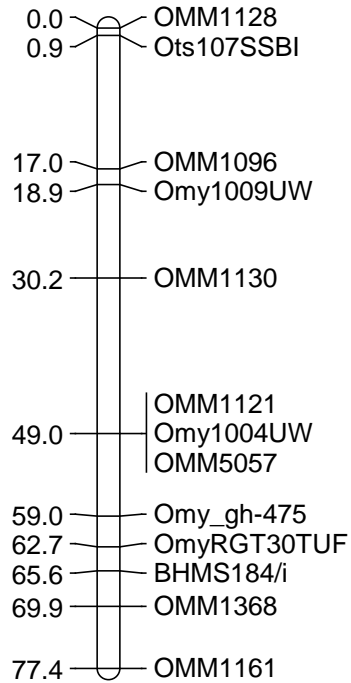


Sex-merged

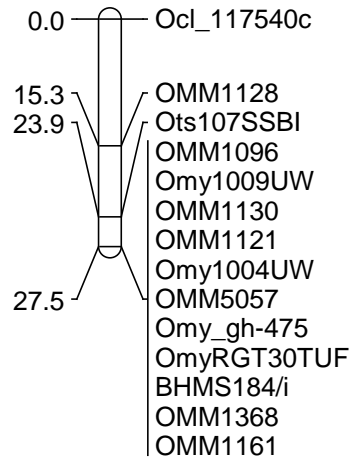


RYHyb12 (Omy12, RT9)

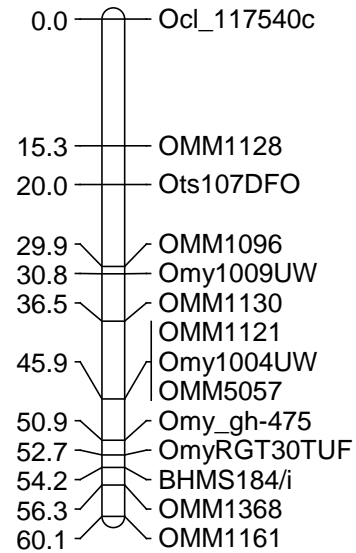
Female-merged



Male-merged

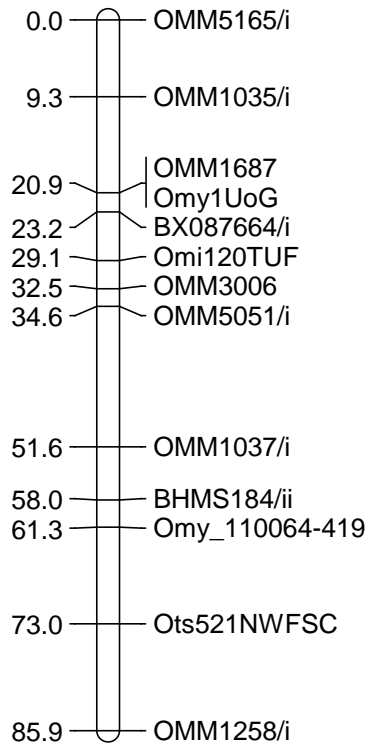


Sex-merged

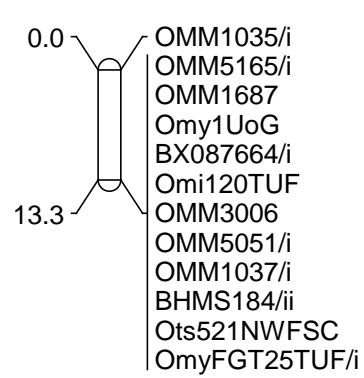


RYHyb13 (Omy13, RT2)

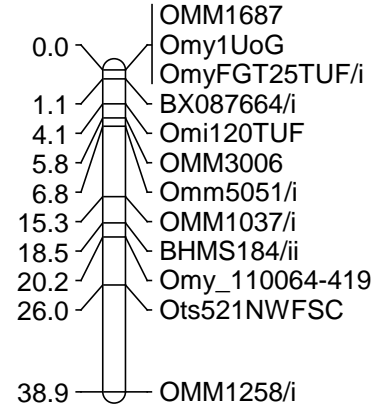
Female-merged



Male-merged

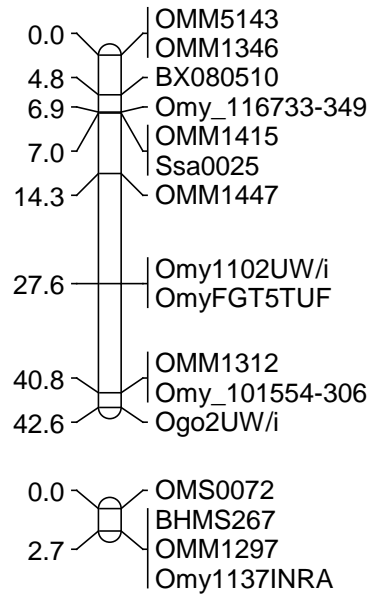


Sex-merged

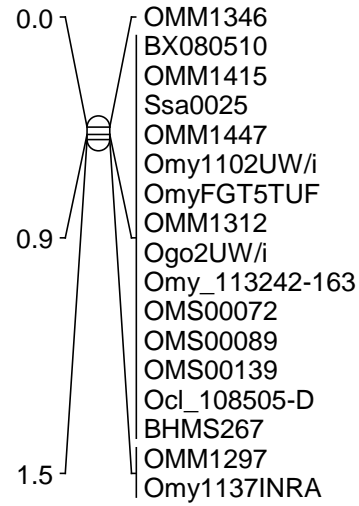


RYHyb14 (Omy14, RT3)

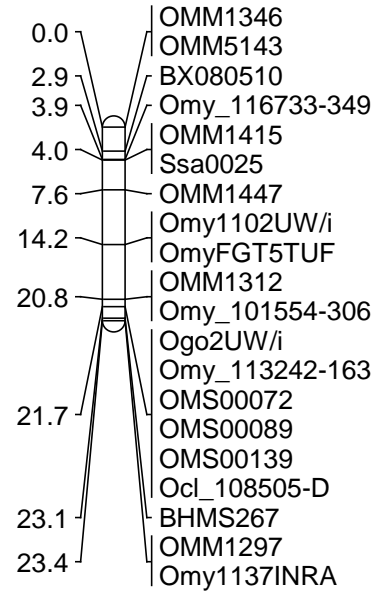
Female-merged



Male-merged

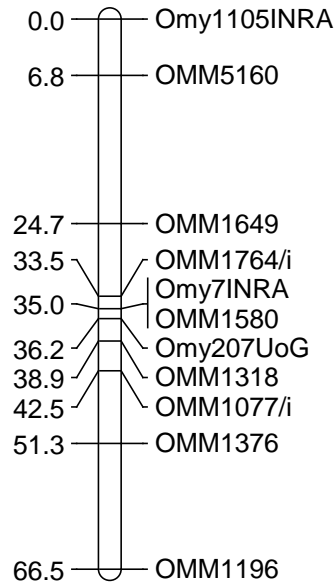


Sex-merged

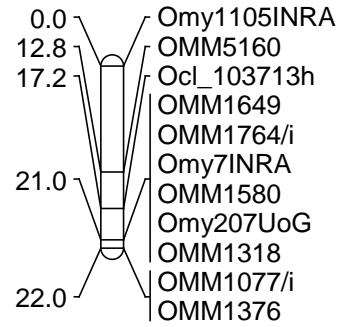


RYHyb15 (Omy15, RT7)

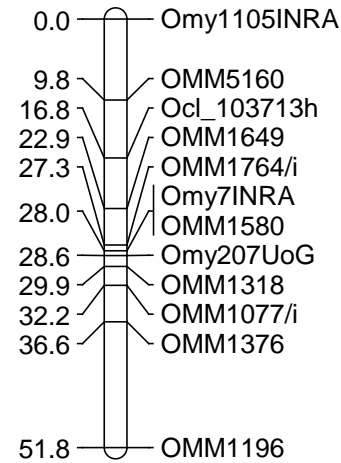
Female-merged



Male-merged

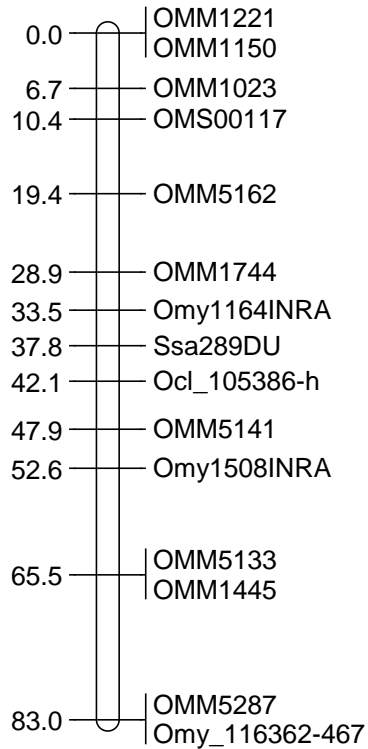


Sex-merged

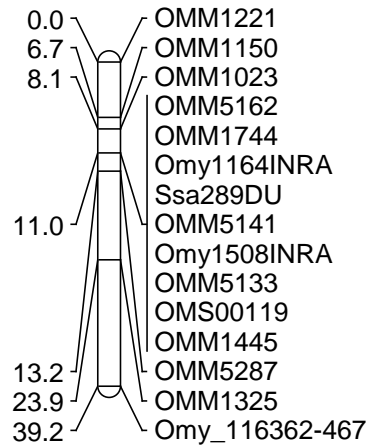


RYHyb16 (Omy16, RT22)

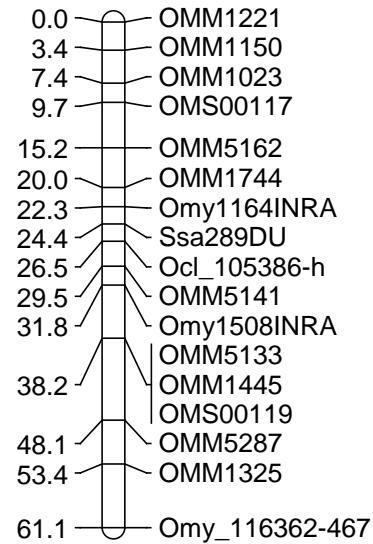
Female-merged



Male-merged

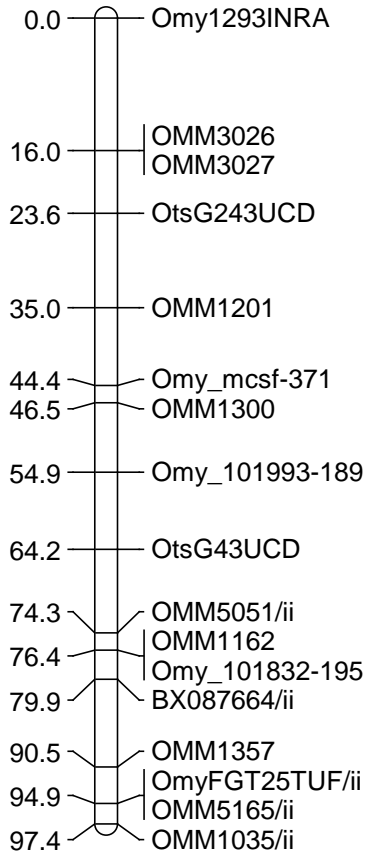


Sex-merged

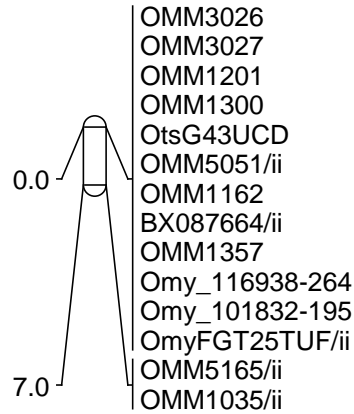


RYHyb17 (Omy17, RT29)

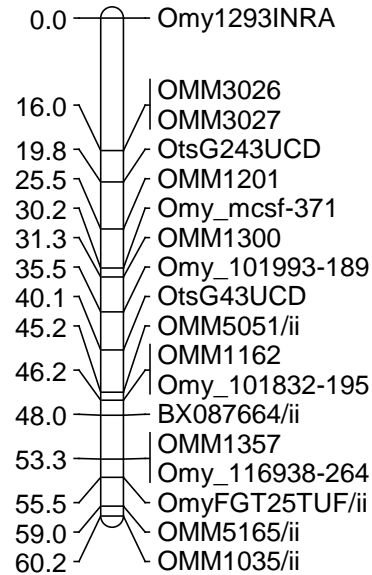
Female-merged



Male-merged

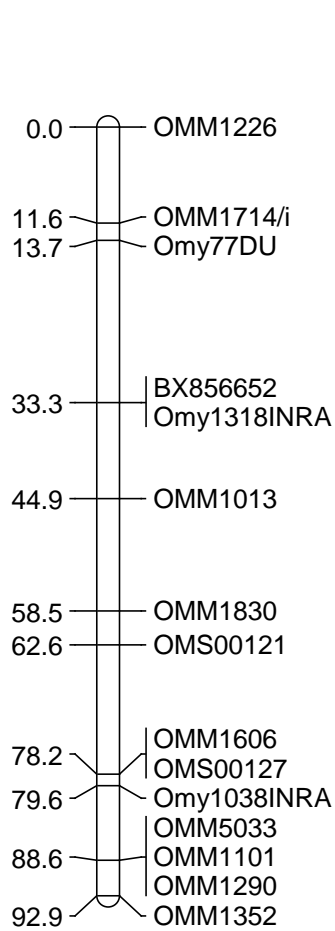


Sex-merged

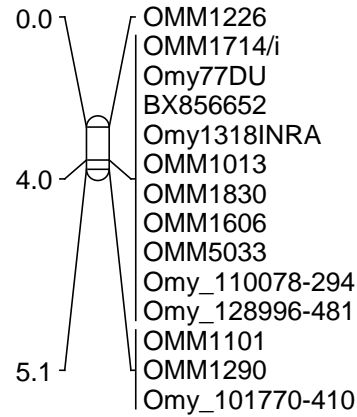


RYHyb18 (Omy18, RT16)

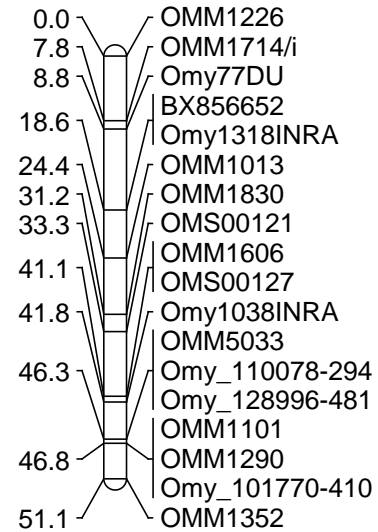
Female-merged



Male-merged

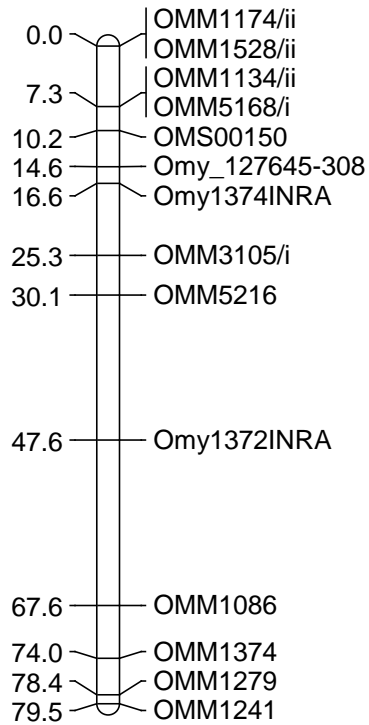


Sex-merged

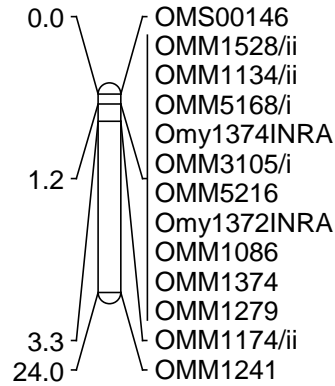


RYHyb19 (Omy19, RT14)

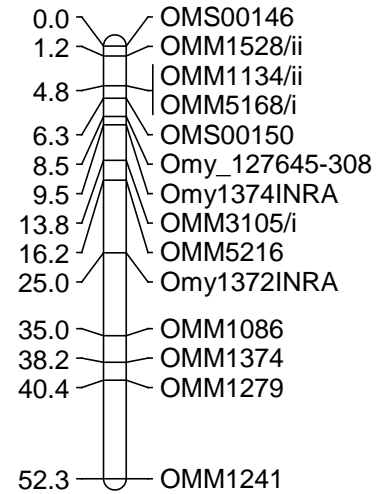
Female-merged



Male-merged

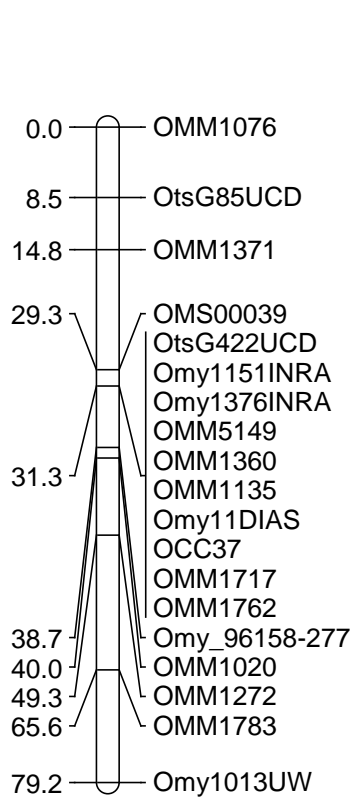


Sex-merged

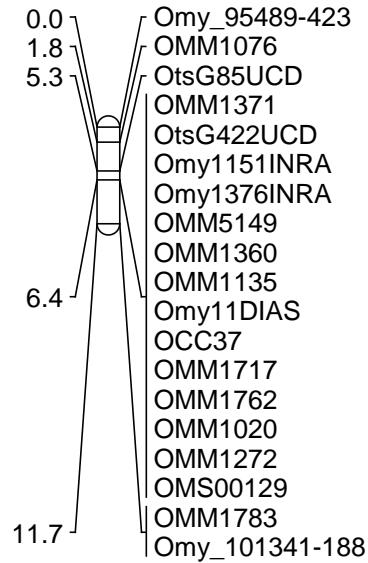


RYHyb20 (Omy28_Omy20, RT13_RT17)

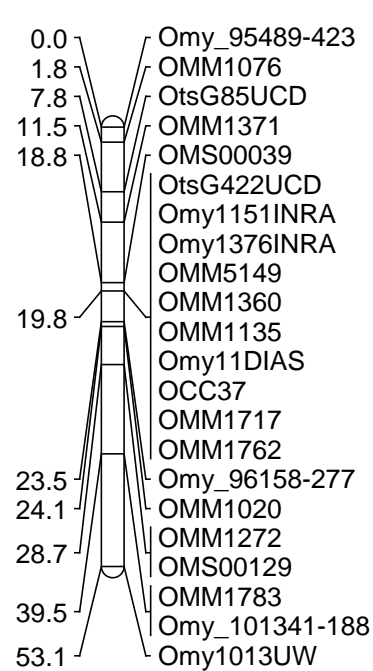
Female-merged



Male-merged

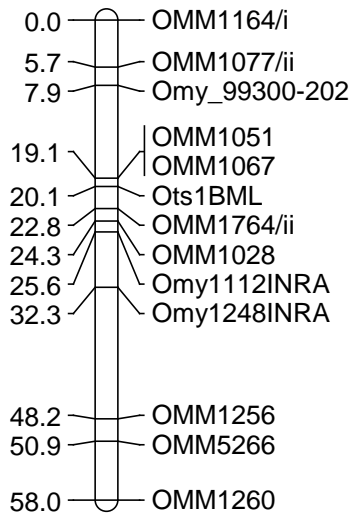


Sex-merged

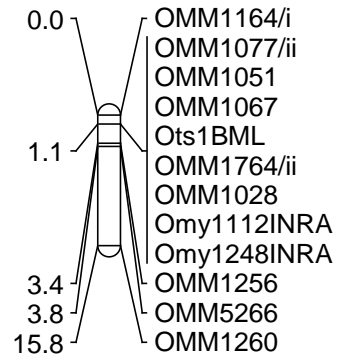


RYHyb21 (Omy21, RT15)

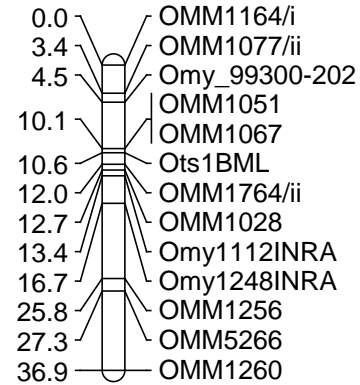
Female-merged



Male-merged

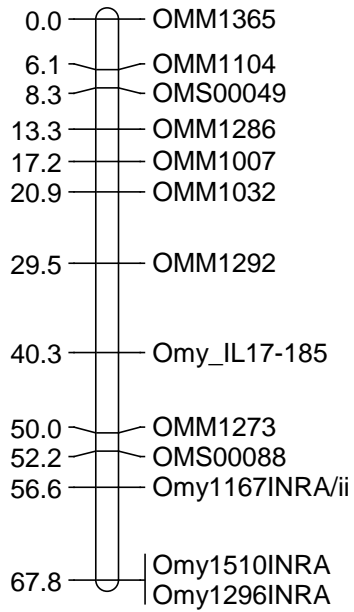


Sex-merged

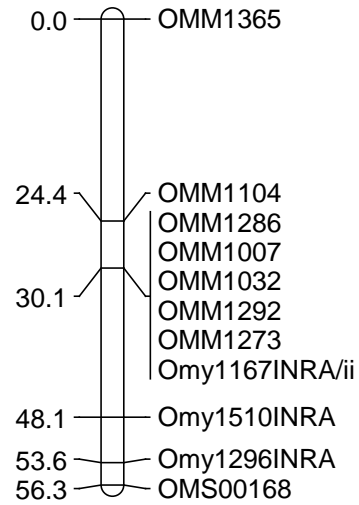


RYHyb22 (Omy22, RT5)

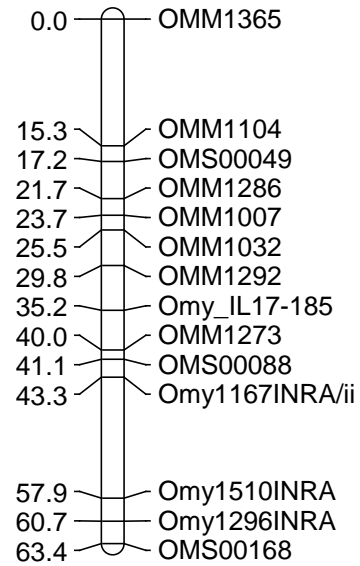
Female-merged



Male-merged

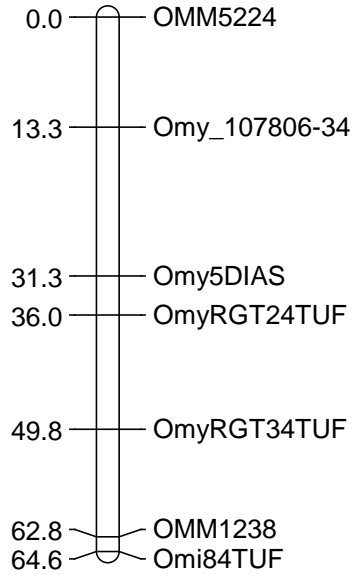


Sex-merged



RYHyb23 (Omy23, RT30)

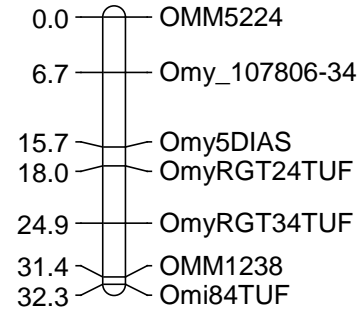
Female-merged



Male-merged

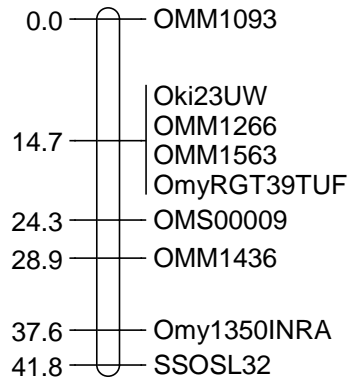


Sex-merged

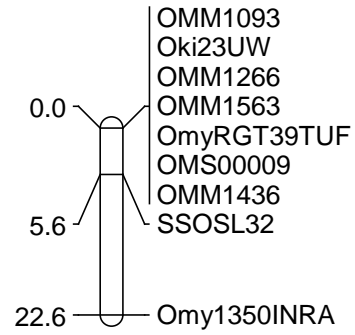


RYHyb24 (Omy24, RT26)

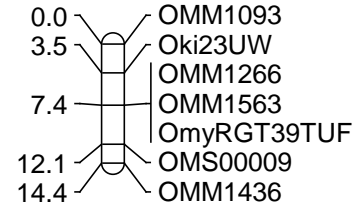
Female-merged



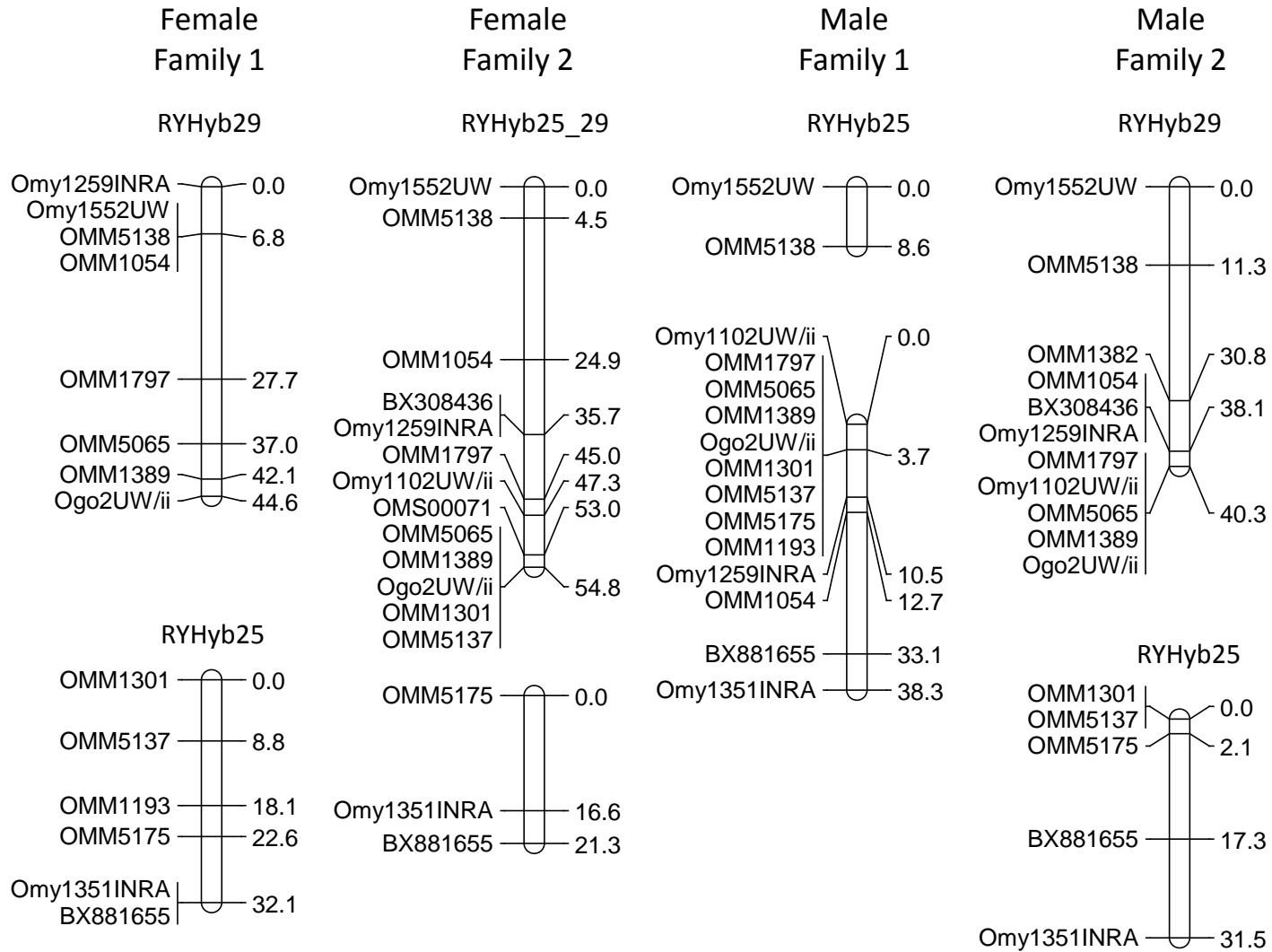
Male-merged



Sex-merged

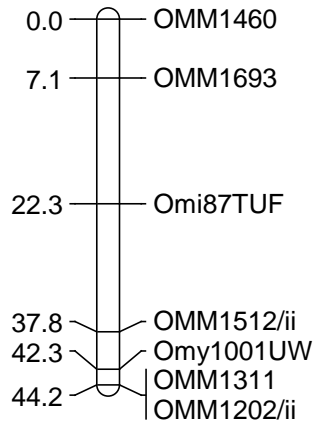


RYHyb25 (Omy25, RT4) and RYHyb29 (Omy29, RT25) polymorphism

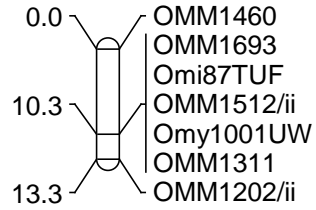


RYHyb26 (Omy26, RT18)

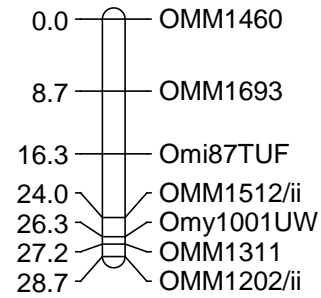
Female-merged



Male-merged

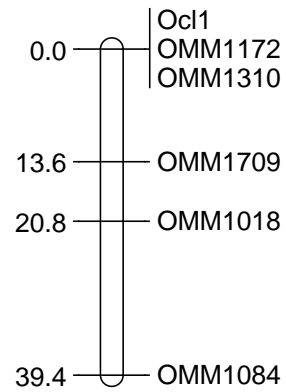


Sex-merged

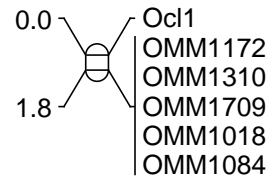


RYHyb27 (Omy27, RT11)

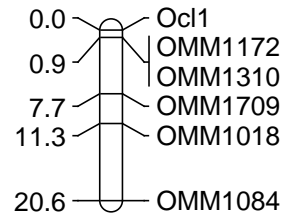
Female-merged



Male-merged

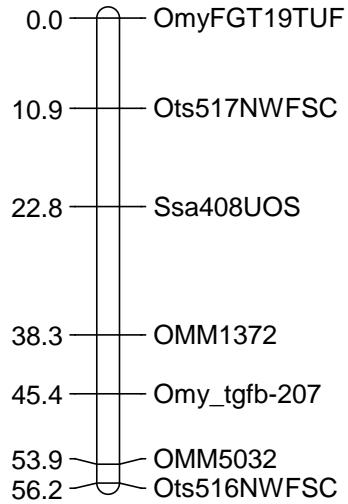


Sex-merged

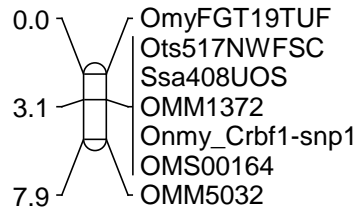


RYHyb29 (OmySex, RT1)

Female-merged



Male-merged



Sex-merged

