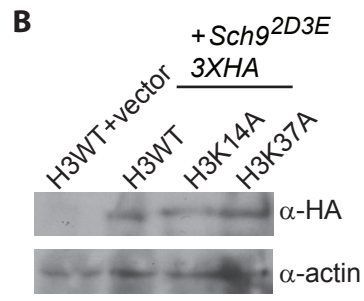
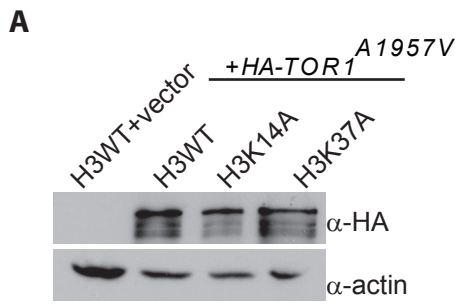


## **Additional Files**

**Additional File 1.** Immunoblot analysis of TORC1 pathway mutants. (A) H3WT, H3K14A and H3K37A strains transformed with control vector (H3WT) or vector expressing the Tor1 hyperactive mutant, Tor1<sup>A1957</sup> (A) or the Sch9<sup>2D3E</sup> mutant (B). Cells were grown to log phase in the appropriate selection media and whole-cell extracts were prepared. 30  $\mu$ g of extract was resolved by SDS-PAGE and immunoblotted with  $\alpha$ -HA antibody before stripping and reprobing with  $\alpha$ -actin as a loading control.



**Additional File 1.**