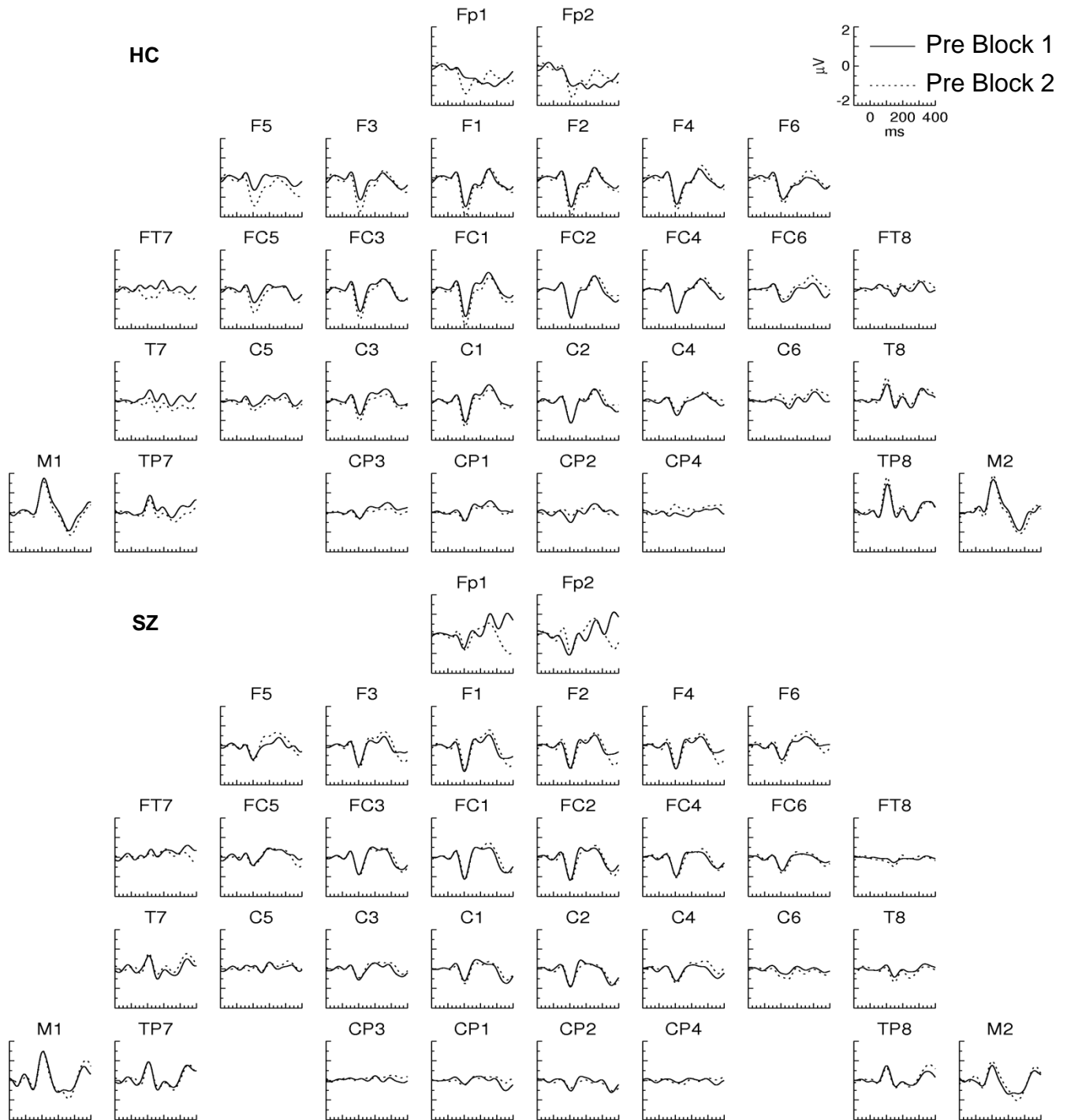
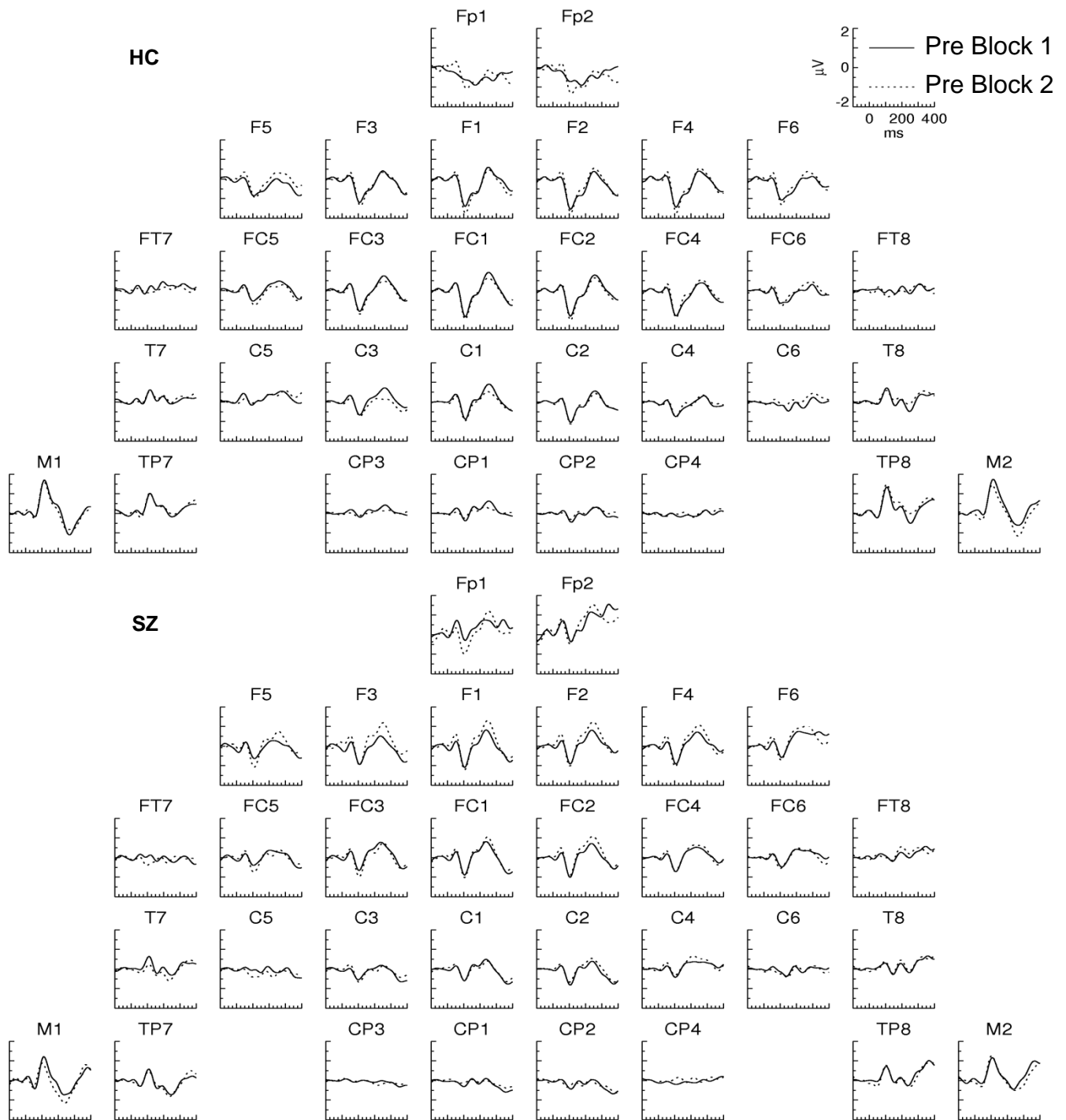


## Electrophysiological Assessment of Auditory Stimulus-Specific Plasticity in Schizophrenia

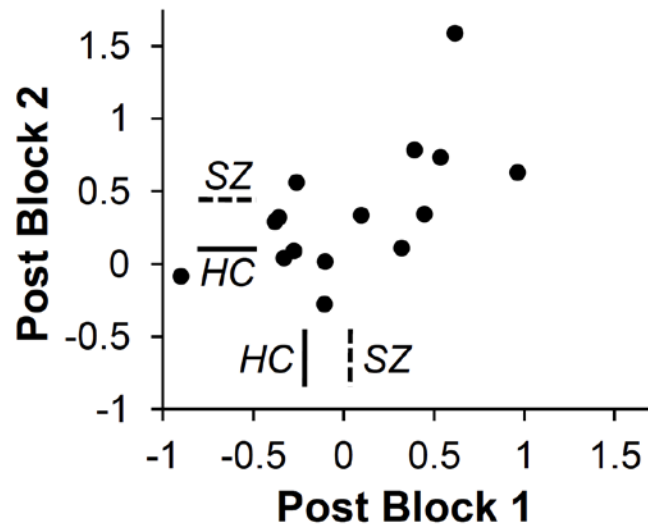
### Supplemental Information



**Figure S1.** Grand average event-related brain potentials evoked by the TS+ tones in Pre Blocks 1 and 2 for healthy controls (HC) and schizophrenia patients (SZ). TS+, tetanized stimuli.



**Figure S2.** Grand average ERPs evoked by the TS- tones in Pre Blocks 1 and 2 for HC and SZ. TS-, untetanzed stimuli; other abbreviations as in Figure S1.



**Figure S3.** Scatterplot illustrating the correlation in the SZ group between the Post Block 1 and 2 right temporal plasticity effects. The effect means for HC (solid lines) and SZ (dotted lines) are plotted for comparison. The HC and SZ Post Block 1 mean values are indicated with vertical bars, and the Post Block 2 mean values are indicated with horizontal bars. Abbreviations as in Figure S1.