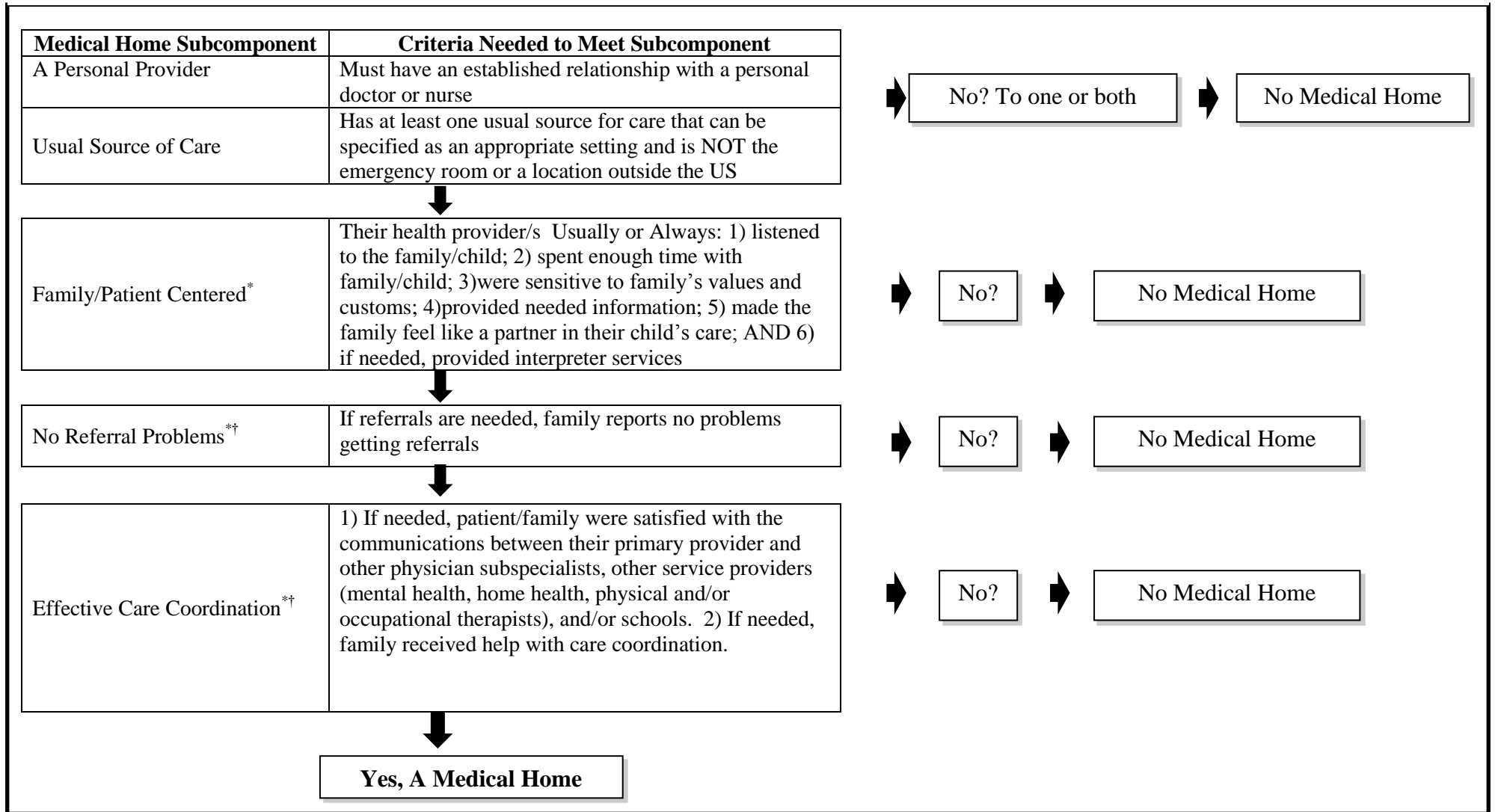


Appendix A. The Subcomponent Criteria and Algorithm of the Medical Home Composite Measure (Based on National Survey for Children’s Health 2007/2008)



Source: Adapted from Aysola et.al., 2011 *Health Affairs*

*Based upon responses to survey questions asking family/patient to describe their experience over the last 12 months

†Those children that did not require a referral or did not have two types of services requiring care coordination and communications between providers, were characterized as legitimate skips and met the criteria for the subcomponent