

### **Supplemental Figure Legends:**

Supplemental Figure 1. Scheme of conditional p65 expression. A. A full-length cDNA encoding p65 was ligated behind a loxp-GFP-STOP-loxp fragment and cloned into the pCAGGS vector containing a CMV promoter and a chicken beta actin intron. B. Transgenic GFP expression (Green) in pups was visualized under a UV lamp. C. Pancreatic acini isolated from the transgenic mice were visualized under fluorescent microscope.

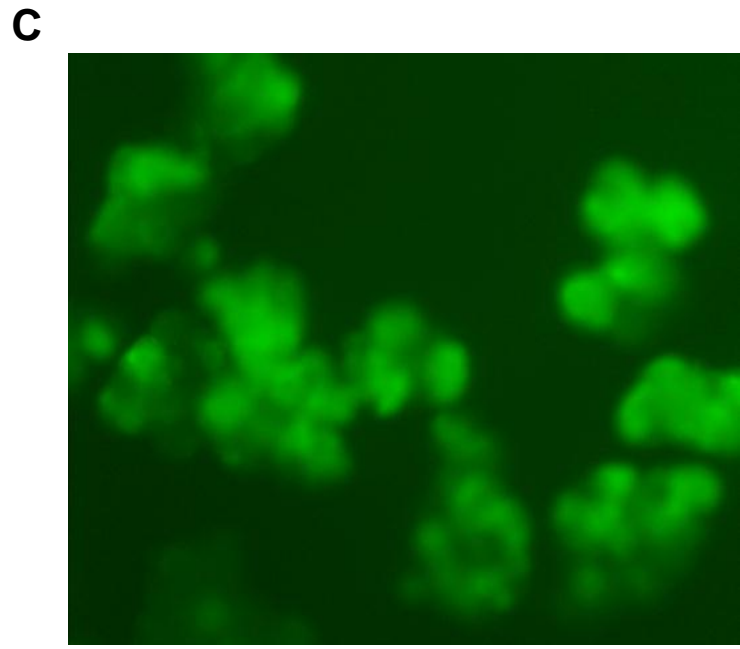
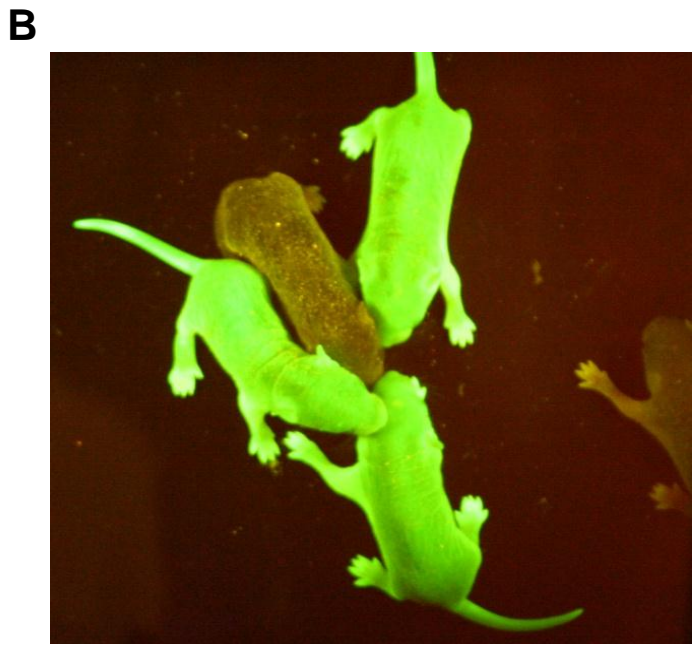
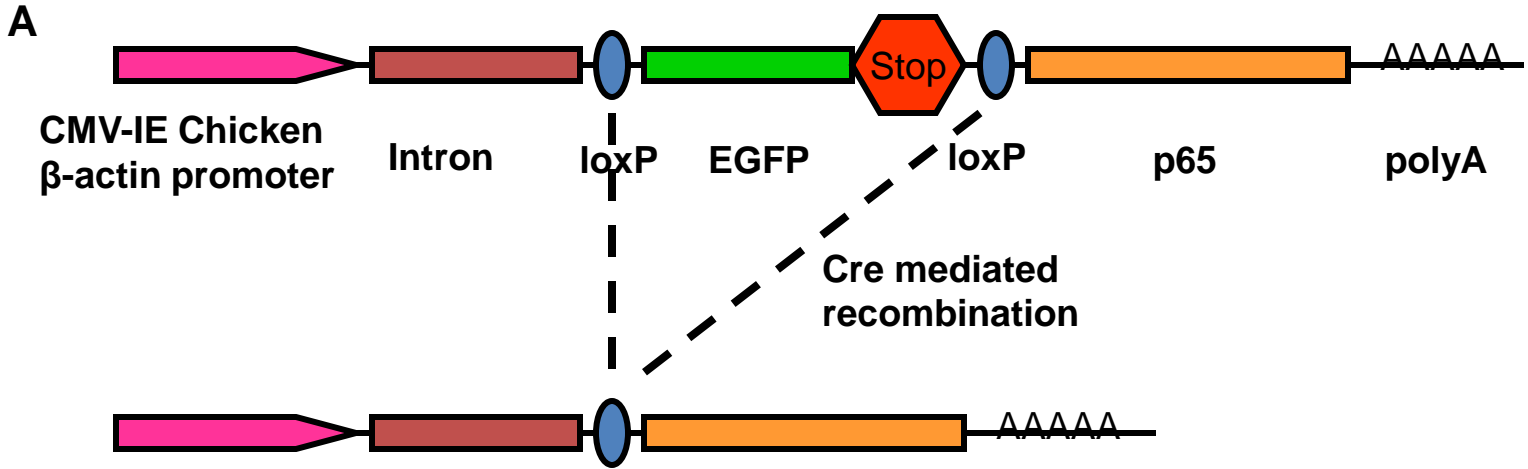
Supplemental Figure 2. Caerulein treatment increased NF- $\kappa$ B DNA binding activity. Densitometry of NF- $\kappa$ B bands from Figure 2 was measured using ImageJ software (<http://rsbweb.nih.gov/ij/>).

Supplemental Figure 3. Caerulein administration induced more CD45 positive inflammatory cell infiltration in mice with high basal pancreatic p65 expression. Quantitative measurement of CD45 positive cells in the pancreata revealed higher inflammatory cell infiltration in Ela-CreERT x LSL-p65 mice (p65+Caerulein). (\*p<0.05 vs control, #p<0.05 vs control+caerulein)

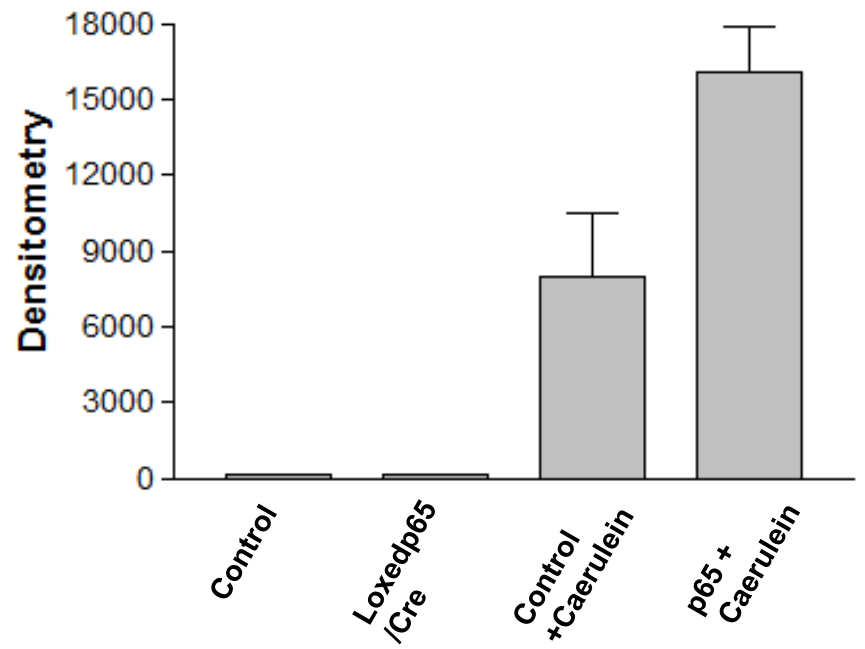
Supplemental Figure 4. HA-tagged constitutively active IKK2 was expressed upon Cre recombination. By western blot using antibody against HA-tag, HA-IKK2 expression was detected in the pancreata of Ela-CreERT x LSL-IKK2 (LSL-IKK2/Cre) mice 7 days after TM induction.

Supplemental Figure 5. A negative control in p65 immunohistochemistry staining showed no background staining. The slide was immune-stained in the absence of p65 primary antibody and counter-stained with haematoxylin (blue).

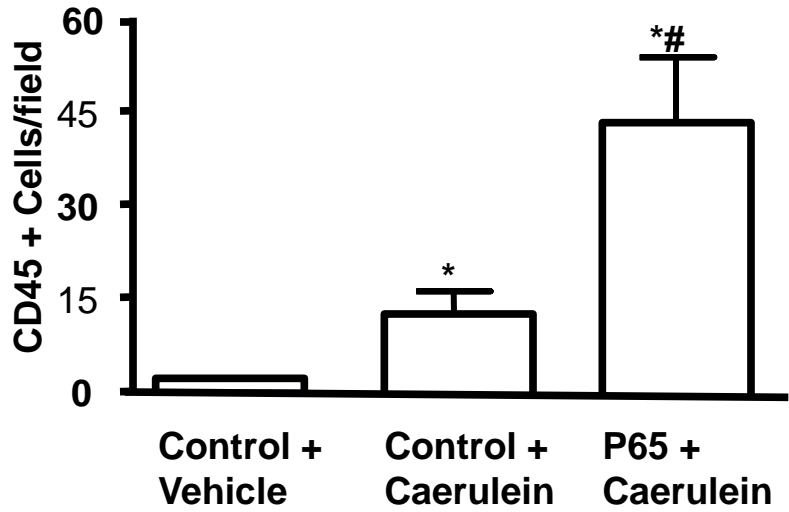
# Supplemental Figure 1



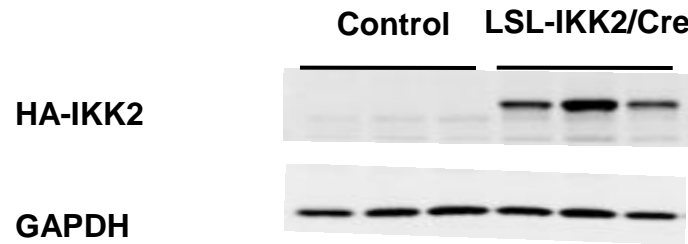
# Supplemental Figure 2



# Supplemental Figure 3

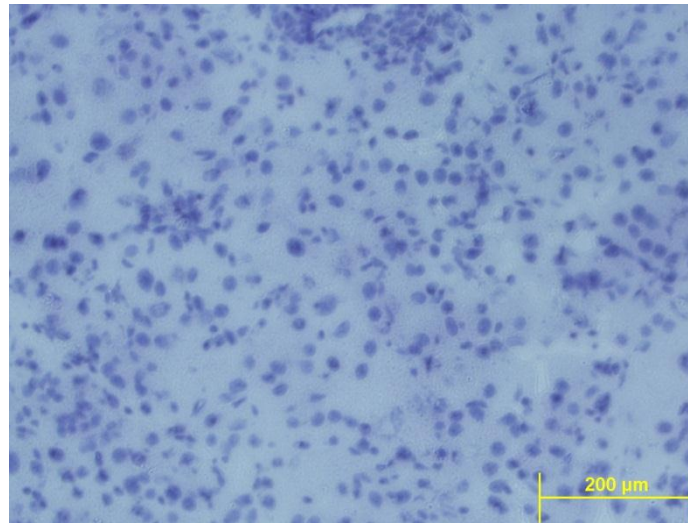


# Supplemental Figure 4



## Supplemental Figure 5

IHC staining without p65 primary antibody



# Supplemental Table 1

Scores for estimation of the degree of pancreatic injury.

| Score              | 1                            | 2                       | 3                         | 4                                | 5                          |
|--------------------|------------------------------|-------------------------|---------------------------|----------------------------------|----------------------------|
| Edema              | Local inter lobular swelling | Global lobular swelling | Swelling of acinar spaces | Swelling of intercellular spaces | Island-like acini or cells |
| Inflammatory Cells | <5                           | 5-10                    | 10-20                     | 20-30                            | >30                        |
| Necrosis           | <2%                          | 2%-5%                   | 5%-10%                    | 10%-20%                          | >20%                       |

Inflammatory cells were counted as the average number of cells per 10 fields at 400× magnification. The degree of parenchyma necrosis was evaluated as percent area of acinar cell necrosis.