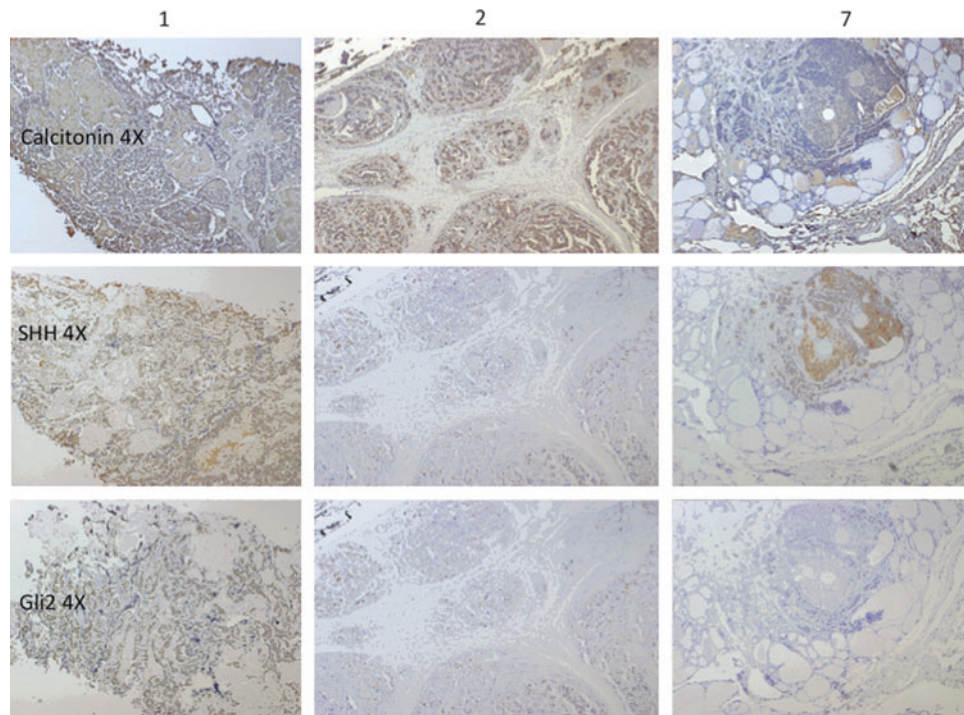


Supplementary Data



SUPPLEMENTARY FIG. S1. Three representative MTC tumors stained for calcitonin, Shh, and Gli2 show intratumor and intertumor heterogeneity of staining by IHC. All seven tumors had malignant cells that stained for Shh and Gli2, but there were significant differences in staining intensity across specimens. Tumors 1 and 2, for example, had strong staining throughout the tumor for Shh and Gli2, while tumor 7 had intense staining for Shh but almost no staining for Gli2. Magnification 4 \times .