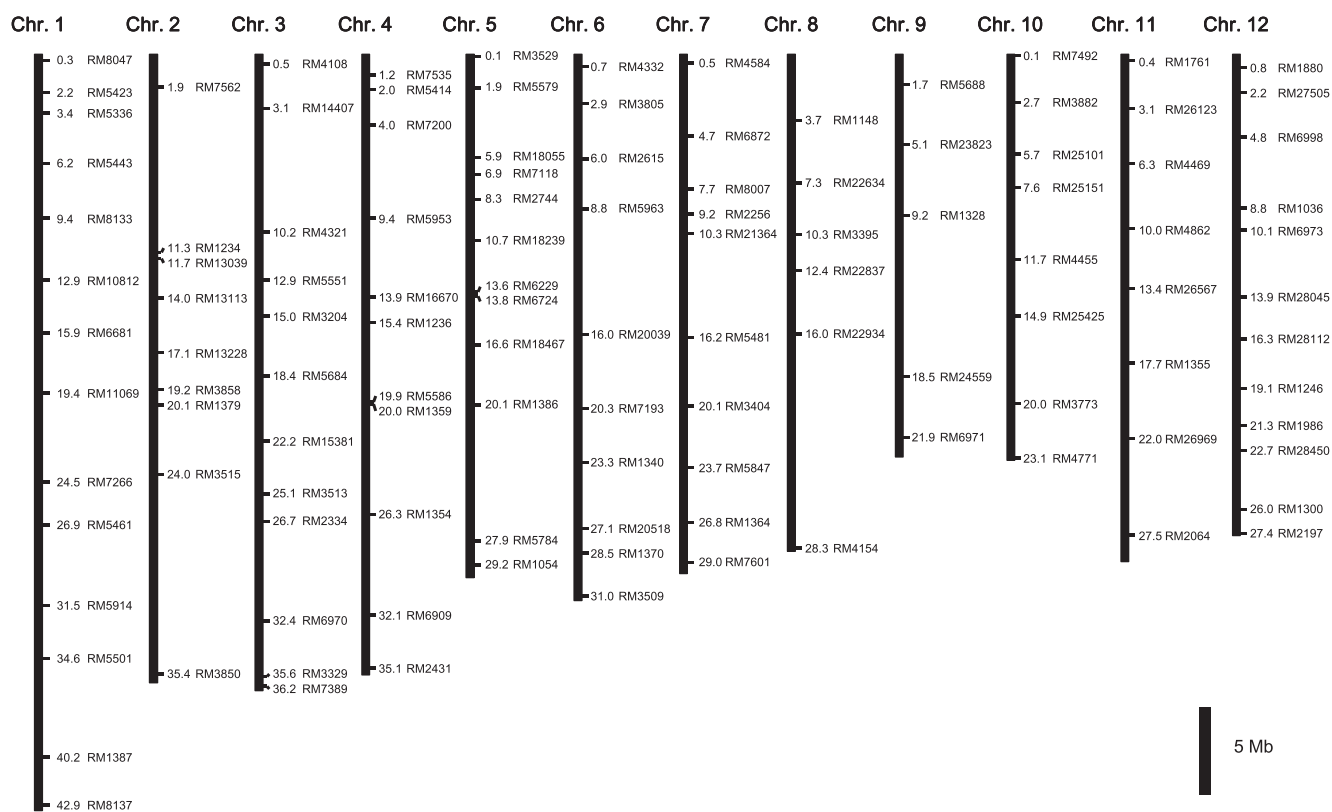
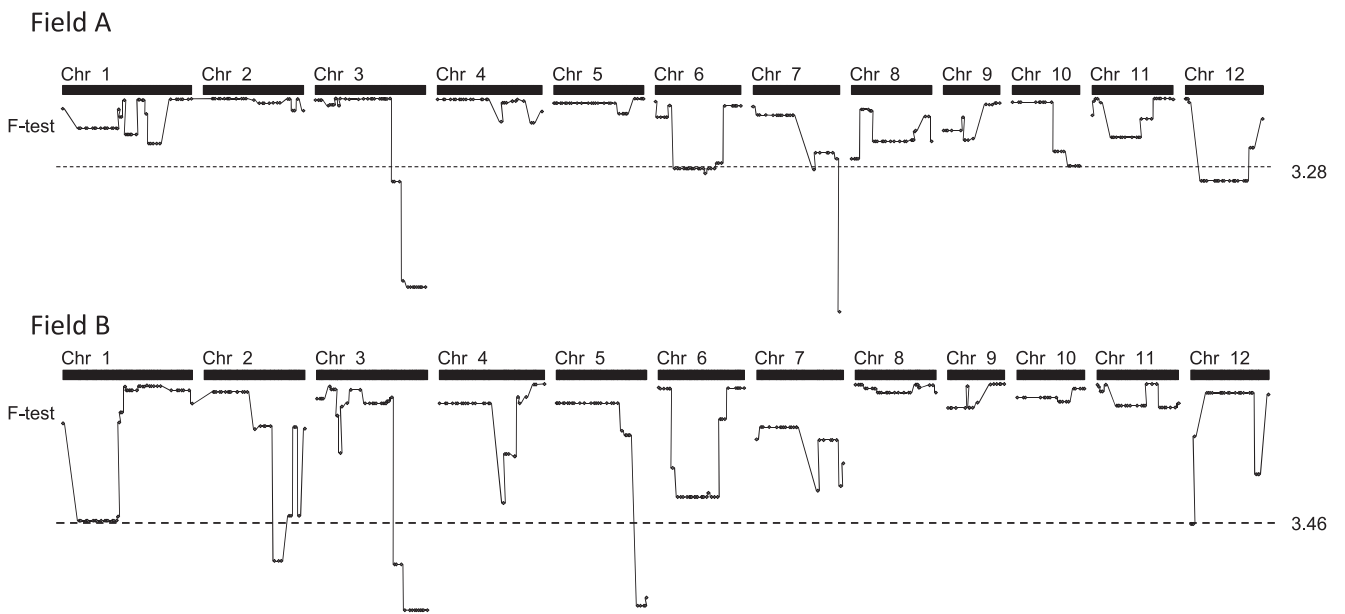


Supplemental Fig. 1. Scheme for developing CSSLs carrying LAC23 chromosome segments against the Koshihikari genetic background. Boxes indicate the type of MAS done in that generation. Numbers to the right of each box indicate the number of individuals selected to carry forward, out of the total number of individuals tested at that step.



Supplemental Fig. 2. Physical map of the 117 SSR markers used for marker-assisted selection in the LAC23 × Koshihikari CSSLs.



Supplemental Fig.3. QTL analysis by ANOVA for grain Cd contents in CSSLs grown in fields A and B. Dashed lines indicate the threshold *F*-test values.