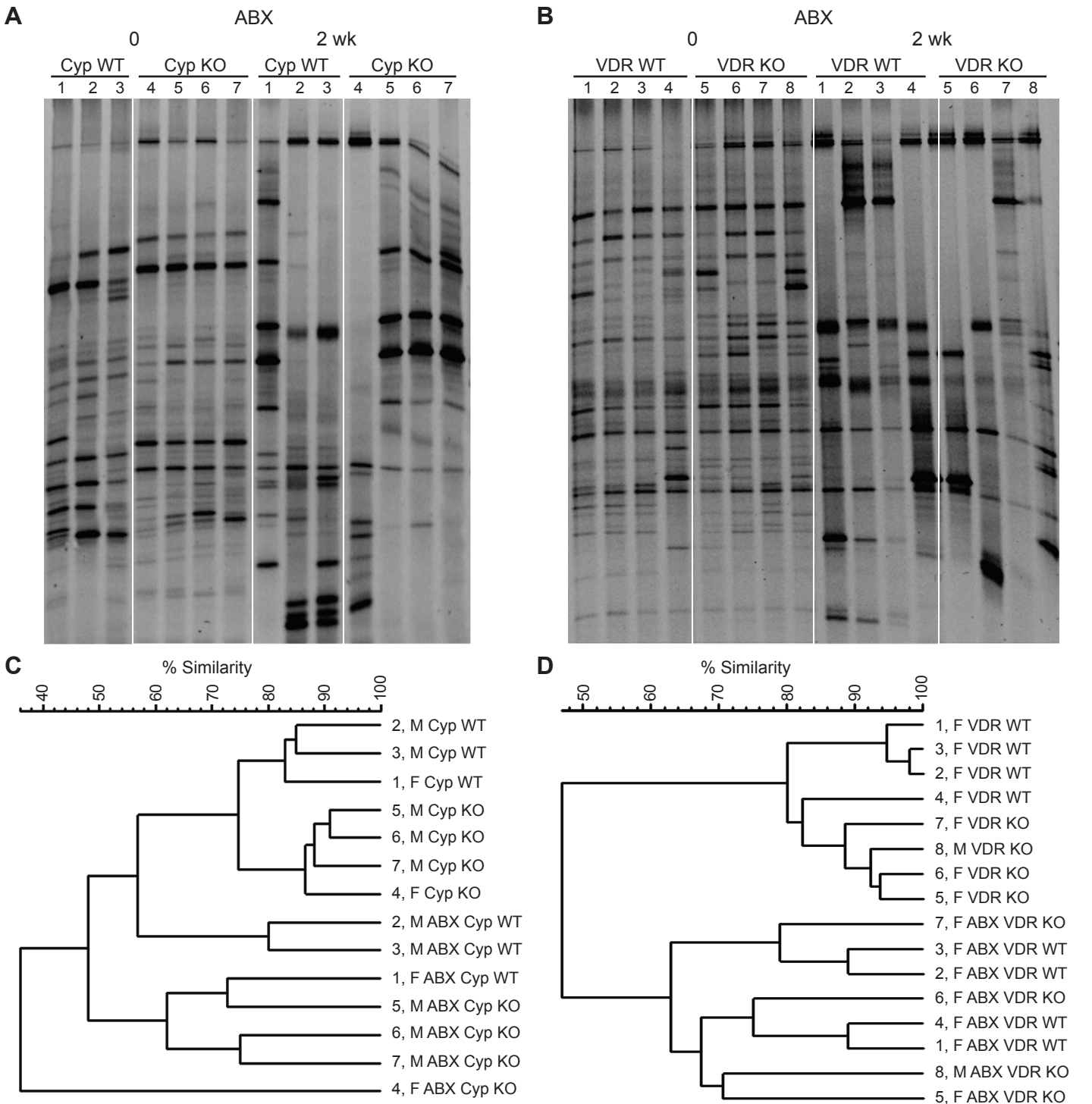


Online Supporting Material



Supplemental Figure 1. The DGGE banding patterns of bacterial DNA collected from the feces of Cyp WT, Cyp KO, VDR WT and VDR KO mice treated or not with ABX. DGGE fingerprints of (A) Cyp WT and Cyp KO littermates and (B) VDR WT and VDR KO littermates before and after ABX treatment. Numbers reflect individual mice before and after ABX treatment. Percentage of similarity in DGGE banding patterns of (C) Cyp WT and Cyp KO littermates and (D) VDR WT and VDR KO littermates before and after ABX treatment. Data shown is one representative experiment of three independent experiments. ABX: antibiotics, ABX Cyp KO: antibiotic treated Cyp KO, ABX Cyp WT: antibiotic treated Cyp WT, ABX VDR KO: antibiotic treated VDR KO, ABX VDR WT: antibiotic treated VDR WT, DGGE: denaturing gradient gel electrophoresis, Cyp: *Cyp27b1*, F: females, M: males, KO: knockout, VDR: vitamin D receptor, WT: wild-type.