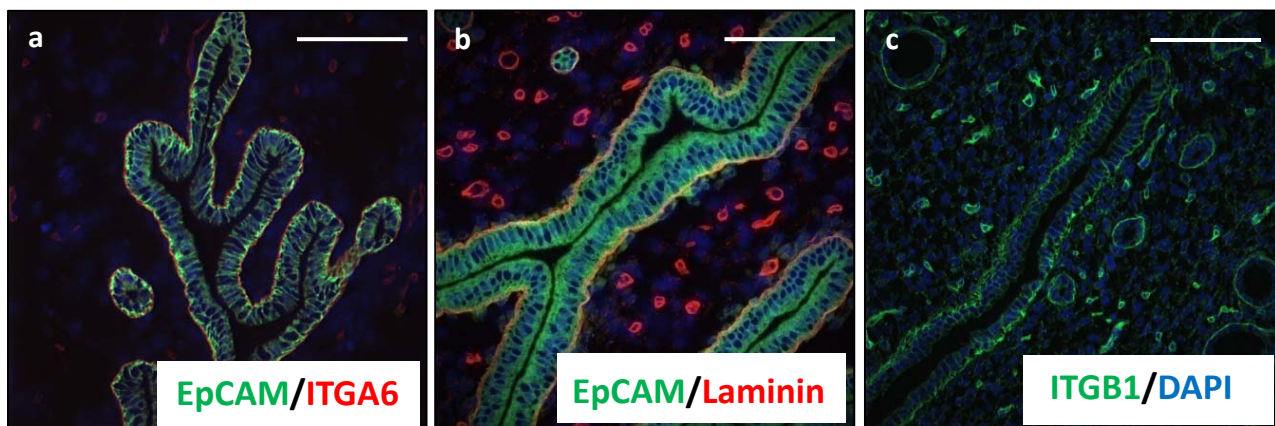
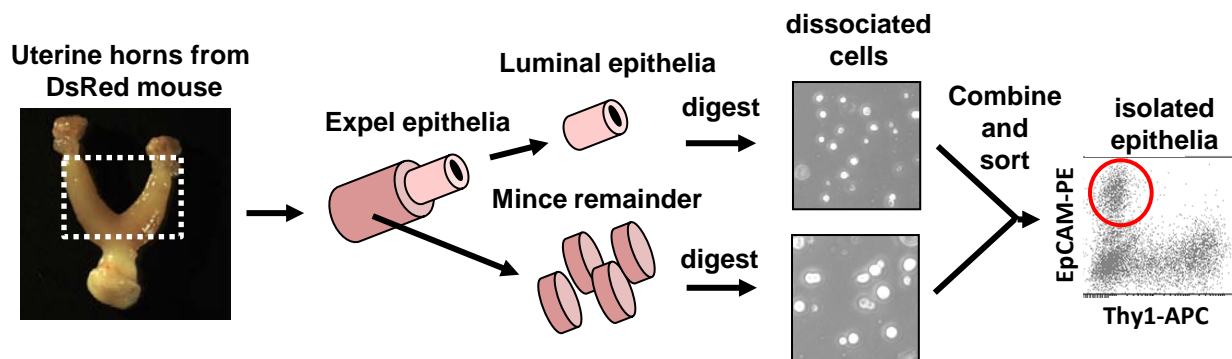


Supplementary Figure S1

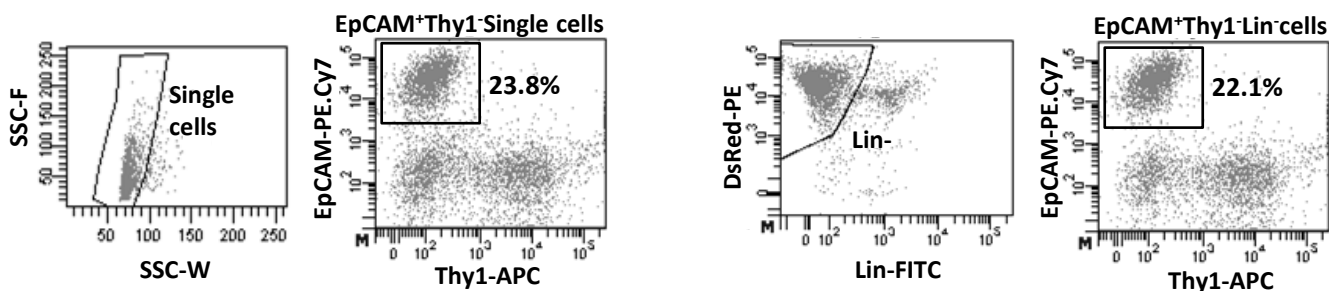
A



B



C



D

Mouse	Day																							
	1	2	3	4	5	6	7	8	9	10	11	12	13	14	15	16	17	18	19	20	21	22	23	24
1	N	LN	LNC	NC	C	C	C	C	C	C	C	C	C	L	LN	LNC	NC	C	C	L	NC	NC	NC	C
2	NC	L	LNC	NC	C	L	L	LNC	LNC	C	CL	L	LN	NC	LNC	NC	C	C	L	NC	NC	NC	C	C
3	LNC	LNC	LNC	C	C	L	L	LNC	NC	C	C	L	LNC	NC	C	C	C	C	L	NC	NC	NC	C	C
4	LN	LN	NC	C	C	LN	LN	LN	NC	C	CL	LN	LN	LN	LN	LN	LN	NC	C	L	L	LN	LN	LN
5	NC	LN	LN	NC	C	LN	LN	LN	NC	C	CL	L	LN	LN	LNC	C	C	L	LN	NC	NC	C	C	C

N= nucleated cells on vaginal cytology

C= cornified cells on vaginal cytology

LNC= mixture of leucocytes, nucleated and cornified cells

L= leucocytes predominantly

Proestrus

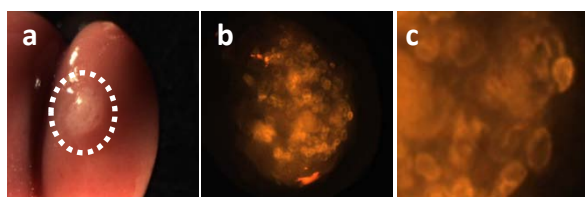
Estrus

Metaestrus

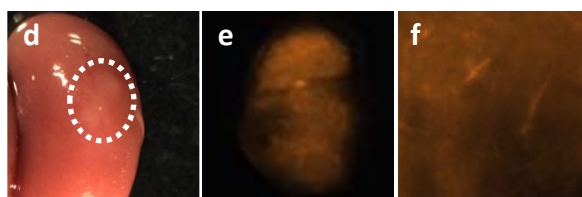
Diestrus

E

EpCAM⁺ Thy1⁻ with neonatal stroma



EpCAM⁻ Thy1^{+/-} with neonatal stroma

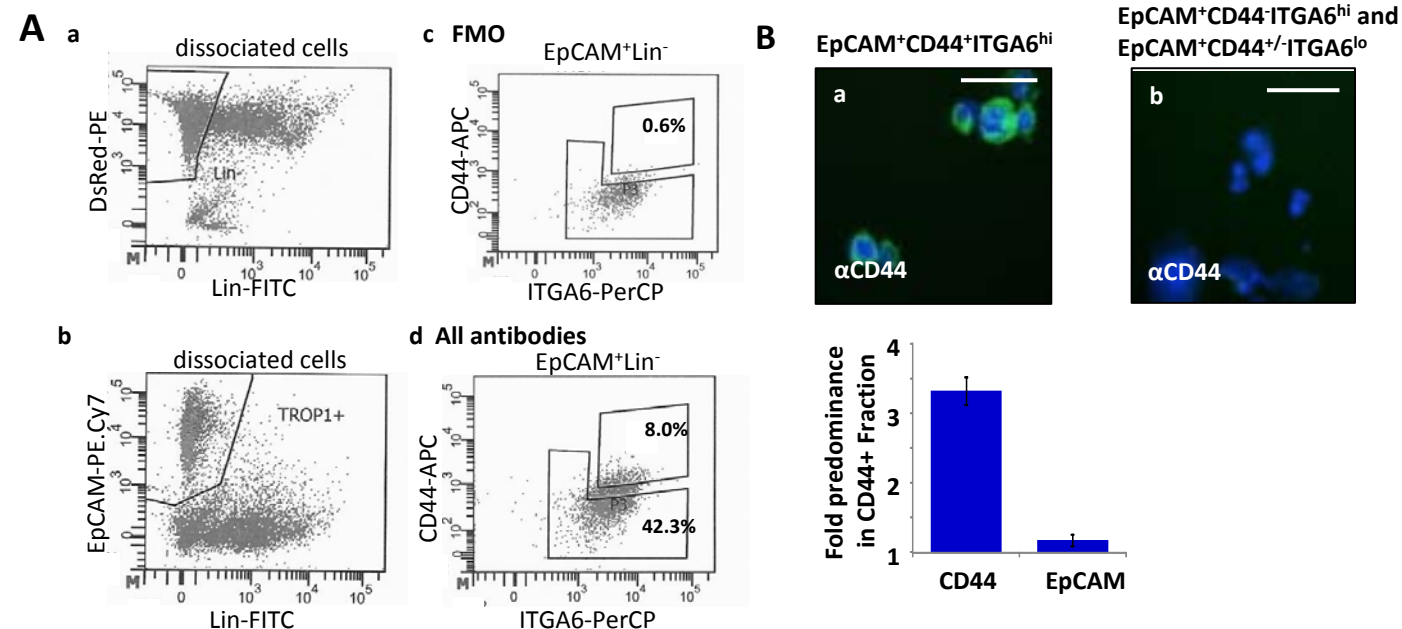


Estimated number of progenitors based on an in vivo serial dilution assay

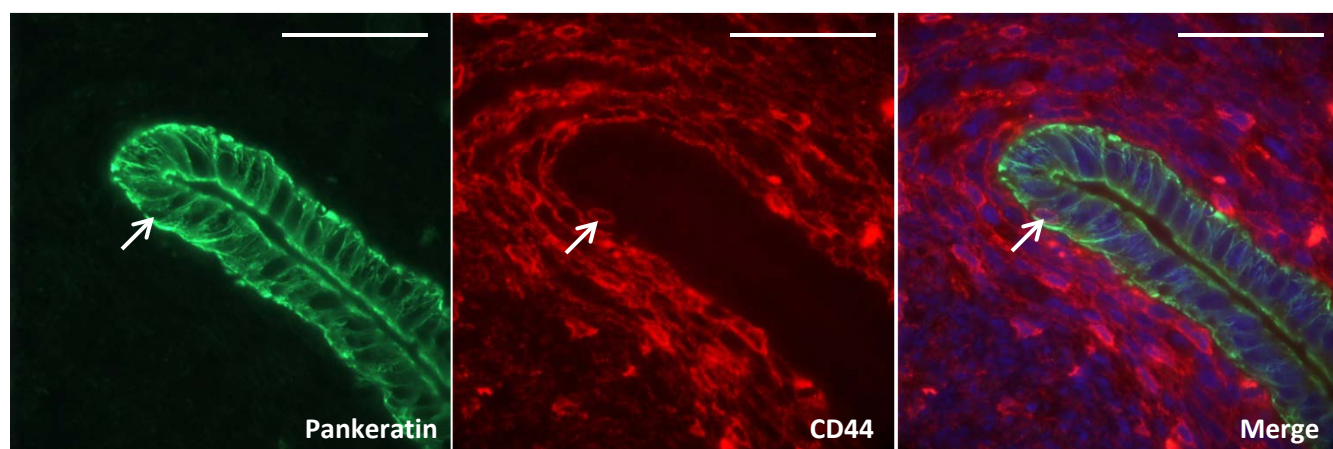
Epithelial cell source	Number cells per graft	Number grafts with glands	Average number glands per graft	Average number cells capable of Forming a gland
Hormonally Intact	10,000	7/7	15	1 in 862
	1,000	7/11	2	
	100	2/10	0	
	10	0/2	0	
Hormonally deprived	10,000	8/8	48	1 in 69
	1,000	10/10	13	
	100	10/13	3	
	10	1/6	0	

Hormone deprivation resulted in increased regeneration potential significantly, P <0.0001

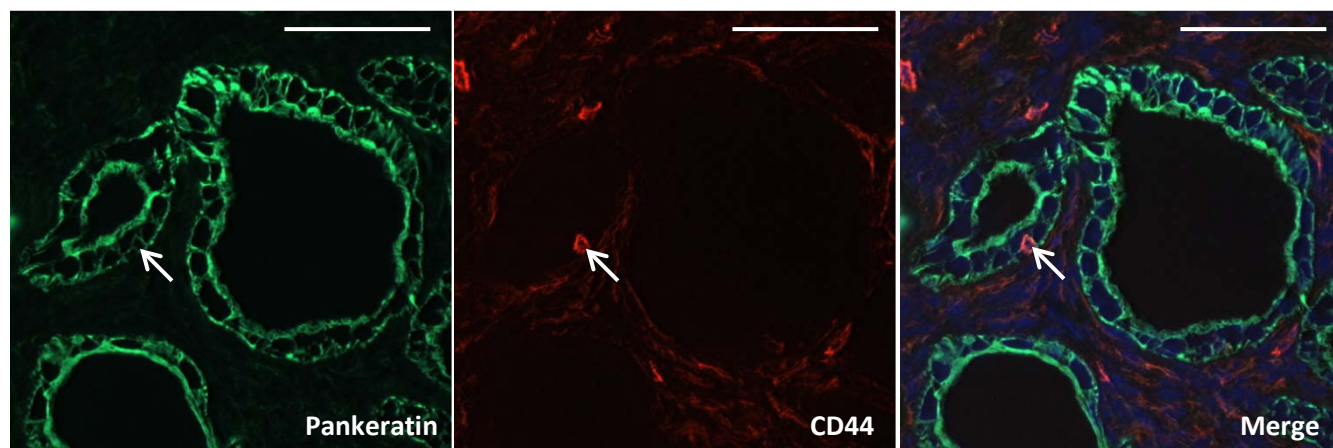
Supplementary Figure S3



C Native uterus

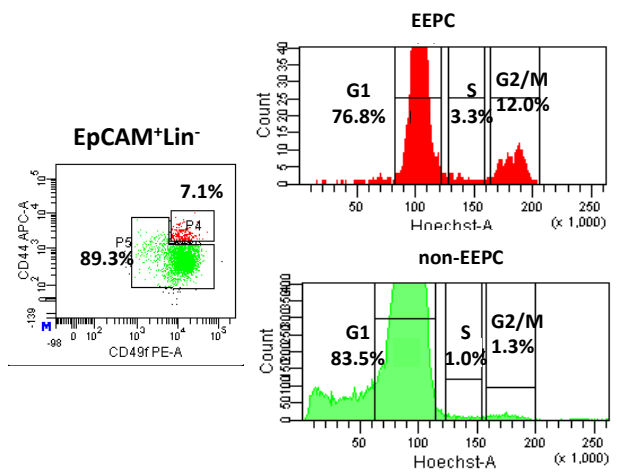


Graft regenerated from EpCAM⁺CD44⁺ITGA6^{hi} cells

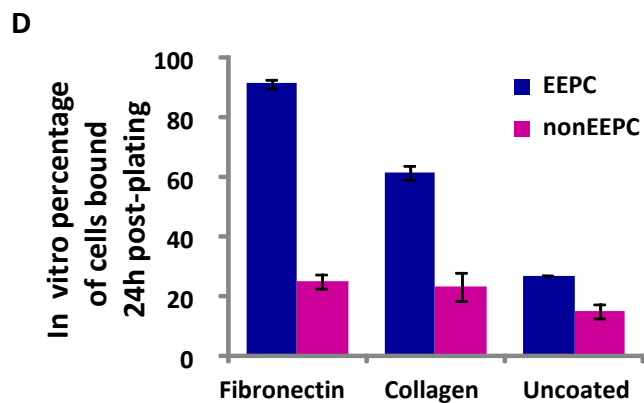
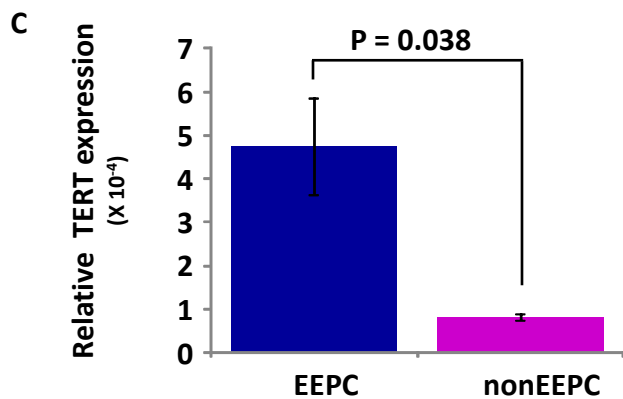
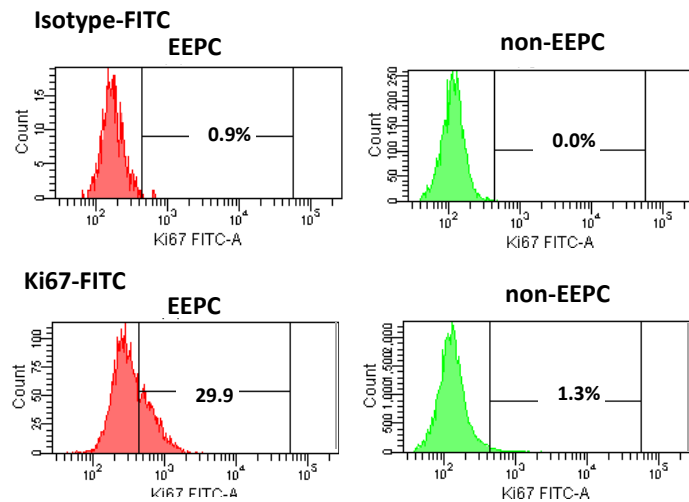


Supplementary Figure S4

A Cell Cycle Analysis

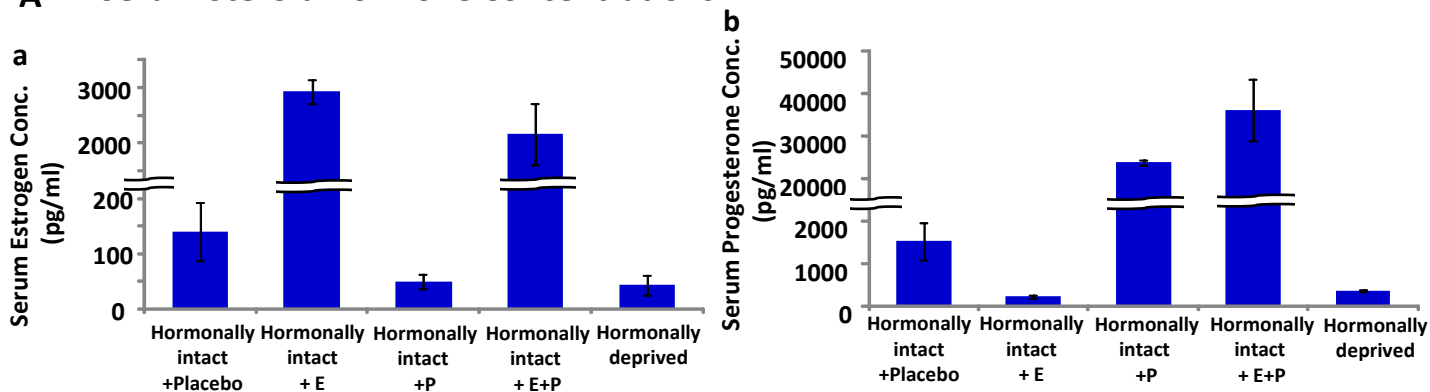


B Proliferation Analysis with Ki67

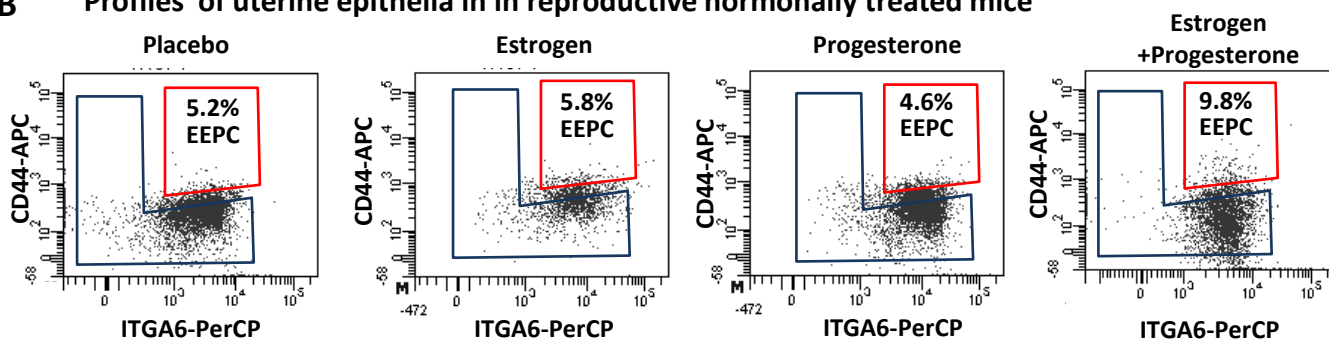


Supplementary Figure S5

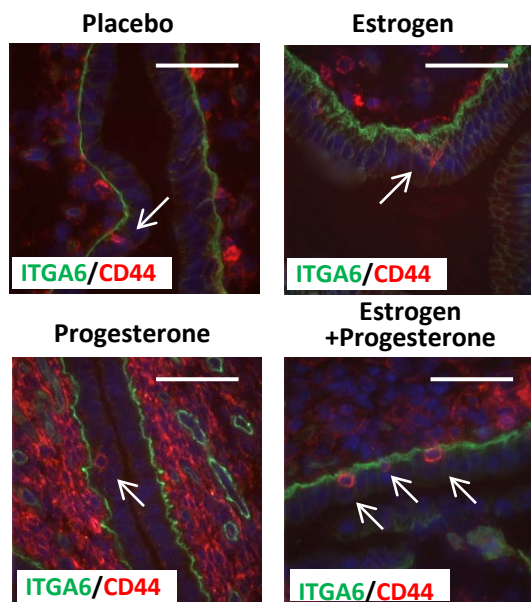
A Serum Steroid Hormone Concentrations



B Profiles of uterine epithelia in in reproductive hormonally treated mice



C



D Estimation of progenitors based on in vivo serial dilution assay

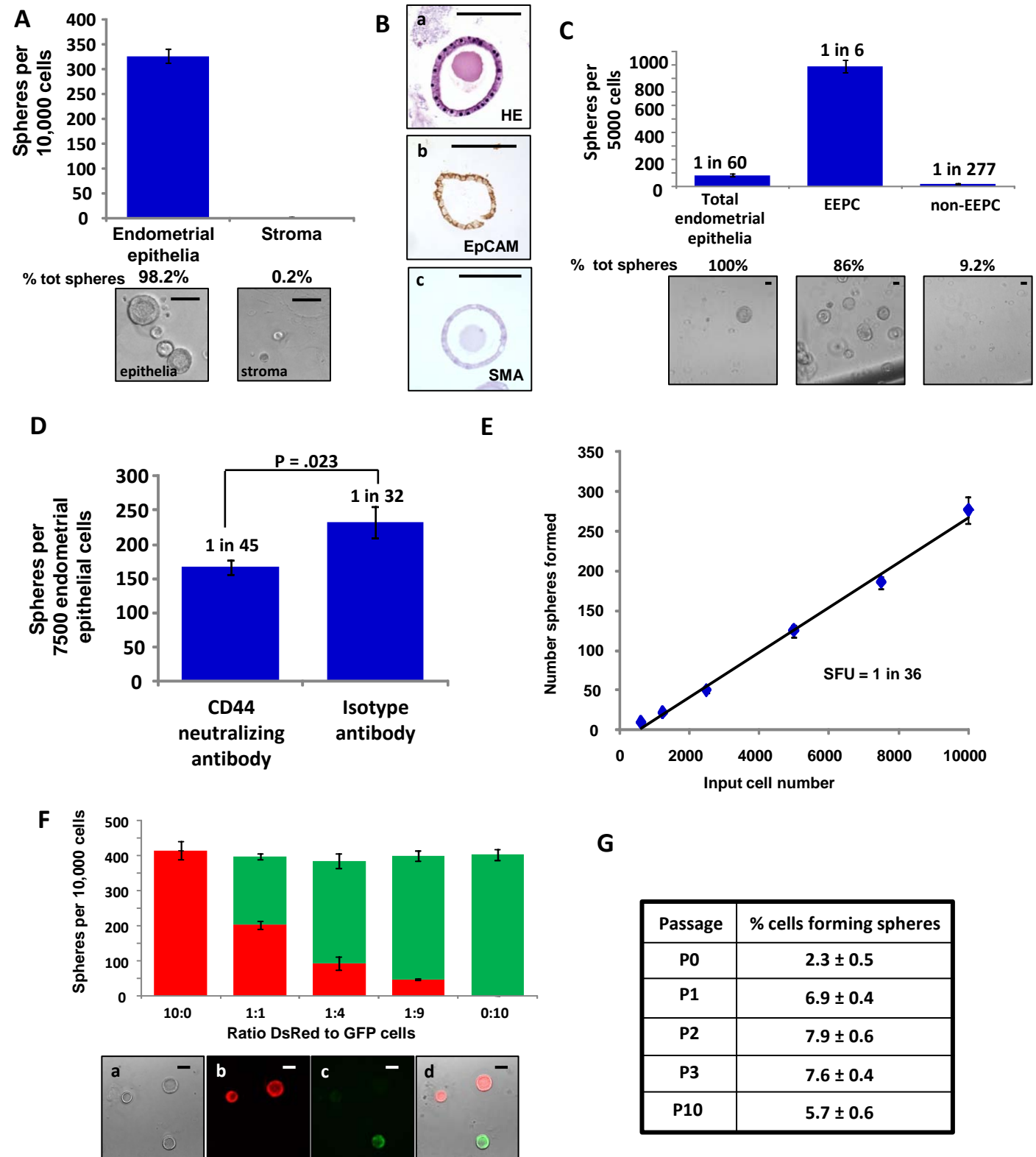
Cell Dose	Grafts with Regeneration	
	Placebo	E+P
10000	8/8	6/6
1000	5/8	7/7
100	0/7	3/8

Placebo 1 in 1166

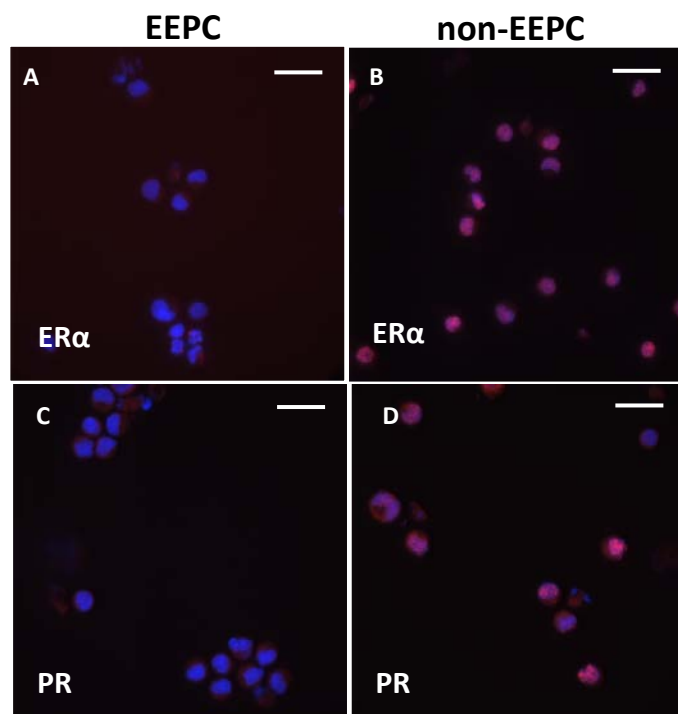
E + P 1 in 198

P = 0.006

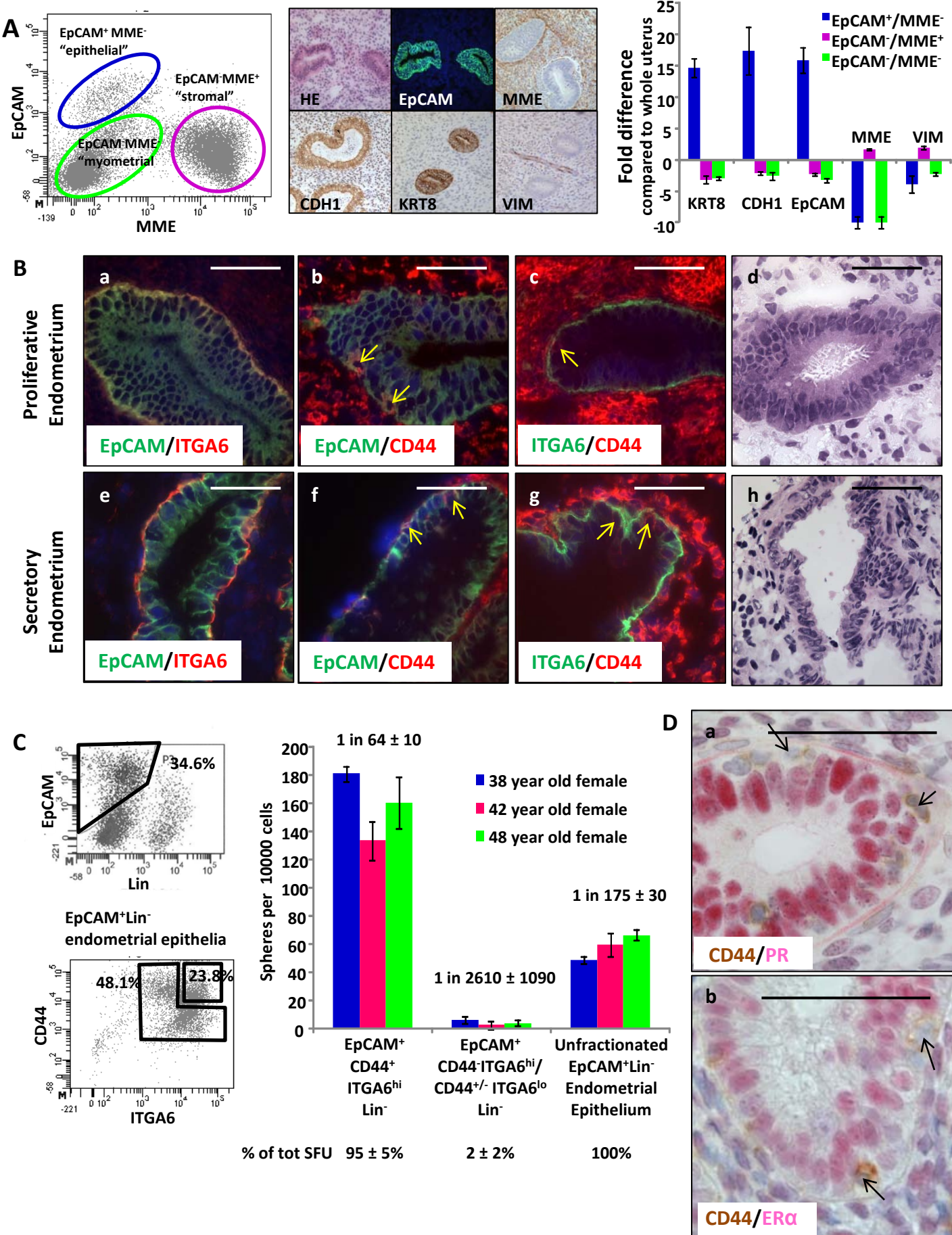
Supplementary Figure S6



Supplementary Figure S7



Supplementary Figure S8



Supplementary Table 1 Antibodies used for immunohistochemistry

Biotinylated anti-CD326 (EpCAM, clone G8.8)	eBioscience	13-5791	1:100
Biotinylated-CD90.2 (Thy1, clone 53-2.1)	BD Bioscience	553001	1:500
Biotinylated CD29 (ITGB1, clone HMb1-1)	eBioscience	12-0291	1:250
Anti-laminin	Sigma	L9393	1:400
Anti- CD49f (ITGA6, clone GoH3)	BD Pharmingen	555734	1:250
Biotinylated anti- CD49f (ITGA6, clone GoH3)	BioLegend	313603	1:250
Anti- CD44 (clone 1M7)/ -FITC	eBioscience	14-0441/11-0441	1:250
Anti- smooth muscle actin (SMA, clone 1A4)	Sigma	A2547	1:400
Anti-pankeratin (clone PCK-26)	Sigma	C1801	1:750
Anti-estrogen receptor α (ER α , clone 1D5)	Dako	M7047	1:100
Anti-progesterone receptor (PR, clone SP2)	Labvision	RM-9102-S0	1:250
Anti- β -catenin(CTNNB1 clone14/Beta-Catenin)	BD Transduction	610154	1:200
Biotinylated anti-CD325 (EpCAM, clone 1B7)	eBioscience	13-9326	1:100
Anti-CD10 (MME, clone 56C6)	Vector	VP-C328	1:100
Anti-keratin 8 (KRT8, clone 1E8)	Covance	MMS-162P	1:1000
Anti-E-cadherin (CDH1, clone 34/Ecadherin)	BD Transduction	610404	1:200
Anti-Vimentin (VIM, cloneLN-6)	Sigma	V2258	1:200
Alexa-594 anti-rat	Invitrogen	A21209	1:1000
Alexa-594 anti-rabbit	Invitrogen	A11012	1:1000
Biotinylated anti-rat	Jackson IR	312-065-003	1:1000
Biotinylated anti-mouse	Vector	BMK-2202	1:1000
Biotinylated anti-rabbit	Jackson IR	111-065-003	1:1000
SA-fluorescein isothiocyanate (FITC)	Jackson IR	016-010-084	1:1000
SA-Horseradish peroxidase	Jackson IR	016-010-084	1:1000
Alkaline-phosphatase anti-mouse	Vector	AP-2000	1:250
Alkaline-phosphatase anti-rabbit	Vector	AP-1000	1:250
Alkaline Phosphatase substrate Kit I	Vector	SK-5100	

Supplementary Table 2 Antibodies used for FACS

Anti-mouse CD31-FITC/PE.Cy.7 (PECAM1, clone 390)	eBioscience	11-0311/25-0311
Anti-mouse CD45- FITC/PE.Cy.7 (PTPRC, clone 30-F11)	eBioscience	11-0451/25-0451
Anti-mouse Ter119- FITC/PE.Cy.7 (clone TER-119)	eBioscience	11-5921/25-5921
Anti-mouse CD326-PE/PE.Cy7 (EpCAM, clone G8.8)	eBioscience	12-5791/25-5791
Anti-mouse CD90.2-FITC/APC (Thy1, clone 53-2.1)	eBioscience	11-0902/17-0902
Anti-human/mouse C49f-PE/PerCP eFluor 710 (ITGA6, clone GoH3)	eBioscience	12-0495/46-0495
Anti- human/mouse CD44-APC (clone IM7)	eBioscience	17-0441
Anti-human CD31-FITC (PECAM-1, clone WM59)	eBioscience	11-0319
Anti-human CD45-FITC (PTPRC, clone 2D1)	eBioscience	11-9459
Anti-human CD235a-FITC (GYPA, clone HIR2)	eBioscience	11-9987
Anti-human CD326-PE (EpCAM, clone 1B7)	eBioscience	12-9326
Anti-human CD10-FITC/PE.Cy7 (MME, CB-CALLA)	eBioscience	11-0106/25-0106

Supplementary Table 3 Primers used for QPCR

mouse primers

CDH1 F	5'-CCTGCCAATCCTTGATGAAAT-3'
CDH1 R	5'-GAACCACTGCCCTCGTAATC-3'
DES F	5' - TGCAGCCACTCTAGCTCGTA-3'
DES R	5' - GACATGTCCATCTCCACCTG-3'
SMA F	5'-ATAGGTGGTTTCGTGGATGC-3'
SMA R	5'-TCCCTGGAGAAGAGCTACGA-3'
EpCAM F	5'-GCGGCTCAGAGAGACTGTG-3'
EpCAM R	5'-CCAAGCATTTAGACGCCAGTTT-3'
CD44 F	5'-ATCAGCAGATCGATTTGAATGTAA-3'
CD44 R	5'-CATTTCTTCTATGAACCCATAACC-3'
cMyc F	5'-CTGGATTTCTTTGGGCGTT-3'
cMyc R	5'-TGGTGAAGTTCACGTTGAGGG-3'
cJun F	5'- CAT AGC CAG AAC ACG CTT CC-3'
cJun R	5'- AGT TGC TGA GGT TGG CGT AG-3'
Cyclin D1F	5'- CCCTGACACCAATCTCCTCAAC-3'
Cyclin D1R	5'- GCATGGATGGCACAATCTCCA-3'
Axin2 F	5'- GCA GGA GCC TCA CCC TTC-3'
Axin2 R	5'- TGC CAG TTT CTT TGG CTC TT-3'
Id2 F	5'-CCTGAACACGGACATCAGC-3'
Id2 R	5'-CACAGAGTACTTTGCTATCATTCG-3'
TERT F	5'-TGGCTTGCTGCTGGACACTC-3'
TERT R	5'-TGAGGCTCGTCTTAATTGAGGTCTG-3'
GAPDH F	5'-TGTTCCCTACCCCCAATGTGT-3'
GAPDH R	5'-TGTTCCCTACCCCCAATGTGT-3'

human primers

EpCAM F	5'-GGACCTGACAGTAAATGGGGGAAC-3'
EpCAM R	5'-CTCTTCTTTCTGGAAATAACCAGCAC-3'
KRT8 F	5'-TCCCAGATCTCGGACACATCT-3'
KRT8 R	5'-GGAGCGGCTGTTGTCCAT-3'
CDH1 F	5'-AGTGTCCCCCGGTATCTTCC-3'
CDH1 R	5'-CAGCCGCTTTCAGATTTTCAT-3'
MME F	5'-CACAGTCCAGGCAAT TTCAG-3'
MME R	5'-AAACCCGGCACTTCTTTTCT-3'
VIM F	5'-GACAATGCGTCTCTGGCACGTCTT-3'
VIM R	5'-TCCTCCGCCTCCTGCAGGTTCTT-3'
GAPDH F	5'-AGCCACATCGCTCAGACAC-3'
GAPDH R	5'-GAGGCATTGCTGATGATCTTG-3'

Supplementary Table 4 Antibodies used for western blot

Anti-ERK2 (C-14)	Santa Cruz	sc-154
Anti-estrogen receptor α (ER α , MC-20)	Santa Cruz	sc-542
Anti-progesterone receptor (PR, clone SP2)	Labvision	RM-9102-S
Anti- β -catenin (CTNNB1, clone 14/Beta-Catenin)	BD Transduction	610154
HRP-anti-mouse	Bio-Rad	170-6516
HRP-anti-rabbit	Bio-Rad	170-6515

Supplementary Table S5. Genes up- and down-regulated more than 2-fold in EEPC vs non-EEPC

Gene_symbol	Gene_ID	Cluster	RPKM 90.1	RPKM90.2	RPKM90.3	UtESC-.1	UtESC-.2	UtESC-.3	UtESC+.1	UtESC+.2	UtESC+.3	Fold change expressed as ratio		
												non EEPC	EEPC to stroma	non EEPC to stroma
Arg1	ENSMUSG00000019987	A	1.46629058	2.2757654	1.0803103	394.5528	243.28884	473.4552	17.327118	34.390301	39.989673	0.08252259	19.017032	230.446383
Cuzd1	ENSMUSG00000040205	A	0.2045377	0.2719096	0.7567341	21.15999	9.6239413	15.73086	1.2315142	1.9394699	2.4696517	0.12126543	4.574052	37.7193413
Chi3l1	ENSMUSG00000064246	A	0.33477114	0.0142384	0.0249015	124.2445	5.3370428	3.7002373	4.3116585	2.1106823	5.2312878	0.08743603	31.166851	356.453177
Gpr110	ENSMUSG00000041293	A	0.03683304	0.0553521	0.0726041	5.018997	1.2649238	6.1204544	0.2514258	0.3796819	0.5515281	0.09534022	7.1766568	75.274181
AA467197	ENSMUSG00000033213	A	0.12478109	0.1250127	0.2295668	16.88403	3.1802444	7.0872379	0.9464082	1.00043	1.0308628	0.10966979	6.2118185	56.641106
Ceacam12	ENSMUSG00000030366	A	0.02380371	0.0178859	0.0093842	3.120919	0.3701747	3.0335927	0.1299891	0.1942537	0.2212326	0.08360178	10.680132	127.75005
Ltf	ENSMUSG00000032496	A	11.4771151	7.6029582	4.927648	3885.235	1956.1274	2368.8995	426.94899	667.7237	873.04585	0.23966576	81.961904	341.98421
Egln3	ENSMUSG00000035105	A	4.30497902	5.2576849	5.2018419	59.45931	9.2579376	38.607076	4.9007306	5.0089616	6.6615605	0.15440352	1.122371	7.2690765
Lcn2	ENSMUSG00000026822	A	9.3424755	8.3329916	5.8236564	2514.435	1376.6003	1986.3649	233.88291	516.97783	583.73162	0.22707187	56.793283	250.111482
Ccdc88b	ENSMUSG00000047810	A	0.07534241	0.0823443	0.0864073	24.04647	7.3850098	19.541161	1.9823707	3.2772014	3.9609279	0.18089116	37.774388	208.823852
Nlrc4	ENSMUSG00000039193	A	0.00924425	0.0069461	0.0437327	2.582818	1.2459077	2.7727793	0.2187539	0.4486639	0.4295821	0.16617423	18.306826	110.166458
Ctca2	ENSMUSG00000028262	A	0.02534848	0.0253955	0	19.72787	3.5696796	4.5333555	2.5531699	1.1794653	1.9108954	0.20277924	111.21568	548.456946
Trib2	ENSMUSG00000020601	A	1.97777412	2.9988008	3.1970685	11.47768	5.3465842	7.6066172	3.2001115	1.9912297	2.1448761	0.30028454	0.8975456	2.98898358
Pglyrp1	ENSMUSG00000030413	A	1.66716826	1.2918442	1.2323502	459.6278	135.03315	234.62378	29.683475	53.055711	71.017518	0.18540882	36.68418	197.855641
Galnt6	ENSMUSG00000037280	A	0.30695552	0.3002724	0.1232954	19.19908	11.36335	21.971579	5.7034519	3.276095	4.7069156	0.26052573	18.735149	71.9128547
C3	ENSMUSG00000024164	A	181.876988	166.86788	132.77459	3609.346	2355.6692	3579.4358	390.90773	792.18336	1068.0018	0.23585357	4.6749781	19.8215281
Abp1	ENSMUSG00000029811	A	0.77447352	0.4673796	0.43755	124.8192	63.649562	160.13978	20.946704	22.831846	31.424292	0.21572291	44.779506	207.578815
Zbp1	ENSMUSG00000027514	A	2.53424461	1.271375	2.0101329	8.770832	5.8604271	10.129185	1.3811569	2.2747235	2.4524971	0.24669903	1.0503159	4.25747895
Lrg1	ENSMUSG00000037095	A	5.40989006	5.0121224	1.3459162	159.5288	79.909839	100.88572	59.133265	23.574291	26.007699	0.31944604	9.238266	28.919645
Slc16a14	ENSMUSG00000026220	A	0.09984829	0.1333782	0.0787271	25.26132	11.04181	27.652569	6.684471	4.2218516	5.6367051	0.25866384	53.030421	205.016752
Slc27a2	ENSMUSG00000027359	A	0.0786296	0.0590817	0.1102166	15.41124	9.804883	21.837657	4.8186696	2.5966942	4.9801768	0.26343345	49.996558	189.78819
Irf7	ENSMUSG00000025498	A	4.73919102	3.7160983	3.295887	39.19838	24.811826	40.042351	6.1843015	11.078991	13.287593	0.29361015	2.5998151	8.85464992
Oasl1	ENSMUSG00000041827	A	0.30247694	0.3367094	0.3179907	20.41906	13.487304	13.299037	2.7223923	6.2552257	5.3853048	0.30426439	15.005503	49.3173147
Prss32	ENSMUSG00000048992	A	0.01484495	0.0557719	0.0819332	10.2671	4.3477849	11.372126	0.8647082	1.6705177	2.4068023	0.19017298	32.396103	170.350714
Mmp7	ENSMUSG00000018623	A	0.46335069	0.1492106	0.1565729	143.7654	54.728482	128.07448	14.338367	14.044616	34.246138	0.19177953	81.428081	424.59214
Il4i1	ENSMUSG00000074141	A	0.69279621	0.4412709	0.6113624	6.280736	5.3631018	8.8901911	1.1441687	1.8228101	2.070485	0.24532272	2.8860885	11.7644565
S100a9	ENSMUSG00000056071	A	0.20390474	0.2553541	0	26.77299	5.1087541	3.5413748	3.5879386	1.985117	1.965288	0.21280857	16.414151	77.131061
Pla2g2e	ENSMUSG00000028751	A	0.18905555	0.2604339	0.4968801	65.28737	20.498536	27.687699	2.1795293	5.4269233	8.4600636	0.14158814	16.976999	119.904107
Krt6b	ENSMUSG00000023041	A	0.20720239	0.0239524	0.0125671	28.70863	20.944515	13.130201	1.7988048	5.113793	7.4067216	0.22807511	58.752715	257.602483
Ada	ENSMUSG00000017697	A	2.85695741	2.5086387	2.5800313	17.97378	10.762825	18.501882	3.870136	5.8072544	4.9571866	0.30980196	1.8418403	5.94521847
Plac8	ENSMUSG00000029322	A	47.2486662	51.957422	42.964564	248.2092	114.00635	224.92836	18.127535	63.254316	54.514601	0.23145338	0.9558685	4.12985344
Chn2	ENSMUSG00000004633	A	0.14889447	0.1310573	0.0737932	4.469397	2.4808698	4.4270972	1.0066878	1.3886578	1.3135415	0.32598825	10.484635	32.1626172
Cfb	ENSMUSG00000090231	A	0.43850094	0.3118352	0.3395695	71.73067	31.092254	36.774134	3.4636159	11.249928	15.024164	0.21302532	27.284665	128.081788
Slc16a3	ENSMUSG00000025161	A	1.30564283	1.1882282	0.7800847	5.17465	1.3977551	2.5180898	0.9668982	0.7558391	1.0007567	0.299598	0.8318665	2.77660895
Slc5a1	ENSMUSG00000011034	A	0.05287545	0.0750459	0.0787488	14.86408	10.917963	9.4397673	1.9463631	4.7540481	4.5320453	0.31890631	54.349673	170.425206
Apol7a	ENSMUSG00000010601	A	0.2208492	0.0995666	0.0696529	2.358181	1.7458488	3.9807959	0.241206	0.6402812	0.638581	0.18801496	3.8969236	20.7266677
Ddx60	ENSMUSG00000037921	A	0.94781393	0.804671	0.5499756	2.682746	1.1272699	2.6694217	0.4033163	0.6643908	0.7881088	0.28641618	0.8060142	2.81413631
Nt5e	ENSMUSG00000032420	A	0.29731361	1.1244424	4.5243431	25.11351	15.668749	16.370263	7.630884	6.206149	10.367286	0.42350399	4.0706215	9.6117666
Tmem178	ENSMUSG00000024245	A	0.50206733	1.1946235	0.6597724	3.904548	1.4639472	3.5055954	0.6092726	0.9524183	0.8641175	0.27335855	1.0294277	3.76585133
Rasal1	ENSMUSG00000029602	A	0.03994531	0.072035	0.0314956	4.395635	0.9939121	1.4287743	1.0325119	0.5387243	0.5115046	0.30546244	14.516312	47.5224128
Krtap4-16	ENSMUSG00000046474	A	0.0961502	0	0.0189528	5.876523	1.6821508	4.0281096	1.3564158	1.1872965	0.8439782	0.2923754	29.431814	100.66447
Ifi44	ENSMUSG00000028037	A	0.72677649	0.5660247	0.2509661	10.23558	4.5648796	10.802212	0.9656533	2.6886449	2.6679112	0.2469355	4.0953125	16.5845435

Naip1	ENSMUSG00000021640	A	0.01988385	0.0647425	0.0418074	5.912201	5.2566818	10.770832	1.1582212	1.8959404	2.2586834	0.24215653	42.020796	173.527415
Hgfac	ENSMUSG00000029102	A	0.7254471	0.7352449	0.6518037	102.3872	71.799495	120.64077	42.594615	31.267217	39.704865	0.38519718	53.759493	139.563569
Sftpd	ENSMUSG00000021795	A	0.91837919	1.225214	0.7093337	279.6208	224.23463	284.83411	69.905099	91.907105	123.23183	0.36141477	99.912842	276.449253
Cp	ENSMUSG00000003617	A	3.5564101	3.1045363	5.2724364	48.28063	11.890064	21.449403	11.233779	7.3390894	10.842922	0.36039884	2.4650001	6.83964498
Rnf186	ENSMUSG00000070661	A	0	0.0637774	0.1338486	5.539971	1.9066164	4.3029559	2.111562	0.8506447	1.6946075	0.39634	23.563774	59.4534327
C2	ENSMUSG00000024371	A	3.1030671	4.2938757	2.4321308	8.64737	2.7870758	3.4092599	0.9954759	1.6415772	1.9417053	0.30846463	0.4658382	1.51018362
Dio3os	ENSMUSG00000090962	A	5.51163583	2.2684054	2.2711416	15.20717	12.993225	15.210943	1.411648	4.9249169	4.2616306	0.24413427	1.0544227	4.31902795
Pla2g15	ENSMUSG00000031903	A	9.07979357	6.487278	7.6970844	16.5045	16.527878	19.253146	4.729073	5.8328574	6.5038905	0.32639668	0.7335672	2.24747127
Muc20	ENSMUSG00000035638	A	0.30836351	0.4567839	0.3959617	87.95673	61.472508	95.011113	20.367588	35.10916	35.401223	0.37177974	78.268243	210.523154
Trim30a	ENSMUSG00000030921	A	0.71448784	0.6319617	0.3283526	3.906031	2.6031718	3.691101	1.1890982	1.4081323	1.3027989	0.38234445	2.3286509	6.09045302
Casc1	ENSMUSG00000043541	A	0.46048697	1.0512003	1.2725044	1.900756	1.6481889	2.8038063	0.3911696	0.7063671	0.7382063	0.28896819	0.659345	2.28172187
Cited1	ENSMUSG00000051159	A	0.57128896	0.6707221	0.8821164	5.42413	2.3135921	3.4693574	0.6499453	1.6562685	1.7944425	0.36589875	1.9305133	5.27608616
Ankrd22	ENSMUSG00000024774	A	0	0.0916116	0.0320439	4.265856	2.9493838	6.371646	1.0850124	1.5186326	1.0212358	0.26679262	29.314352	109.876923
Fam84a	ENSMUSG00000020607	A	8.45248204	7.439895	5.1577448	41.8889	44.767745	58.227507	9.1169106	17.038112	17.966893	0.30453239	2.0960409	6.8828175
Csf2	ENSMUSG00000018916	A	0.04434928	0.0333237	0	4.189603	2.8736742	3.7471574	0.645829	0.8190797	1.3281486	0.25836678	35.959184	139.178822
2010012P19Rik	ENSMUSG00000085890	A	0.43019085	0.5103822	0.4105999	3.279673	1.2323606	2.5188295	0.6182153	0.8071547	0.9586355	0.33907726	1.764397	5.2035251
Tnfrsf23	ENSMUSG00000037613	A	4.19142617	1.9916239	2.5116484	17.97748	16.885099	14.491707	3.2698361	6.6626415	7.3128765	0.34941957	1.9834332	5.67636563
Apobec2	ENSMUSG00000040694	A	0.17477549	0.5252998	0.206707	55.13591	54.359157	60.381124	6.4158705	20.743639	16.815245	0.25886355	48.49538	187.339543
Atg9b	ENSMUSG00000038295	A	0.07298791	0.1535592	0.1438714	10.61419	10.385663	17.647588	2.3648952	3.5769076	5.170555	0.28753149	29.999472	104.334562
Sprr2a3	ENSMUSG00000074445	A	0.04914048	0.1846189	0.0387456	24.08327	15.029077	29.479022	1.4311999	6.7117786	7.2566722	0.22451294	56.511444	251.70685
Isg15	ENSMUSG00000035692	A	7.74352521	7.1936893	6.8825781	38.7456	29.192881	32.977629	7.0904501	14.633982	14.92683	0.36318544	1.6797255	4.62498038
D14Ertd668e	ENSMUSG00000068245	A	0.50984324	0.3788357	0.3349954	1.618442	0.983739	1.675242	0.3815371	0.6107156	0.4387504	0.33454797	1.1694313	3.49555654
Uox	ENSMUSG00000028186	A	0.12091823	0.2044283	0.04767	32.27848	28.989749	28.762617	3.6500983	12.810715	8.4286431	0.27645478	66.724805	241.358841
Irx3	ENSMUSG00000031734	A	0.33285601	0.4206319	0.4413863	3.118449	2.3136447	5.518202	0.6609763	0.9357662	1.2811786	0.26281675	2.4085557	9.16439182
Dio3	ENSMUSG00000075707	A	24.2937932	33.067624	28.911421	46.79047	41.26766	67.091961	7.2854596	14.480511	20.828042	0.27453424	0.4937129	1.79836546
Xdh	ENSMUSG00000024066	A	19.6225718	15.409019	22.691896	26.1838	20.911921	29.016777	7.8595126	10.178615	10.690158	0.37744503	0.497688	1.31857077
Ifit1	ENSMUSG00000034459	A	2.55141946	3.3524453	3.4230661	39.25746	28.321271	30.64317	4.7902223	16.747644	10.690852	0.32812152	3.4554473	10.5309987
Ilgam	ENSMUSG00000030786	A	0.21296173	0.3636768	0.8853608	37.66471	22.460008	47.383023	1.9523586	9.63249	10.21226	0.2027492	14.909109	73.5347378
Fam184b	ENSMUSG00000015879	A	0.15493199	0.0840773	0.2646773	1.793793	1.0708306	3.0059681	0.7363892	0.4732054	0.6221982	0.31202863	3.6367713	11.6552489
Hist1h2ac	ENSMUSG00000069270	A	0.24300976	0.2040775	0.3944812	5.074215	4.9276218	4.2473823	0.9887792	1.8296254	1.7123592	0.31796576	5.3837142	16.9317419
Clca4	ENSMUSG00000037033	A	0.17981037	0.1137753	0.0895418	54.58401	56.023233	24.734504	2.9974457	12.897405	11.463606	0.20214351	71.408242	353.255186
Dhx58	ENSMUSG00000017830	A	1.35206905	1.2499715	1.5683943	6.500882	4.0180983	6.5692384	1.5205071	2.5205259	2.8728977	0.40460219	1.6578441	4.04746684
Cxcl17	ENSMUSG00000060188	A	2.14461699	2.0318266	1.2498395	397.1089	464.50055	518.33215	134.25774	151.18545	182.75961	0.33929174	86.284255	254.306974
Sifn5	ENSMUSG00000054404	A	5.67370862	3.3945813	2.5914949	5.20531	4.2593945	4.9803712	0.7506994	2.2678223	1.4905799	0.31215494	0.3867225	1.2388801
Cd200r3	ENSMUSG00000036172	A	0.02937733	0.0504546	0.0463261	1.826124	0.9898438	2.2280236	0.3972452	0.6903737	0.5417344	0.32302855	12.915173	39.981521
Muc4	ENSMUSG00000079620	A	0.48060518	0.5772391	0.3467532	159.0052	100.00867	130.06085	21.350862	66.028488	67.424957	0.39787809	110.21258	277.00087
Serpina1e	ENSMUSG00000072849	A	0.64472523	0.7633625	0.7394101	154.1389	111.40235	268.46374	25.107667	51.162063	64.621906	0.26383954	65.607348	248.663824
Ube2l6	ENSMUSG00000027078	A	6.96627971	5.0692033	4.0054597	10.52101	5.5786395	7.7403773	2.0853577	4.3240908	4.5648854	0.46033234	0.6841452	1.48619843
Uba7	ENSMUSG00000032596	A	4.26384776	3.7654801	2.6397161	18.42657	10.450965	17.28659	6.9565552	6.7782788	8.1539873	0.47415221	2.0516198	4.32692231
Ero1l	ENSMUSG00000021831	A	8.04508975	9.8285911	11.480501	56.6981	21.601779	32.98593	11.333237	16.357356	19.518947	0.42421888	1.6082731	3.79113983
Apol9a	ENSMUSG00000068246	A	0.18371223	0.086275	0.1086383	2.708431	2.678376	2.231317	0.2926086	0.8383747	0.8537146	0.26052319	5.2418499	20.1204737
Tmprss11d	ENSMUSG00000061259	A	0.06257394	0.0658246	0.1381449	17.76243	18.942936	20.072956	1.6629811	6.9877601	5.5571748	0.25023486	53.304308	213.017113
Smpdl3a	ENSMUSG00000019872	A	5.54828366	9.460709	9.227569	108.3852	55.182214	80.00603	46.646195	39.431228	46.248954	0.5432709	5.4597834	10.0498358
Spnb5	ENSMUSG00000074899	A	0.13444399	0.2253527	0.3506307	1.961849	1.6797536	2.8786946	0.6839813	0.6351923	1.1071317	0.37211575	3.4152755	9.17799228
Steap2	ENSMUSG00000015653	A	0.80075301	0.5406	0.4610894	4.494292	1.8018565	3.1863801	1.309635	1.4424204	1.6074719	0.45974311	2.4186777	5.26093309
Rsad2	ENSMUSG00000020641	A	0.78760802	1.6570473	1.1725994	20.8517	19.66917	14.261837	2.6396509	8.9744714	7.1430405	0.34239206	5.1854692	15.1448291

Il1a	ENSMUSG00000027399	A	0.62906781	1.1344241	0.5951989	170.2957	140.26558	184.13084	15.016995	74.66496	63.755589	0.31016779	65.051995	209.731629
Hsd17b2	ENSMUSG00000031844	A	0.0277183	0.0833093	0.0655649	24.42348	28.233849	31.889871	1.6650278	8.0241239	9.0165263	0.22124538	105.92569	478.770201
Gm10238	ENSMUSG00000068348	A	0	0.074675	0	5.120982	3.3485951	7.5572922	0.7236179	1.6647311	0.8210327	0.20025006	42.978007	214.621691
Gm14023	ENSMUSG00000085498	A	0.01992107	0.0299371	0.0471213	4.037554	3.3044833	4.6006649	1.0878646	1.4716761	1.5840376	0.34695484	42.726352	123.146723
Fxyd4	ENSMUSG00000004988	A	0.97649792	1.267357	1.9131749	44.79414	32.365385	37.711175	9.8571058	19.267604	21.084756	0.43709549	12.078207	27.6328792
Cd79b	ENSMUSG00000040592	A	5.16258562	4.7485865	15.608368	32.57455	14.90331	49.360448	11.179678	9.7640793	15.644473	0.37782806	1.4337339	3.79467297
Trim30d	ENSMUSG00000057596	A	0.66637907	0.5586893	0.2544128	2.060239	1.6907976	1.9558117	1.0087087	0.7290952	0.6519321	0.41874886	1.6152527	3.85733046
Mx2	ENSMUSG00000023341	A	1.27708314	1.9963893	1.3657316	4.16854	3.27197	4.0928819	1.0420906	1.7464285	1.5310289	0.37452538	0.9310968	2.48607131
Krt20	ENSMUSG00000035775	A	0.03682348	0.0830066	0.2322728	15.05308	4.7720589	12.393297	5.5969608	4.2940373	4.4871331	0.44627027	40.835029	91.5029128
Dnahc10	ENSMUSG00000038011	A	0.12426692	0.4320799	0.1901971	2.029788	2.0335375	2.3229408	0.1286247	0.7273464	0.7624127	0.25341625	2.1678344	8.5544409
ORF63	ENSMUSG00000025610	A	0.83758932	0.580946	0.6434778	1.979679	1.3916098	1.7541173	0.3127501	0.7379512	0.2883181	0.26125138	0.6493749	2.4856322
Hist2h3c1	ENSMUSG00000070392	A	1.14515138	1.0279807	1.4063084	2.57034	1.7598279	2.0549963	0.8854553	0.8618284	1.1197739	0.4490186	0.8009793	1.78384426
Pdk1	ENSMUSG00000006494	A	1.44389226	1.0751554	1.6974353	3.641858	1.3654562	4.2222782	1.6930072	0.9958925	1.4709165	0.4507042	0.9865607	2.18893161
Adam28	ENSMUSG00000014725	A	0.03856459	0.0434657	0.0304069	9.637744	2.6237895	4.9147499	2.1761628	2.3644819	2.7578499	0.42491698	64.911742	152.76335
Tnfaip2	ENSMUSG00000021281	A	1.75876127	3.0817944	1.8388579	6.75039	3.5887651	3.436833	0.9865328	2.9810588	2.1953541	0.44736869	0.9226777	2.06245475
Spock1	ENSMUSG00000056222	A	0.16870514	0.0606261	0.0751843	2.376946	2.0342072	0.8676486	0.6408888	0.7813098	0.5605241	0.3756009	6.5110712	17.3350786
Fcgbp	ENSMUSG00000047730	A	1.55087232	1.2446787	0.6357807	227.8571	103.01492	187.03137	128.39672	74.061239	92.027437	0.56861064	85.822481	150.933652
Ifit2	ENSMUSG00000045932	A	3.50154696	2.3350439	3.5615012	3.919305	3.1991162	1.7011521	0.5577107	1.6430566	1.1209436	0.37662941	0.3534452	0.938443
Prap1	ENSMUSG00000025467	A	5.60803808	2.6228983	4.3766321	2158.543	2567.8411	3740.3078	168.22803	463.42829	912.53709	0.18238451	122.48146	671.55626
Flt1	ENSMUSG00000029648	A	0.14429713	0.2721657	0.2484442	5.670102	6.4266499	3.8193138	0.8951978	2.720653	1.9979705	0.35271414	8.4430168	23.9372794
Lrrc36	ENSMUSG00000054320	A	0.21712026	0.3559473	0.3812916	3.424149	1.8161301	1.9595705	1.3832776	1.2843738	1.2026016	0.53754634	4.0553426	7.54417298
Ces1d	ENSMUSG00000056973	A	2.11425344	2.8764611	2.0813074	70.25827	19.098382	46.015868	14.93878	14.459563	30.579523	0.4430579	8.4810067	19.1419829
Brf2	ENSMUSG00000031487	A	5.38733128	3.816685	3.4790948	17.77224	5.651767	20.989139	5.9773034	5.7737344	6.7554871	0.41669026	1.4591471	3.50175482
Unc93b1	ENSMUSG00000036908	A	7.32717191	4.9077523	5.3833299	25.11743	7.2894661	16.27188	10.542084	6.6358842	8.8849758	0.53540676	1.4793148	2.76297372
Ctca3	ENSMUSG00000028255	A	6.50355381	8.3019745	3.1262646	1906.855	2342.0827	2771.3048	126.83332	583.33818	993.22392	0.24264054	94.993035	391.496967
Dbil5	ENSMUSG00000038057	A	0.54959522	0.9176925	1.0111211	2.202639	3.4820424	4.0416844	0.5557908	0.7606232	1.0089799	0.23908147	0.9382609	3.92443985
Chi3l4	ENSMUSG00000063779	A	0	0.0280621	0	4.982087	6.9210174	5.469535	0.169955	1.1148306	1.8319291	0.17940365	111.06504	619.079039
Pcdh17	ENSMUSG00000035566	A	1.92526902	2.5540349	3.8656321	31.06478	24.37954	43.33131	2.777832	11.206665	15.624088	0.29975598	3.5480901	11.836595
Ccl5	ENSMUSG00000035042	A	0.1108732	0.111079	0.0874198	6.03049	3.1610416	2.7062803	0.6054646	2.4286666	1.2976165	0.36407936	14.001741	38.4579376
Expi	ENSMUSG00000000983	A	0	0	0.0229298	9.124303	1.4321262	4.5047794	3.3350184	0.8618605	1.1712334	0.35641976	234.11078	656.840083
Scn4a	ENSMUSG00000001027	A	5.23549526	3.9036208	15.069835	45.67231	28.184128	67.900486	11.979159	15.602291	26.913045	0.38442211	2.2510061	5.85555824
Parm1	ENSMUSG00000034981	A	11.873146	5.0288026	6.3974489	38.51016	17.074206	23.581164	15.304668	14.264474	17.574664	0.59550924	2.0233916	3.3977502
Noxa1	ENSMUSG00000036805	A	0.04266918	0.1282452	0.0841081	15.35402	9.8980191	11.716908	4.0776933	6.4418525	9.0770272	0.53008204	76.842542	144.963489
2010109I03Rik	ENSMUSG00000063522	A	0.07520811	0.0565108	0.0741239	15.13535	15.009503	15.277229	0.8556292	6.4847217	6.756877	0.31036069	68.485416	220.66395
Dmbt1	ENSMUSG00000047517	A	0.06220492	0.0509894	0.098093	6.708481	0.9527004	1.5369278	1.9763972	0.3594719	0.9693983	0.35934204	15.643469	43.5336446
Pigr	ENSMUSG00000026417	A	3.83668248	2.9363499	1.6279387	741.956	212.86589	499.48731	402.37232	124.65828	156.38997	0.46992798	81.350187	173.112031
Tnf	ENSMUSG00000024401	A	0.36848067	0.5141937	0.5706933	8.318177	3.1380181	3.9287704	1.9643165	3.1200883	2.4190162	0.48771128	5.1627823	10.5857348
Ucp1	ENSMUSG00000031710	A	0.77692171	0.3243183	1.7016028	2.248788	1.2305758	2.7959325	0.314272	0.7600808	1.2034571	0.36298044	0.8126784	2.23890417
Defb1	ENSMUSG00000044748	A	0.04068741	0	0.0320807	8.805505	2.0036627	1.1459197	2.8143922	0.6990226	0.9243679	0.37120453	60.985285	164.290249
Gm11642	ENSMUSG00000086794	A	0.08063506	0.1211771	0.1907342	1.246494	1.4629614	2.3845547	0.5871172	0.3117005	0.333078	0.24183224	3.1382172	12.9768354
Ifit3	ENSMUSG00000074896	A	1.05726652	0.7333125	1.1061491	4.295462	6.6399166	3.6934732	0.5181436	2.0347366	1.5747242	0.28215504	1.4249195	5.0501294
misc_RNA	ENSMUSG00000092837	A	2.3356361	2.5906832	4.2093065	28.90974	14.701681	86.611413	8.7055313	2.1018886	6.8912695	0.1359108	1.9373264	14.2543961
misc_RNA	ENSMUSG00000065037	A	13.1841971	10.953533	16.226813	1368.473	807.05968	1117.5812	107.89831	185.2583	451.61758	0.22616105	18.451198	81.5843316
processed_trans	ENSMUSG00000092600	A	0	0.0541849	0.1705753	14.36789	8.4107538	18.177268	5.513174	4.3981591	5.7340872	0.38200637	69.609391	182.2205
processed_trans	ENSMUSG00000092171	A	0.02405385	0.0361478	0.056897	1.928035	0.8104735	2.8452992	0.6129902	0.5888851	0.7700312	0.35314726	16.839713	47.6846773
Il2rb	ENSMUSG00000068227	B	0.17525512	0.3877402	0.2226279	0.133786	0.151412	0.0959755	0.6380308	4.2738594	1.276921	16.2361888	7.8775818	0.48518663

Rgs1	ENSMUSG00000026358	B	0.10454046	0.2114832	0.0951077	0.069061	0.0416852	0.0679448	0.2927602	1.8133077	0.4318237	14.202656	6.1729457	0.43463319
Ptprc	ENSMUSG00000026395	B	0.03281226	0.056354	0.0480468	0.080512	0.0364477	0.0396053	0.2303789	1.2401948	0.3146397	11.4023625	13.010517	1.14103697
Plek	ENSMUSG00000020120	B	0.32087973	0.4859224	0.3425272	0.118708	0.0511799	0.1598898	0.6739554	2.0312602	0.4588107	9.59441406	2.7529327	0.28693078
H2-Eb1	ENSMUSG00000060586	B	2.62589518	1.8385494	1.646934	1.400912	0.8507429	0.630304	4.2367248	10.740138	3.4512374	6.3942959	3.0153754	0.4715727
Gstm7	ENSMUSG0000004035	B	1.07513408	2.4725028	1.4128459	13.79397	9.2042017	13.993058	26.094099	39.111244	88.635764	4.15885363	31.013333	7.45718313
Wif1	ENSMUSG00000020218	B	0.0417037	0.0391698	0	0.173107	0.1351125	0.0146818	0.7211725	1.9031573	1.8841469	13.9623926	55.747267	3.9926729
Cd53	ENSMUSG00000040747	B	0.06331089	0.180771	0.0599022	0.108743	0.1640927	0.0891544	0.3457328	1.9469849	0.496883	7.70628619	9.176797	1.19081964
Krt5	ENSMUSG00000061527	B	0	0	0	0.494015	0.4169552	0.1853499	5.2709865	0.3957286	1.2081973	6.27089847	#DIV/0!	#DIV/0!
Aldh1a1	ENSMUSG00000053279	B	11.0948809	5.8304315	9.933415	11.78425	5.733351	6.6924389	46.65194	27.701315	33.640394	4.46069775	4.0208029	0.9013843
Ccr7	ENSMUSG00000037944	B	0.01793702	0.0943442	0.0424282	0.041078	0.0929804	0.0505178	0.0653012	1.5485223	0.4815992	11.3525991	13.544247	1.19305256
Ccl4	ENSMUSG00000018930	B	0.32254022	0.4039237	0	0.307776	0.1393297	0.0757001	1.3699402	3.4402502	1.3878251	11.8552877	8.5317592	0.71965856
Ptn	ENSMUSG00000029838	B	1.34465399	1.8563892	1.8841172	2.379152	2.8553037	1.9962026	1.8283742	8.0333654	9.9794131	2.74403127	3.9017752	1.42191355
Retnlg	ENSMUSG00000022651	B	0.05835432	0.1753879	0.0460104	0.10023	0	0.0821745	0.5311093	3.4086548	0.6628691	25.2331469	16.452507	0.65201964
Ccl3	ENSMUSG00000000982	B	0.04631779	0.208817	0	0.238667	0.1200491	0.195674	1.0960544	4.0384524	0.6696347	10.4694147	22.749317	2.17293112
Crlf1	ENSMUSG00000007888	B	0.0346648	0.4037264	0.2186564	3.463272	3.5489245	4.173678	13.534959	10.042499	6.6404076	2.70143095	45.990378	17.0244506
Ovgp1	ENSMUSG00000074340	B	1.50568546	3.2552326	5.9413115	12.62915	8.8871035	5.4838801	25.128028	32.79376	32.47575	3.34803987	8.4466081	2.5228517
Tpsb2	ENSMUSG00000033825	B	0.03176314	0.0238666	0.0751325	0.036371	0	0.0447288	0.4047272	1.0368313	0.3608097	22.2240576	13.783551	0.62020857
lqgap3	ENSMUSG00000028068	B	0.14856047	0.1953476	0.2635538	1.846933	1.1413906	0.9115263	1.9605694	5.4555749	4.4106564	3.03262954	19.469208	6.41990976
C1qa	ENSMUSG00000036887	B	0.30703348	0.2819698	0.2420857	0.312511	0.1768415	0.096081	0.6830883	2.6814237	0.9159646	7.31163394	5.1504429	0.7044175
4732456N10Rik	ENSMUSG00000048699	B	0.07000676	0.1157256	0.0772772	7.968173	3.3023438	3.1349541	85.074074	2.0266138	9.4994274	6.70579383	367.28748	54.7716636
Cdk1	ENSMUSG00000019942	B	0.22968675	0.2426974	0.4187946	1.779411	1.4324769	0.9804418	1.9728944	5.7958206	3.9062378	2.78483663	13.100573	4.70425173
H2-Aa	ENSMUSG00000036594	B	0.38463675	0.5680602	0.3241887	0.789748	0.1718833	0.5229678	1.8590217	5.2010938	1.7394766	5.92725168	6.8914486	1.16267184
Cldn6	ENSMUSG00000023906	B	0.14135229	0.3009312	0.5944085	0.445111	0.7327297	0.2985783	0.3001861	1.3862555	3.7222465	3.66338402	5.2172565	1.42416314
Prc1	ENSMUSG00000038943	B	0.21270373	0.3529445	0.4070457	0.939993	0.8786304	0.486735	1.177681	2.5532637	1.9951817	2.48383382	5.8868733	2.37007535
C1qb	ENSMUSG00000036905	B	0.19565859	0.3430382	0.179982	0.298724	0.1690397	0.5051315	0.8903892	2.8012302	0.9092295	4.72902865	6.4018154	1.35372734
Tyropb	ENSMUSG00000030579	B	0.31453391	0.425409	0.0991998	0.180082	0.1630453	0.4429264	1.4886128	2.59382	0.6496203	6.02001346	5.6391514	0.93673401
Cdca5	ENSMUSG00000024791	B	0.31485711	0.5105173	0.4181127	1.423159	1.4603258	0.8167555	1.4177469	5.80081	3.3370031	2.85266849	8.4886768	2.97569689
Clec4e	ENSMUSG00000030142	B	0.02816945	0.0423326	0.0444214	0.04032	0	0	0.1794681	1.2885436	0.3636223	45.4274044	15.937865	0.35084253
Diap3	ENSMUSG00000022021	B	0.15077886	0.1307239	0.1737537	1.075758	1.4730046	0.9799692	0.9289465	4.0749429	2.8026899	2.21229044	17.14765	7.7510845
Plk4	ENSMUSG00000025758	B	0.52796763	0.4189266	0.3230371	0.640834	0.7663131	0.3747157	0.5612561	2.5796929	1.5615015	2.63906422	3.702917	1.40311745
Gzmb	ENSMUSG00000015437	B	0.02502075	0.0564012	0.1578243	0.128927	0	0.0352342	0.1821802	2.0203626	0.490926	16.4074225	11.258146	0.6861618
Calcb	ENSMUSG00000030666	B	0.14752359	0.055424	0.0290794	1.098012	2.3897499	2.1293618	0.6042059	4.3244937	7.8837699	2.28096612	55.219734	24.2089234
C1qc	ENSMUSG00000036896	B	0.20210962	0.0828347	0.1014088	0.115715	0.2857304	0.1293685	0.4013437	1.1363913	0.2846084	3.43311236	4.7167817	1.37390835
Ube2c	ENSMUSG00000001403	B	0.57312917	0.7792621	0.9898616	2.437587	1.6976783	2.0369163	3.2043052	6.933605	4.6502817	2.39594225	6.3136616	2.63514764
Kntc1	ENSMUSG00000029414	B	0.09684084	0.0651059	0.0843932	0.811245	0.7926238	0.3875813	0.7515033	2.6685772	1.6790271	2.5604996	20.69947	8.08415268
Pou2f3	ENSMUSG00000032015	B	0.51021296	0.8060602	1.3925285	2.876209	2.000552	1.2895822	9.3349908	5.0795641	3.6206269	2.92477733	6.6579928	2.27641016
Gad2	ENSMUSG00000026787	B	0.02369244	0.253683	0.1401053	0.349293	0.1381666	0.1084319	1.606486	0.8954958	0.6238957	5.245719	7.4874784	1.42735026
Racgap1	ENSMUSG00000023015	B	0.09752453	0.1025909	0.110216	1.29354	0.8594166	0.7187144	1.4142672	3.316098	2.2122802	2.41763269	22.371718	9.25356363
Kif4	ENSMUSG00000034311	B	0.09920846	0.1304528	0.1368895	1.192808	0.9160402	0.6112106	1.2189711	3.4461496	2.1578473	2.50839037	18.613977	7.42068587
Agt	ENSMUSG00000031980	B	0.5441054	0.7189885	0.4585959	0.773428	0.3404035	0.2906309	4.6447772	1.0314927	0.7750097	4.59341534	3.7470627	0.81574654
Ect2	ENSMUSG00000027699	B	0.33483624	0.3078708	0.2674811	2.408933	1.998333	1.0174822	1.9888933	8.1614901	4.9227551	2.77858794	16.560465	5.96002902
Cep55	ENSMUSG00000024989	B	0.2705659	0.3093713	0.2968101	3.003879	2.6221324	1.5737398	1.8843816	10.302286	5.5638166	2.46543004	20.245839	8.21188937
Chaf1a	ENSMUSG0000002835	B	2.44513615	2.2684493	2.2721782	2.58558	2.3280399	1.2297282	1.9756371	8.2623289	4.9083334	2.46547972	2.1681666	0.87940962
Ercc6l	ENSMUSG00000051220	B	0.38811894	0.734102	0.8072568	1.402233	1.5436107	0.6502046	0.7673939	6.1449121	3.178753	2.80615185	5.2299431	1.86374201
Ptprn	ENSMUSG00000026204	B	0.09764979	0.1406322	0.2887261	0.386697	0.4640061	0.3437759	0.7406295	1.2407651	0.756301	2.29195832	5.1947891	2.26652862
Kif18b	ENSMUSG00000051378	B	0.0993265	0.0373166	0.1018103	0.671042	0.617856	0.09791	0.9040159	2.1842694	1.5283171	3.32894181	19.360605	5.81584359

H2-Ab1	ENSMUSG00000073421	B	0.71572326	0.8354935	0.4131658	1.309823	0.4306371	0.5219384	2.256679	4.3201912	1.7685771	3.68876154	4.2483818	1.15170951
Tmem52	ENSMUSG00000023153	B	0.43223664	0.5683637	0.6816085	0.464008	0.4667897	0.1775303	1.9014253	0.943716	0.9299133	3.40608134	2.2441057	0.65885264
Mki67	ENSMUSG00000031004	B	0.50710046	0.6403444	0.5580987	6.494185	4.4084872	4.4135253	7.8076393	15.768076	9.9751497	2.19054801	19.671656	8.98024397
Sgol2	ENSMUSG00000026039	B	0.22268924	0.167327	0.2265588	0.345477	0.3909919	0.1416217	0.3138266	1.5025801	0.6676397	2.82891796	4.028782	1.42414238
5730590G19Rik	ENSMUSG00000046591	B	0.09193943	0.134711	0.1123613	0.431636	0.4765876	0.1229956	0.5439088	2.1639812	0.8734775	3.47294378	10.564138	3.04183972
Kif11	ENSMUSG00000012443	B	0.53745549	1.0068337	0.6559663	1.968516	1.2594314	0.8605217	2.0772668	5.4959218	3.0411773	2.59617132	4.8241515	1.85817917
Ncapg2	ENSMUSG00000042029	B	1.56337259	1.7721511	1.588489	2.839054	2.7849053	1.4298662	2.6991034	9.0407626	4.5770489	2.31320091	3.3137435	1.43253595
Emid1	ENSMUSG00000034164	B	0.4363342	0.6557163	0.2418996	0.413759	0.6714811	0.1920142	0.359897	1.8038114	1.7741973	3.08310201	2.9520636	0.95749787
Gsg2	ENSMUSG00000050107	B	0.10100904	0.1328205	0.209061	0.491566	0.7199525	0.2667016	1.1721451	1.5672534	0.8996663	2.46178864	8.2166243	3.33766441
Cnn2	ENSMUSG00000004665	B	29.43497	15.495405	14.467765	14.17709	20.669061	7.2421797	35.481297	37.311343	39.903797	2.67761702	1.8973058	0.70857999
Tesc	ENSMUSG00000029359	B	0.28652625	0.2808178	0.5795248	0.905822	1.0009427	0.2631431	4.9661707	2.2151751	1.4408431	3.97352845	7.5180254	1.89202758
Tmem48	ENSMUSG00000028614	B	1.90885493	2.1579976	1.6115919	1.744128	1.1521524	0.7487257	2.3243813	3.9065411	2.7048014	2.45149755	1.5736218	0.64190223
Ncaph	ENSMUSG00000034906	B	0.62221379	1.0743165	0.6628251	1.766038	1.6984701	0.8575584	1.8073571	4.4948456	2.9324537	2.13662979	3.9140591	1.83188454
Ccl6	ENSMUSG00000018927	B	0.10400166	0.1116372	0.0117146	0.467851	0.192541	0.2301437	1.3251934	1.869739	0.6750828	4.34571743	17.022023	3.91696494
Loxl2	ENSMUSG00000034205	C	202.841714	155.25745	170.78156	1.598661	2.4443205	2.1613208	1.7278954	15.34459	3.7746143	3.36010379	0.0394174	0.011731
Dennd2a	ENSMUSG00000038456	C	66.3866353	68.540094	62.655201	1.414818	1.6398895	1.3532803	3.6615807	7.2604267	3.4086703	3.25107044	0.0725303	0.02230967
Thy1	ENSMUSG00000032011	C	105.722551	135.20014	91.259262	0.971757	0.7420208	0.6335252	2.1217435	5.1469012	2.3017899	4.07720516	0.0288108	0.00706632
Plekhg1	ENSMUSG00000040624	C	2.02158386	2.6285348	2.2612335	2.943175	1.4514821	2.5497362	0.6994042	0.880151	0.8713593	0.35293427	0.3546216	1.00478073
Ramp3	ENSMUSG00000041046	C	321.844789	232.86663	191.46495	1.714197	1.8236312	1.7075654	1.3625083	12.71177	3.6638583	3.38166006	0.023772	0.0070297
Ptx3	ENSMUSG00000027832	C	47.4043509	48.019428	72.235534	0.655265	1.0047394	0.85783	0.9744558	5.0663498	1.8109601	3.11845943	0.0468317	0.01501757
Vcan	ENSMUSG00000021614	C	23.9934016	14.150203	12.746389	0.251038	0.2225677	0.2216955	0.3007821	1.7524859	0.4111411	3.54437571	0.0484262	0.01366283
Ccl7	ENSMUSG00000035373	C	135.096436	172.0352	129.39446	2.307745	4.1329247	2.6197355	3.0638577	29.012491	4.6655873	4.05521997	0.0841689	0.0207557
Bach2	ENSMUSG00000040270	C	1.47326299	1.6405518	2.0367577	0.306812	0.3268074	0.2172773	0.8758026	1.0090245	0.8840547	3.2540755	0.5375872	0.16520428
Xylt1	ENSMUSG00000030657	C	2.64946285	3.2496653	6.8138708	0.129384	0.1817743	0.098761	0.1418469	1.1881695	0.2816496	3.93167041	0.1267731	0.03224407
Tnc	ENSMUSG00000028364	C	8.65918425	10.154982	18.173091	0.40423	0.2715399	0.2501633	1.0530271	1.7686196	0.5832821	3.67729268	0.0920568	0.02503385
Dio2	ENSMUSG00000007682	C	171.708696	172.98748	151.32521	2.610353	1.7401227	1.8307117	3.888528	14.169126	4.2544372	3.60967728	0.0449821	0.01246153
P2ry14	ENSMUSG00000036381	C	190.04936	126.9117	76.403423	0.980051	0.7715949	0.748608	0.6773753	6.7494118	1.4822322	3.56324598	0.0226483	0.00635607
S1pr3	ENSMUSG00000067586	C	1.83568834	6.6171787	2.1398755	2.912892	2.5224758	3.2869802	0.7777601	1.1690701	0.5556253	0.28690159	0.2362424	0.82342676
Has2	ENSMUSG00000022367	C	28.3366469	25.05452	28.997721	0.345186	0.3038485	0.330172	0.2896094	2.5319895	0.5620741	3.45552596	0.0410695	0.01188517
Tmem200a	ENSMUSG00000049420	C	52.4018602	130.63977	69.916921	0.46792	1.2460376	0.6092939	0.5250642	11.986532	2.6808719	6.53931319	0.0600591	0.00918432
Cdr2l	ENSMUSG00000050910	C	50.0931119	85.618512	71.470683	0.92782	1.4414971	1.3368237	1.8327578	5.5930119	1.9012454	2.51663777	0.0450184	0.01788831
A2m	ENSMUSG00000030111	C	318.714634	150.42621	96.927827	1.157028	0.6891895	0.8130877	1.853128	6.0628459	1.5220311	3.54904991	0.0166729	0.00469785
Fn1	ENSMUSG00000026193	C	313.06438	280.37365	207.72723	13.13613	9.7219501	4.8121441	50.952525	50.01773	23.937495	4.51415801	0.1559076	0.03453747
Ccl8	ENSMUSG00000009185	C	20.8988391	6.7821245	18.722559	0.159008	0.3599122	0.1955464	0.7583119	2.0576708	0.5735982	4.74421395	0.0730458	0.01539681
Mmrrn1	ENSMUSG00000054641	C	9.56113724	25.903812	6.4206936	0.177286	0.1971223	0.0688499	0.1681074	1.8362962	0.3646467	5.34462901	0.05656	0.01058258
Rad18	ENSMUSG00000030254	C	5.6751325	10.462884	14.618143	0.705192	0.8630593	0.6050512	0.9320168	3.5094052	1.5973224	2.77860244	0.1963426	0.07066236
Larp6	ENSMUSG00000034839	C	49.1331868	44.249513	54.73342	0.47453	0.4522504	0.757622	0.2911524	3.9470711	0.961012	3.08669389	0.0351024	0.01137218
Scube1	ENSMUSG00000016763	C	72.3435059	55.893695	53.61545	0.312427	0.2928387	0.4197642	0.2975565	2.1042384	0.5784125	2.907436	0.016388	0.00563659
Tnfaip8l3	ENSMUSG00000074345	C	20.2033398	23.040536	13.377397	0.127814	0.330634	0.2694585	0.1161041	1.8286431	0.5434037	3.41823072	0.0439437	0.0128557
Crtac1	ENSMUSG00000042401	C	74.2816546	27.718803	27.856721	0.12424	0.2812158	0.2482826	0.0987506	1.5436749	0.3081226	2.98368314	0.0150207	0.00503429
Nppc	ENSMUSG00000026241	C	111.370696	96.284109	156.95675	2.90189	3.4384903	2.874138	2.9721754	17.941624	5.3043394	2.84530767	0.071907	0.02527215
Loxl1	ENSMUSG00000032334	C	47.3998847	26.933599	33.511583	0.505215	0.4465931	0.3970498	0.6748176	2.5521165	0.9220306	3.07590955	0.0384715	0.01250737
Twist2	ENSMUSG0000007805	C	106.812022	252.76872	136.98801	1.100491	1.8682126	2.3308127	1.5550434	13.656345	2.9498332	3.42695837	0.0365734	0.01067227
Chst13	ENSMUSG00000056643	C	22.3707335	12.57864	13.690657	0.282983	0.6126792	0.4841875	0.7041139	2.1136648	0.9320536	2.71756659	0.0770935	0.02836859
Nts	ENSMUSG00000019890	C	5.79255912	22.261143	5.042995	0.155458	0.1563904	0.0424848	0	1.7752558	0.2803973	5.80146271	0.0621105	0.01070601
Slc4a4	ENSMUSG00000060961	C	9.13042104	13.208917	19.846047	13.3866	6.9190843	9.8820416	3.8926535	5.3267725	5.1469393	0.47590086	0.3405531	0.71559683

Bdkrb2	ENSMUSG00000021070	C	80.8001658	172.22009	126.31751	0.79802	1.5326262	1.5167066	1.0379394	8.1817264	2.3335288	3.00289474	0.0304562	0.01014229
Lyve1	ENSMUSG00000030787	C	13.418762	53.532677	13.016067	0.69347	0.4938266	0.4216211	1.1643253	3.6591566	0.7729659	3.47839191	0.069984	0.02011965
Mn1	ENSMUSG00000070576	C	12.555831	12.303843	9.7426517	0.828335	1.0997808	0.7631099	3.4431803	2.3516771	1.1244983	2.57107989	0.1999679	0.07777586
Bdkrb1	ENSMUSG00000041347	C	17.1563436	24.327801	20.405804	0.349181	0.8247316	0.5227723	0.3378776	4.7151111	0.848876	3.4784681	0.0953606	0.02741455
Npr2	ENSMUSG00000028469	C	48.4958462	52.265655	46.524873	1.586105	0.9767275	0.97529	5.5340876	3.9020851	1.8563829	3.19167985	0.0766707	0.02402207
Serpinh1	ENSMUSG00000070436	C	1315.90053	728.64921	881.6573	18.61976	26.171088	18.958924	19.626835	89.942704	38.71502	2.32604047	0.0506747	0.02178581
Mafb	ENSMUSG00000074622	C	20.3307886	11.941077	15.749501	8.109707	7.6789594	11.322187	3.3158524	2.8597841	4.3352233	0.38769933	0.2188788	0.56455815
Gm12473	ENSMUSG00000086043	C	34.6215456	26.290621	30.824931	0.771833	0.4764641	0.8629033	3.346264	2.8161314	1.3921396	3.57831344	0.0823498	0.02301359
Osr1	ENSMUSG00000048387	C	24.3590079	27.852651	22.755255	0.242546	0.4575004	0.2734244	0.2891771	1.675498	0.6379853	2.67358857	0.0347175	0.01298534
Ccl2	ENSMUSG00000035385	C	228.807994	209.1253	215.06818	3.320088	8.1614367	5.7513488	3.2915711	50.817959	11.043088	3.78071691	0.0997741	0.02639025
Ddit4l	ENSMUSG00000046818	C	100.867124	182.14104	91.997678	1.678779	2.9273302	1.7739833	1.8186796	14.417753	3.611149	3.11086093	0.0529261	0.01701332
Ctsl	ENSMUSG00000021477	C	230.212064	227.67432	330.12565	504.8686	366.9922	771.59189	54.674735	161.62273	183.23002	0.24310252	0.5070068	2.08556798
Htr2a	ENSMUSG00000034997	C	5.07531318	4.5583153	3.7851527	0.191441	0.2166621	0.1177162	0.2825909	1.1540578	0.3206338	3.34199169	0.1309569	0.0391853
Cfh	ENSMUSG00000026365	C	22.2596463	26.645947	28.527621	56.89242	38.148192	73.427389	9.1698092	20.343682	27.218383	0.33675164	0.7326556	2.17565547
Oxtr	ENSMUSG00000049112	C	78.872424	64.871887	93.823346	0.722072	1.6523627	1.5905903	1.236157	8.7056982	2.2899114	3.0849156	0.0514875	0.01669009
Slc16a10	ENSMUSG00000019838	C	16.9857124	17.091954	24.080676	3.175227	2.8777008	2.3180298	4.6856032	8.2136622	7.7464107	2.46634584	0.3549908	0.14393391
Fam71a	ENSMUSG00000091017	C	4.73270749	5.2625802	10.831608	3.955351	1.2348824	3.3322975	2.1103632	1.0095463	1.0332277	0.48731265	0.1994122	0.40920794
Trim35	ENSMUSG00000022043	C	32.437577	29.876684	32.38615	4.10269	3.7282409	1.9234061	7.8911962	10.392465	10.323127	2.9327249	0.3020767	0.10300206
Rasl11a	ENSMUSG00000029641	C	10.1774904	10.441034	10.35995	5.700693	3.3483664	4.5702453	2.8104457	2.0029542	1.9523224	0.49677443	0.2184008	0.43963768
Pdpn	ENSMUSG00000028583	C	28.6938444	52.671825	40.148645	4.666263	3.3914806	2.869267	17.285622	10.011933	5.2506294	2.9786906	0.2678547	0.08992365
Fkbp10	ENSMUSG00000001555	C	64.9041329	30.479477	30.631093	0.783567	0.7857703	1.1709867	0.6937616	3.8654788	1.8873879	2.35250596	0.0511577	0.02174606
Gm889	ENSMUSG00000071342	C	1.60871257	2.4615039	3.0211375	2.763135	1.1371505	2.3889544	1.0116035	0.9296482	0.7853282	0.4335309	0.3844936	0.88688846
Mmp19	ENSMUSG00000025355	C	400.272417	1014.1899	744.62633	5.027673	12.539669	9.7140386	5.0378446	65.767693	16.277846	3.19204456	0.0403334	0.0126356
Angptl4	ENSMUSG00000002289	C	19.6366469	22.856176	22.760196	0.45503	0.5635608	0.7390843	0.3684992	2.6406863	0.9446127	2.24944761	0.0605918	0.0269363
Dclk1	ENSMUSG00000027797	C	9.29738115	6.5466959	6.5955784	0.359787	0.5940929	0.4352099	0.323477	1.6581591	1.0452209	2.17902155	0.1348887	0.06190336
Col14a1	ENSMUSG00000022371	C	33.4557833	25.3326	18.169513	1.339168	0.9422813	0.7833564	1.2198991	4.5603198	2.6370733	2.74643548	0.1093753	0.03982445
Smoc2	ENSMUSG00000023886	C	152.646914	192.09891	139.44242	1.920085	1.6678737	2.1783266	3.4239972	7.5794821	2.709236	2.3780846	0.028321	0.01190918
Fbn1	ENSMUSG00000027204	C	103.827449	45.621965	69.012267	1.061415	0.6496723	0.9890371	1.1564928	4.9139879	1.3454992	2.74653321	0.0339464	0.01235971
Zeb2	ENSMUSG00000026872	C	25.9938248	25.595302	17.620666	0.425991	0.420304	0.4943284	0.3646397	2.2960056	0.5516375	2.39611067	0.0464137	0.01937043
Lphn1	ENSMUSG00000013033	C	15.22338	18.262805	13.305796	0.495479	0.5034058	0.3635244	0.8010767	1.4646293	0.7972084	2.2481607	0.0654581	0.02911629
Ccdc80	ENSMUSG00000022665	C	55.1382736	37.081291	50.788382	2.380677	2.7102614	2.9797091	2.4520898	7.3868557	7.2095686	2.11240982	0.1192138	0.05643496
Pvrl1	ENSMUSG00000032012	C	27.5046271	49.145546	26.78984	1.732292	1.6193558	1.0775364	3.5779997	4.127774	2.9722634	2.41083634	0.1032293	0.04281886
Col6a3	ENSMUSG00000048126	C	654.802779	220.73194	268.52504	5.838362	6.142494	7.8929307	5.0954298	31.824029	7.5278932	2.23648132	0.0388506	0.01737128
Col6a6	ENSMUSG00000043719	C	66.902753	30.143411	20.782722	0.361293	0.2259664	0.2689277	0.3022836	1.6618841	0.4801687	2.85490853	0.0207448	0.00726636
Col6a4	ENSMUSG00000032572	C	1150.42819	590.2537	524.97615	8.192456	7.1151334	9.7004459	6.8965395	41.63397	10.487284	2.35995326	0.0260489	0.01103787
Adam12	ENSMUSG00000054555	C	38.719942	31.888264	17.079978	0.308895	0.219868	0.2914774	0.3520682	1.4909317	0.3328869	2.65274369	0.0248139	0.00935406
Spon2	ENSMUSG00000037379	C	338.807094	248.1417	212.31493	2.72417	2.7542054	4.2658743	2.5117174	16.485309	4.225639	2.38321731	0.0290551	0.01219153
Cmtm3	ENSMUSG00000031875	C	85.2296573	83.292772	78.625926	2.979106	2.7883175	1.9168627	5.3153002	7.7230748	4.7838744	2.31931099	0.0721115	0.0310918
Fstl1	ENSMUSG00000022816	C	226.352676	167.55599	150.69842	3.139225	3.152919	2.8829109	2.6896038	15.299861	3.419356	2.33337263	0.0393106	0.01684711
Mpdz	ENSMUSG00000028402	C	8.77917526	7.6820416	8.0228386	0.376708	0.38261	0.2227269	0.6948112	1.0063116	0.5030619	2.24448581	0.0900253	0.04010955
Pdk4	ENSMUSG00000019577	C	37.4398371	105.85379	41.941605	0.607488	1.3095639	0.88227	0.9013278	4.6744721	1.5444347	2.54355727	0.0384389	0.01511225
Mfap2	ENSMUSG00000060572	C	46.2839259	24.700197	25.854297	0.882368	0.9348737	0.7388111	2.3278493	2.4787522	0.9989262	2.27128668	0.0599507	0.02639502
Snai2	ENSMUSG00000022676	C	32.1777942	21.618571	30.908144	0.530084	0.9055399	0.6641933	0.5723743	2.8211464	0.8659045	2.02847398	0.0502857	0.02478991
Des	ENSMUSG00000026208	C	107.854521	135.04396	157.06452	3.341267	3.5441323	3.7594789	3.2743335	15.665194	4.2698784	2.18033541	0.0580289	0.02661466
Mfap4	ENSMUSG00000042436	C	293.919882	227.01536	125.07442	2.657005	2.1163999	2.2422576	2.5516065	11.655524	3.1480792	2.47378082	0.0268652	0.01086
Fam65b	ENSMUSG00000036006	C	11.4030001	15.430346	7.3952074	0.405833	0.3195129	0.3134385	0.835258	1.2178011	0.4172718	2.37809725	0.0721716	0.03034848

Igfbp6	ENSMUSG00000023046	C	537.041074	443.493	489.80269	9.663397	10.750436	11.951365	10.279831	45.085699	12.190895	2.08731689	0.0459462	0.0220121
Tmem47	ENSMUSG00000025666	C	21.8175691	20.206421	13.765674	1.005672	1.2263054	0.7245712	0.9689049	3.6553556	1.6551185	2.12388802	0.1125545	0.05299457
Lgals1	ENSMUSG00000068220	C	719.434032	628.05192	587.11166	18.63739	14.02353	13.864482	19.051954	64.421571	28.211709	2.40052175	0.0577305	0.02404914
Msc	ENSMUSG00000025930	C	31.3053746	23.429458	58.474048	0.118307	0.2677856	0.4364773	0.4513656	1.730661	0.3414195	3.06776084	0.0222902	0.00726594
Fam38b	ENSMUSG00000041482	C	1.56053605	2.7420912	6.0196958	0.454264	0.3567297	0.2736244	1.3337331	0.9058541	0.4995505	2.52544101	0.2653606	0.10507495
Mrgprf	ENSMUSG00000031070	C	16.8417935	13.360945	11.224955	0.186458	0.2652854	0.2227526	0.1693755	1.0630716	0.2402215	2.18336267	0.0355479	0.01628127
Tmem100	ENSMUSG00000069763	C	58.0481135	94.279502	62.075509	1.517457	2.0296239	2.0923573	0.9868354	8.3567022	1.9076116	1.99508341	0.0524766	0.02630297
Lhfp12	ENSMUSG00000045312	C	13.4743953	14.952536	12.373442	0.521518	0.7347202	0.7291795	0.8944046	1.6672139	0.9094268	1.7482698	0.0850739	0.04866175
Rcn3	ENSMUSG00000019539	C	228.52515	118.93911	126.32871	3.472422	3.1599167	3.7161892	3.4552832	15.271834	4.0798074	2.20388103	0.0481369	0.02184188
Ppic	ENSMUSG00000024538	C	141.807342	113.66338	103.78353	6.965889	3.7898534	3.1857637	17.225453	16.032621	7.4359799	2.91891369	0.1132737	0.0388068
Foxl2	ENSMUSG00000050397	C	31.6498994	37.407184	29.317562	0.411101	0.2919288	0.4560033	0.3587939	2.0983437	0.4943301	2.54649117	0.0300023	0.01178183
Col6a2	ENSMUSG00000020241	C	1267.81366	547.51429	708.98673	11.44972	10.509437	16.102549	11.634958	53.030285	14.239335	2.07307015	0.0312578	0.01507803
Vgll3	ENSMUSG00000091243	C	65.3197353	40.887246	79.241008	0.75823	0.9411672	1.3686186	0.7581977	3.9128852	1.8308262	2.11925535	0.0350606	0.01654381
Atp8b2	ENSMUSG00000060671	C	32.9791511	31.587114	27.429719	1.471691	2.2833842	1.1704385	2.1189588	4.4482663	3.863586	2.1177102	0.1133833	0.05354053
Mdk	ENSMUSG00000027239	C	63.7414074	74.667939	38.831632	1.848634	1.6245182	1.6850172	2.0398238	6.00411	3.1382084	2.16785076	0.06309	0.02910258
Nrg1	ENSMUSG00000062991	C	26.4718536	26.39069	37.875564	0.525644	0.5816753	0.7038939	0.6313452	2.1951078	0.8322162	2.02001003	0.0403212	0.01996089
Fbln2	ENSMUSG00000064080	C	279.887525	90.258241	206.46873	1.669177	1.3533727	2.5067393	2.2394114	8.901272	2.4836948	2.46403795	0.0236282	0.00958923
Selm	ENSMUSG00000075702	C	41.5643495	24.336882	27.917683	1.110987	1.0555562	1.3831506	2.3112042	3.4469695	1.4101278	2.01941412	0.0764057	0.03783559
Cgref1	ENSMUSG00000029161	C	8.33552747	6.7048906	6.4880269	0.55066	1.4541484	1.0534177	0.5349487	3.3736261	2.7865187	2.18920827	0.3109883	0.14205513
Mdk-ps1	ENSMUSG00000081677	C	50.8427891	67.021139	35.904773	1.202341	1.1458888	2.0233872	1.8107354	4.8896738	2.8534722	2.18543443	0.0621315	0.02842982
Lgr6	ENSMUSG00000042793	C	11.0767478	3.959066	6.7428902	0.197285	0.4059579	0.3705471	0.7869009	0.9202954	0.213504	1.97239598	0.0881917	0.04471296
Col6a1	ENSMUSG00000001119	C	2219.77791	1077.5481	1322.8337	21.32997	18.918101	29.330878	19.436507	97.779723	25.876242	2.05654841	0.0309713	0.01505986
Cplx2	ENSMUSG00000025867	C	19.6019318	17.521842	12.280313	0.569183	0.4481181	0.5275186	1.3506677	1.4449684	0.5802659	2.18530496	0.0683324	0.03126906
Col5a3	ENSMUSG00000004098	C	50.549332	15.555239	23.388125	0.666633	0.5317772	0.5489547	0.569547	2.7890971	0.7203769	2.33438373	0.0455794	0.01952523
Syde1	ENSMUSG00000032714	C	13.2292502	10.345754	13.391614	1.019368	1.7899285	0.744569	1.060668	4.3380219	3.5546557	2.51932582	0.2422008	0.09613716
Gli3	ENSMUSG00000021318	C	10.9365344	11.728273	12.608466	0.278645	0.3784262	0.2741405	0.2594453	1.128792	0.3877099	1.9071356	0.0503482	0.02639993
Dcbld2	ENSMUSG00000035107	C	32.9032652	31.673217	45.537419	1.318258	2.1552024	1.4933417	0.857401	5.9551042	2.6956519	1.91434179	0.0863484	0.04510604
Fzd2	ENSMUSG00000050288	C	32.125113	18.252721	15.483047	1.780487	2.6867428	1.1430138	2.1183474	5.85942	4.60507	2.24283262	0.1910518	0.08518325
Col4a3	ENSMUSG00000079465	C	15.8813638	8.1265441	10.348301	0.262081	0.2302038	0.2838209	0.2487306	1.0373344	0.3809905	2.14797489	0.0485227	0.02258997
Rspo1	ENSMUSG00000028871	C	27.3565037	25.01032	17.520777	1.327487	0.8066454	1.0299205	4.532133	2.559833	1.1409383	2.60201199	0.1178021	0.04527346
Fgfr1	ENSMUSG00000031565	C	11.4135491	16.816068	18.718545	0.436365	0.7945204	0.5174202	0.4930284	2.2689401	0.7523724	2.01014055	0.0748558	0.03723907
Igf1	ENSMUSG00000020053	C	41.4063487	35.792553	39.795251	0.772708	0.5274813	0.7944059	0.7571608	3.083163	0.8388123	2.23390936	0.0399946	0.01790342
Gdf10	ENSMUSG00000021943	C	23.9146419	29.302174	21.010522	0.324147	0.2152199	0.3082768	0.5084185	0.9888939	0.3897722	2.22627043	0.025423	0.01141956
Thbs2	ENSMUSG00000023885	C	45.5180605	51.703191	81.619779	1.706764	3.1030057	3.3043939	1.6562511	11.284397	2.9486425	1.95821676	0.0888459	0.04537081
Mfap5	ENSMUSG00000030116	C	45.063679	27.860108	31.956344	0.477863	0.3483241	0.4482246	0.4248875	2.0263572	0.4966953	2.31317701	0.0281077	0.01215113
Hsd11b2	ENSMUSG00000031891	C	1014.88461	610.38195	579.80441	7.090363	4.7847844	6.6074537	4.9005991	27.966511	8.9362397	2.26176769	0.0189578	0.00838186
Gfpt2	ENSMUSG00000020363	C	33.1568581	58.405594	67.571739	1.387883	1.6776377	1.948084	1.4785567	5.4647787	2.0118127	1.7861696	0.0562742	0.03150551
Tfpi2	ENSMUSG00000029664	C	7.35096575	10.193134	10.184126	1.101959	0.6611329	0.3592046	4.0944711	2.4800225	0.9099779	3.52659007	0.2699225	0.07653923
Tmem45a	ENSMUSG00000022754	C	17.8922901	9.4162403	9.5199407	0.41931	0.1318199	0.3151279	0.7406295	1.4155207	0.4831923	3.04683338	0.0716658	0.02352141
Col5a1	ENSMUSG00000026837	C	310.003644	143.78176	174.11747	3.702776	3.5388432	4.1298513	3.3383393	14.739006	4.3842822	1.97526153	0.0357725	0.01811024
Qpct	ENSMUSG00000024084	C	35.2950201	29.430168	28.308762	0.348408	0.716925	0.7011313	0.3356699	3.2552508	0.8378886	2.50716074	0.0476042	0.01898731
Mdfic	ENSMUSG00000041390	C	4.04662702	7.2707845	4.302628	0.916972	0.842168	0.4608092	1.4849536	2.1735625	1.0280507	2.11111488	0.3000355	0.14212184
Actg2	ENSMUSG00000059430	D	3.90931941	2.2207393	1.0910102	0.323043	0.313373	0.2837681	1.5161452	4.3910052	1.5537756	8.10808285	1.0332163	0.1274304
Cd44	ENSMUSG00000005087	D	22.4342898	33.207352	29.932441	3.752545	6.7876115	4.0772967	24.485387	20.667206	15.550944	4.152812	0.7093682	0.17081636
Dlgap1	ENSMUSG00000003279	D	3.08357418	1.8188704	1.5417761	0.441841	0.2475072	0.2001486	2.075821	0.9610029	1.181076	4.74189573	0.6545244	0.13803012
Pcp4	ENSMUSG00000090223	D	1.05165221	2.4537894	0.9601181	0.316899	0.5738382	0.38972	1.4105469	2.7339307	1.4289619	4.3526948	1.2480943	0.28674059

Cd83	ENSMUSG00000015396	D	0.99875056	4.0024185	1.1374736	0.326754	0.2054459	0.3795155	0.6060057	2.1720924	0.7530719	3.8731042	0.5752363	0.14852074
Chst1	ENSMUSG00000027221	D	2.2770377	2.9742653	2.2650873	0.629104	1.235251	0.5592772	1.6145724	2.4450141	4.1560184	3.3897906	1.0930253	0.32244627
Sdc3	ENSMUSG00000025743	D	7.68355547	10.166819	5.815339	1.817981	2.0882001	0.9259965	5.2623899	4.954038	4.3618817	3.01692317	0.6160097	0.20418476
Fcer1g	ENSMUSG00000058715	D	0.62088993	1.0996824	1.0490381	0.355482	0.2298939	0.3122631	1.049472	2.7810613	0.5495787	4.87959446	1.5814904	0.32410283
Nkain1	ENSMUSG00000078532	D	5.86689545	7.0094695	6.4345389	2.133207	3.6393868	2.0556506	4.0490843	6.5266029	7.0635513	2.25328142	0.9134341	0.40537951
Cdc7	ENSMUSG00000029283	D	0.66049498	0.7370289	0.6490298	0.400733	0.4343648	0.3054088	0.4575893	1.2152	0.9060389	2.2611246	1.2600833	0.55728167
Tgfb1i1	ENSMUSG00000030782	D	15.0855423	8.6143451	10.142554	1.009086	1.4721872	0.6704743	1.4596723	2.7517544	4.157692	2.65539029	0.2472965	0.09313002
Prex1	ENSMUSG00000039621	D	2.34664858	2.9212426	2.3927607	0.826301	0.5436987	0.3623581	2.0568774	1.6962581	1.0802389	2.79005563	0.6309351	0.22613711
S100a4	ENSMUSG00000001020	D	10.6377832	7.8569014	12.057088	3.460516	7.0495585	3.4896866	8.2516476	12.876306	11.110167	2.30276213	1.0551964	0.45823074
Mtap1b	ENSMUSG00000052727	D	17.8332248	22.486637	21.687442	6.310086	9.954276	4.7814348	6.4971284	20.509838	23.09191	2.38046945	0.8079512	0.33940835
Siva1	ENSMUSG00000064326	D	5.12682222	4.0227084	3.9350108	2.311864	1.8814849	1.5333636	6.1940117	4.8911915	4.591536	2.73747635	1.1981115	0.43767007
Phldb2	ENSMUSG00000033149	D	5.13280331	3.6298813	2.8354823	0.814937	1.4393481	1.3704367	0.5103428	3.0915058	2.7950108	1.76478634	0.5515406	0.3125254