

CD29 CD44 Sca-1 CD51 ckit CD11b CD45 CD31 CD34



WT isolate 1

WT isolate 2

WT isolate 3

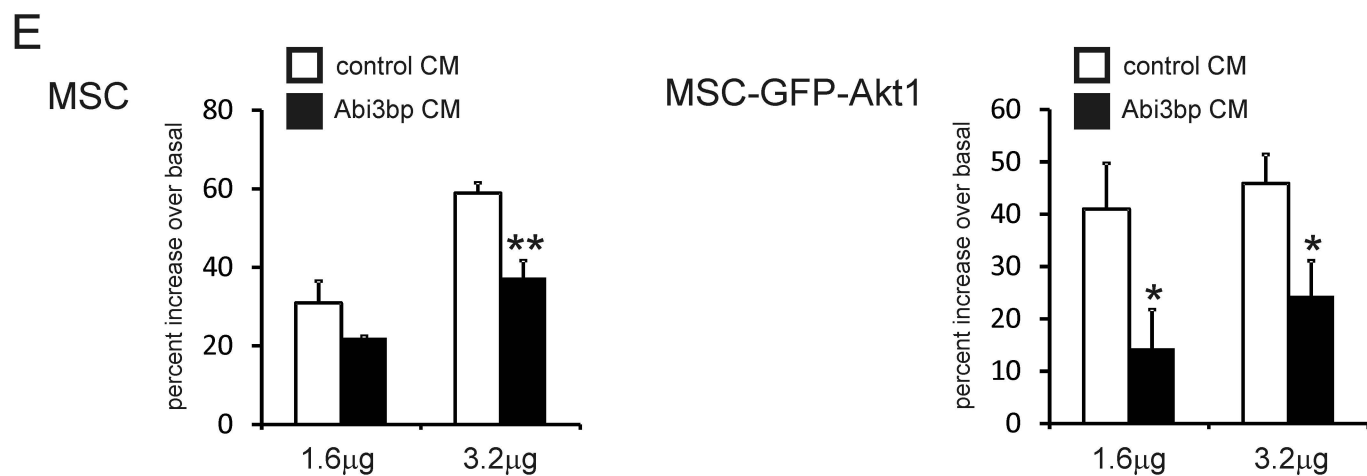
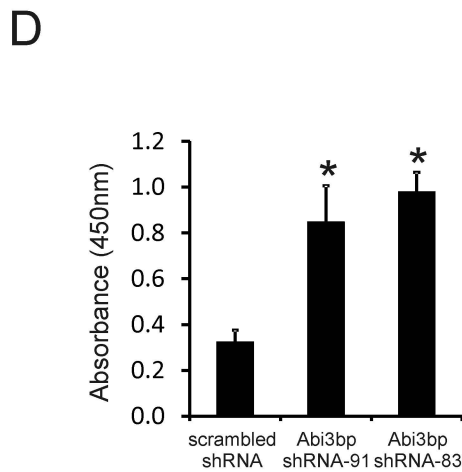
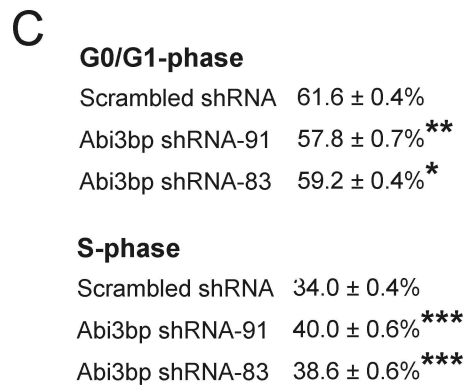
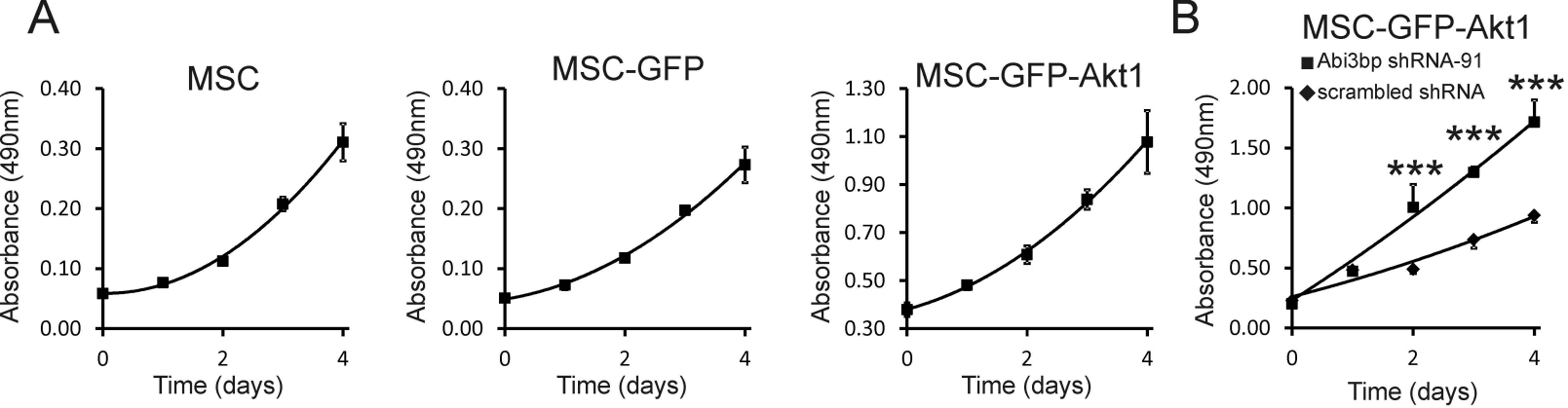
KO isolate 1

KO isolate 2

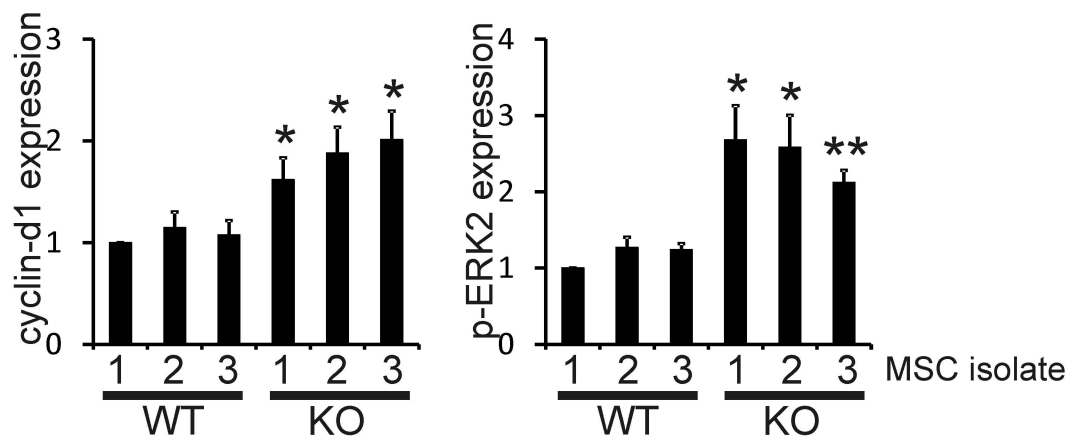
KO isolate 3

Lung

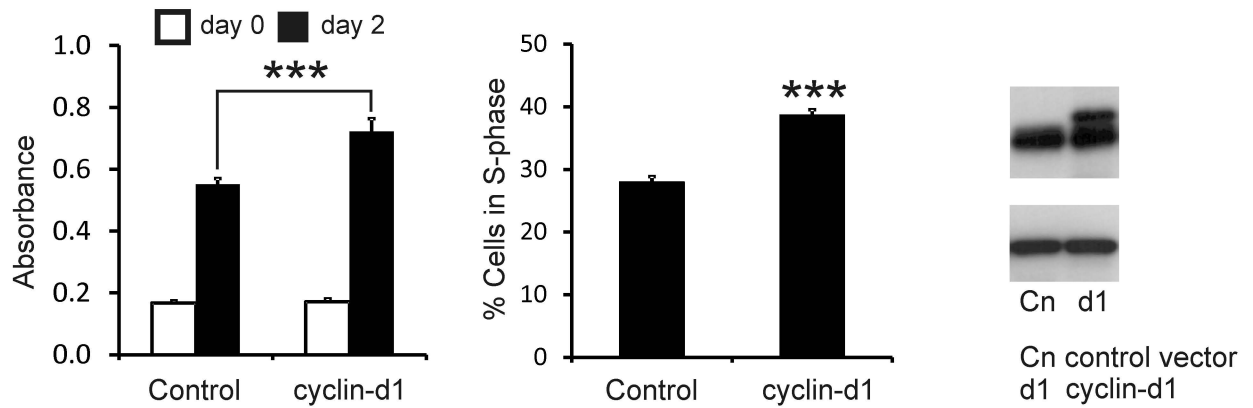
Liver



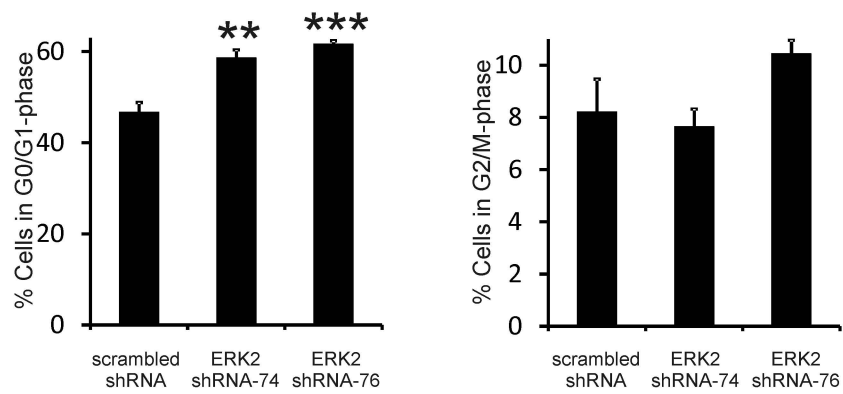
A



B

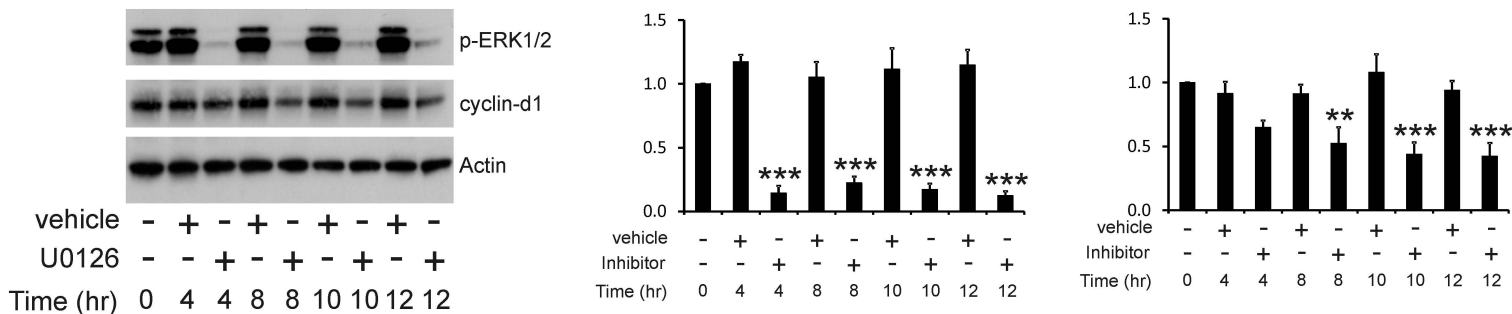


C

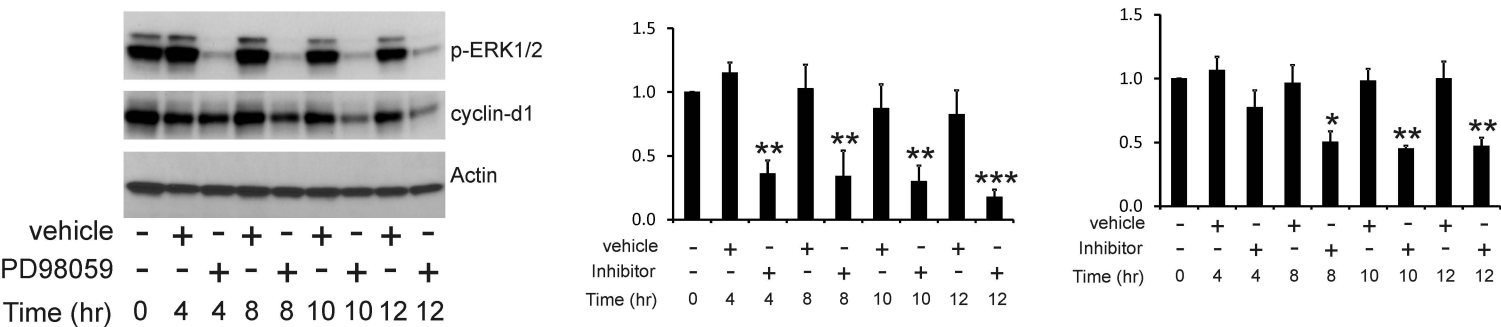


A

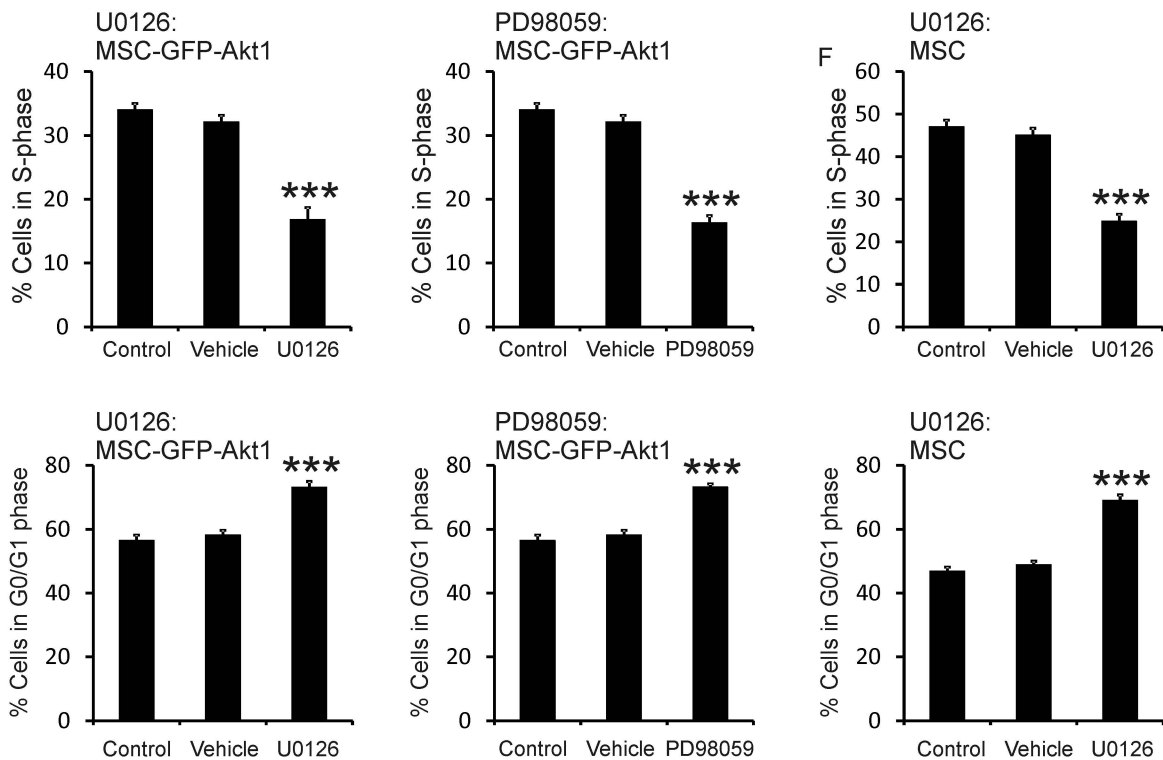
## U0126



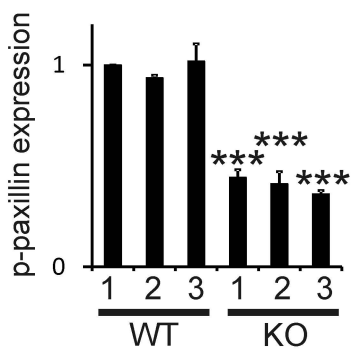
## PD98059



B

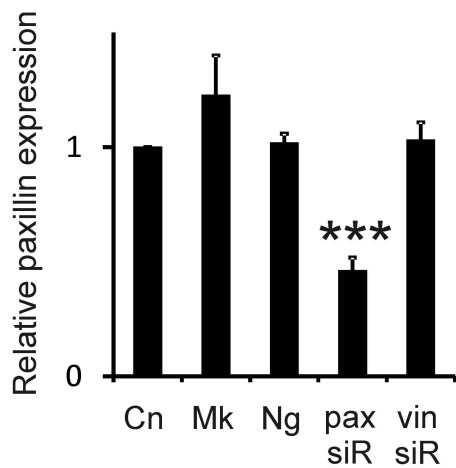


C

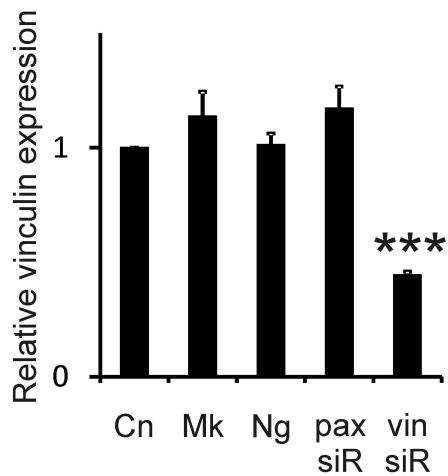


A

paxillin antibody

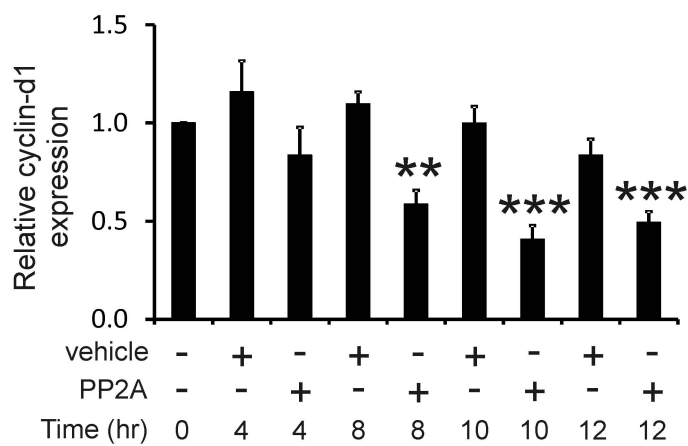
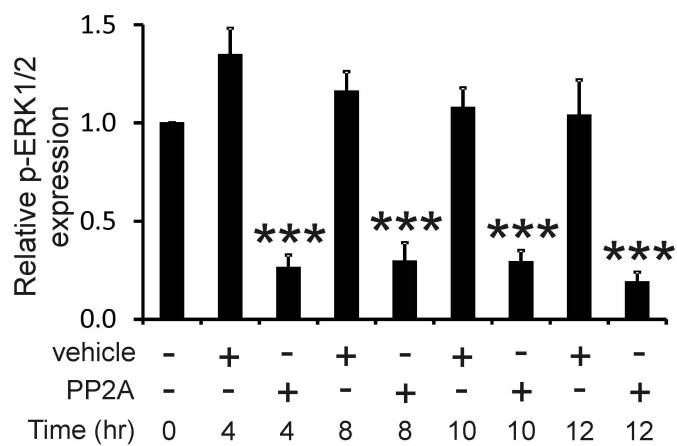


vinculin antibody

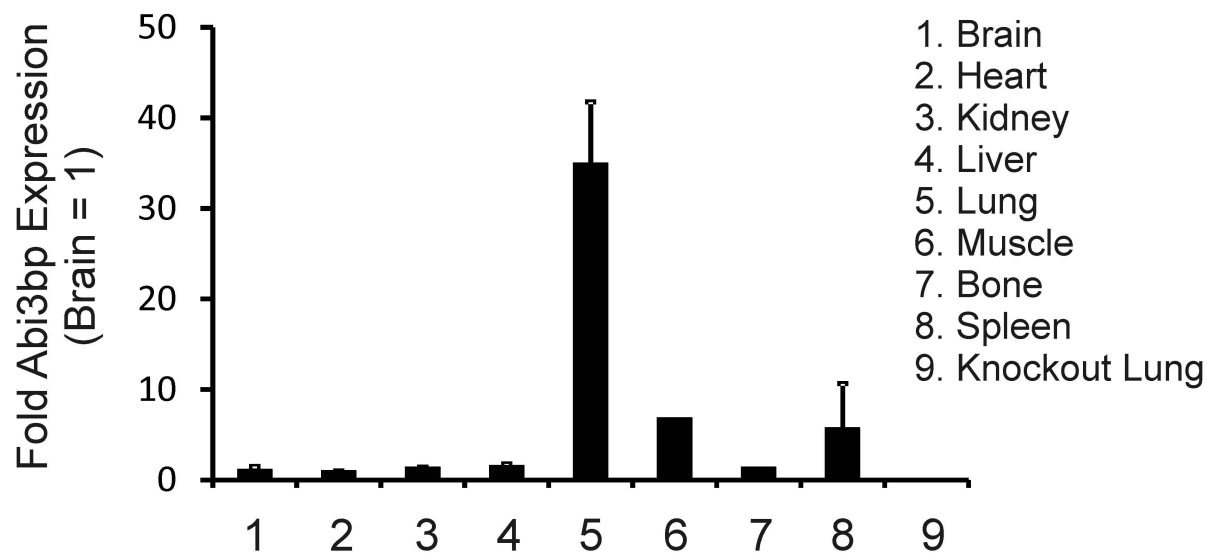


Cn: control, Mk: Mock, Ng: control siRNA, pax siR: paxillin siRNA, vin siR: vinculin siRNA

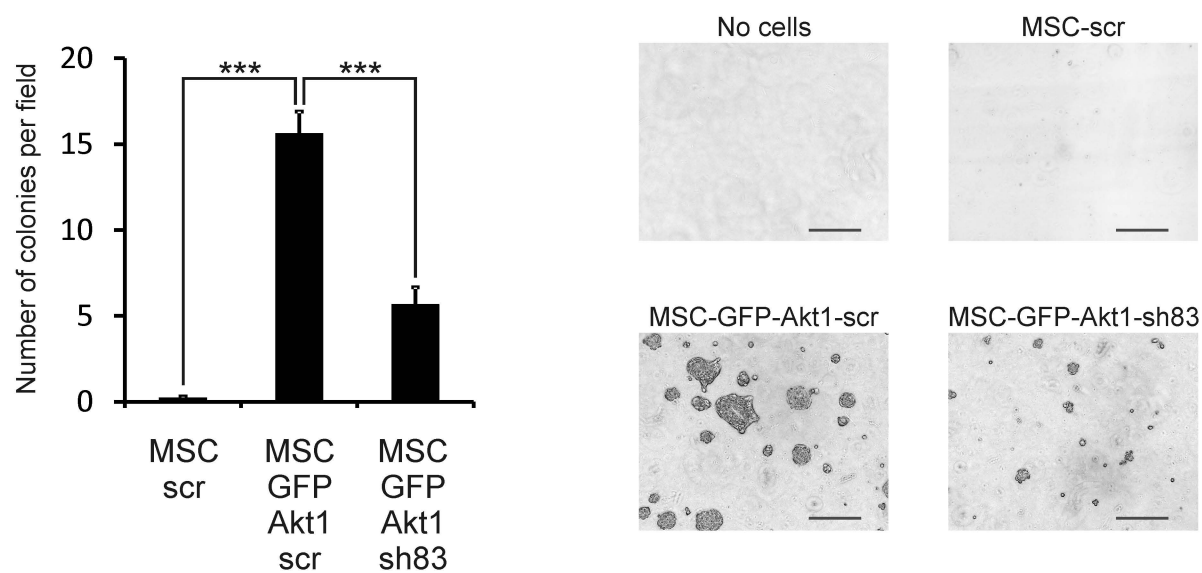
B



A

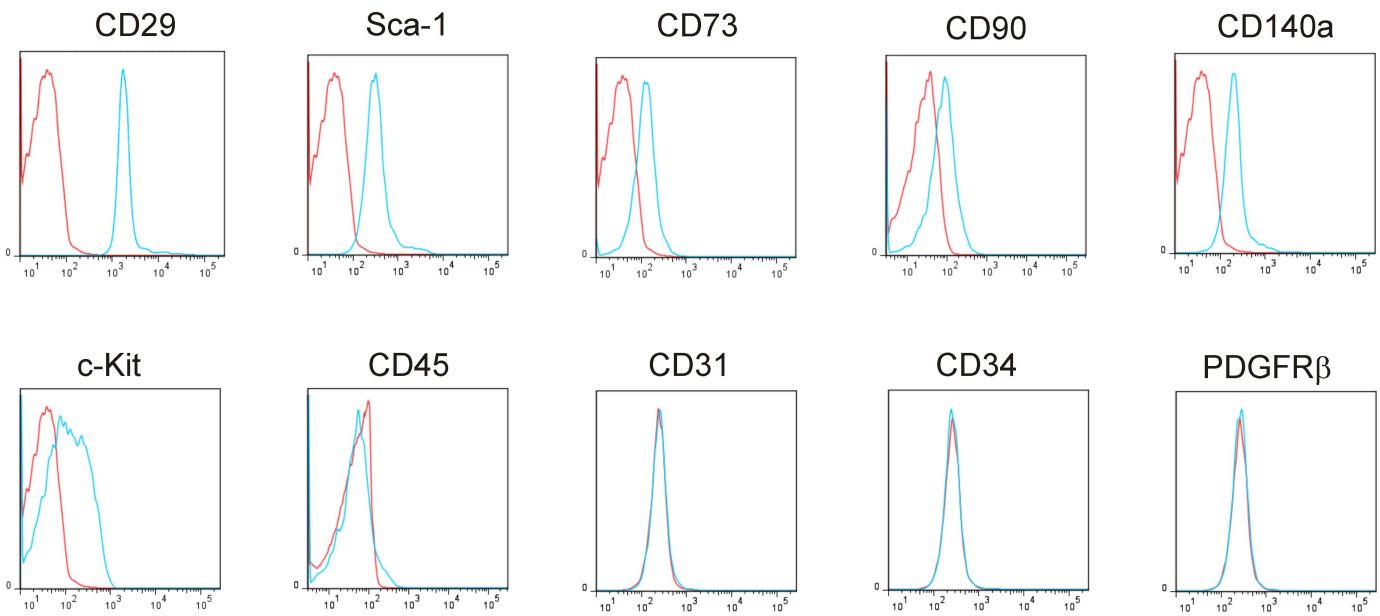


B

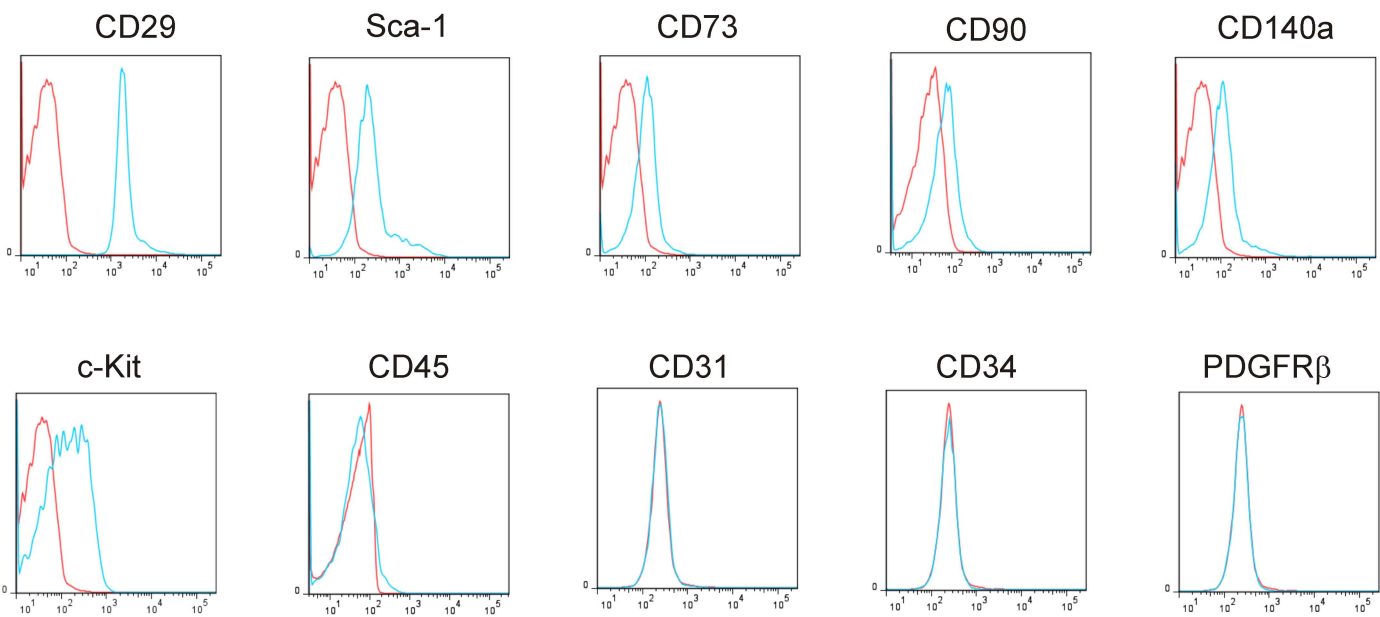


A.  $CD45^{neg}[CD44-CD105]^{pos}$  in bone marrow

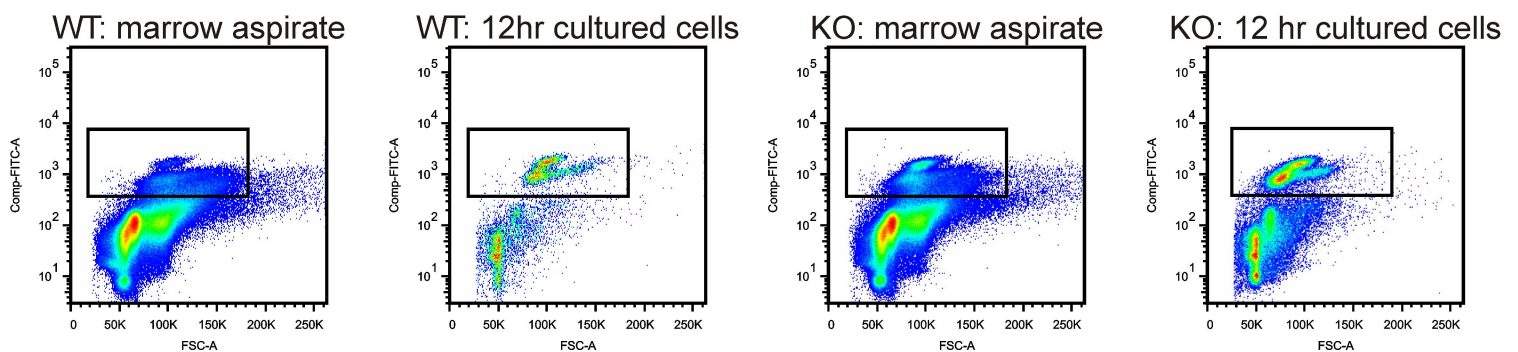
Wild-type bone marrow



Knockout bone marrow

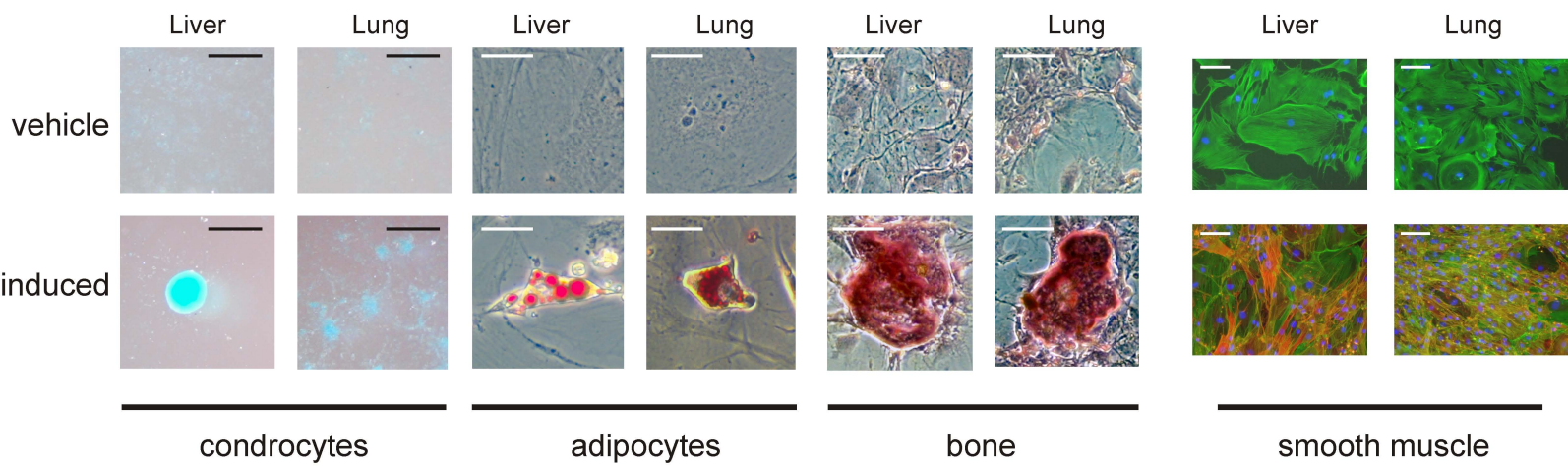


B.  $CD45^{neg}CD44^{pos}$  cells are enriched in the tissue culture plastic attached population



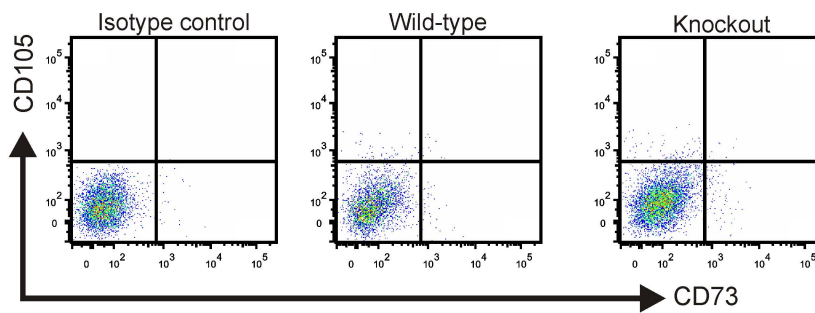
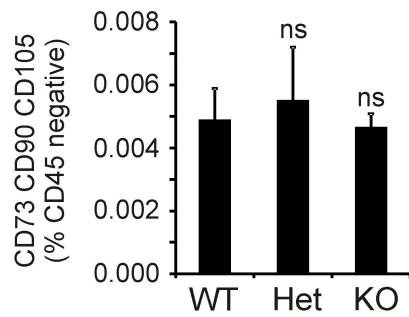


# A. Lung and liver MSC differentiation

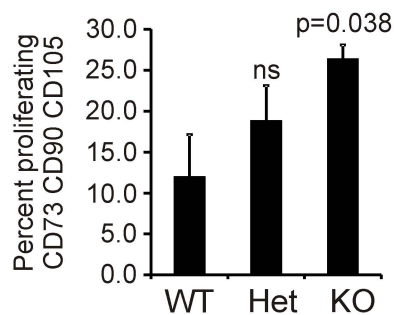


# B.

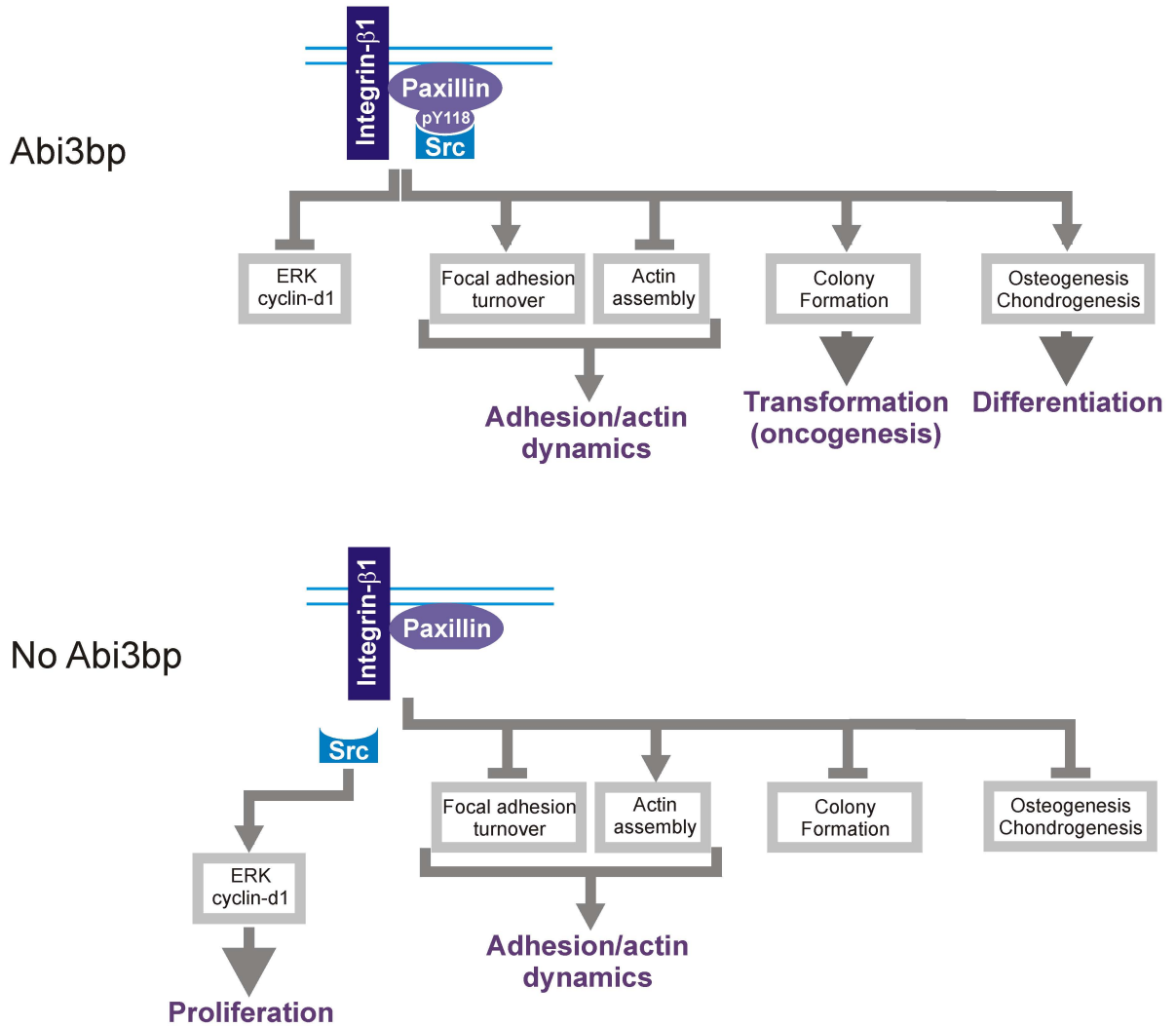
## Kidney



## Lung



A. Abi3bp controls proliferation, differentiation, and cell behaviour of MSCs



B. Cell signalling pathway to proliferation

