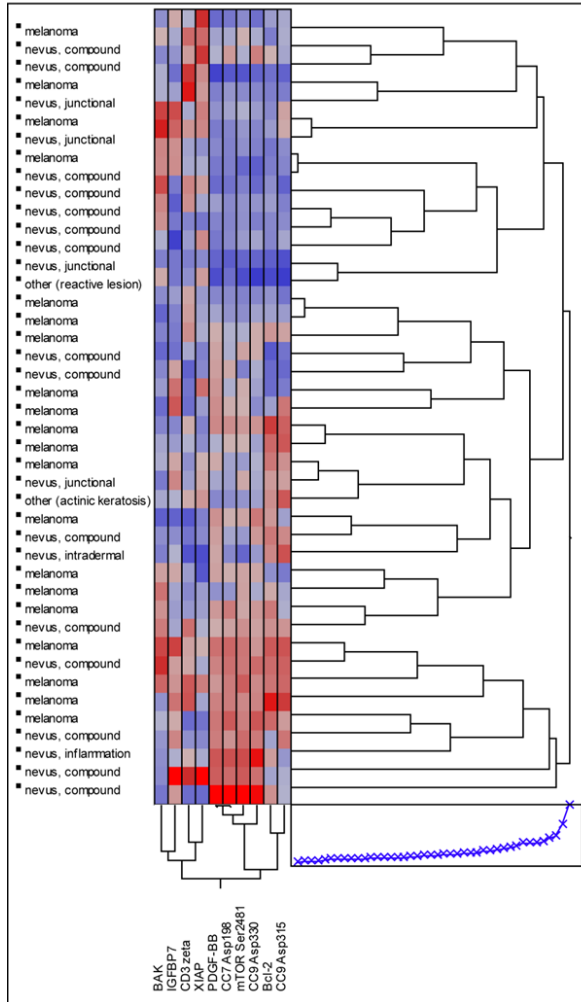
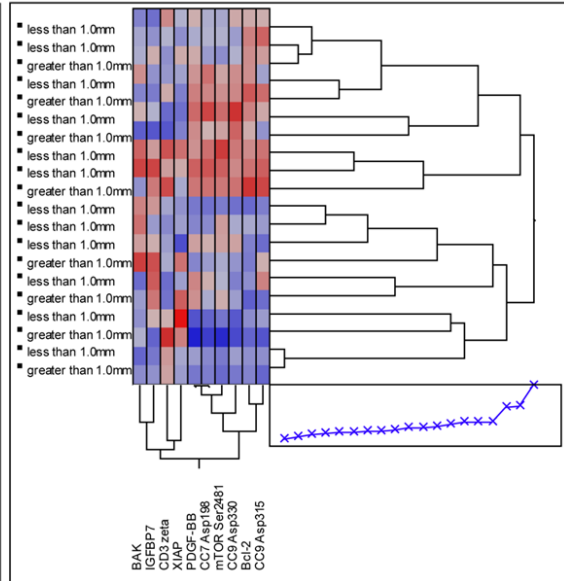


**Figure S1.** Supervised Bayesian clustering of serum proteins harvested by nanoparticles.

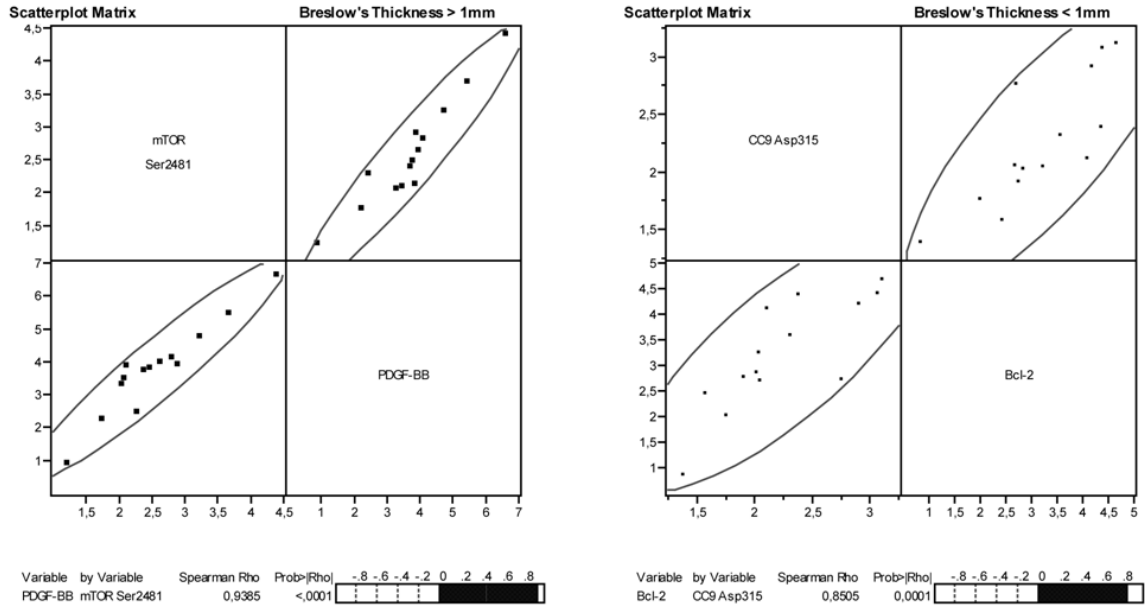
**A**



**B**



**Figure S2.** Spearman's rho non-parametric analysis for determining protein associations.



**Table S1.** Endpoints analyzed by means of RPPMA.**Table I e-supplement.** Endpoints analyzed by means of RPPMA

<b>Antibody</b>	<b>MW (kDa)</b>	<b>Vendor</b>	<b>Host</b>	<b>Dilution</b>
Bcl-2	28	CellSignaling	Rabbit	1:200
Caspase-7, cleaved (D198)	20	CellSignaling	Rabbit	1:100
Caspase-9, cleaved (D315)	35	CellSignaling	Rabbit	1:100
Caspase-9, cleaved (D330)	17, 37	CellSignaling	Rabbit	1:100
mTOR (S2481)	289	CellSignaling	Rabbit	1:100
XIAP	53	CellSignaling	Rabbit	1:100
Bak	25	CellSignaling	Rabbit	1:50
PDGF	14.3	CalBiochem	Rabbit	1:50
IGFBP7	31	AbCam	Rabbit	1:100
CD3 zeta (8D3)	16,32	BD	Mouse	1:50
Akt (S473)	60	CellSignaling	Rabbit	1:100
Akt (T308)	60	CellSignaling	Rabbit	1:100
Bcl-2 (T56)	28	CellSignaling	Rabbit	1:200
Catenin (beta) (T41/S45)	85	CellSignaling	Rabbit	1:50
c-Kit (CD117)	145,125,95	Zymed	Rabbit	1:250
c-Kit (Y719)	120, 145	CellSignaling	Rabbit	1:250
c-Kit (Y721)	145, 125, 95	Zymed	Rabbit	1:2000
CREB (S133)	43	CellSignaling	Rabbit	1:200
ERK 1/2 (T202/Y204)	42, 44	CellSignaling	Rabbit	1:2000
MEK1 (S298)	45	CellSignaling	Rabbit	1:2000
MEK1/2 (S217/221)	45	CellSignaling	Rabbit	1:500
Met (Y1234/1235)	145	CellSignaling	Rabbit	1:200
PTEN (S380)	54	CellSignaling	Rabbit	1:500
VEGFR 2 (Y1175) (19A10)	230	CellSignaling	R mAb	1:50