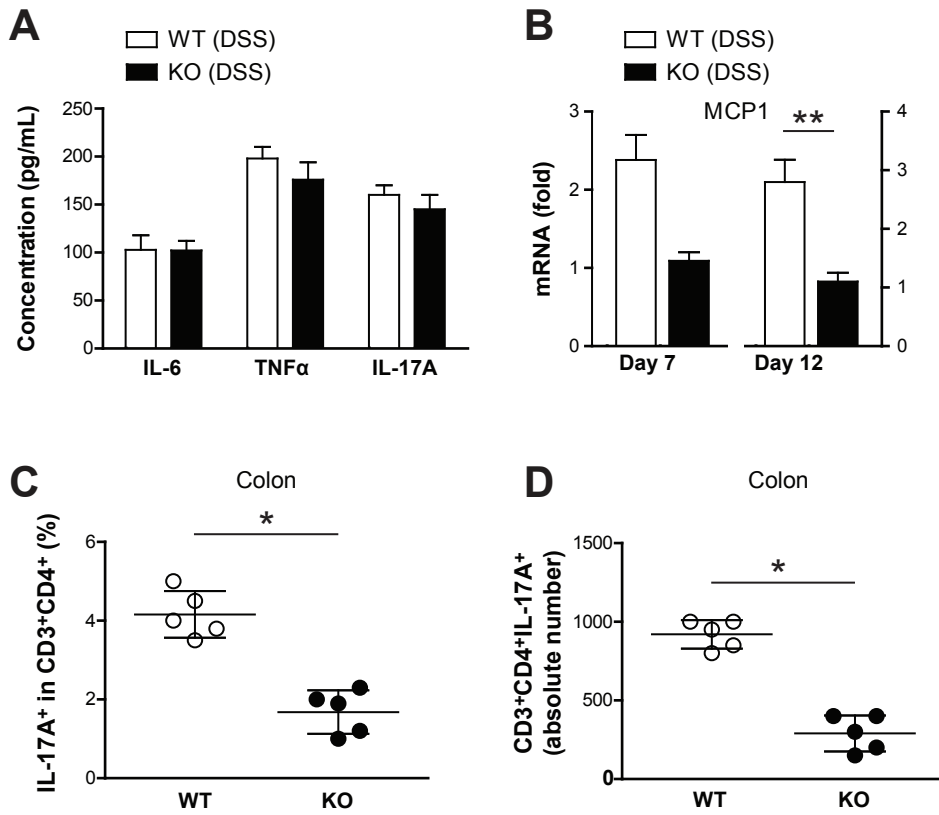
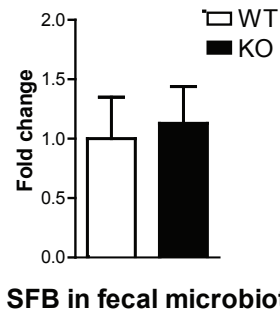


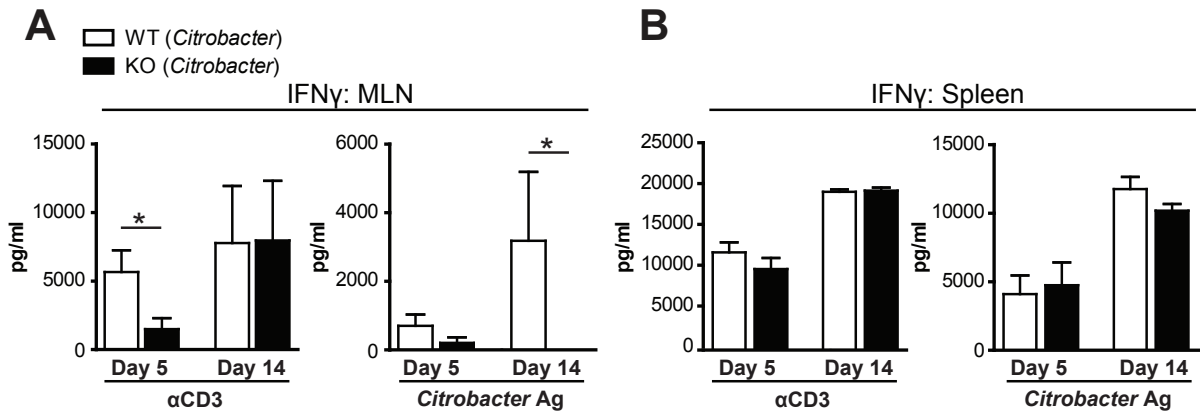
**Supplementary Figure 1.** Susceptibility during acute injury induced by DSS is not affected by Card9 deficiency. **(A)** Weight loss in DSS-treated wild-type (WT) and Card9-null (KO) mice. **(B)** Colon length of WT and KO mice after 7 days of DSS treatment. **(C)** Histology score of WT and KO mice after 7 days of DSS treatment. **(D)** H&E staining of representative cross-sections of murine medial colon (original magnification 20x) after 7 days of DSS treatment. Data are representative of at least 3 independent experiments. Error bars represent SEM.



**Supplementary Figure 2.** Immune responses to DSS exposure. **(A)** Systemic IL-6, TNF $\alpha$ , and IL-17A were assessed by ELISA on serum harvested 5 days after withdrawal of DSS treatment in wild-type (WT) and Card9-null (KO) mice (n=5 per group). **(B)** MCP1 expression in colon of WT and KO mice after 7 days of DSS (Day 7) or following 5 days of recovery (Day 12), as quantified by qRT-PCR. Data are shown as fold changes relative to WT mice without DSS for each time point (\*\* $P < .01$ ). **(C-D)** Proportion (C) and number (D) of CD3<sup>+</sup>CD4<sup>+</sup>IL-17A<sup>+</sup> cells in colon LP harvested 5 days after DSS was discontinued.



**Supplementary Figure 3.** Levels of segmented filamentous bacteria (SFB) in the fecal microbiota of wild-type (WT) and Card9-null (KO) mice. Data were quantified by qRT-PCR and normalized to the  $C_T$  value of the “all bacteria” 16S rRNA gene. Data are plotted relative to WT mice.  $n = 5$ . Error bars represent SEM.



**Supplementary Figure 4.** Secretion of IFN $\gamma$  is reduced in MLN of Card9-null (KO) mice infected with *C. rodentium* compared to wild-type (WT) mice. **(A-B)** Secretion of IFN $\gamma$  by MLN (A) and spleen (B) cells of WT and KO mice at 5 and 14 days after infection by *C. rodentium*. Cells were stimulated with either plate-bound anti-CD3 monoclonal antibodies or *C. rodentium* antigen. Data are representative of at least 2 independent experiments ( $n = 5$ ). Error bars represent SEM. \* $P < 0.05$ .