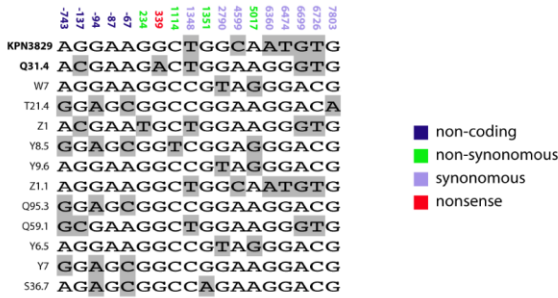


A



B

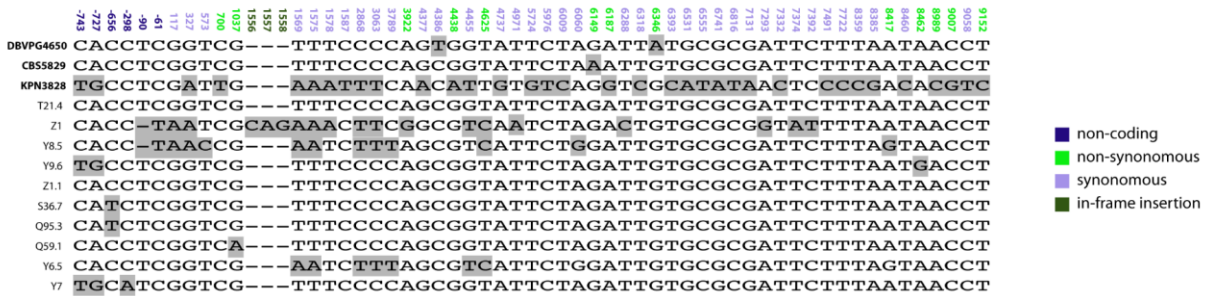


Figure S10 *IRA1* and *IRA2* genes from flocculent/invasive strains do not share derived polymorphisms. Shown are polymorphic sites in the *IRA1* (A) or *IRA2* (B) coding sequence and 800bp of promoter region for the indicated *S. paradoxus* strains. Minor alleles at each site in the alignment are highlighted in grey. Positions of each site relative to the start of the coding sequence are indicated above the alignment and color-coded to indicate the effect of each minor allele on the protein sequence. Original isolates of the five flocculent/invasive strains were used for sequencing, with names indicated in bold.