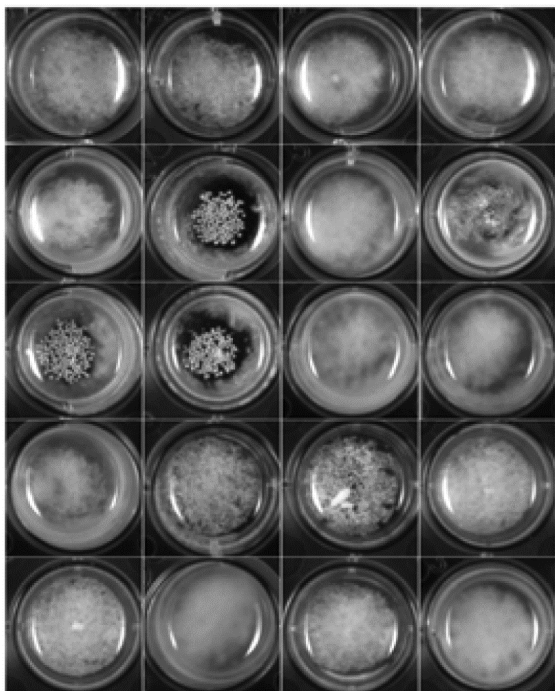
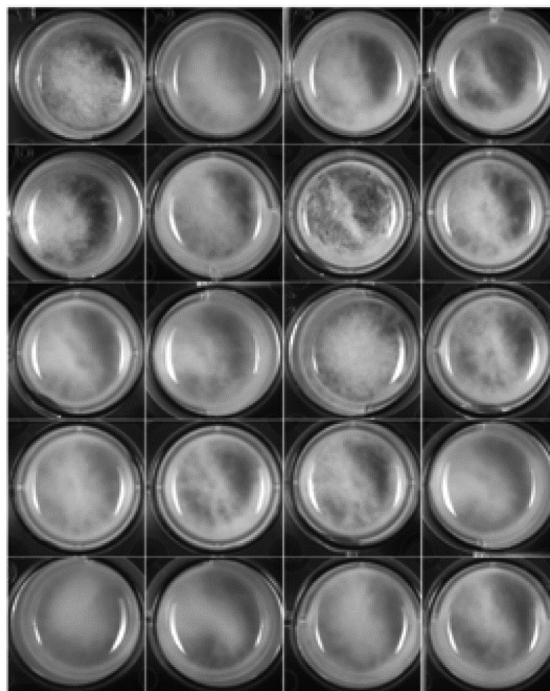


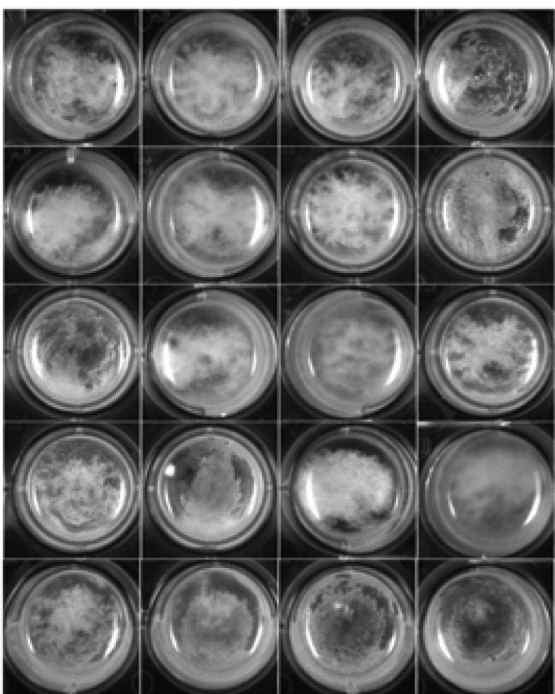
CBS5829 X KPN3828 recombinants



W7 X Q31.4 recombinants



W7 X KPN3829 recombinants



W7 X KPN3828 recombinants



Figure S3 Two distinct loci underlie flocculation across strains. Each panel shows liquid cultures of recombinant progeny from one complementation cross between two European flocculent parent strains. Each row shows cultures of YPD medium inoculated from each of the four spores of one tetrad and grown overnight as in Figure 1A of the main text. All progeny from each cross exhibit flocculation except the cross of W7 with KPN3828 (lower right), indicating that distinct loci underlie the flocculation trait in the latter and for each other pair of European parent strains tested, the two strains share the same causal locus.