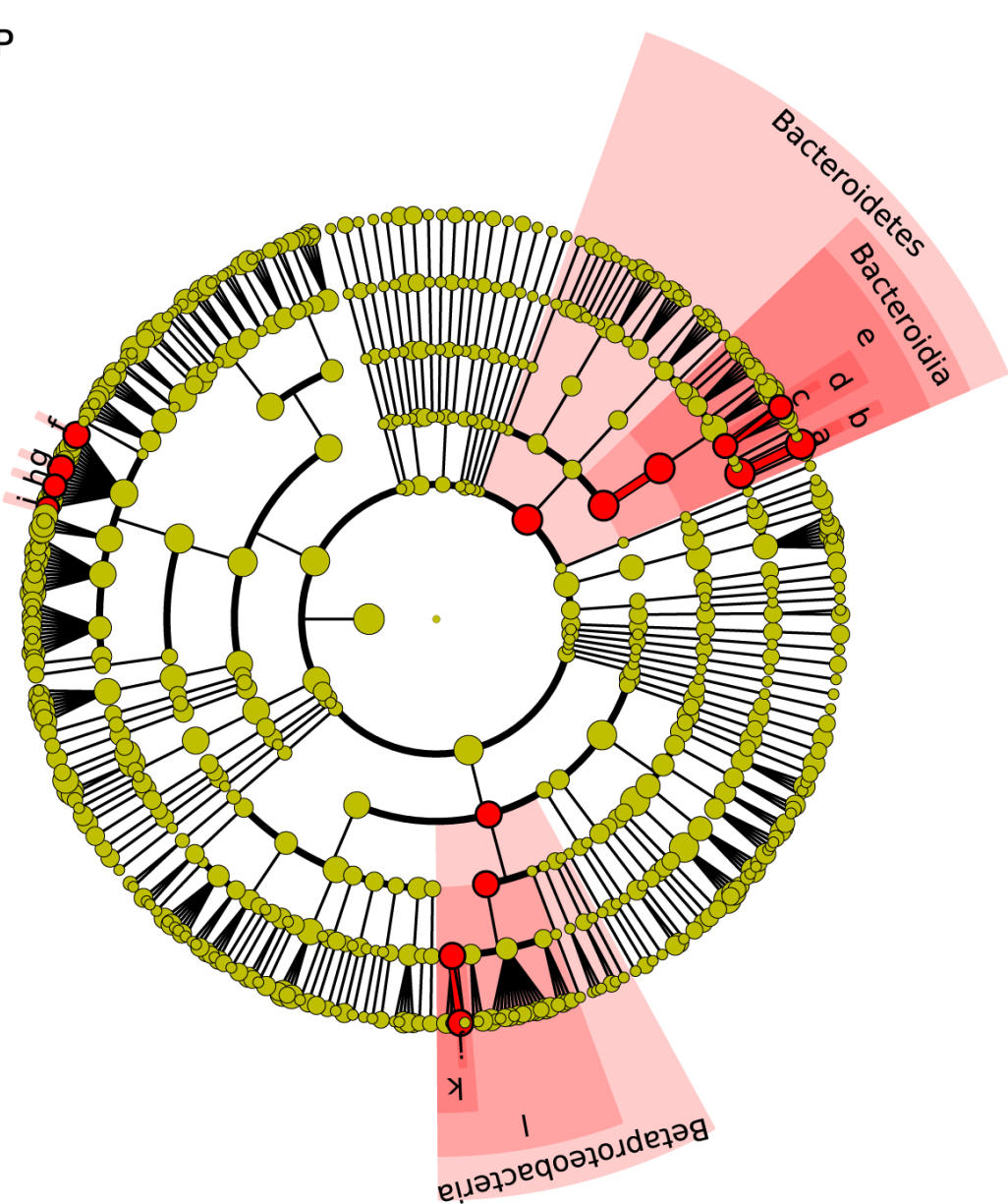


Cladogram - Pouch samples, four group comparison

FAP



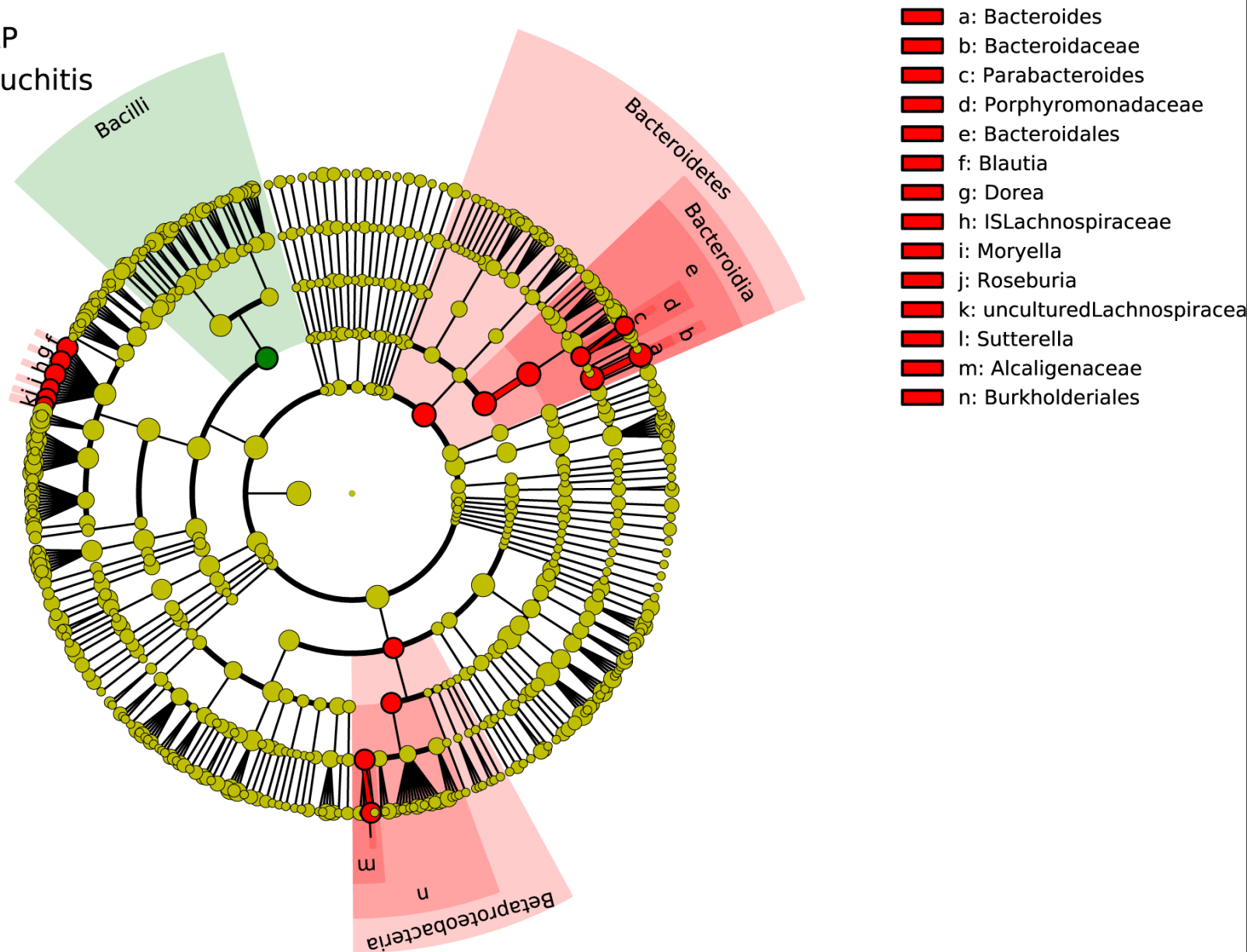
- a: Bacteroides
- b: Bacteroidaceae
- c: Parabacteroides
- d: Porphyromonadaceae
- e: Bacteroidales
- f: Blautia
- g: ISLachnospiraceae
- h: Moryella
- i: unculturedLachnospiraceae
- j: Sutterella
- k: Alcaligenaceae
- l: Burkholderiales

Significant associations as highlighted, with outcome group(s) where increased proportion was detectable indicated

Cladogram - Pouch samples, FAP vs Pouchitis

■ FAP

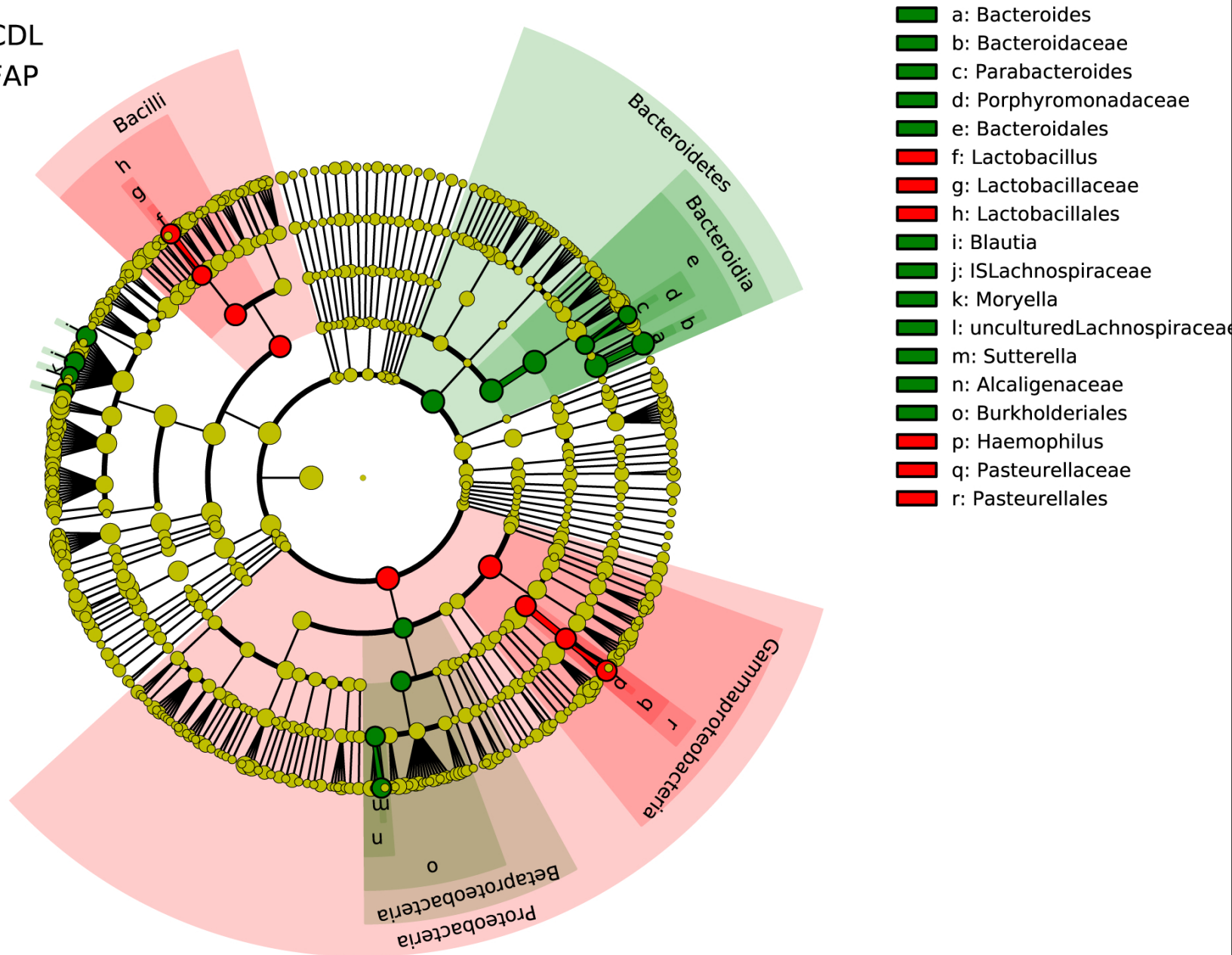
■ Pouchitis



Significant associations as highlighted, with outcome group(s) where increased proportion was detectable indicated

Cladogram - Pouch samples, FAP vs Crohn's disease-like

■ CDL
■ FAP

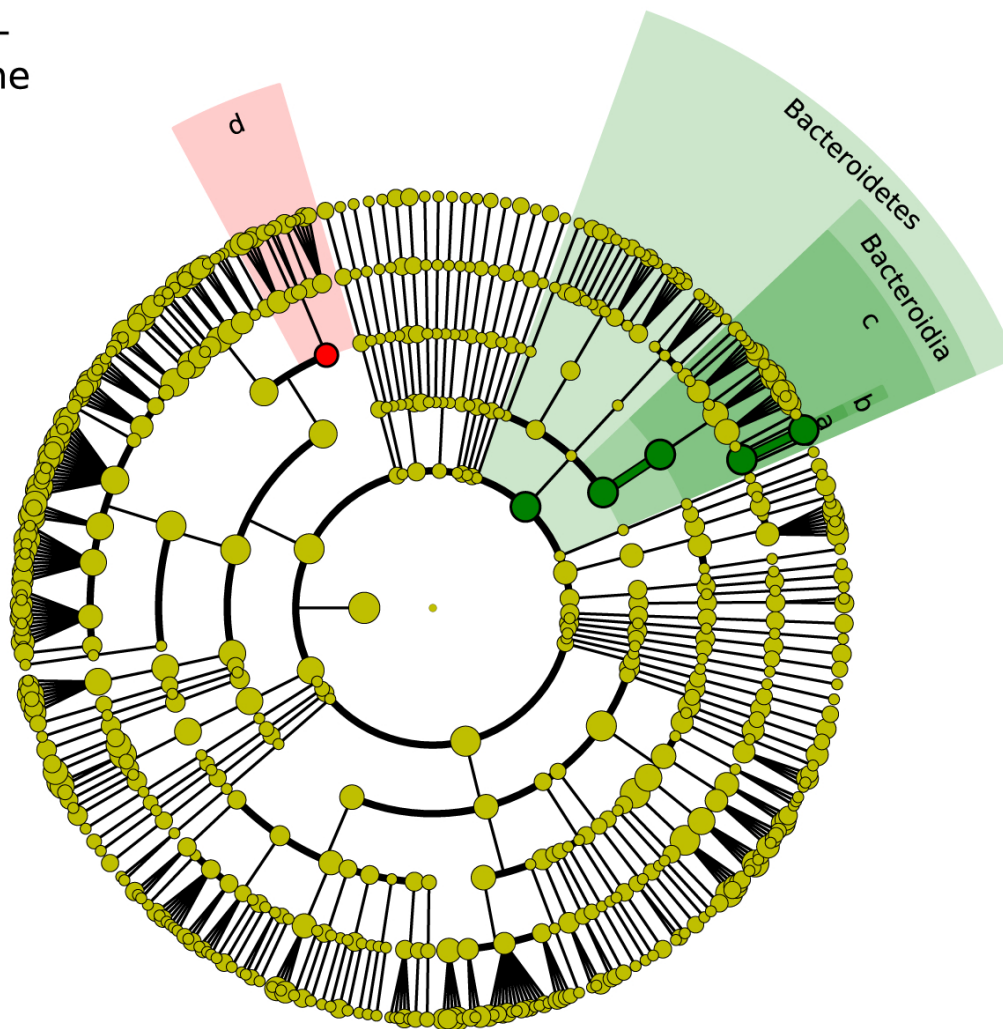


Significant associations as highlighted, with outcome group(s) where increased proportion was detectable indicated

Cladogram - Pouch samples, No Pouchitis vs Crohn's disease-like

- CDL
- None

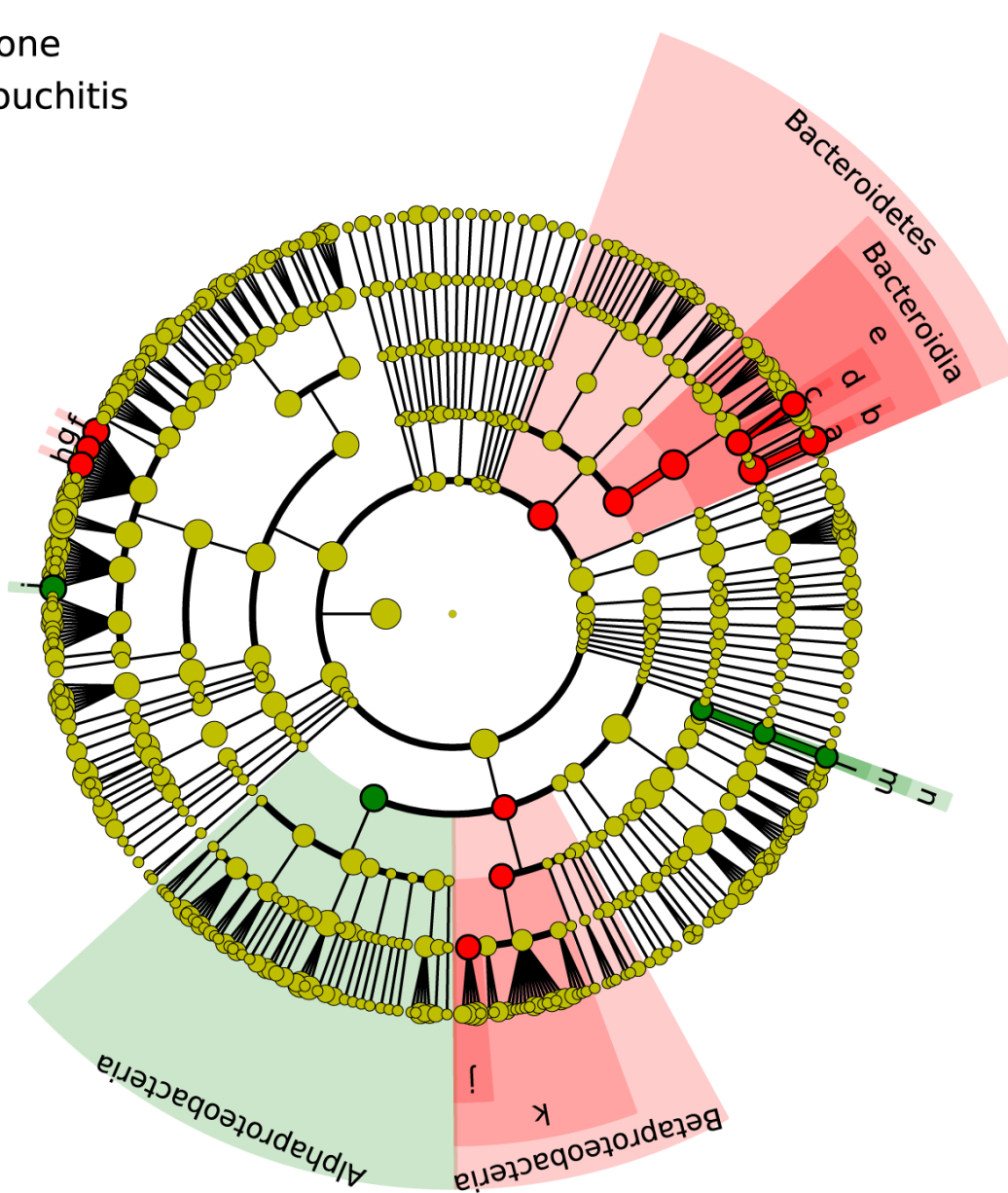
- a: Bacteroides
- b: Bacteroidaceae
- c: Bacteroidales
- d: Bacillales



Significant associations as highlighted, with outcome group(s) where increased proportion was detectable indicated

Cladogram - Pouch samples, No Pouchitis vs Pouchitis

■ None
■ Pouchitis



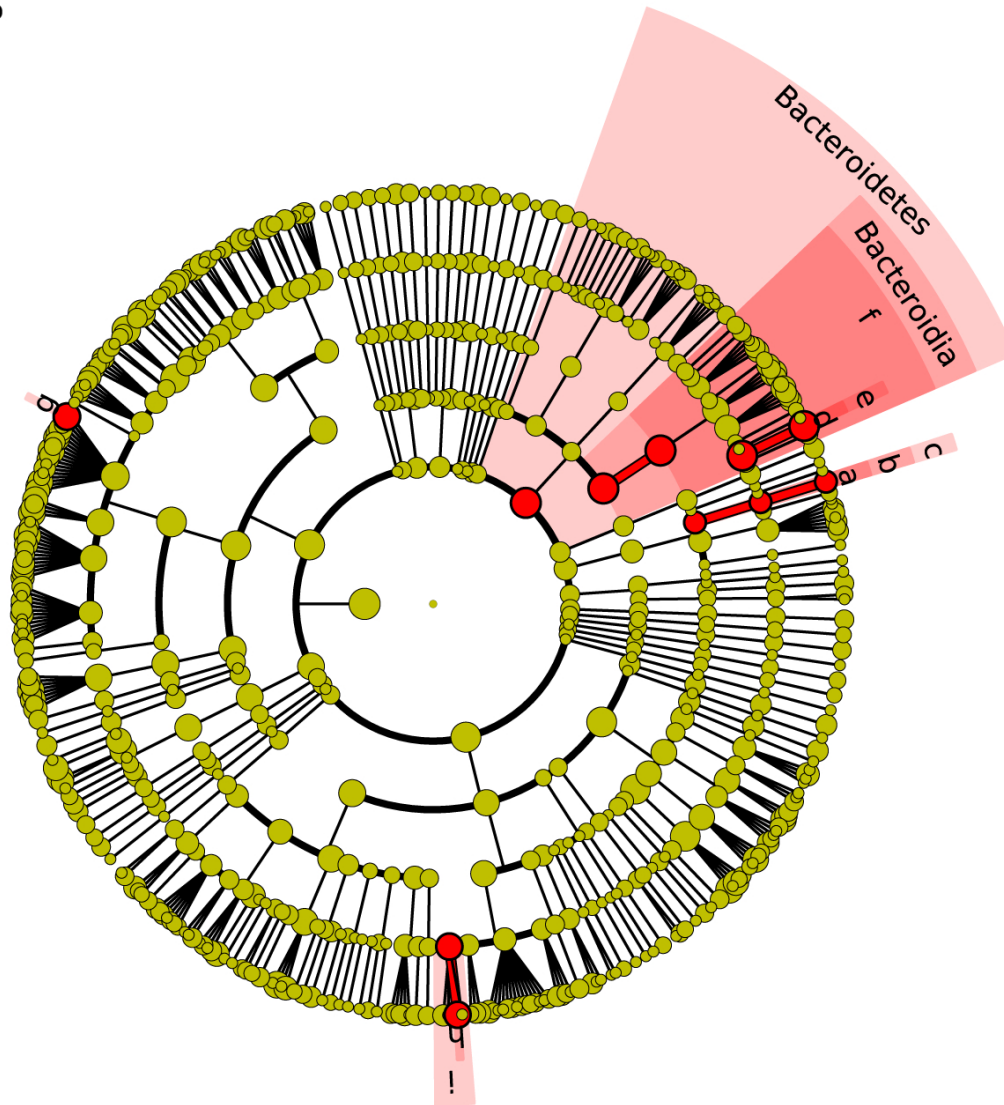
- a: Bacteroides
- b: Bacteroidaceae
- c: Parabacteroides
- d: Porphyromonadaceae
- e: Bacteroidales
- f: Blautia
- g: Dorea
- h: ISLachnospiraceae
- i: unculturedRuminococcaceae
- j: Alcaligenaceae
- k: Burkholderiales
- l: unclassified
- m: unclassified
- n: unclassified

Significant associations as highlighted, with outcome group(s) where increased proportion was detectable indicated

Cladogram - Afferent Limb samples, four group comparison

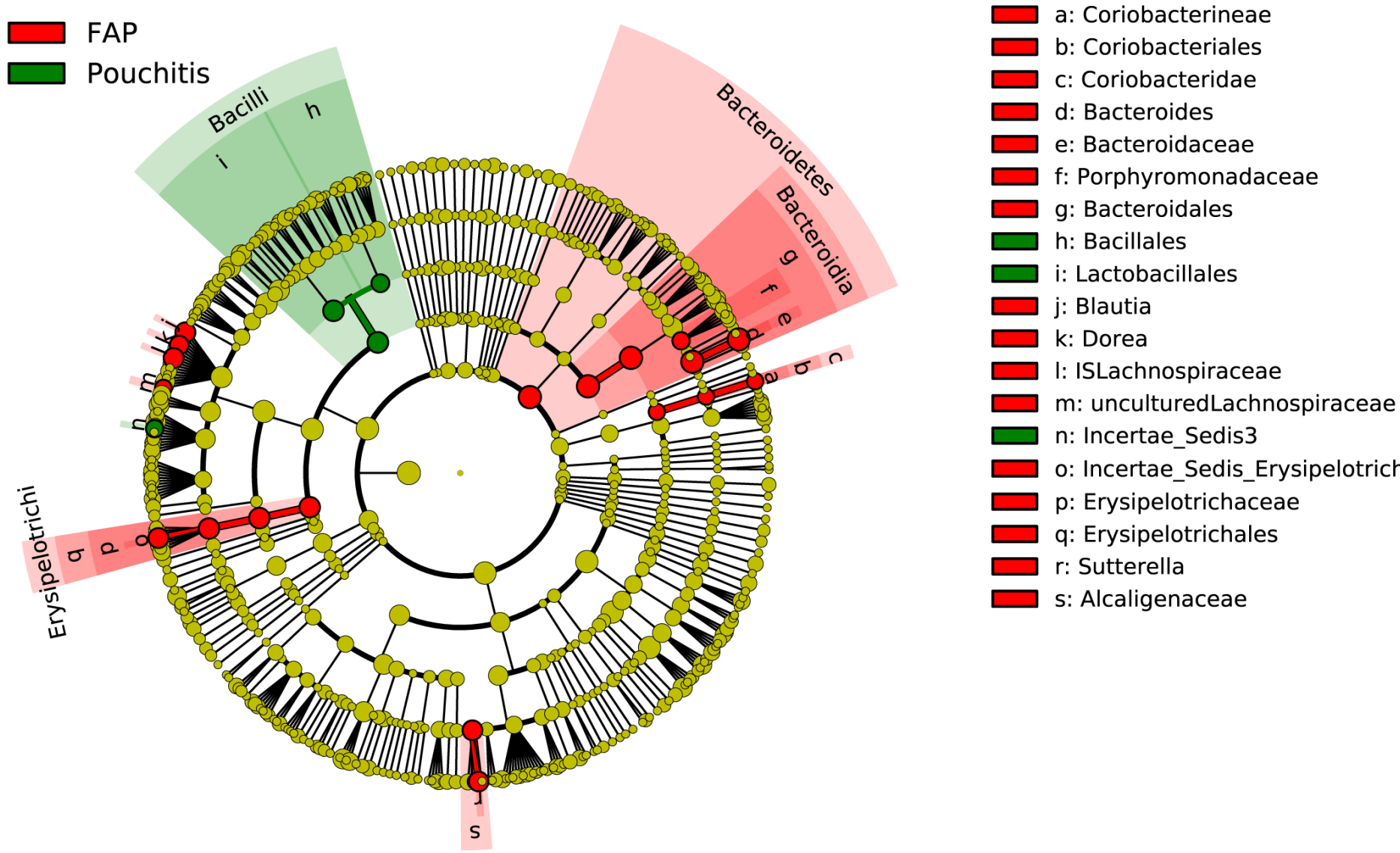
■ FAP

- a: Coriobacterineae
- b: Coriobacteriales
- c: Coriobacteridae
- d: Bacteroides
- e: Bacteroidaceae
- f: Bacteroidales
- g: Blautia
- h: Sutterella
- i: Alcaligenaceae



Significant associations as highlighted, with outcome group(s) where increased proportion was detectable indicated

Cladogram - Afferent Limb samples, FAP vs Pouchitis

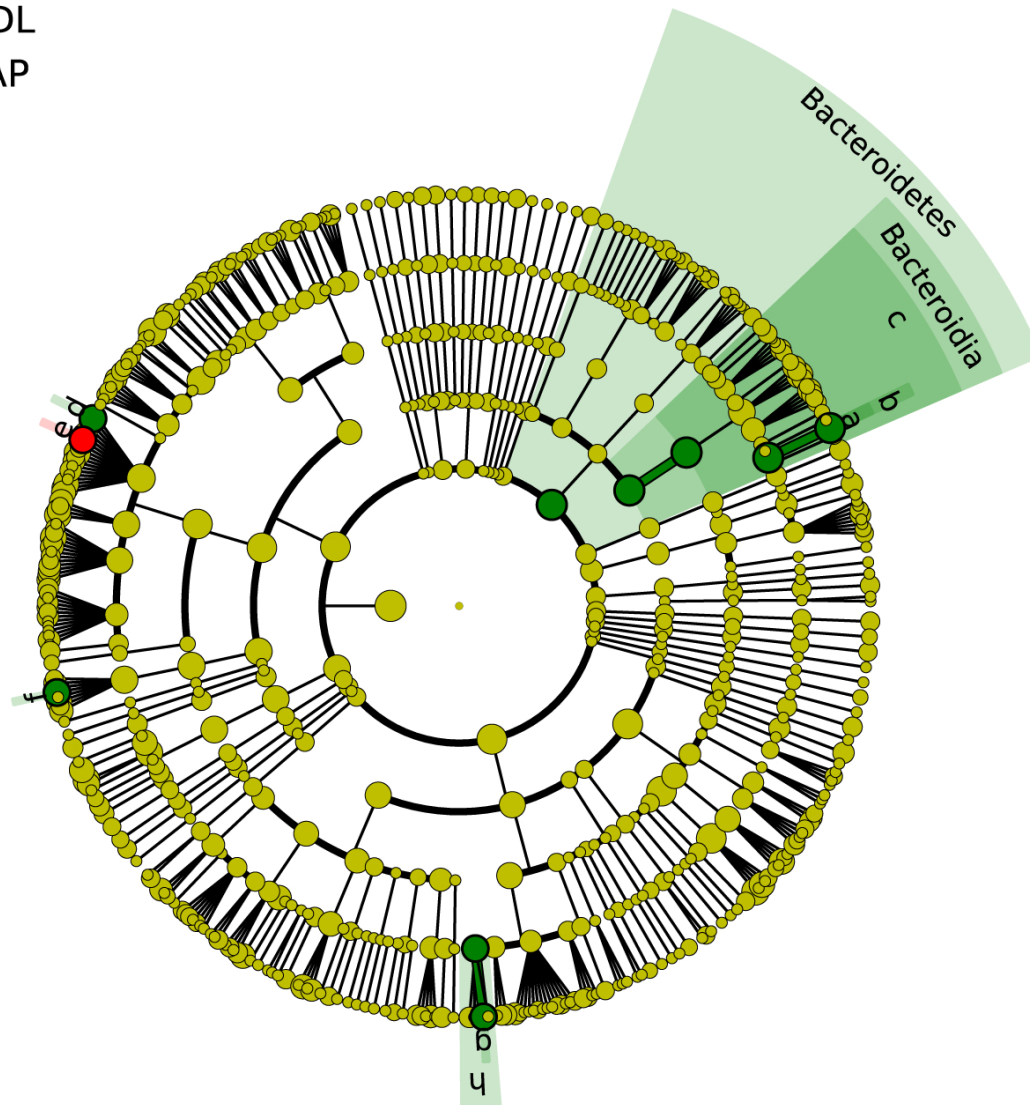


Significant associations as highlighted, with outcome group(s) where increased proportion was detectable indicated

Cladogram - Afferent Limb samples, FAP vs Crohn's disease-like

- CDL
- FAP

- a: Bacteroides
- b: Bacteroidaceae
- c: Bacteroidales
- d: Blautia
- e: Epulopiscium
- f: Incertae_Sedis_Erysipelotrich
- g: Sutterella
- h: Alcaligenaceae

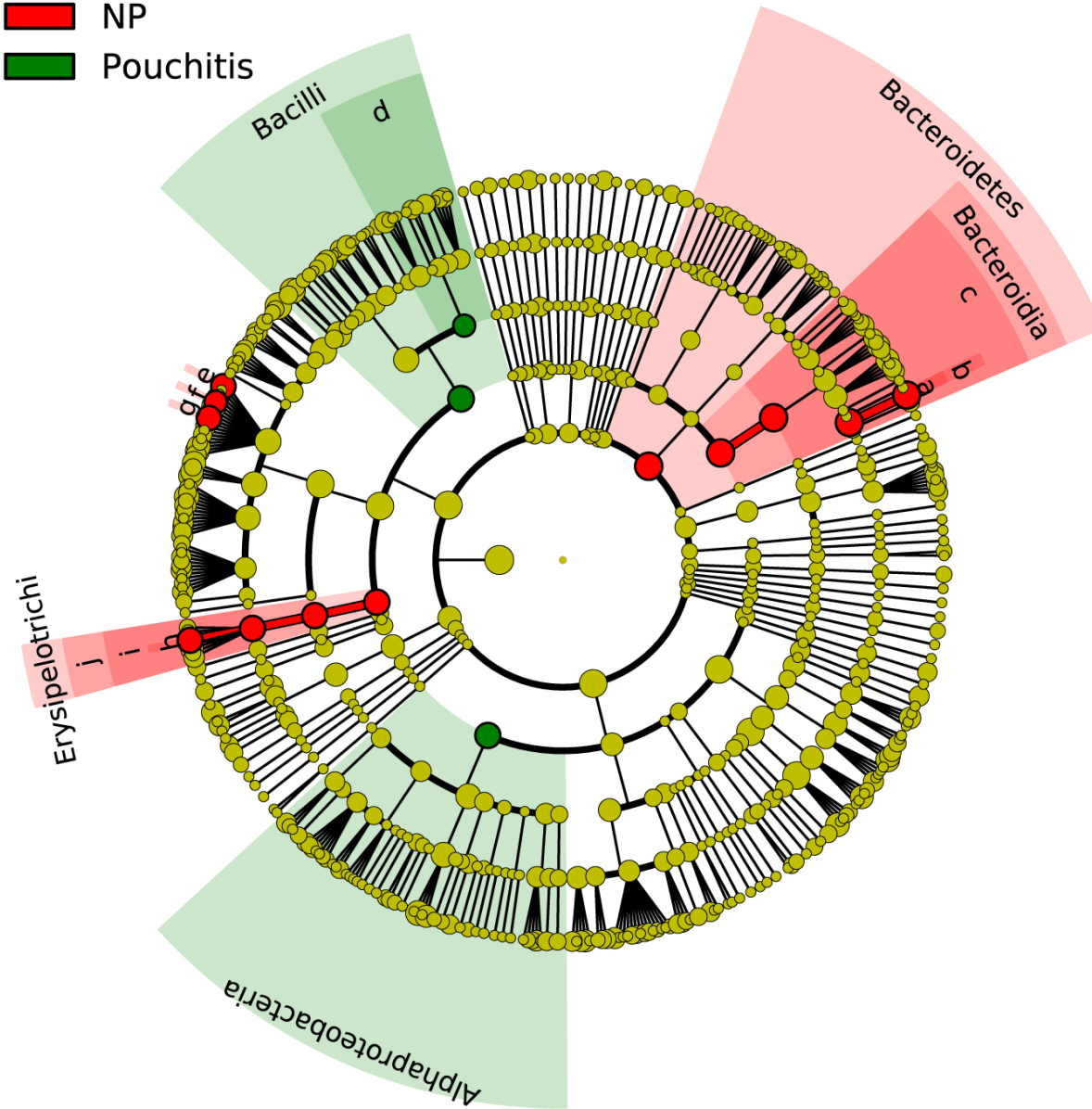


Significant associations as highlighted, with outcome group(s) where increased proportion was detectable indicated

Cladogram - Afferent Limb samples, No Pouchitis vs Pouchitis

■ NP

■ Pouchitis



■ a: Bacteroides

■ b: Bacteroidaceae

■ c: Bacteroidales

■ d: Bacillales

■ e: Blautia

■ f: Dorea

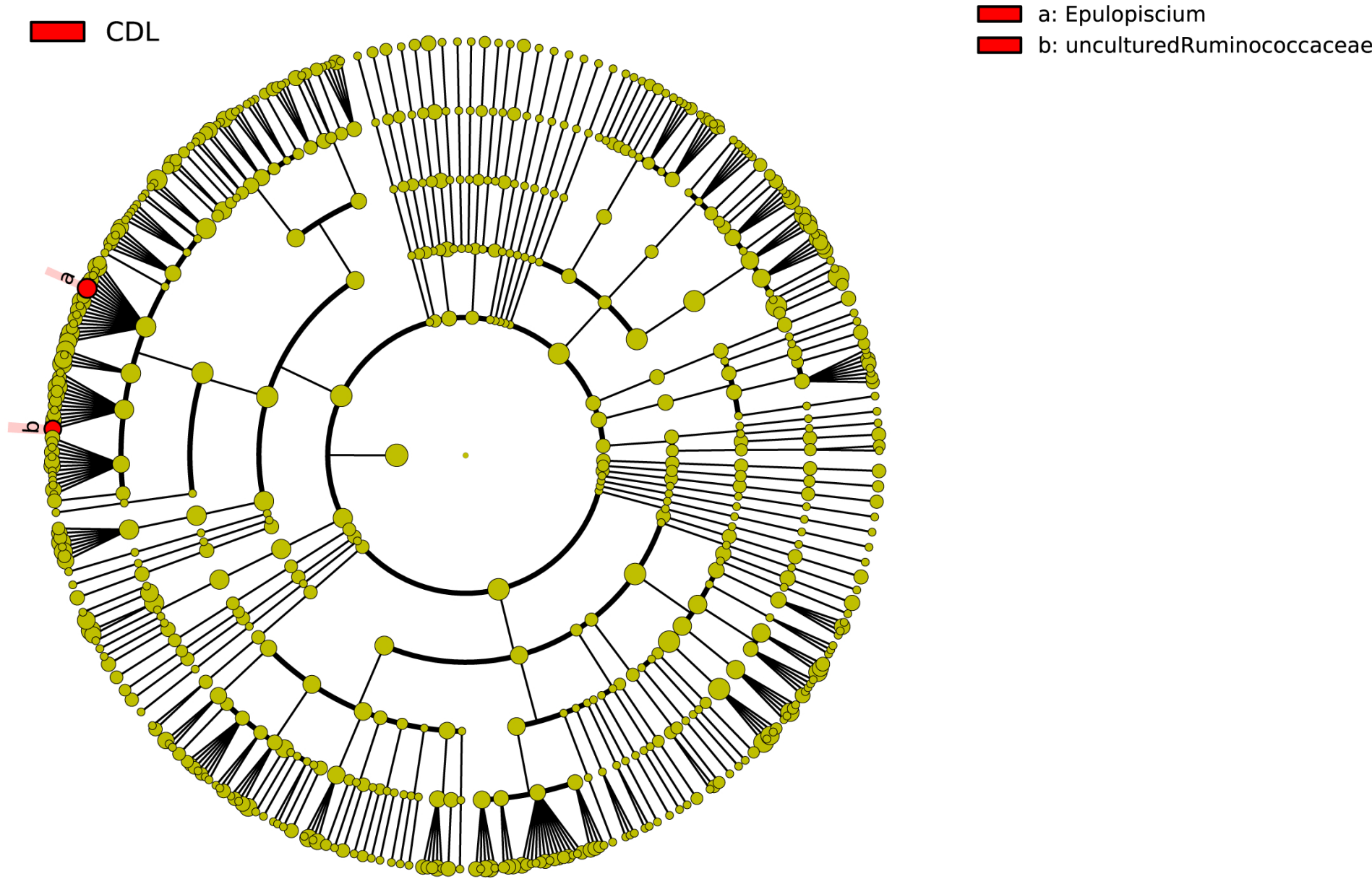
■ g: ISLachnospiraceae

■ h: Incertae_Sedis_Erysipelotrich

■ i: Erysipelotrichaceae

■ j: Erysipelotrichales

Cladogram - Afferent Limb samples, No Pouchitis vs Crohn's disease-like



Significant associations as highlighted, with outcome group(s) where increased proportion was detectable indicated