

All 5' to 3'

Gene	Forward	Reverse
<i>ACTB</i> (β -actin) (housekeeping gene)	CATGTACGTTGCTATCCAGGC	CTCCTTAATGTCACGCACGAT
<i>COX2</i>	CCCTCAGACAGCAAAGCCTA	GTTTTGACATGGGTGGGAAC
<i>PDL-1</i>	TGCTTGTCAGATGACTTCG	TATGGTGGTGCCGACTACAA
<i>TGFβ</i>	GGACATCAACGGGTTCCTACC	AGCAGGAAAGGCCGGTTC
<i>S100A9</i>	GGAATTCAAAGAGCTGGTGC	TCAGCATGATGAACTCCTCG
<i>C/EBP-β</i>	CCACGGCCACGGACACCTTCG	GCGCGGCCTCCCTGCTCTGA
<i>HES1</i>	CGGCTAAGGTGTTTGAG	GCTGTTGCTGGTGTAGAC
<i>NOX2</i>	CCATCCGGAGGTCTTACTTTGA	ACGTACAATTCGTTTCAGCTCCAT
<i>ARG1</i>	ATTGTTCCGTTCTTCTTGACTT	AGTGTGATGTGAAGGATTATG
<i>IDO</i>	GGCACACGCTATGGAAAAT	TCAGGCAGATGTTTAGCAATG
<i>STAT3</i>	ACCTGCAGCAATACCATTGAC	AAGGTGAGGGACTCAAATGC

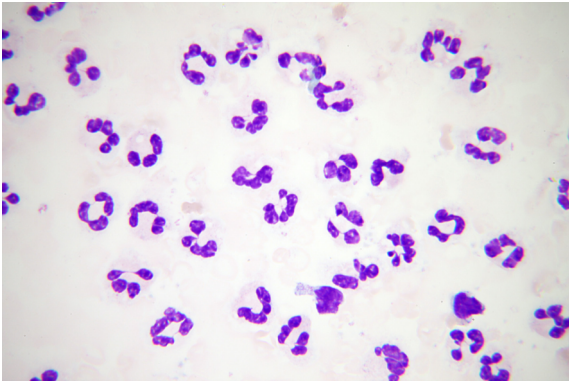
Supplemental Table S1. Primer sequences for qRT-PCR

Gene	<i>β-actin</i>	<i>ARG-1</i>	<i>COX2</i>	<i>C/EBPβ</i>	<i>HES-1</i>	<i>IDO</i>	<i>NOX2</i>	<i>PDL1</i>	<i>STAT3</i>	<i>S100/A9</i>	<i>TGF-β</i>
C_t value	16.30	21.90	24.75	23.99	30.19	34.04	21.75	33.16	23.58	14.90	22.57

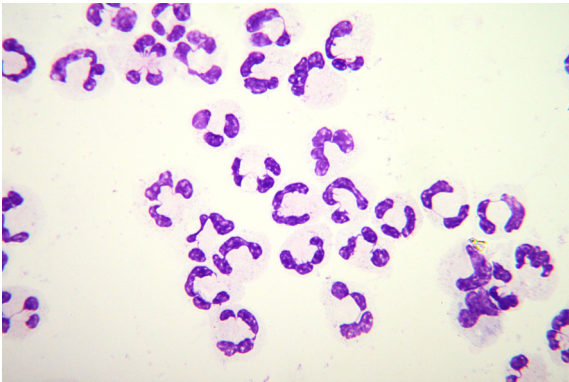
Supplemental Table S2. RNA expression of MDSC related genes

Quantitative RT-PCR was performed in MACS-isolated Gr-MDSCs. C_t values of the housekeeping gene β-actin and 10 established MDSC related genes are shown (higher C_t value implies lower gene expression).

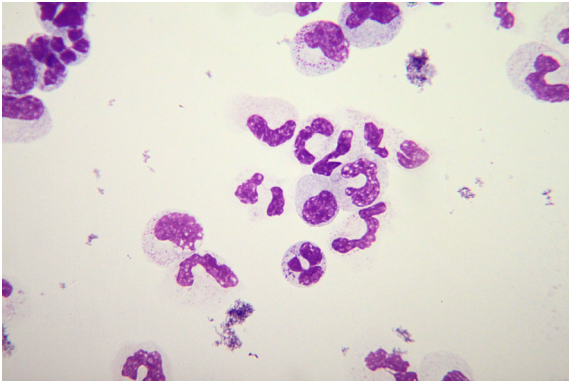
Supplemental Figure S1



Conventional PMN

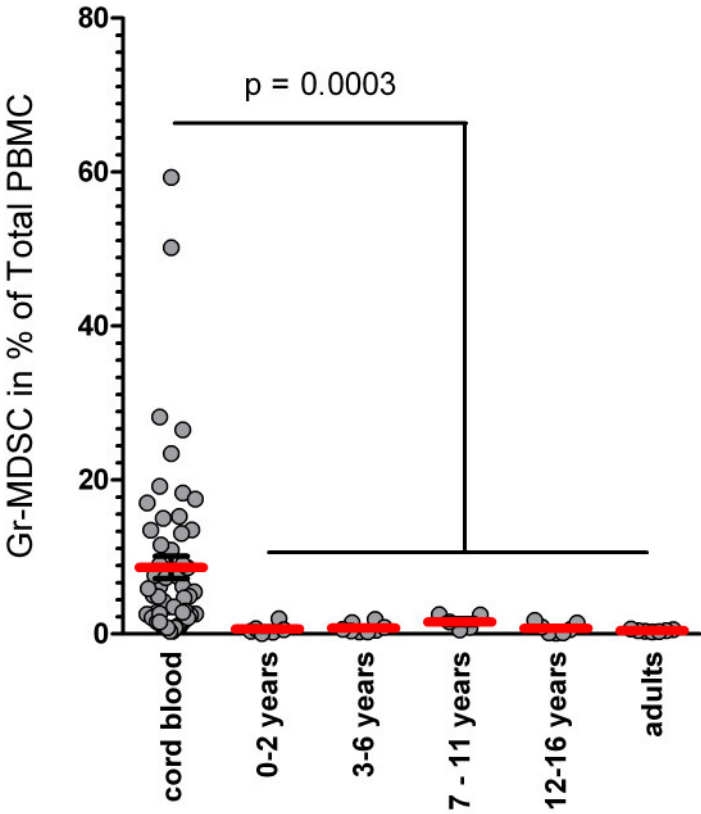


Adult Gr-MDSC

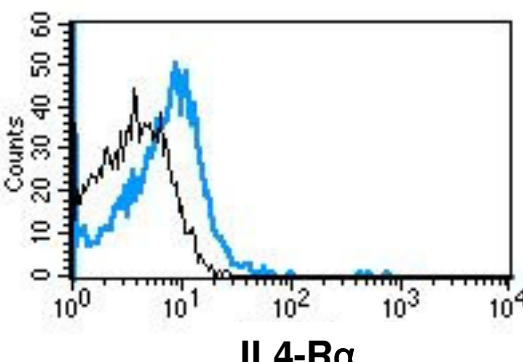
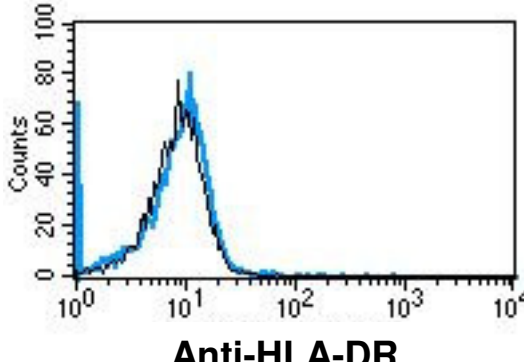
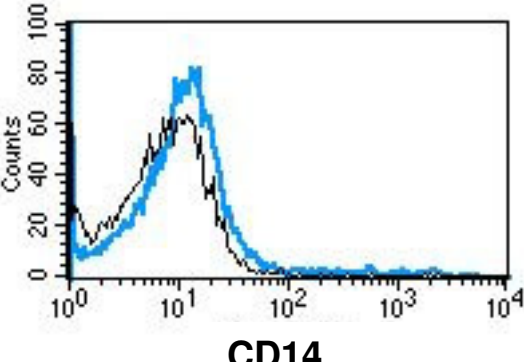
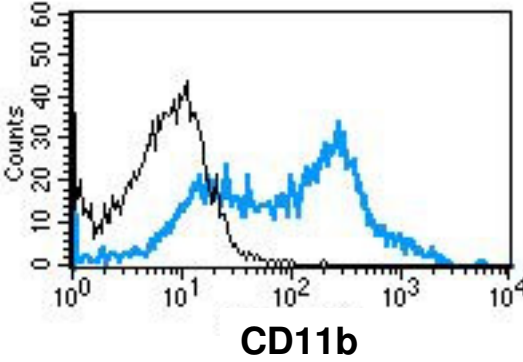
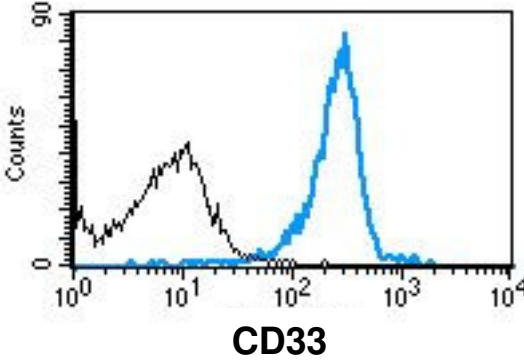
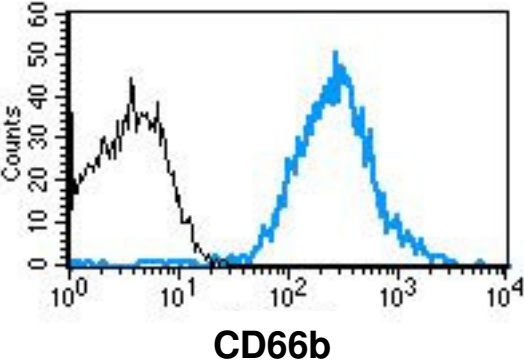
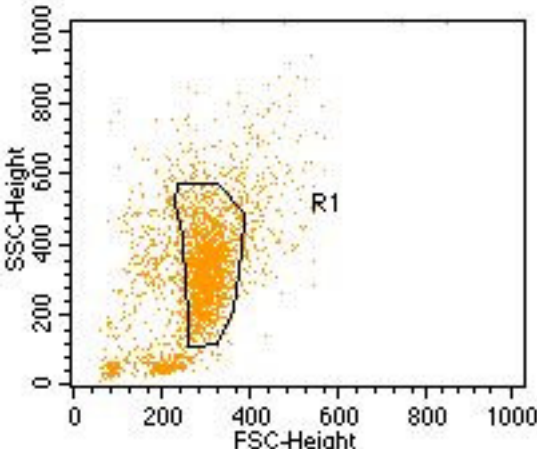


Cord blood Gr-MDSC

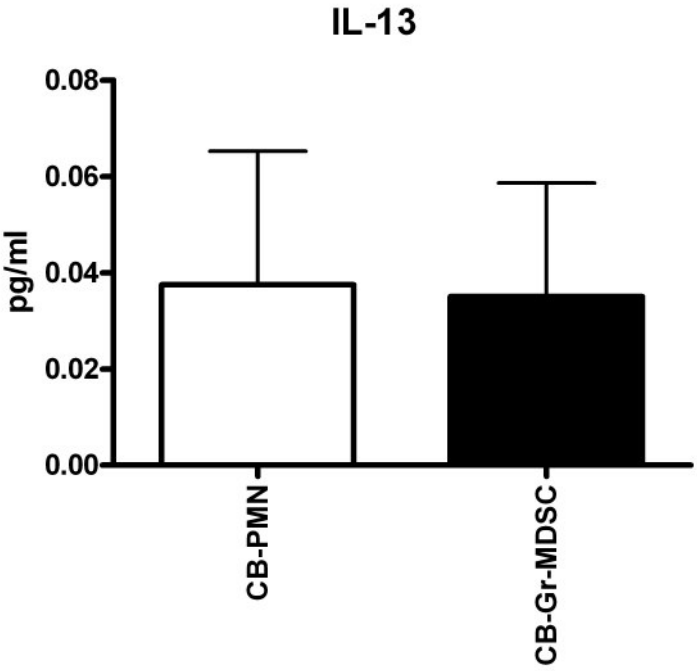
Supplemental Figure S2



Supplemental Figure S3



Supplemental Figure S4



SUPPLEMENTARY FIGURE LEGENDS

FIGURE S1. Cytospins of Gr-MDSCs

Isolated neutrophils or Gr-MDSCs were fixed with cytospin centrifugation and stained with May-Gruenwald-Giemsa-stain. Images were acquired on a Carl Zeiss Fotomicroscope (40x Planapo oil objective, Carl Zeiss) using Canon EOS 500 camera (Canon) and Adobe Photoshop CS3 software (Adobe).

FIGURE S2. Gr-MDSCs in cord blood and different age groups

Linear scale illustration of human Gr-MDSC numbers in cord blood and different age groups of healthy children and adults

FIGURE S3. Immunophenotyping of MACS-isolated human cord blood Gr-MDSCs

The immunophenotype of MACS-isolated cord blood Gr-MDSCs is CD66b^{high}CD33^{high}CD11b^{high}IL-4R α ^{inter}HLA-DR^{neg}CD14^{neg}. Representative histograms are shown.

FIGURE S4. IL-13 secretion of MACS-isolated human cord blood PMN and Gr-MDSCs

IL-13 quantification was performed in culture supernatants of MACS-isolated human cord blood PMN and Gr-MDSCs cultured over 4 days in complete medium using standard ELISA technique.