

Supplementary Figure 1

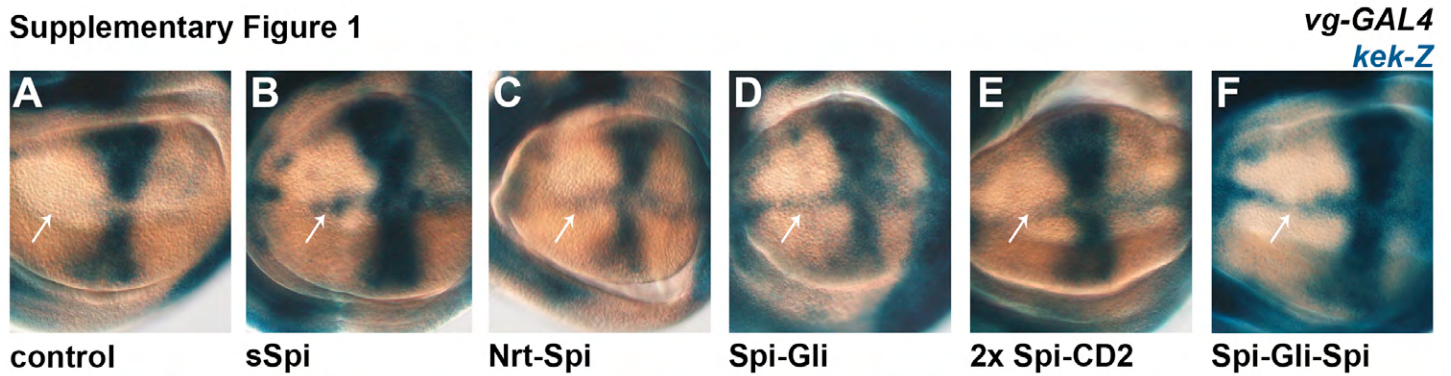


Fig. S1. Transmembrane Spi chimeras activate the EGFR target gene *kek-lacZ* *in vivo*. (A–F) Wing imaginal discs expressing sSpi (B), Nrt-Spi (C), Spi-Gli (D), two copies of Spi-CD2 (E), or Spi-Gli-Spi (F) with *vg-GAL4* induced ectopic *kek-lacZ* expression (blue) at the dorsal-ventral midline (arrows) compared to control discs (A).