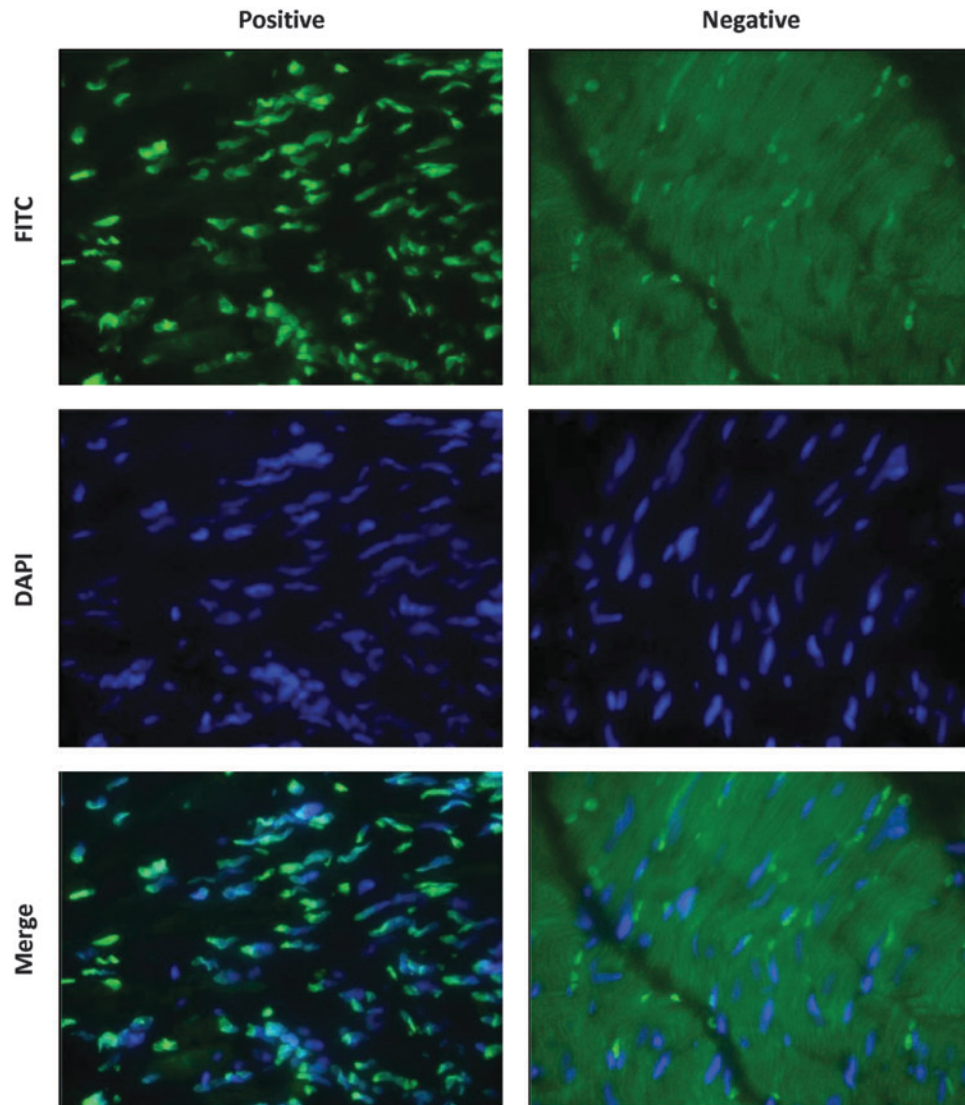


Supplementary Data



SUPPLEMENTARY FIG. S1. TUNEL staining controls. Representative images of a negative control (intact myocardium) and a positive control (DNase treated), TUNEL stain (green, top panel), nuclear DAPI stain (blue, middle panel), and merged images (lower panel). Low levels of background were observed in intact myocardium, where colocalization of green fluorescence and nuclei was not noticeable. Bright green fluorescence that colocalized with nuclei, clearly indicative of DNA fragmentation, is plainly evident in DNase-treated positive controls. TUNEL, terminal deoxynucleotidyl transferase-mediated dUTP nick-end labeling.