

608
609

Online Supplement: Figure Legends

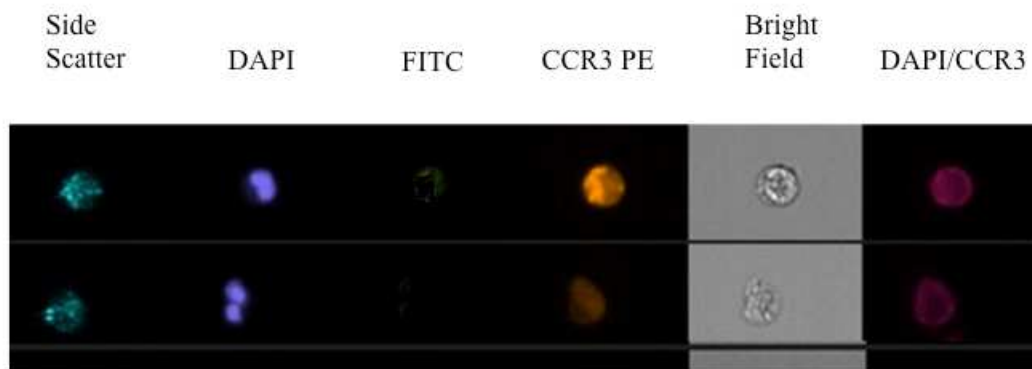
610 **Figure 1S Imagestream flow cytometry of CD45⁺CCR3⁺ leukocytes in CHES and/or**
611 **AERD.** We used Imagestream[®] flow cytometry as described in the text to confirm
612 that the CCR3⁺ cells were eosinophils.

613 **Figure 2S IFN- γ potentiation of eosinophilopoiesis.** CD34⁺ enriched hematopoietic stem
614 cells were cultured for 3 days with SCF, TPO, Flt3L, IL-3, and IL-5 after which
615 they were cultured for 3 additional weeks with just IL-3 and IL-5 with or without
616 the additional presence of IFN- γ . Media was changed weekly. After 3 weeks
617 aliquots were cytospun and stained (hematoxylin-eosin (H&E)). **Figure 2SA.** Cells
618 matured with only IL-5 and IL-3 (200x). **Figure 2SB.** Cells matured in the
619 additional presence of IFN- γ (200x). **Figure 2SC.** Cells matured in the additional
620 presence of IFN- γ (400x). Viable cells with bi-lobed nuclei and granules are
621 demonstrated along with numerous apoptotic bodies. All viable cells have the
622 appearance of granulocytes.

623 **Figure 3S Absence of basophil markers on CD34⁺ derived eosinophils.** CD34⁺ enriched
624 hematopoietic stem cells were cultured for 3 days with SCF, TPO, Flt3L, IL-3, and
625 IL-5 after which they were cultured for 3 additional weeks with just IL-3 and IL-5
626 with or without the additional presence of IFN- γ . Media was changed weekly.
627 After 3 weeks aliquots were collected and analyzed by flow cytometry for
628 expression of CD203c and Fc ϵ RI.

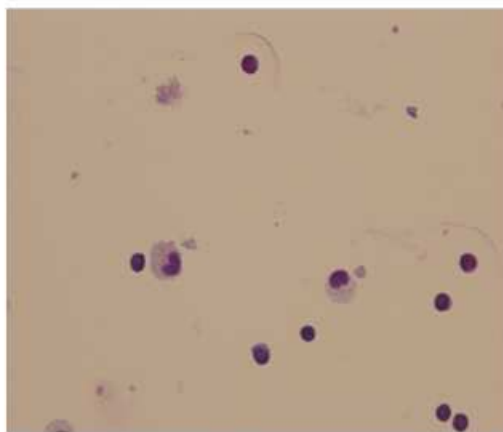
629
630

15



ACCEPTED

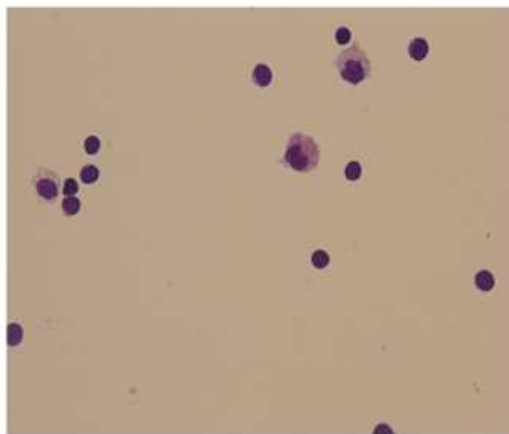
2SA



200X

ACCEPTED

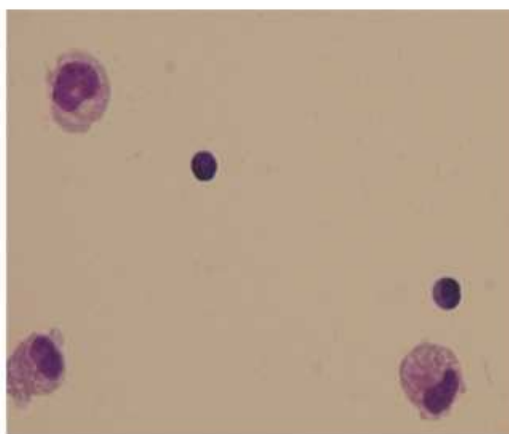
2SB



200X

ACCEPTED

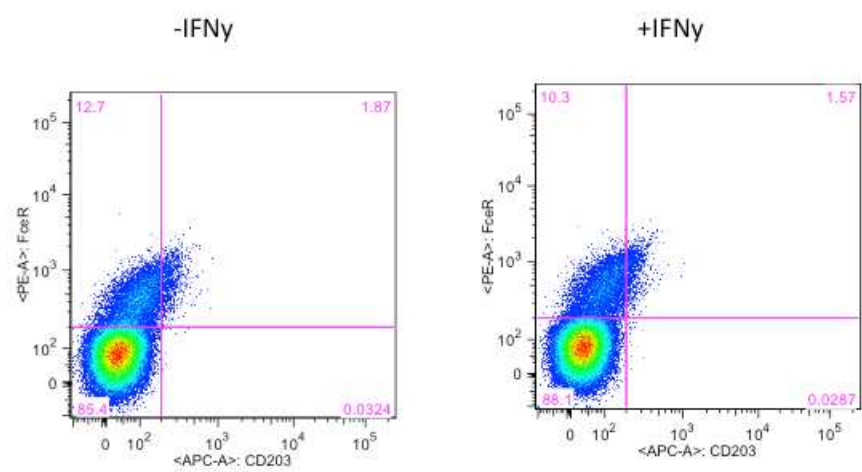
2SC



400X

ACCEPTED

38



ACCEPTED