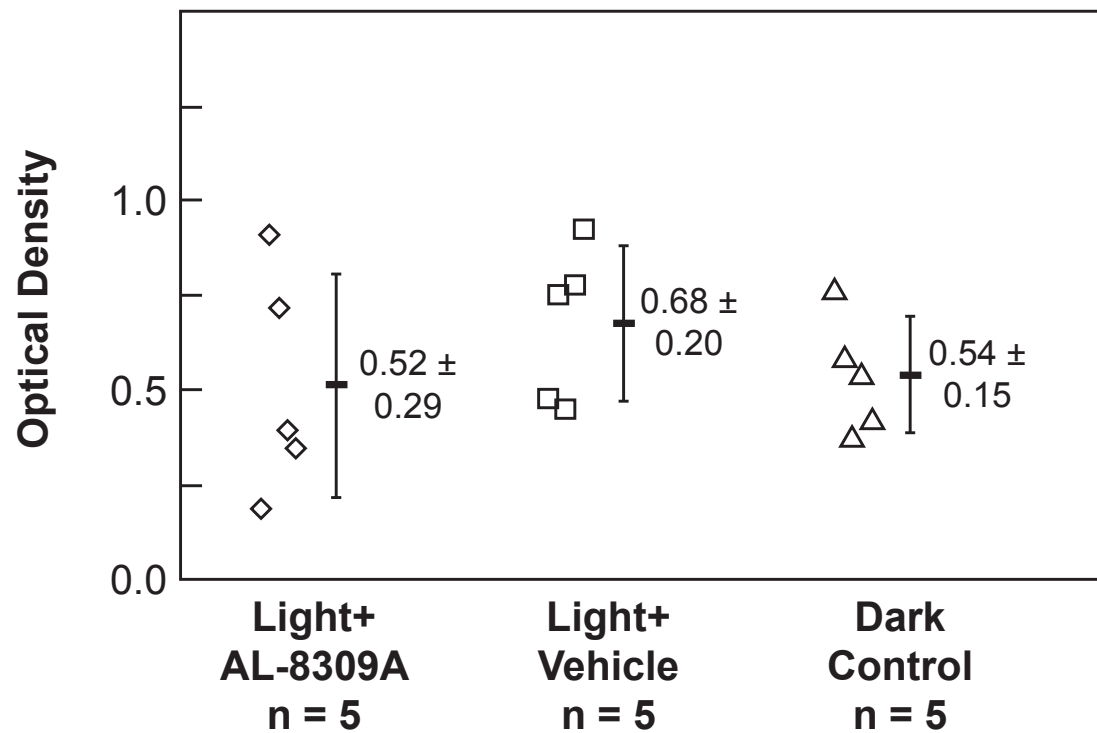
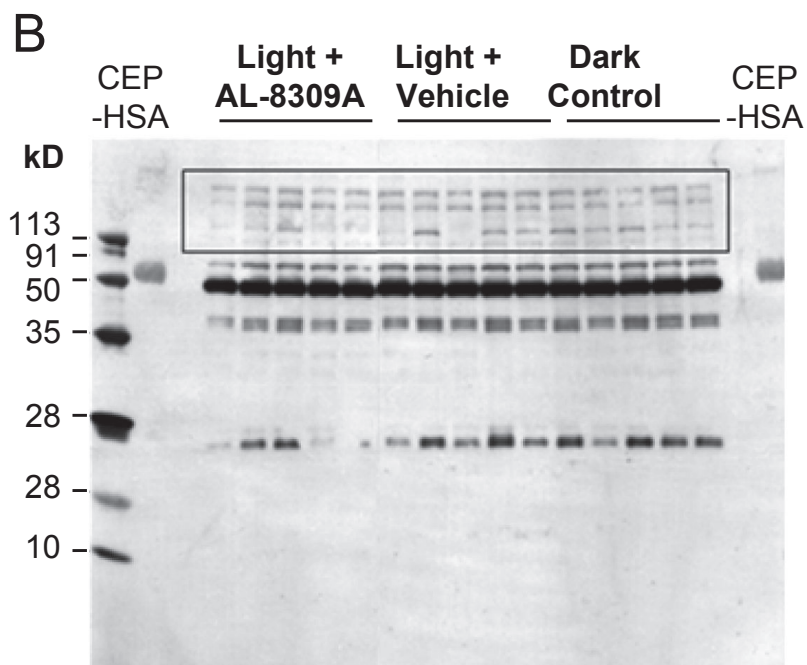
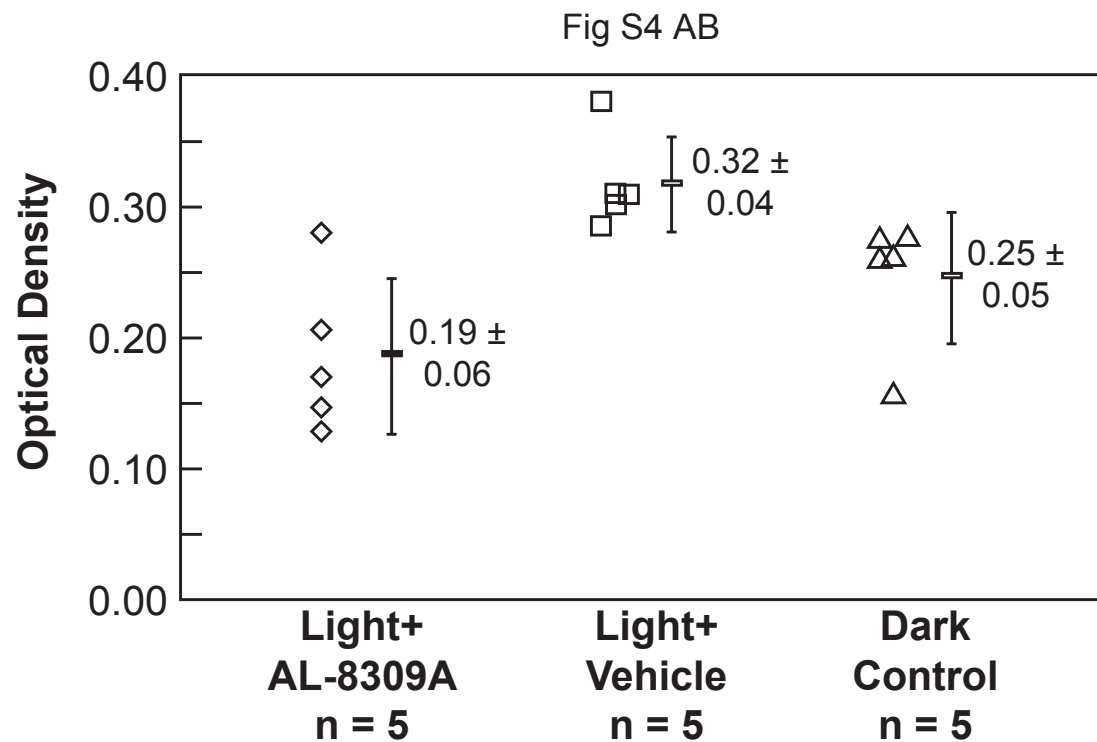
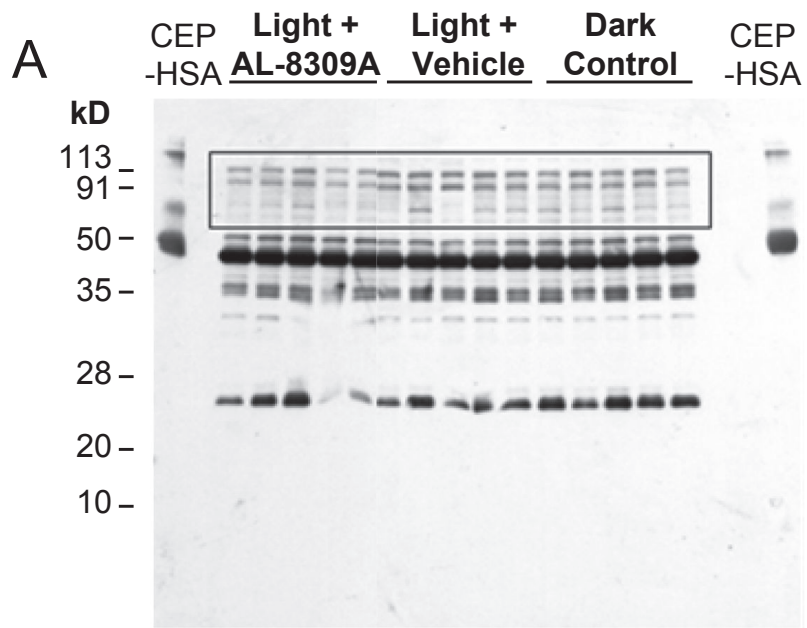


## ***Supporting Figure S4***

***CEP immunoreactivity in rat plasma.*** Western blots of rat plasma with anti-CEP monoclonal antibody are shown from blue light exposed rats pretreated with AL-8309A or vehicle, and from untreated dark control animals. Results from two separate animal experiments are shown: Experiment 1 (A,B), Experiment 2 (C). Each lane represents one animal. CEP immunoreactivity was quantified by densitometry as shown in the graphs where error bars represent standard deviation. CEP modified human serum albumin (CEP-HSA) was used as a positive control. The number of animals assayed in each group is indicated (n). Overall average results are presented in hardcopy Figure 5.



**C**

CEP  
-HSA

Light +  
AL-8309A

Light +  
Vehicle

Dark  
Control

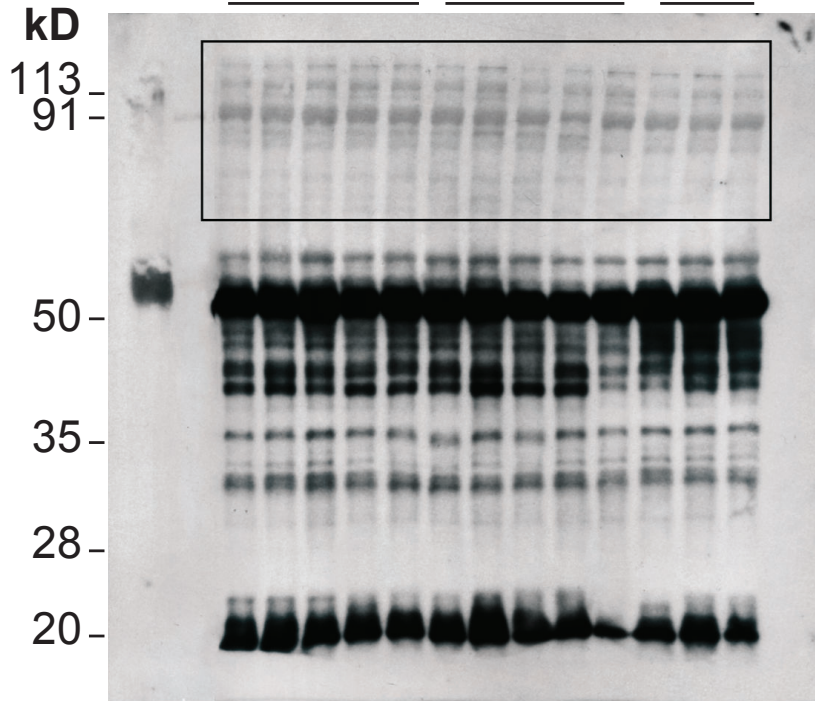


Fig S4 C

