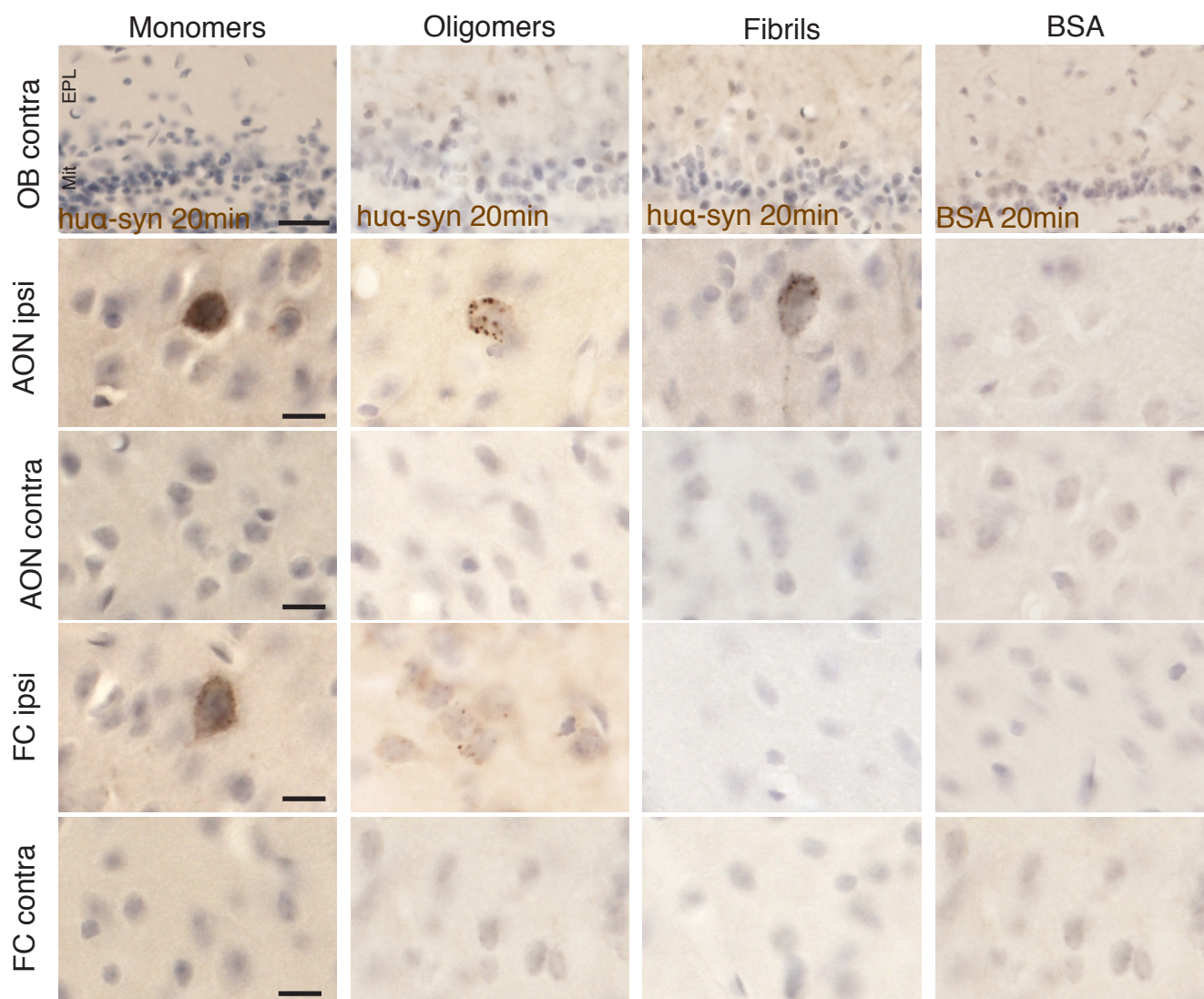


## Supplementary figure 4



### Supplementary figure 4: Human $\alpha$ -synuclein or BSA staining in the anterior olfactory nucleus and frontal cortex 20 min after injection into the olfactory bulb.

Low magnification images of OB (scale bar = 25  $\mu$ m) and high magnification images of contralateral anterior olfactory nucleus (AON) and frontal cortex (FC) (scale bar = 10  $\mu$ m), either ipsilateral (ipsi) or contralateral (contra) to the side of the injection. After injection of monomeric or oligomeric  $\alpha$ -syn, we identified h $\alpha$ -syn-positive cells in some mice in the ipsilateral AON, and rarely in FC. After injection of fibrillar  $\alpha$ -syn, we occasionally detected h $\alpha$ -syn-positive cells in some animals in the ipsilateral AON. When the injected protein was tBSA, we did not find BSA-positive cells in the brain. Mit: mitral layer; EPL: external plexiform layer.