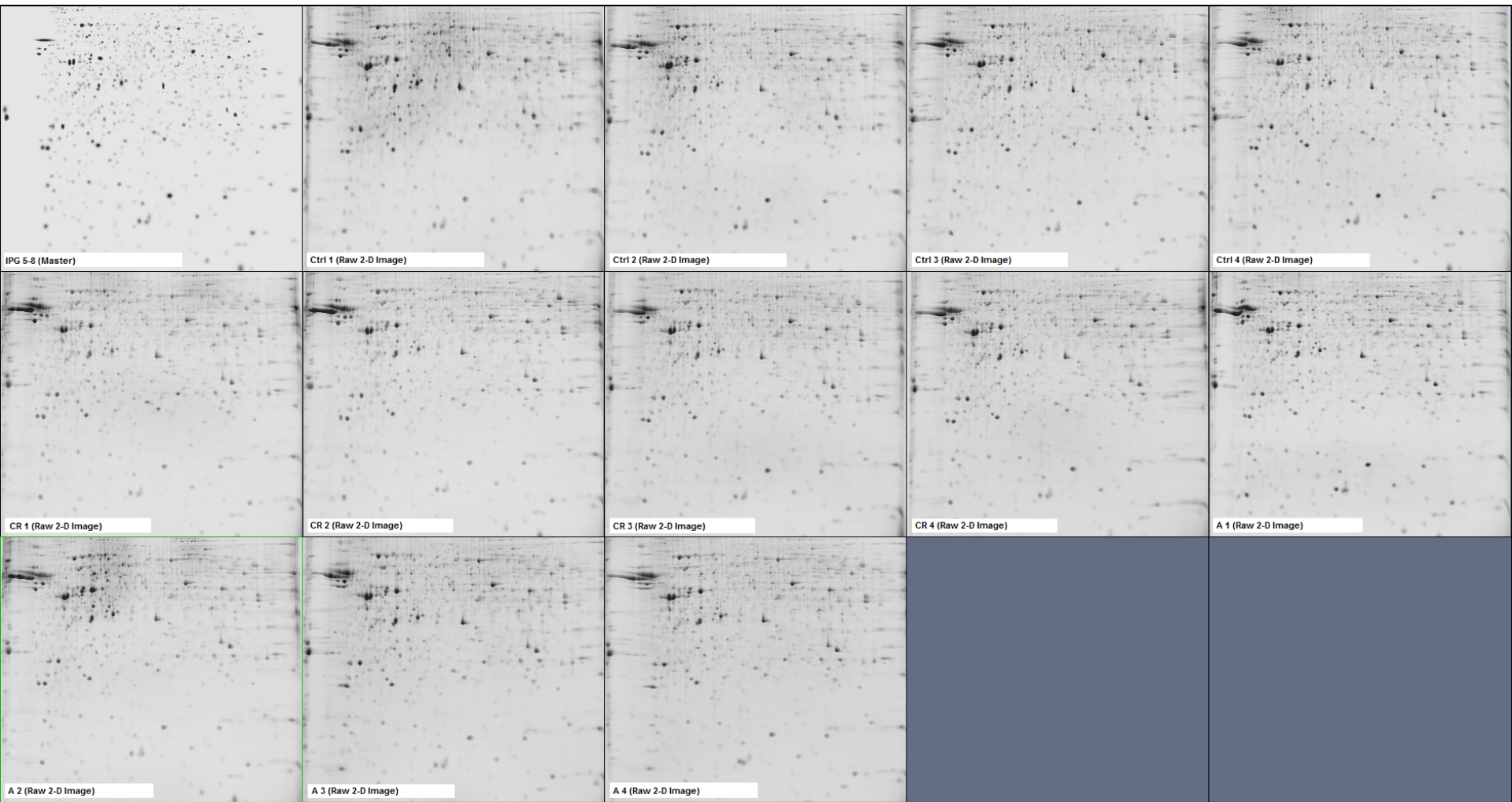
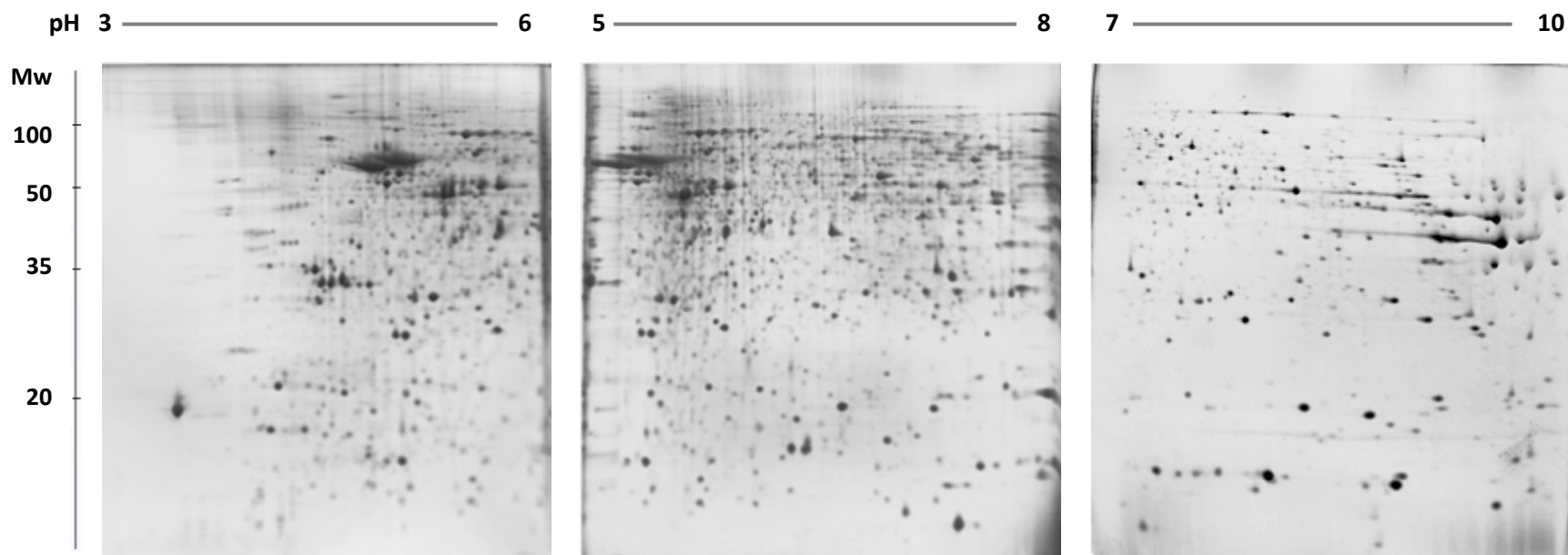


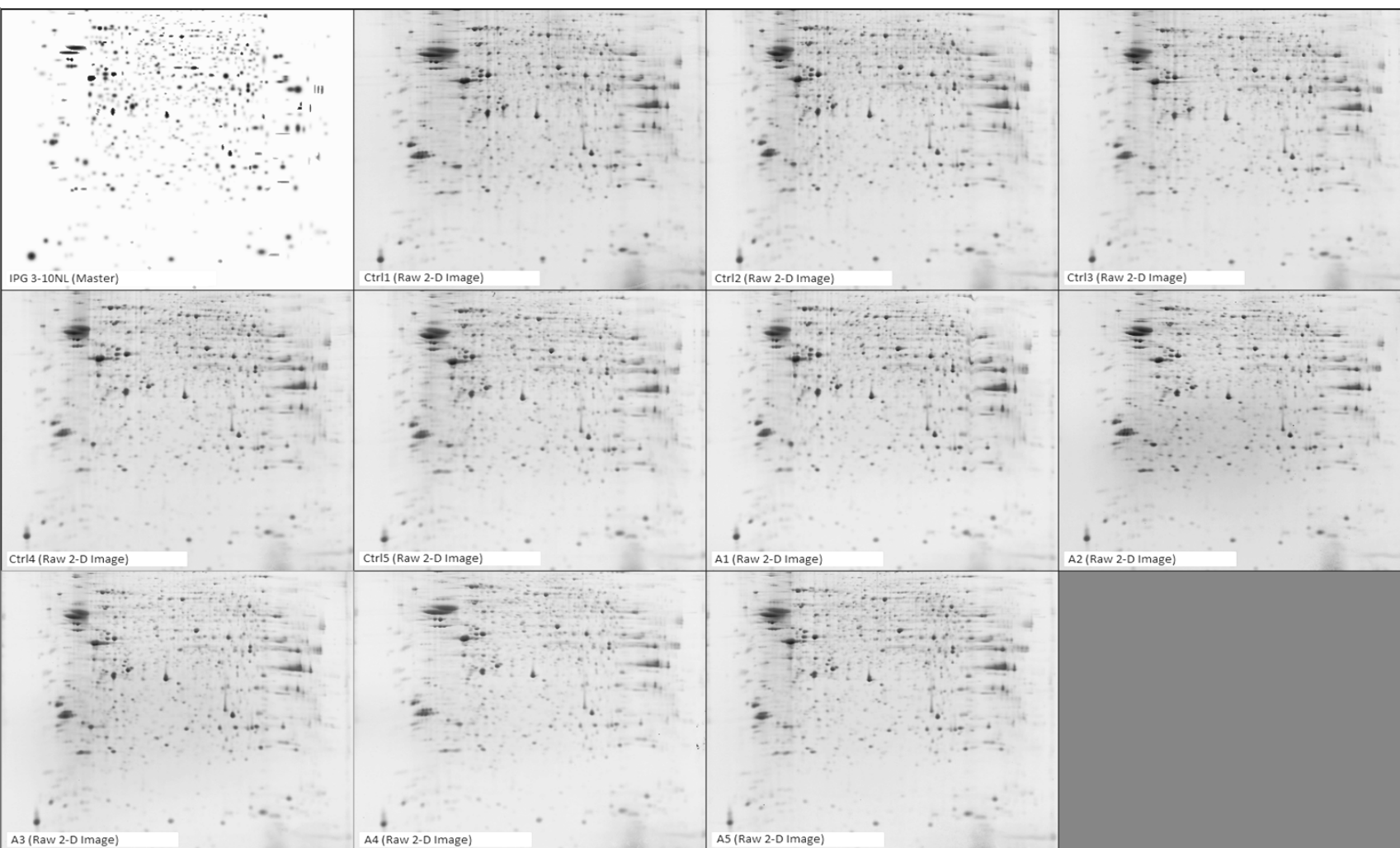
Suppl. Figure 1 Experimental dataset of 12 gel images using IPG 3-6 strips. Each gel image is obtained from an independent animal ($n = 4$ per group). A = anorexic tumor-bearing mice, CR = pair-fed mice, and Ctrl = control free-fed mice.



Suppl. Figure 2 Experimental dataset of 12 gel images using IPG 5-8 strips. Each gel image is obtained from an independent animal ($n = 4$ per group). A = anorexic tumor-bearing mice, CR = pair-fed mice, and Ctrl = control free-fed mice.



Suppl. Figure 3 Representative gels of hypothalamic proteins (200 μ g) separated on 3 different narrow pH range IPG strips (IPG 3-6, IPG 5-8, and IPG 7-10), with overlapping areas marked at the bottom.



Suppl. Figure 4 Experimental dataset of 10 gel images from the independent experiment using IPG 3-10NL strips. Each gel image is obtained from an independent animal ($n = 5$ per group). A = anorexic tumor-bearing mice, Ctrl = control free-fed mice.