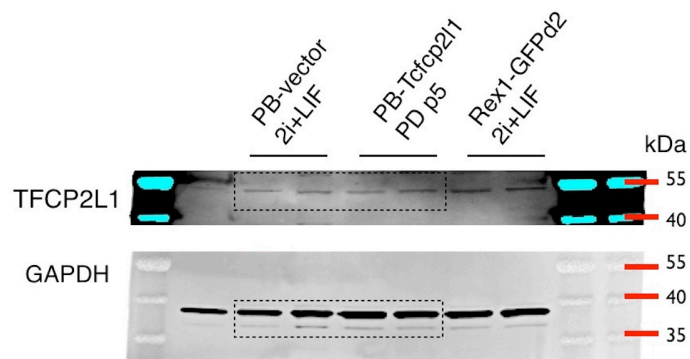


# Source data related to Figure 4B



Un-cropped Western blot of Rex1GFPd2 cells un-transfected or transfected with an empty vector (PB-vector) cultured in 2i+LIF, and PB-Tfcp2l1 cells cultured in PD for 5 passages. For each line 2 biological replicates were loaded. GAPDH served as a loading control. Blots were imaged on a LI-COR Odyssey Imager.