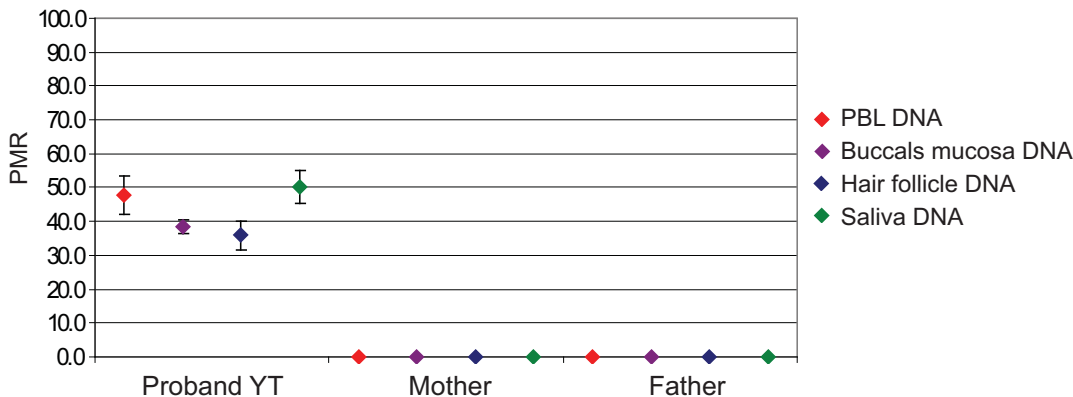
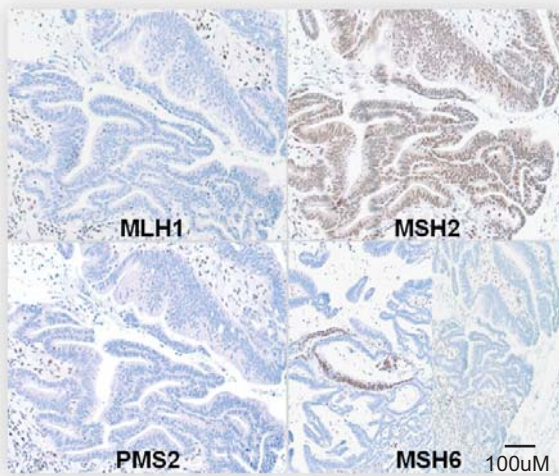


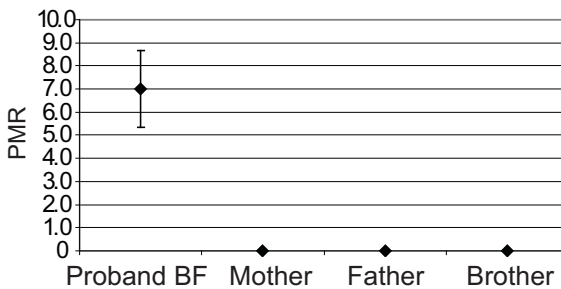
## *MLH1* methylation levels detected by qMSP in YT pedigree



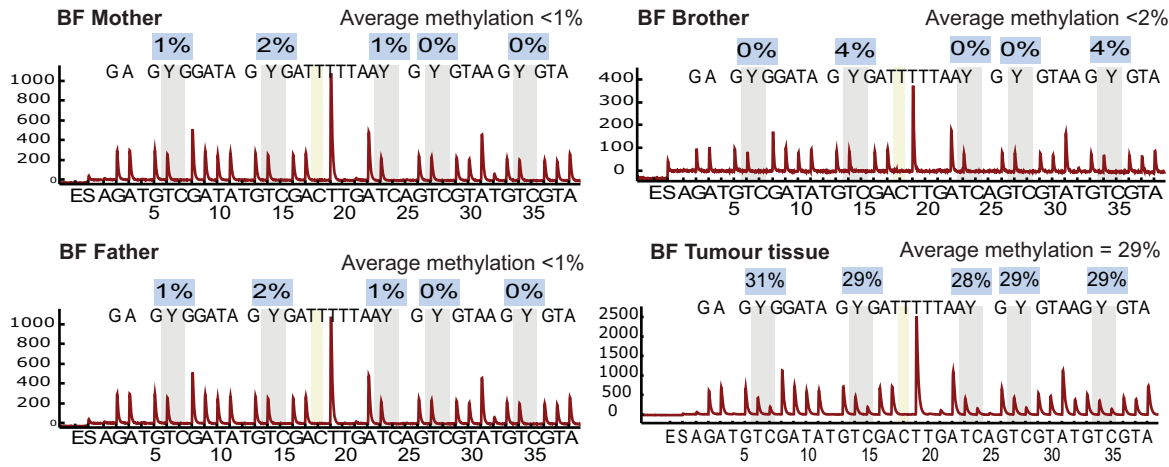
**A** Immunohistochemistry of the mismatch repair proteins in the colorectal tumour of Proband BF



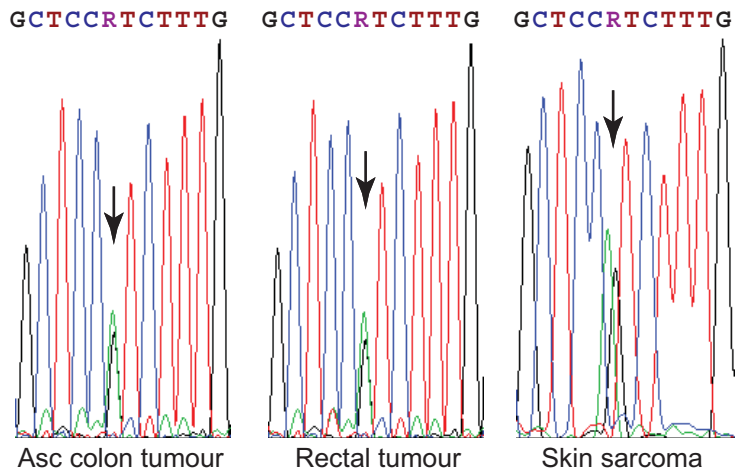
**B** *MLH1* methylation levels detected in lymphoblastoid cells by qMSP in BF pedigree



**C** *MLH1* methylation status in BF and family by bisulphite pyrosequencing



A Retention of heterozygosity at the *MLH1* c.A655G SNP in tumours from Patient A



B Allelic methylation of *MLH1* C-region in Patient A

