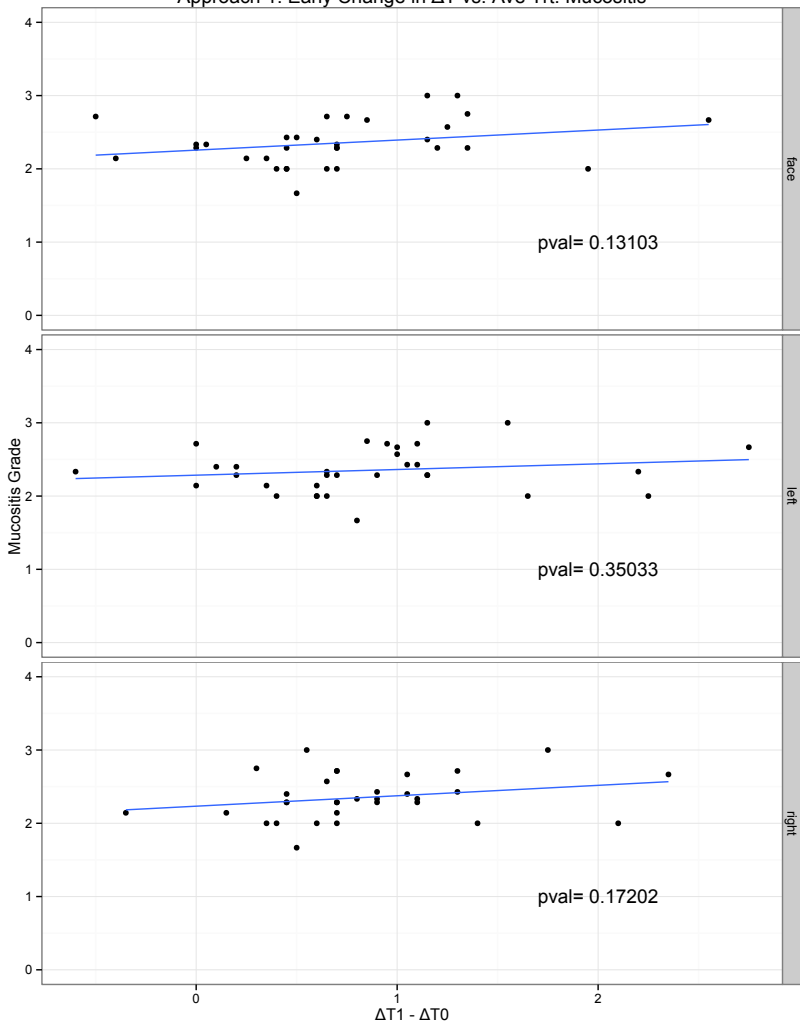


Approach 1: Early Change in ΔT vs. Ave Trt. Mucositis



Supp. Figure 2- Using approach #1, the association between early change in Temperature ΔT (i.e. $\Delta T1 - \Delta T0$, where $\Delta T1$ is the measurement at the end of cycle 1, and $\Delta T0$ is the baseline measurement) is not statistically significant, based on separate linear regression models for each image type. Top graph represents measurements made from the frontal aspect of the face. The middle and bottom graphs represent measurements taken from the lateral aspects of face.