

Figure W1. Purified fractions of CovX-body, F(ab)₂, and Fab run on a Bioanalyzer protein electrophoresis chip (Agilent Technologies).

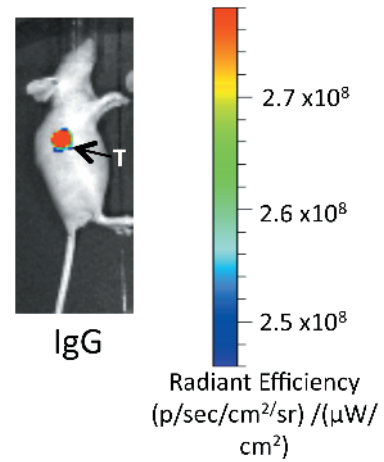


Figure W2. A representative image of IgG tumor uptake 8 hours after dosing. Clear uptake into the tumor (T) is seen.

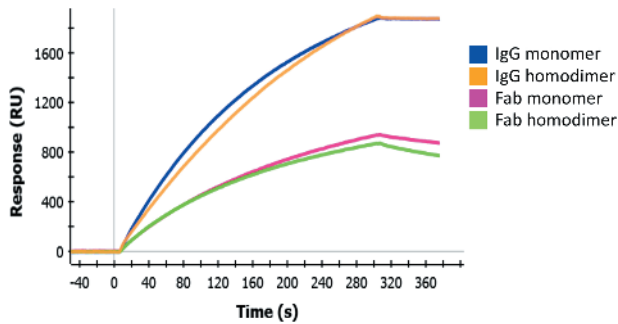


Figure W4. Anti-idiotype capture levels of anti-FGFR4 monomer and homodimer compounds to measure multivalent interactions. Comparable levels of monomer and homodimer constructs were captured with anti-idiotype CVX-2000.

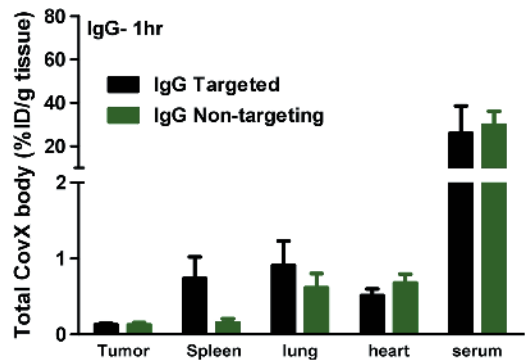


Figure W3. Tumor and normal tissue uptake of IgG 1 hour post dose.