

Supporting Information

Cowansage et al. 10.1073/pnas.1304665110

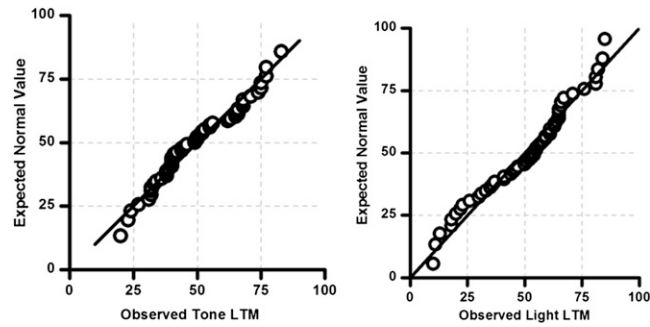


Fig. S1. Quantile–quantile plots depict actual freezing vs. expected normal values for tone (Left) and light (Right).

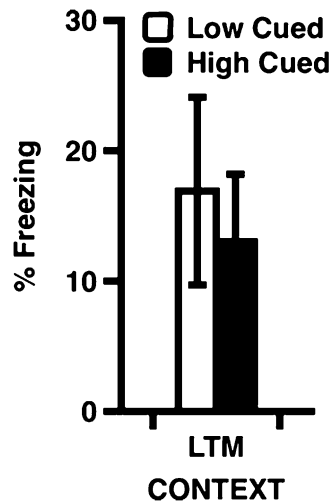


Fig. S2. Mice identified as expressing stable high versus low cued long-term memory (LTM) did not show a corresponding significant difference in context LTM.

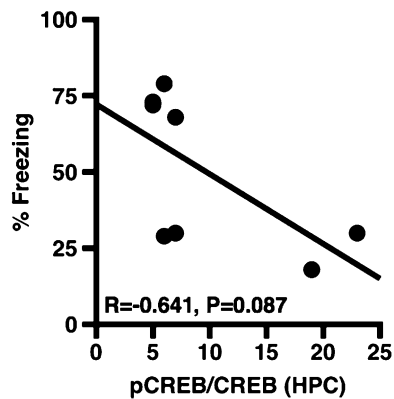


Fig. S3. Within a group of individual rats ($n = 8$), hippocampal phospho-cAMP response element binding protein (pCREB)/CREB ratios trended toward being inversely related to their prior composite measures of cue-elicited LTM. (Pearson's correlation, $R = -0.641$, $P = 0.085$).

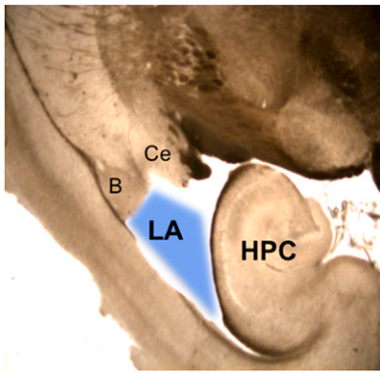


Fig. S4. Horizontal cross-section showing example of histology after fresh extraction of lateral amygdala (LA) tissue. Blue region indicates the area removed for protein analysis. Surrounding structures were left intact (basal amygdala, B; central amygdala, Ce; hippocampus, HPC).