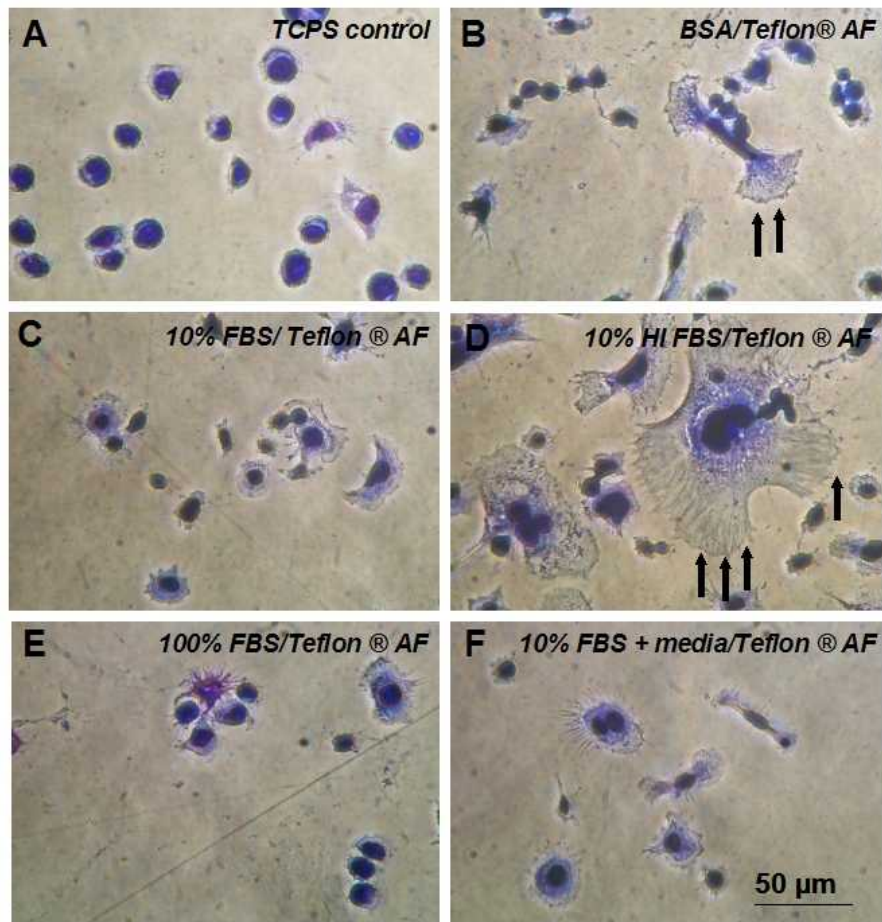


*“Albumin is permissive to macrophage attachment”* - figures with captions



**Supplemental Figure 1.** Phase contrast photomicrographs of fixed, stained IC-21 cells one hour after seeding onto Teflon® AF surfaces exposed to preconditioning treatments as indicated. Cells were seeded at a density of 500 cells/mm<sup>2</sup>. Bold arrows indicate membrane ruffling. Images are representative of multiple fields ( $\geq 3$ ) and multiple replicates ( $\geq 2$ ) for each test condition. Scale bar shown in F is relevant for all images. Images are labeled with letters to simplify references in the text.