

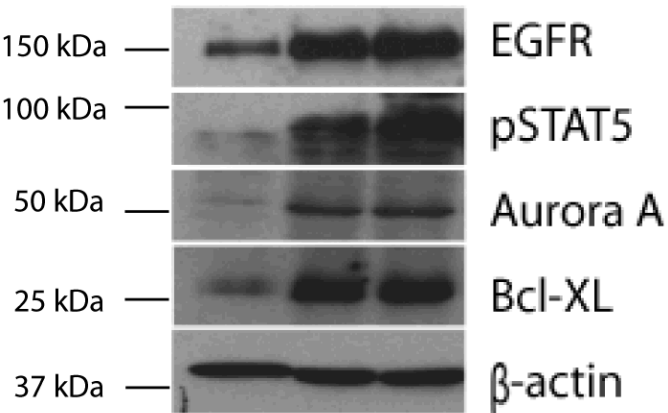
Type of file: figure

Label: Figure 1

Filename: IJC_27690_sm_SuppFigS1.tif

U87 cells
 Δ EGFR levels

medium
high
superhigh

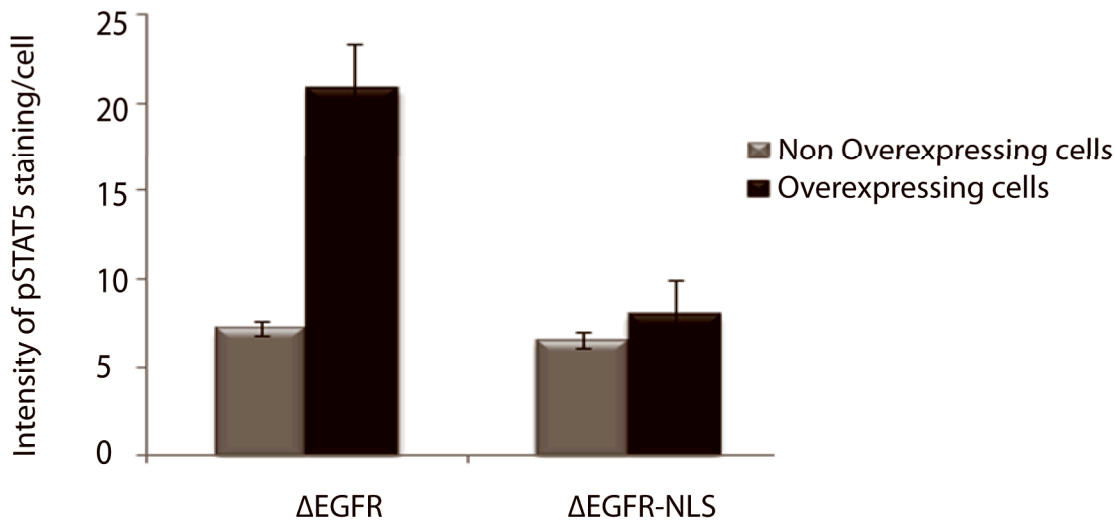


Type of file: figure

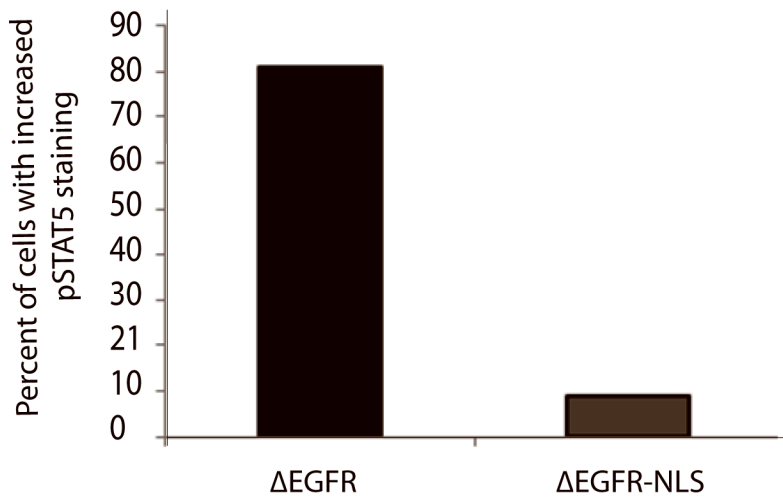
Label: Figure 2

Filename: IJC_27690_sm_SuppFigS2.tif

A



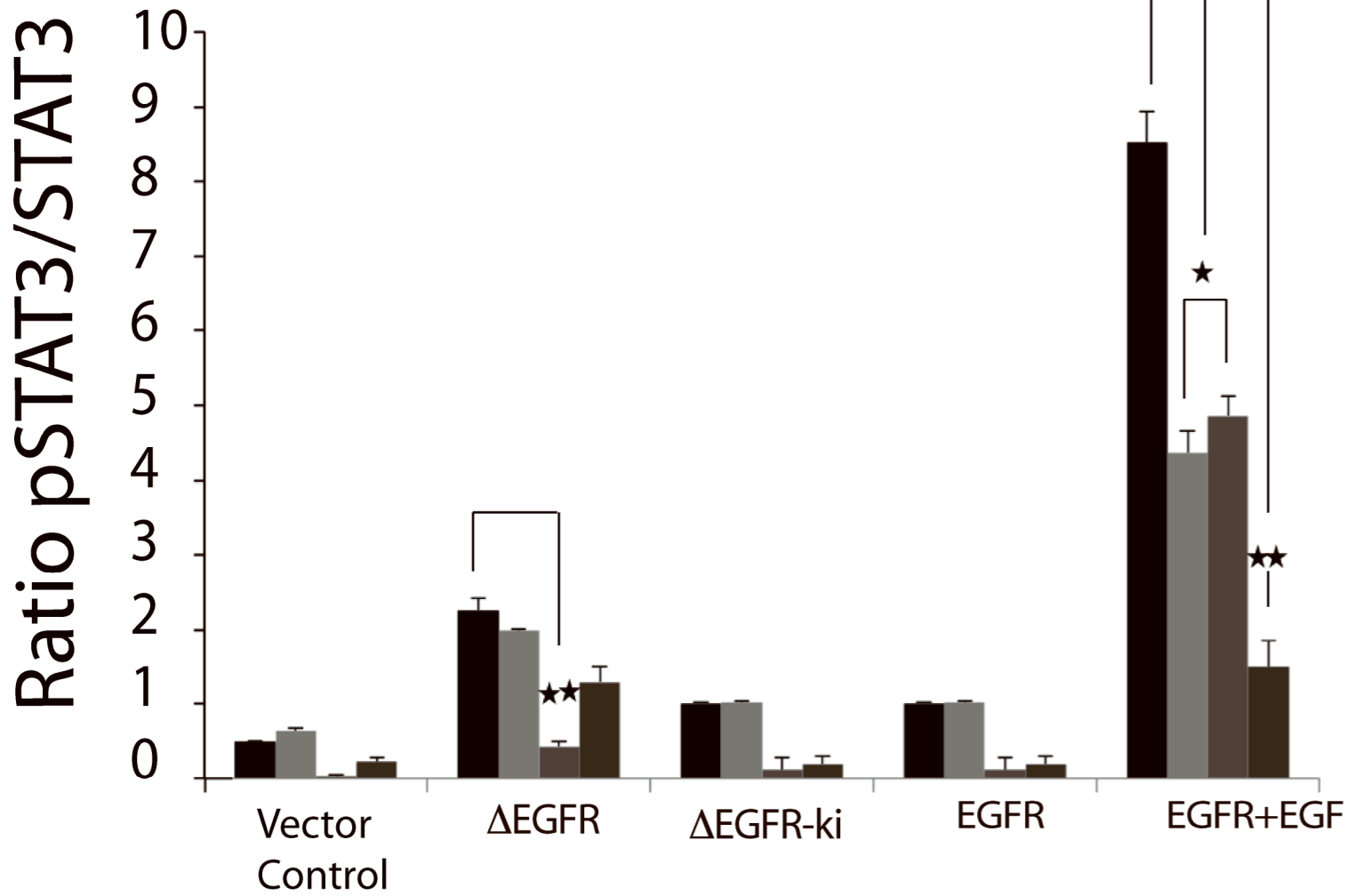
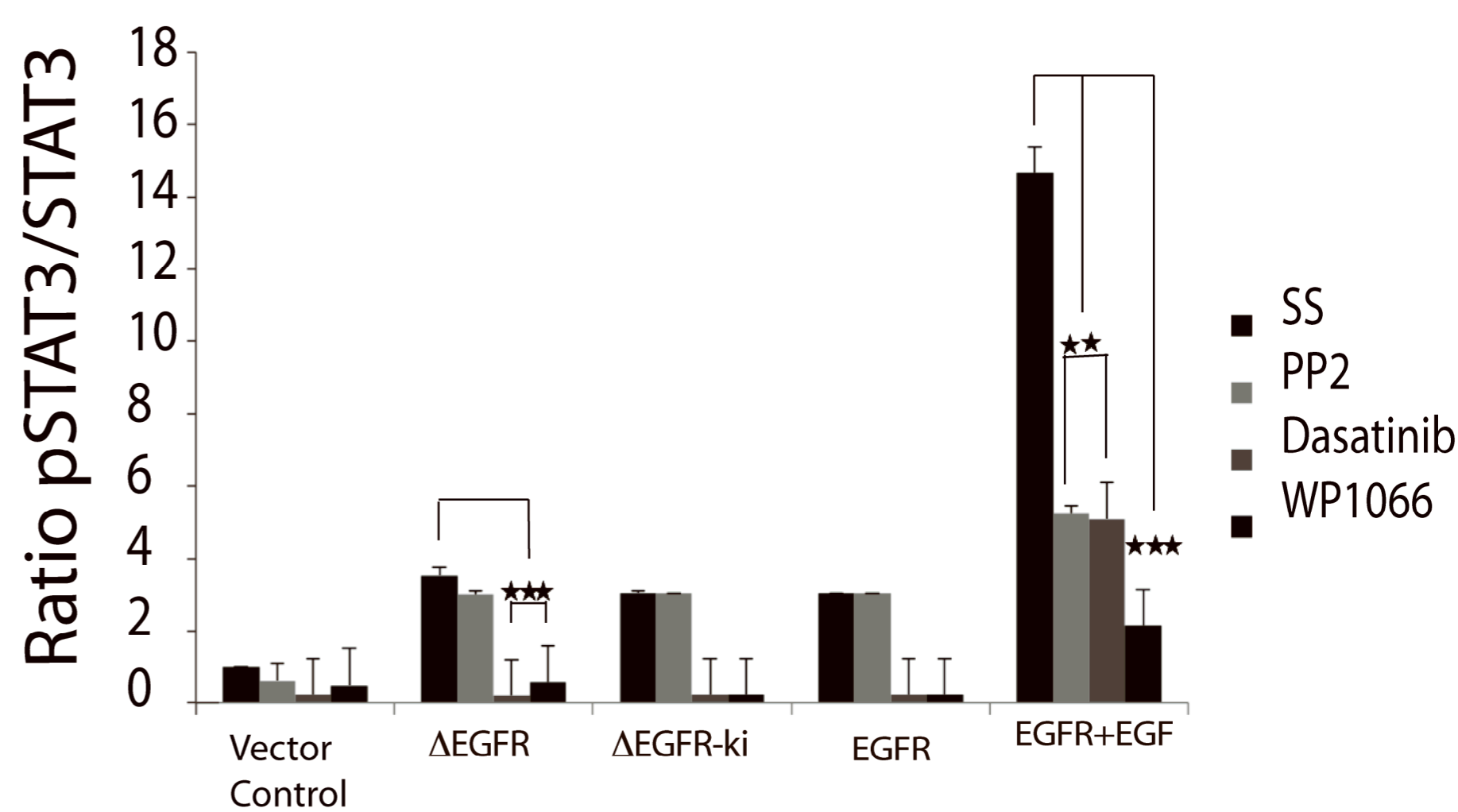
B



Type of file: figure

Label: Figure 3

Filename: IJC_27690_sm_SuppFigS3.tif

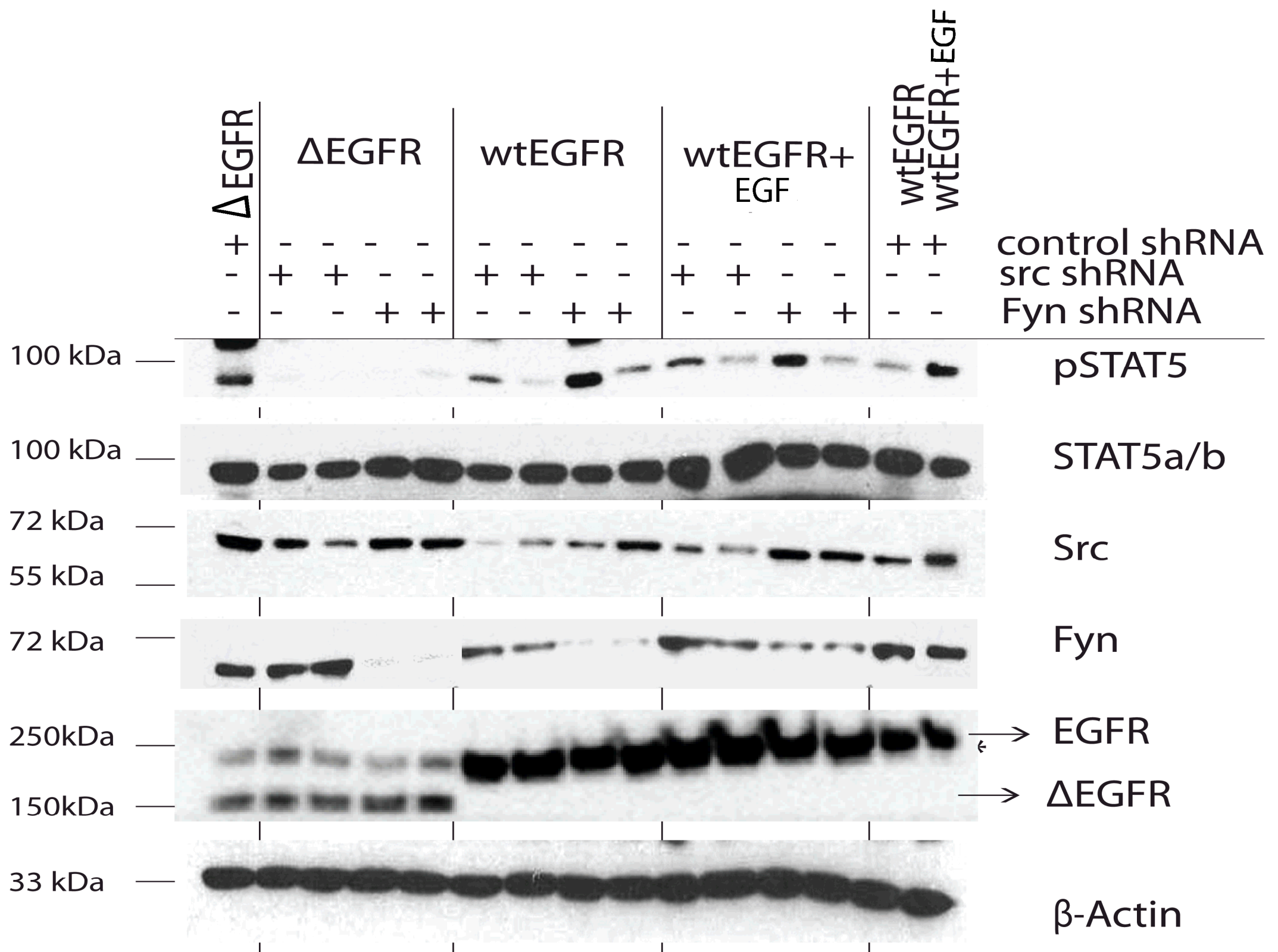
LNZ308**LN428**

Type of file: figure

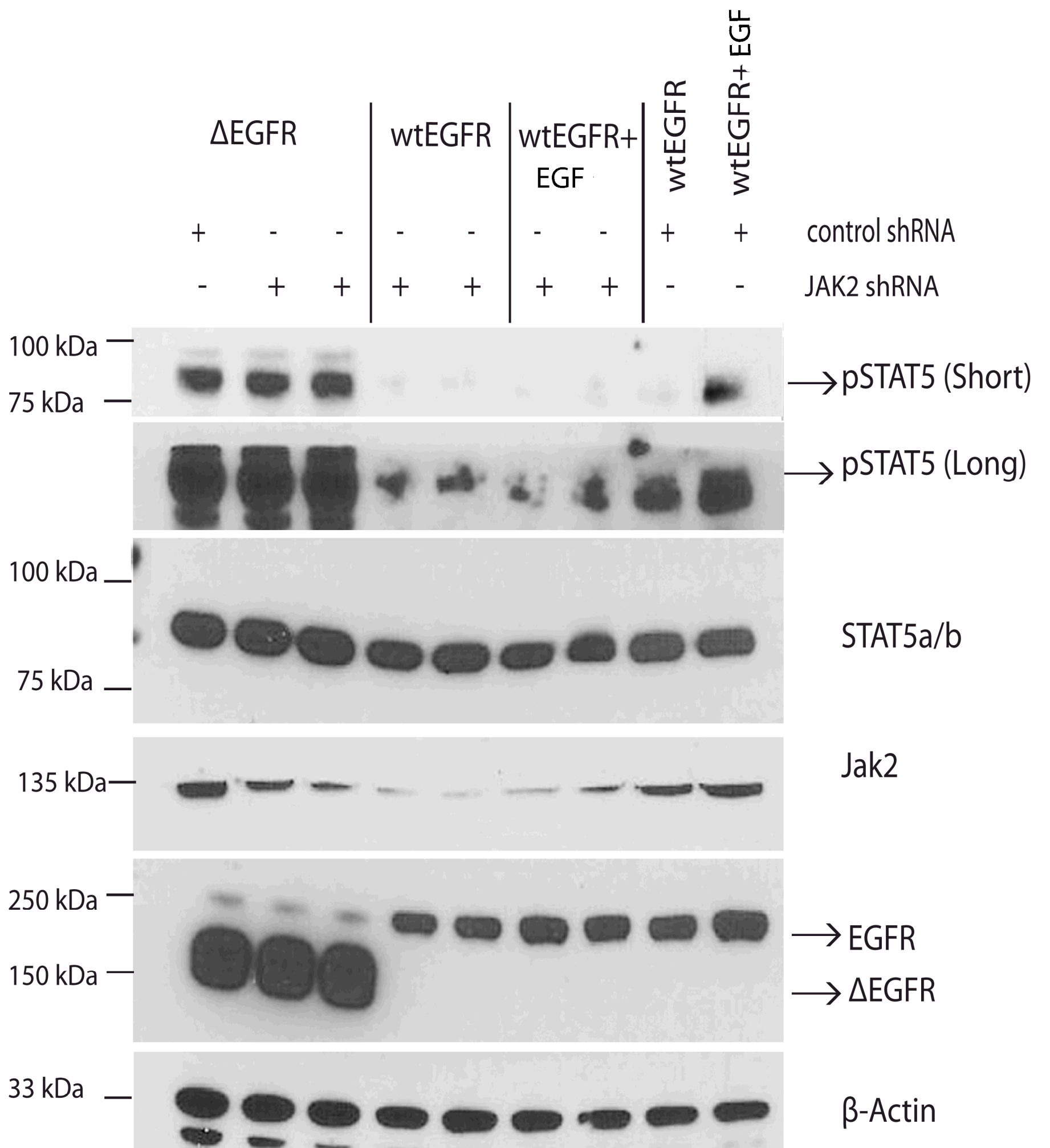
Label: Figure 4

Filename: IJC_27690_sm_SuppFigS4.tif

A



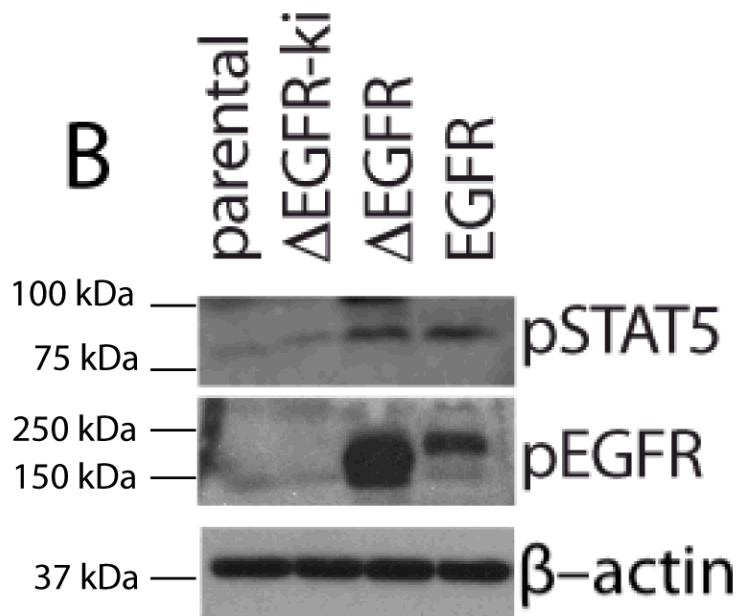
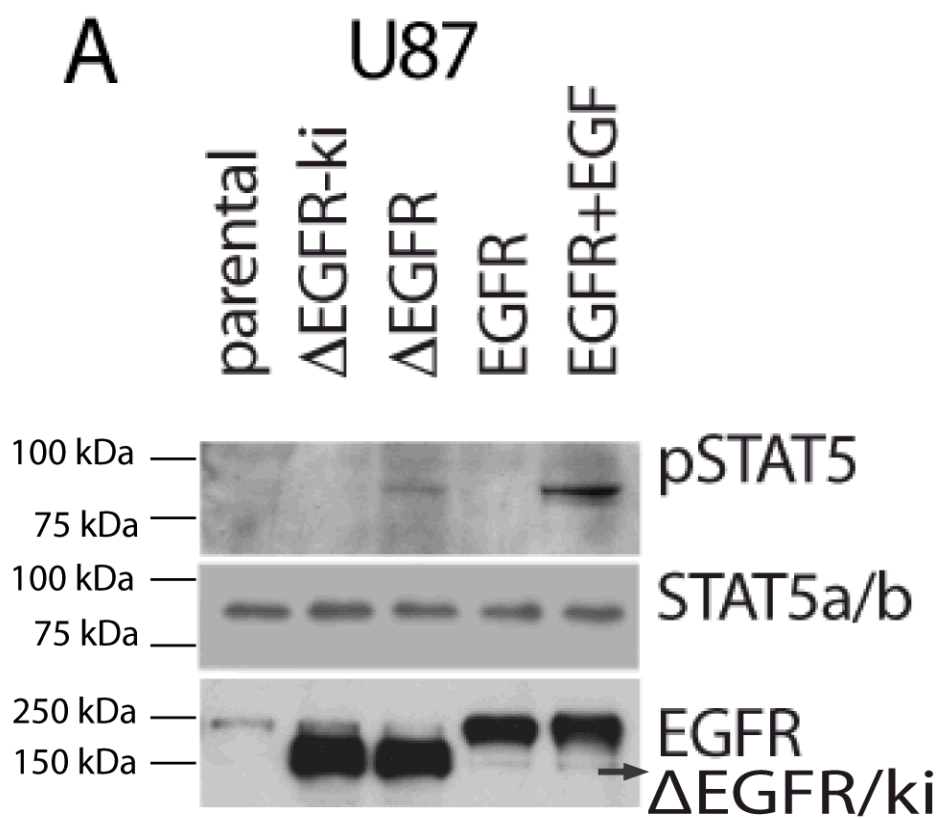
B



Type of file: figure

Label: Figure 5

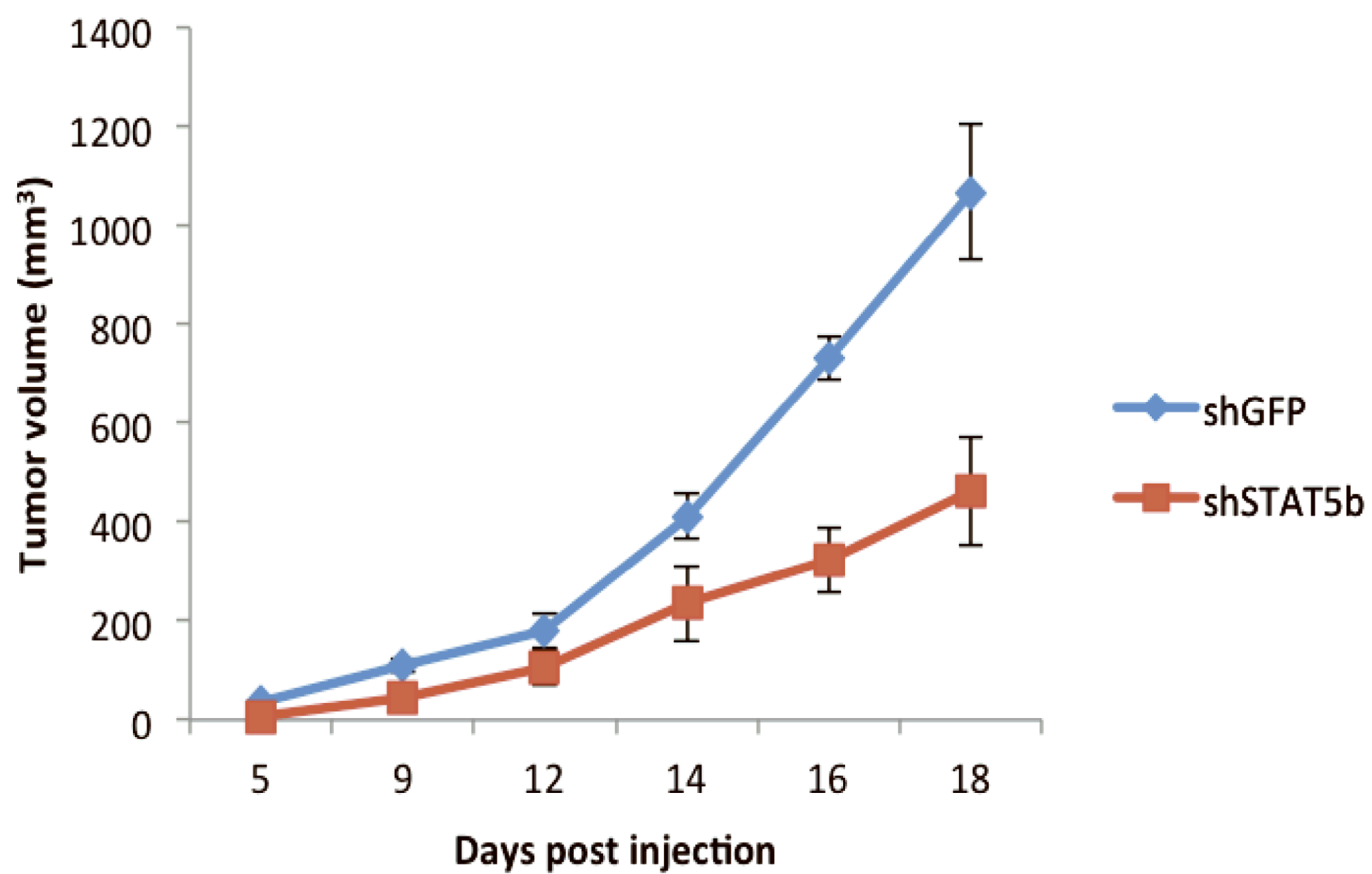
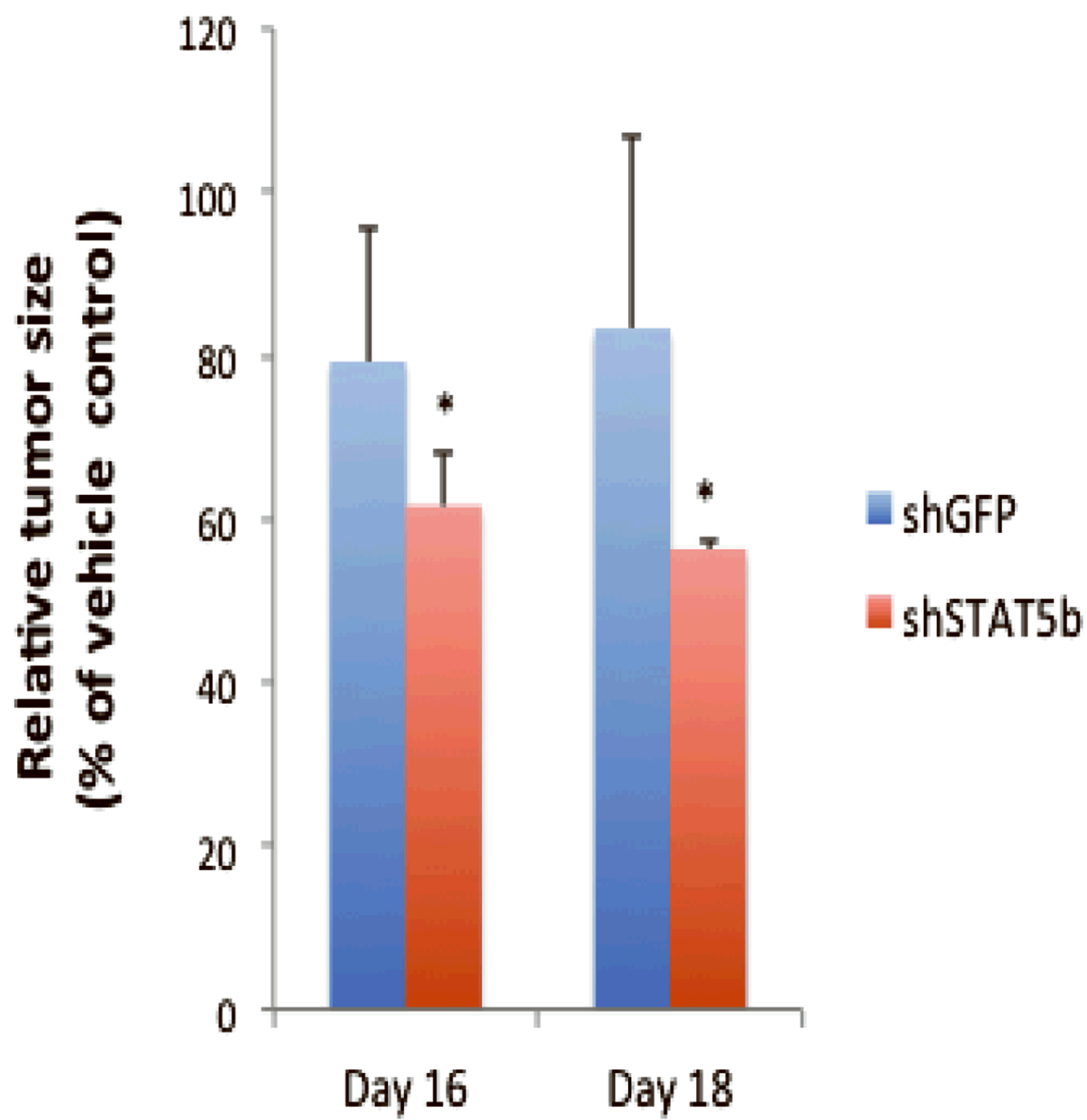
Filename: IJC_27690_sm_SuppFigS5.tif



Type of file: figure

Label: Figure 6

Filename: IJC_27690_sm_SuppFigS6.tif

A**B**

Type of file: table

Label: Table 7

Filename: IJC_27690_sm_SuppTabS7.doc

Column1	U87	Column2	LNZ308	Column3	LN428	Column4
Locus	1	2	1	2	1	2
AMEL	105.95	0	106.07	0	110.9	105.8
D31358	134.77	130.82	127.15	0	134.3	130.56
TH01	177.59	0	177.8	0	179.44	172.38
D13317	189.17	0	197.06	189.14	176.33	0
D81179	217.94	213.86	225.88	205.6	224.77	220.73
D7820	225.88	221.8	237.94	229.81	236.93	220.58
TPOX	269.34	0	273.39	269.13	280.8	268.08
D16539	295.55	0	295.4	282.52	281.31	0
D1851	306.51	0	330.33	306.3	323.97	308.36
CSF1PO	341.65	337.42	345.83	341.6	336.27	0
Penta						
	433.1	408.7	418.6	408.79	428	0
D						
Penta E	433.64	396.51	412.74	396.73	444	433.36