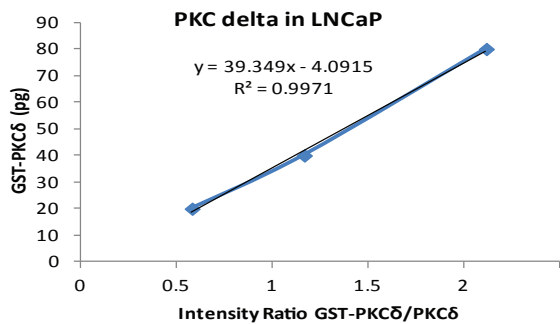
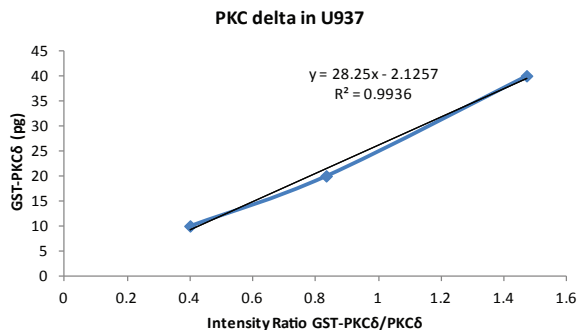


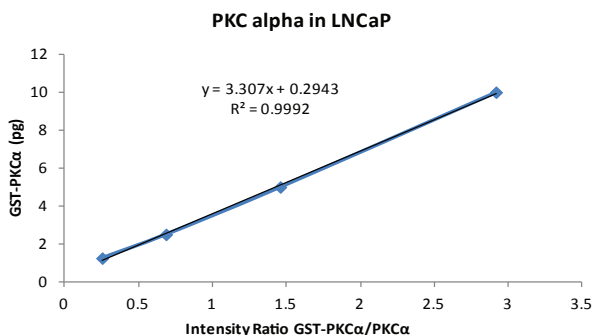
Supplemental material:
 Representative data of linear regression analysis for PKC isoform quantitation



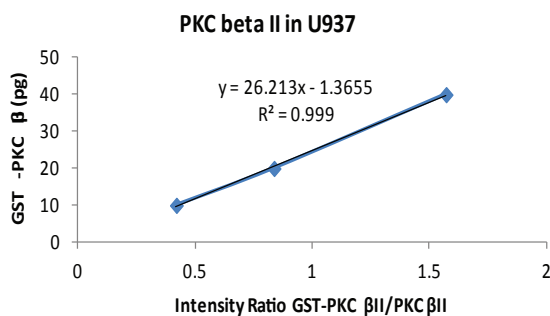
x=1, y=35.257pg, 20ng lysate
 MW GST-PKC delta:104; PKC delta:77.5
 26.273 pg in 20 ng Lysate, 1.314 pg/ng lysate



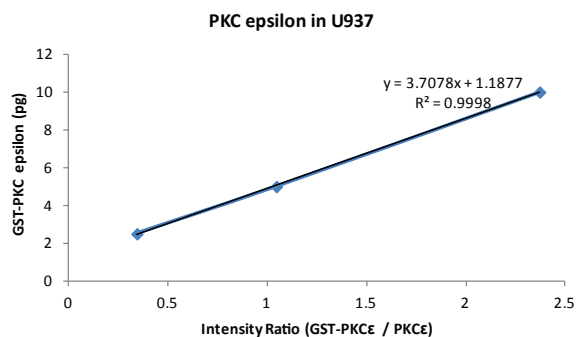
x=1, y=26.124pg, 10 ng lysate
 MW GST-PKC delta:104; PKC delta:77.5
 19.467 pg in 10 ng Lysate, 1.947 pg/ng lysate



x=1, y=3.601pg, 40 ng lysate
 MW GST-PKC alpha:103; PKC delta:76.8
 2.685 pg in 40 ng Lysate, 0.067 pg/ng lysate



x=1, y=24.848pg, 20ng lysate
 MW GST-PKC beta II:105; PKC beta II: 77
 18.222 pg in 20 ng Lysate, 0.911 pg/ng lysate



x=1, y=4.895pg, 88ng lysate
 MW GST-PKC epsilon:110; PKC epsilon: 83.6
 3.720 pg in 88 ng Lysate, 0.042 pg/ng lysate

Supplemental Table: PKC isoform quantitation in LNCaP and U937 cells

Protein	Lysate	Run#	pg / ng Lysate	Mean	SD	%CV
PKC alpha	LNCaP	Run1	0.064			
PKC alpha	LNCaP	Run2	0.067	0.064	0.003	4.7%
PKC alpha	LNCaP	Run3	0.061			
PKC alpha	U937	Run1	<0.009			
PKC alpha	U937	Run2	<0.009	<0.009	N/A	N/A
PKC alpha	U937	Run3	<0.009			
PKC beta II	U937	Run1	0.835			
PKC beta II	U937	Run2	1.175	0.974	0.178	18.3%
PKC beta II	U937	Run3	0.911			
PKC beta II	LNCaP	Run1	< 0.062			
PKC beta II	LNCaP	Run2	< 0.030	< 0.062	N/A	N/A
PKC beta II	LNCaP	Run3	< 0.062			
PKC delta	LNCaP	Run1	1.314			
PKC delta	LNCaP	Run2	1.071	1.314	0.175	13.3%
PKC delta	LNCaP	Run3	1.395			
PKC delta	LNCaP	Run4	1.475			
PKC delta	U937	Run1	2.050			
PKC delta	U937	Run2	1.730	1.909	0.163	8.6%
PKC delta	U937	Run3	1.947			
PKC epsilon	U937	Run1	0.043			
PKC epsilon	U937	Run2	0.043	0.043	0.001	2.9%
PKC epsilon	U937	Run3	0.045			
PKC epsilon	U937	Run4	0.042			
PKC epsilon	LNCaP	Run1	≤0.022			
PKC epsilon	LNCaP	Run2	≤0.032	≤0.032	N/A	N/A
PKC epsilon	LNCaP	Run3	<0.032			