

Fig. S1. Planting design for four-way mixtures of *Arabidopsis* genotypes.

A	B	C	D	A	B	C	D	A	B	C	D
C	D	A	B	C	D	A	B	C	D	A	B
B	A	C	D	B	A	C	D	B	A	C	D
C	D	B	A	C	D	B	A	C	D	B	A
B	A	D	C	B	A	D	C	B	A	D	C
D	C	B	A	D	C	B	A	D	C	B	A
A	B	D	C	A	B	D	C	A	B	D	C
D	C	A	B	D	C	A	B	D	C	A	B
C	A	B	D	C	A	B	D	C	A	B	D
B	D	C	A	B	D	C	A	B	D	C	A
A	B	D	C	A	B	D	C	A	B	D	C
D	C	A	B	D	C	A	B	D	C	A	B
A	B	D	C	A	B	D	C	A	B	D	C
C	A	B	D	C	A	B	D	C	A	B	D
B	D	C	A	B	D	C	A	B	D	C	A

Fig. S2. Mean seed production per plants of each genotype under high or low nutrient treatment for each experiment.

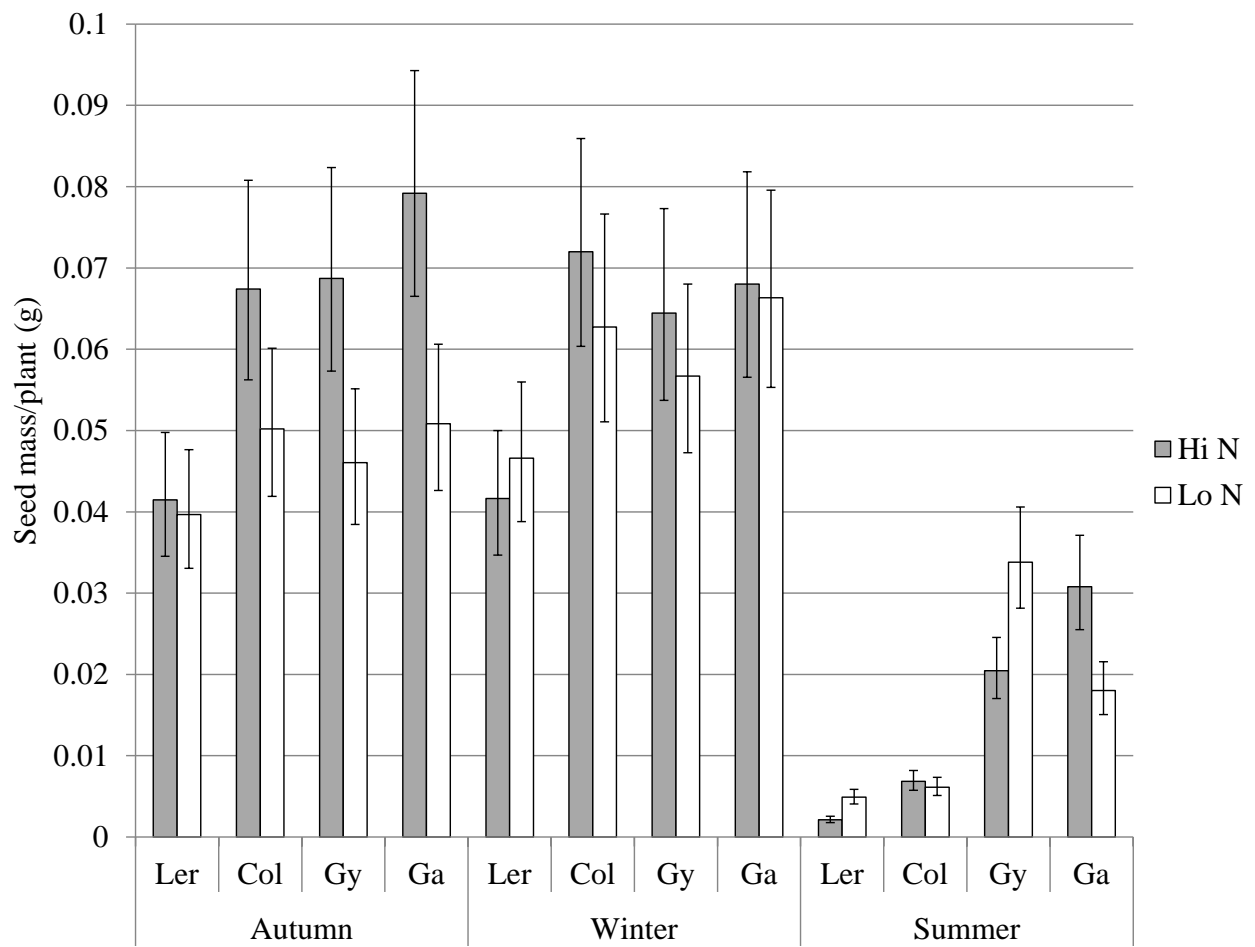


Fig. S3. Mean days taken to flower for four *Arabidopsis* genotypes grown in monoculture and mixture in a four-way mixture experiment.

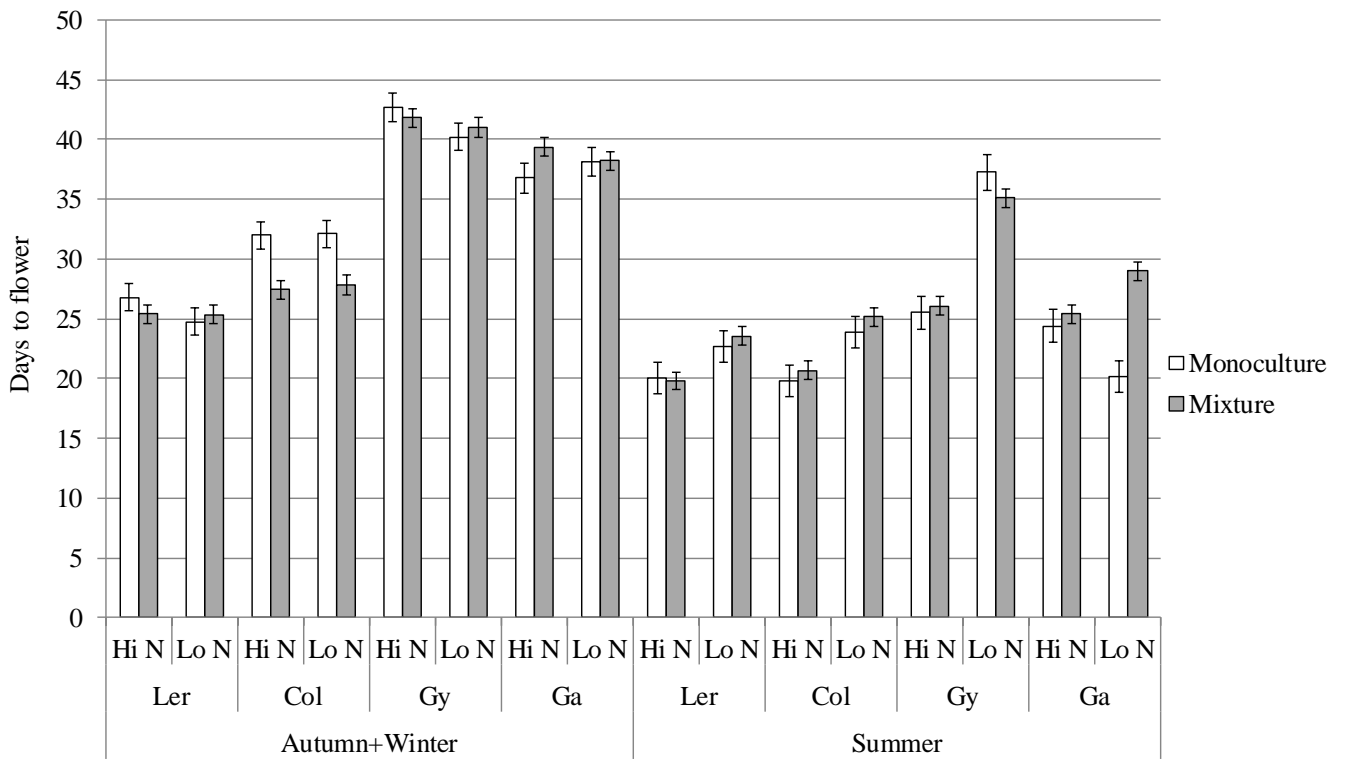


Fig. S4. Mean plant height for each genotype grown in each experiment.

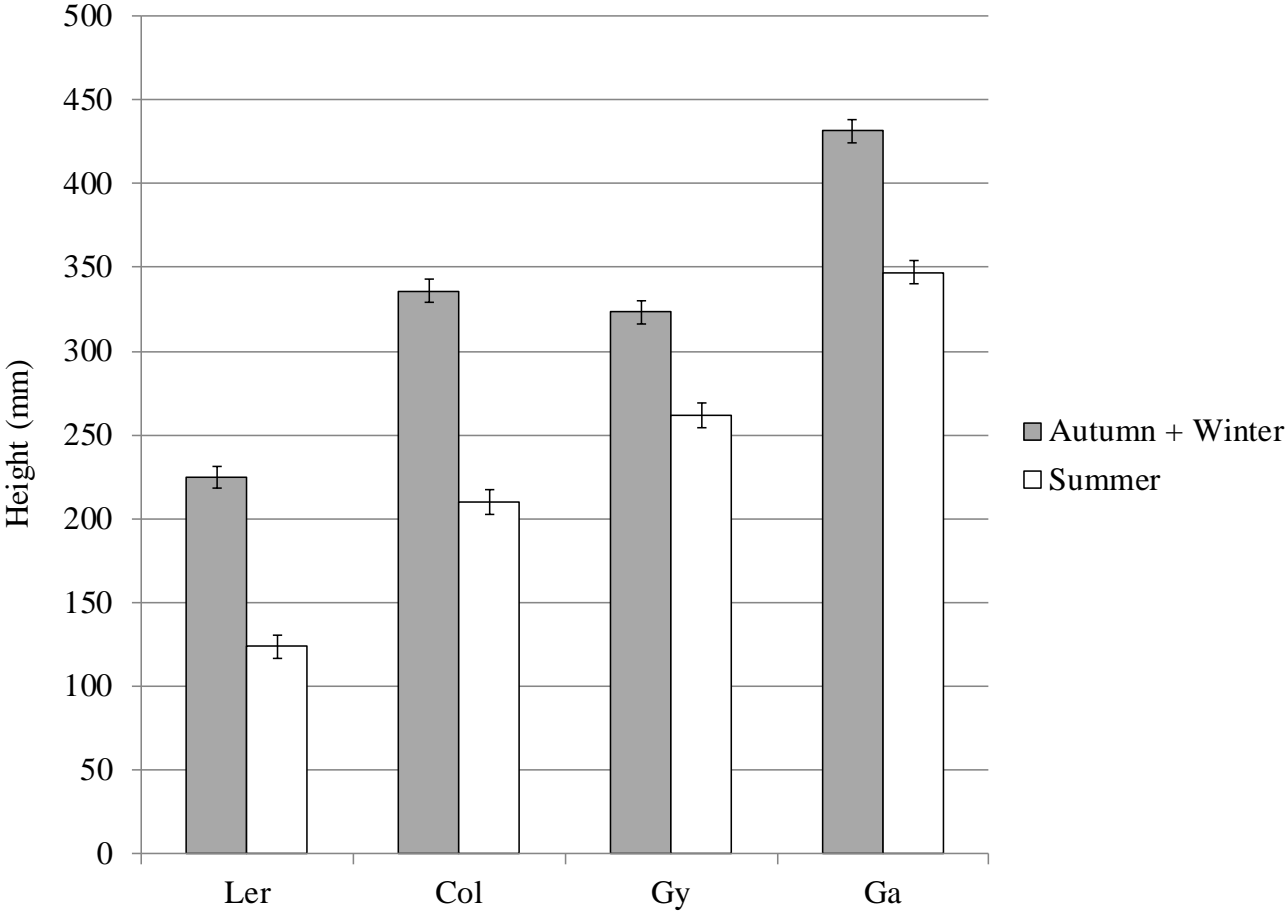


Fig. S5. Mean seed production in mixtures and monocultures in the pair-wise interaction experiments.

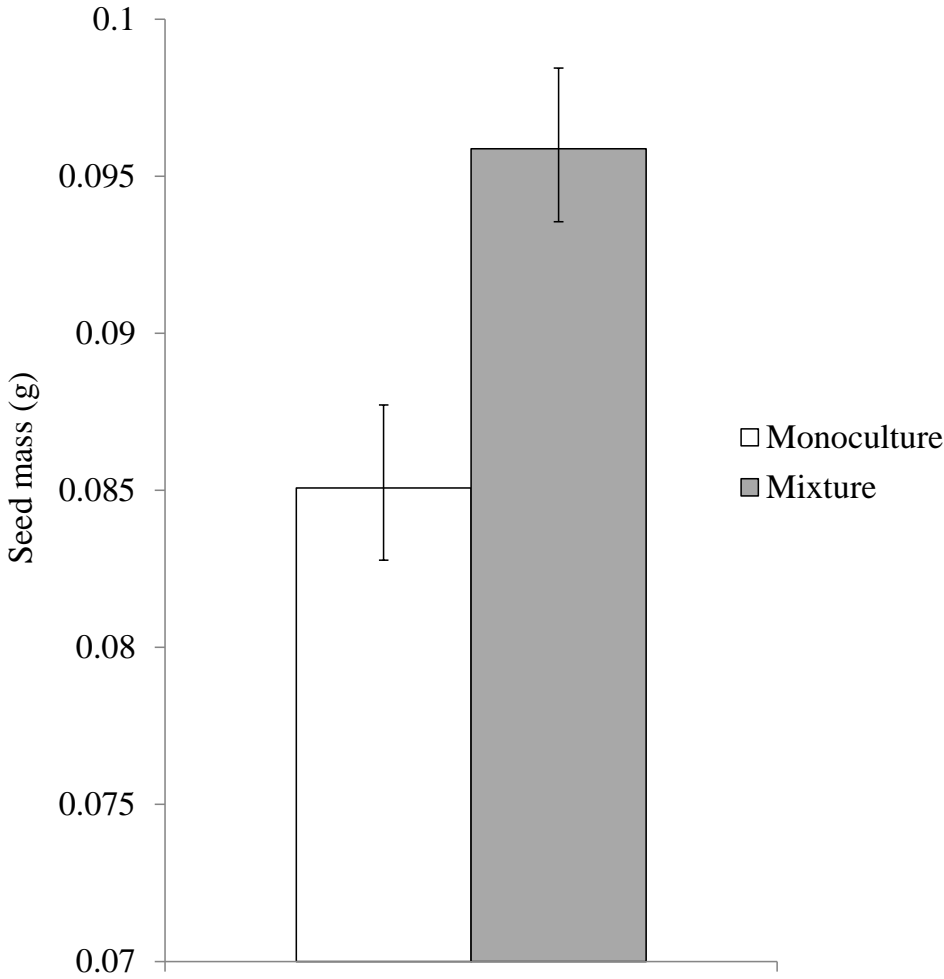


Fig. S6: Seedling root growth after ten days growth on 1/2 MS plates.

