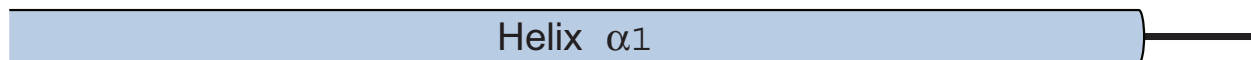


Supplemental Figure 1



SACE MNEAD-----VTKFVNNARKTLTDAQLLCSANLRIVDIKKKLSSWQLSISKLNFLIV 53
 KLTH MNEAV-----IEKLENSRKFLTGAKLICQESNDHLTTTKLRIREWQKFQSKLHFVLD 53
 KLLA MSDAATTIPSDEIDKLWNKARNQLVEAQVECEESLKILSKVRTEMDSSQKSRFKLKFILN 60



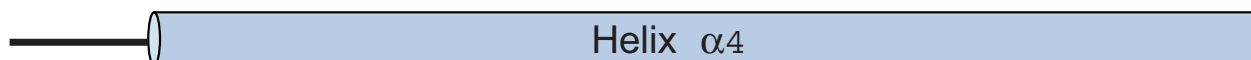
SACE GLRQQGKFLYTIK-EGIGTKLIQKQWNQAVLVVLVDEMKYWQYEITSKVQRLDGI VNEL 112
 KLTH CIQQQTKFLSEILLREGIGRNLI EEEWSQTVLVRLVNDMKFWQNEITKMMNKLDNITNEI 113
 KLLA CLVNQVEFFKNIMLEKCI STELIDNEWSKLVLVEIVNDVSYWQNEITTKMKILOGTKYDL 120



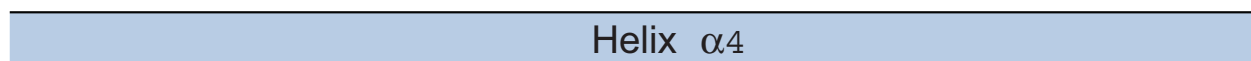
SACE SISEKDDTDPSKLGDI SRDNVLLNDKLKEVPVIERQIENIKLQYENMVRKVNKELIDT 172
 KLTH DQQHN-----SKLGD FISRSSHILDSKLINEIPTIRKQVENITRQYQTMLAKVQSOLVES 168
 KLLA TDDHS-----SLSD FICMDHVDILQQKIDEIPIIKQQVTNIRQHYKSIKDRIENQLVAV 174



SACE KLTDVTQKFQSKFGIDNLMETN--VAEQFSRELTDLKDLAEIMNSLTQHFDKTL LLLQDK 230
 KLTH RMKGLRDEFSSKFGDQCRENLK--LNEEFTNEADQLEQELADFLKSFTDHF DKSALSSR 226
 KLLA KLKCLR TYFDSHF SRDSKNNL FKLLES DYVTELNEFENELADFLRSITDHF DKTILKEQ 234



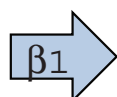
SACE KIDNDEREELFKVVQGD DKELYNIFKTLHEVIDDVKTI LNLGQFLQAKIKEKTELHSEV 290
 KLTH SVSPEDAQNLF EIVERDDKDLAAINSL LQDAAIDVASFVRKVNML LDERDADKAKMQATL 286
 KLLA QIPLPDLKELFQIVKKDDTQLENIRELVFETGLEVKAFS KKVNETISEIMDKIGGFHLLA 294



SACE SEIINDFN RNLEYLLIFKDISN LIDSFKN SCTQDIQTTKELCEFYDNFEESYGNLVLEAK 350
 KLTH SKLLTEL RKHEEYISVFEGISALIQKFKASCLEDIRQTRNLLDFYANFERSYHNLLKEVK 346
 KLLA SKIVTELEKCEEYLSIFQKIANLVFVYKESC IKKIEQVQQLCEFYDKFKLGYKNLLRERD 354

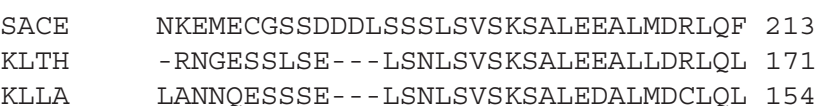
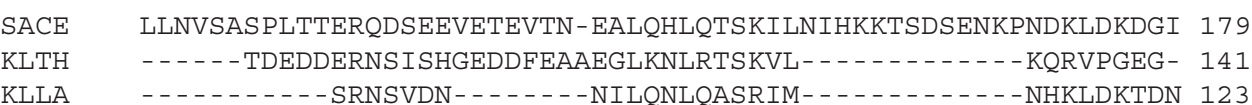
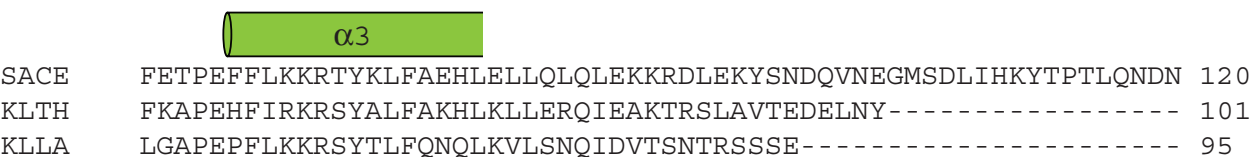
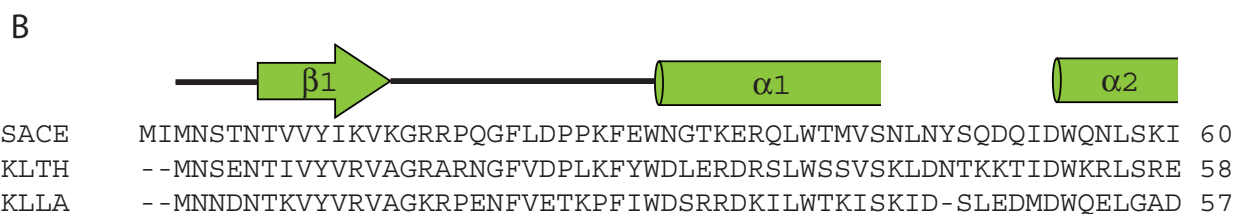
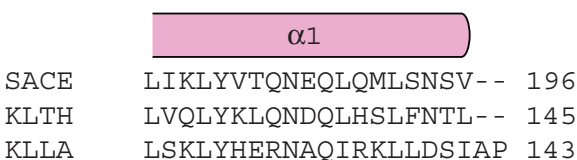
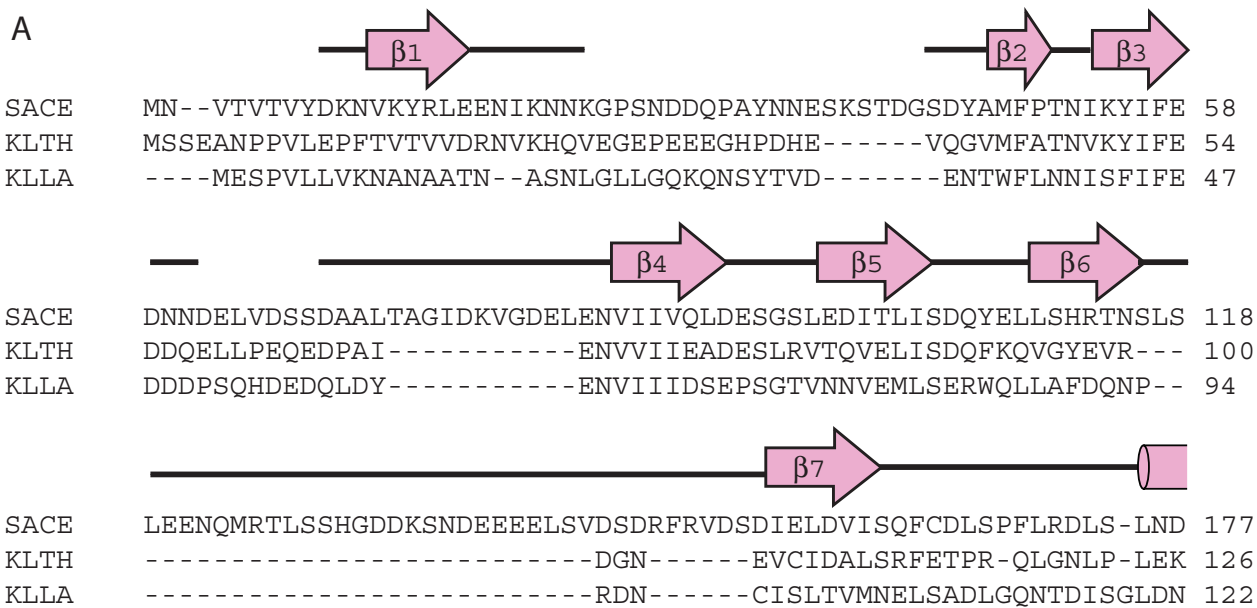


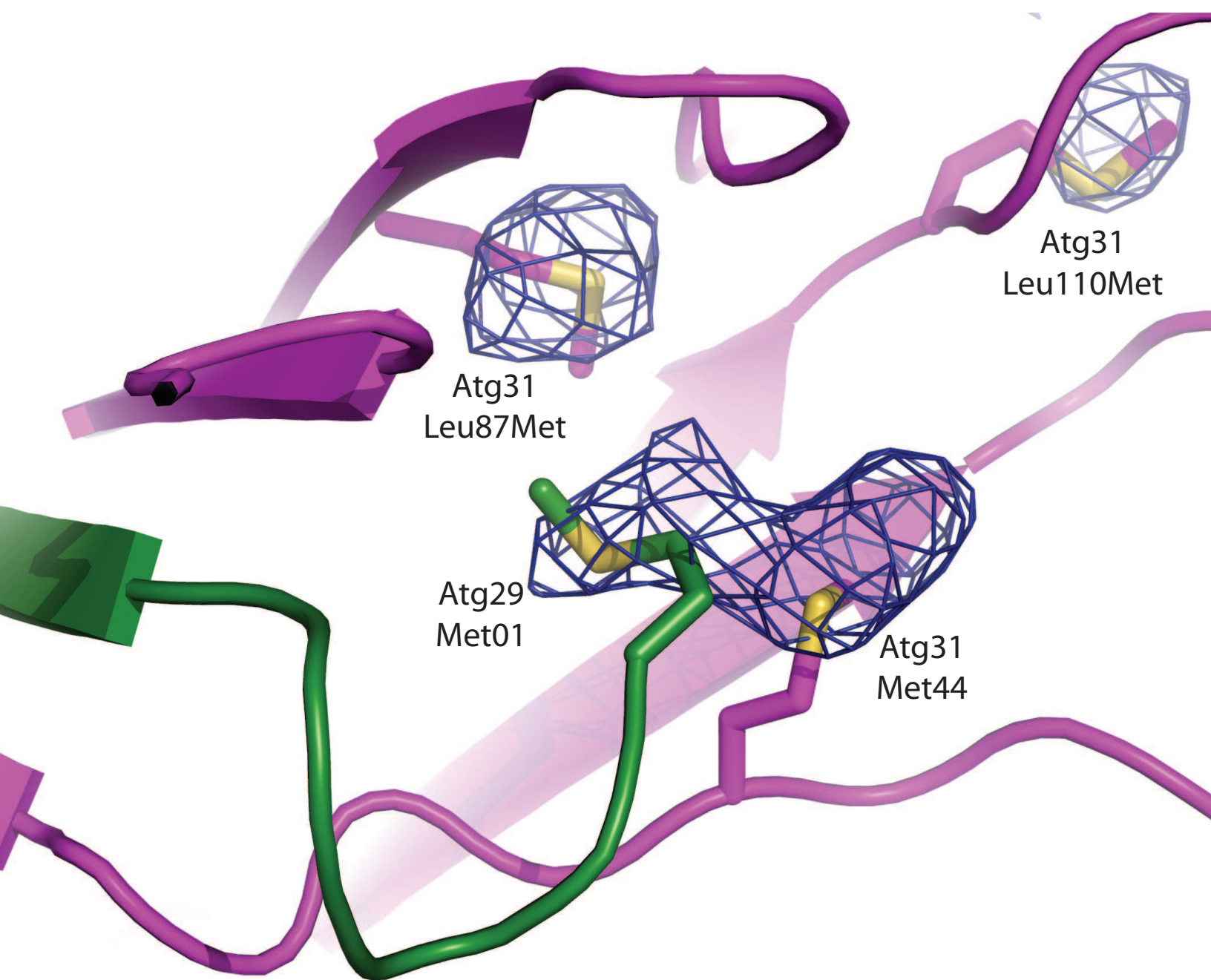
SACE RRKDVANRMKTILK DCEKQLQN LDAQDQEERQNFIAENGTYLPETIWP GKIDDFSSLYTL 410
 KLTH RRKETAAKLSQILK SCETQLEQINTADLRERQMFLLENGNYLPETIWPDEIGSL SPLYTL 406
 KLLA RRKATALQMEKILKECQEKLQALS DADLDQRQQFLLENGDYLPENIWP GYIDDMESMYSF 414



SACE NYNVKNP-- 417
 KLTH NYEVRKV-- 413
 KLLA EYSIHNVPN 423

Supplemental Figure 2





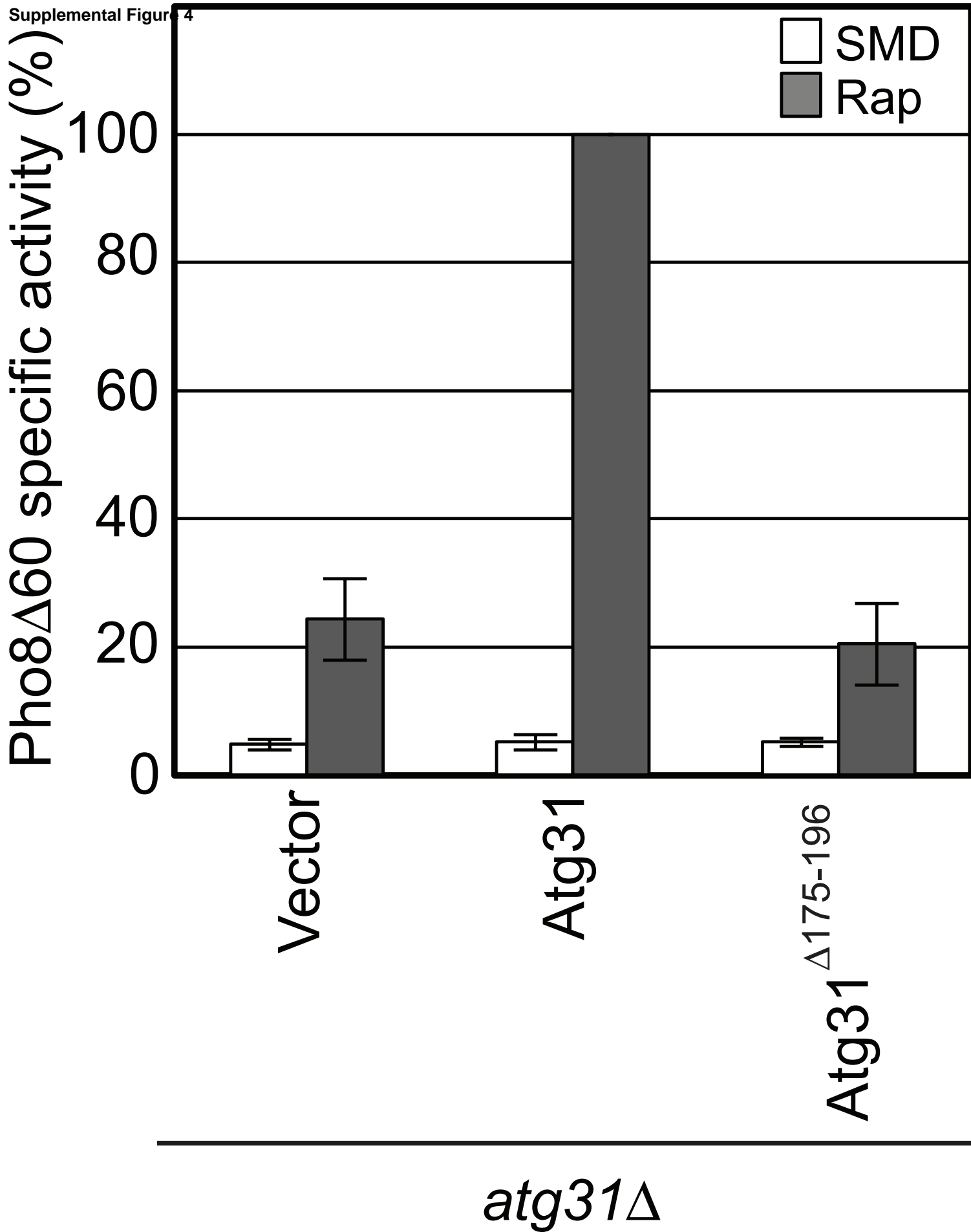


Figure S4