

Figure S1

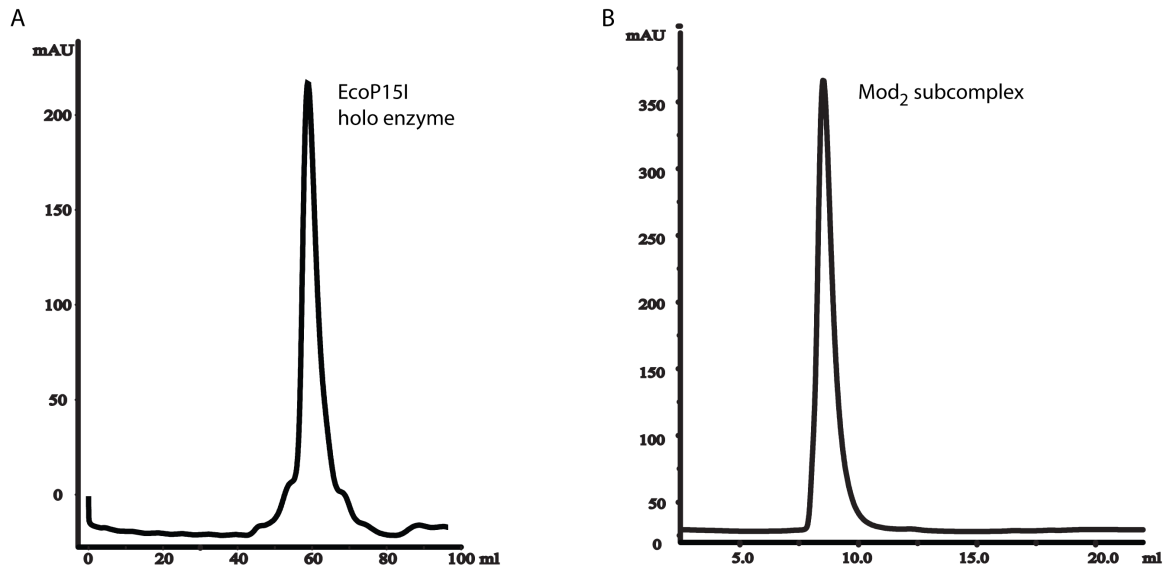


Figure S1. Size-exclusion Chromatography. Single elution peaks in the Superdex 200 profile of EcoP151 holoenzyme (A) and the Superdex 75 profile of Mod<sub>2</sub> subcomplex (B). Peak fractions were immediately used in SAXS and AU experiments.

Figure S2

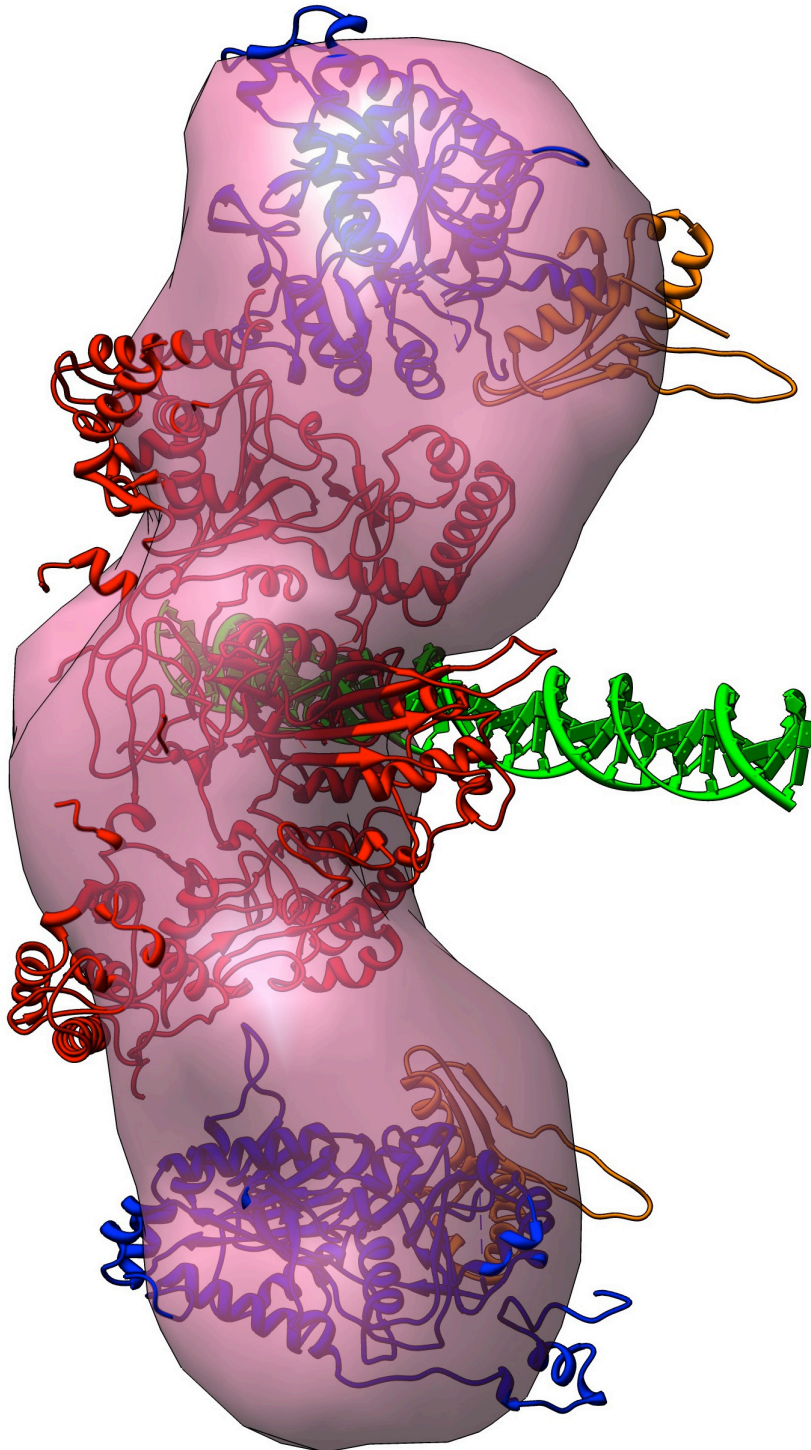


Figure S2. Modeling of DNA into the SAXS envelope. A 48mer B-DNA is positioned within the methyltransferase (Mod) subunits. The path of DNA is based on superposition of methyltransferase domains of Mod and DNA bound M.TaqI (pdb id; 1g38).