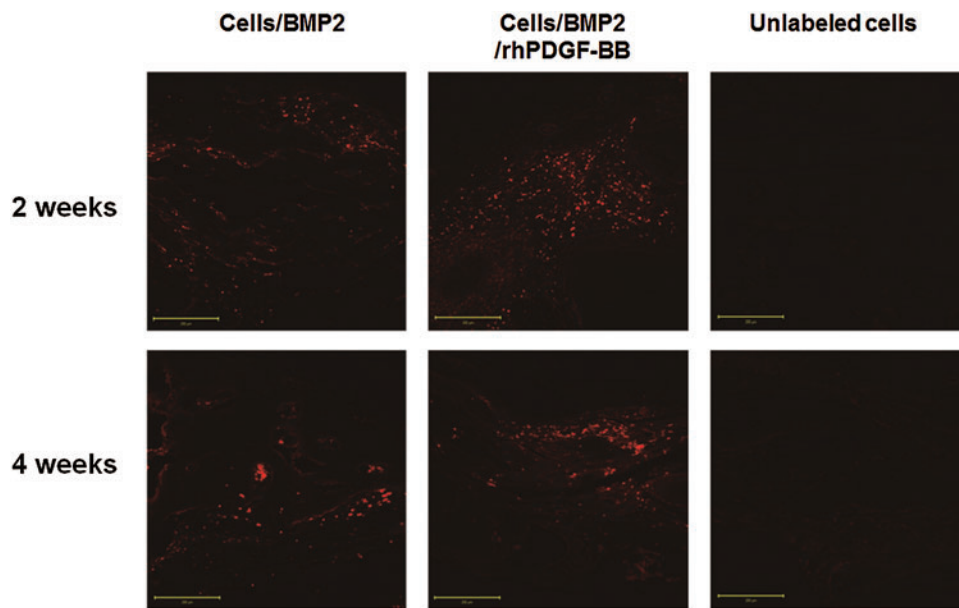


Supplementary Data



SUPPLEMENTARY FIG. S1. AdBMP2-transfected BMSCs labeled with cell tracker (CM-DiI) in the regenerated bone tissue under a confocal laser-scanning microscope at 2 and 4 weeks after surgery (X200). In both the BMSC/*BMP2* and BMSC/*BMP2*/rhPDGF-BB groups, implanted AdBMP2-transfected BMSCs were detected at 2 and 4 weeks; the cells were distributed widely throughout the defect at 2 weeks after surgery and still remained at 4 weeks, although with a lower staining density. Scale bar: 200 μ m. AdBMP-2, adenoviral vector containing the *BMP2* gene; BMSC, bone marrow stromal cell; CM-DiI, chloromethylbenzamido-1,1'-dioctadecyl-3,3,3'-tetramethylindocarbocyanine perchlorate.