

Treg origin in pregnancy

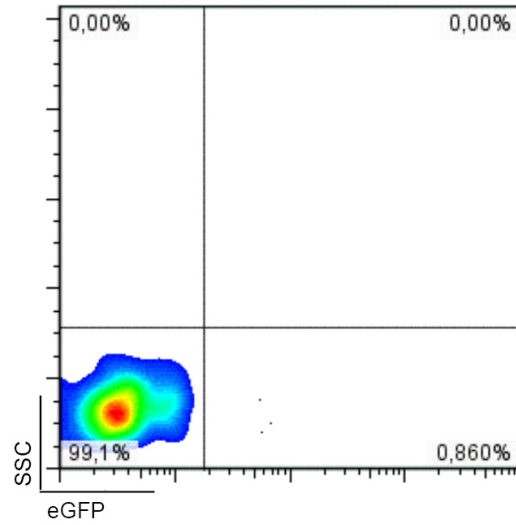


Figure S1. Purity of the eGFP sorted cells used for reconstitution of the Rag-1^{-/-} mice.

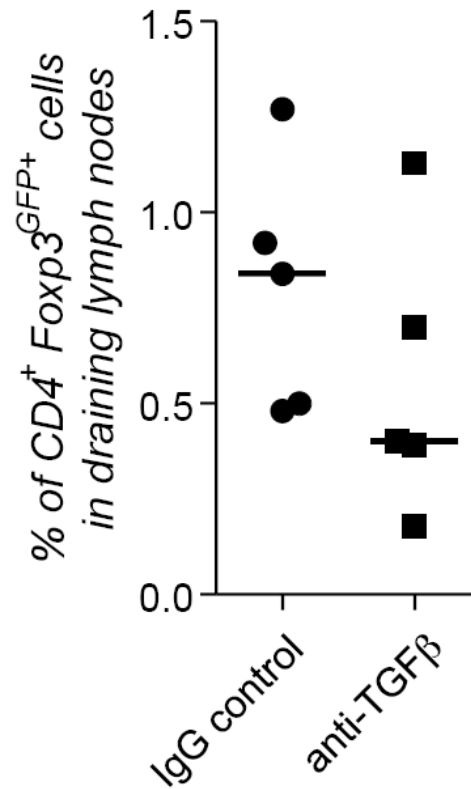


Figure S2. Anti-TGF- β affected the expansion of splenic Tregs but did not show any effect on the population of Tregs in the draining lymph nodes during pregnancy. A neutralizing antibody against TGF- β was injected subcutaneously in pregnant reconstituted Rag1^{-/-} on day 0 and day 7 of pregnancy. As a control group animals were injected with anti-IgG. The percentage of CD4⁺Foxp3^{GFP+} cells was analyzed in the uterine draining lymph nodes on day 12 of pregnancy (d12). (n=5). Data are expressed as single dots with medians and were analyzed by using the Mann-Whitney-U test.