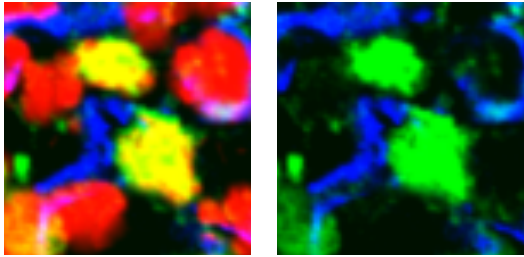


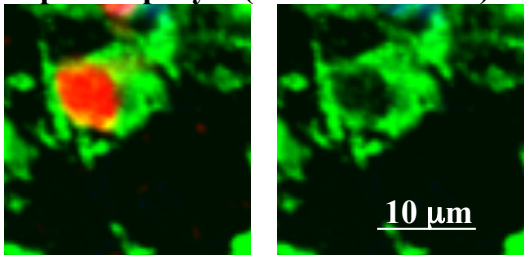
**a**

<b>DAPI</b>	<b>Pref-1</b>	<b>Pref-1</b>
<b>Pref-1</b>	<b>C/EBP <math>\alpha</math></b>	<b>C/EBP <math>\alpha</math></b>
<b>C/EBP <math>\alpha</math></b>	<b>CD31</b>	<b>CD31</b>
<b>CD31</b>		

**adipocytes (C/EBP $\alpha$ <sup>+</sup>Pref-1<sup>-</sup>)**

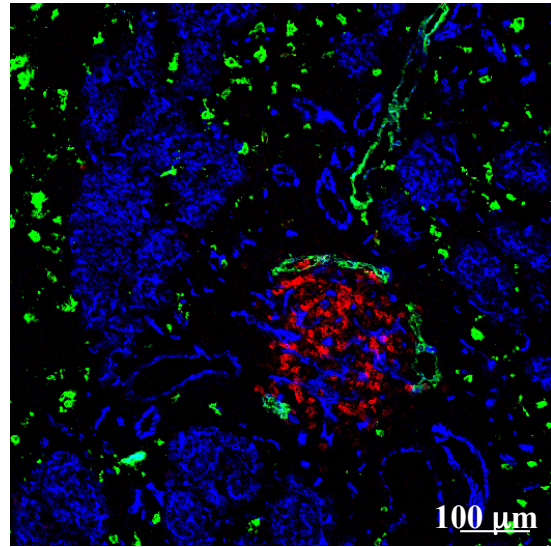


**pre-adipocyte (C/EBP $\alpha$ -Pref-1<sup>+</sup>)**



**b**

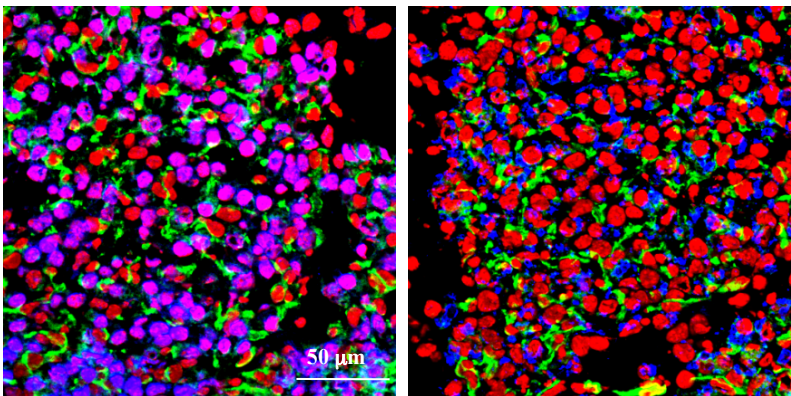
<b>Lyve-1</b>	<b>CD4</b>	<b>CD31</b>
---------------	------------	-------------



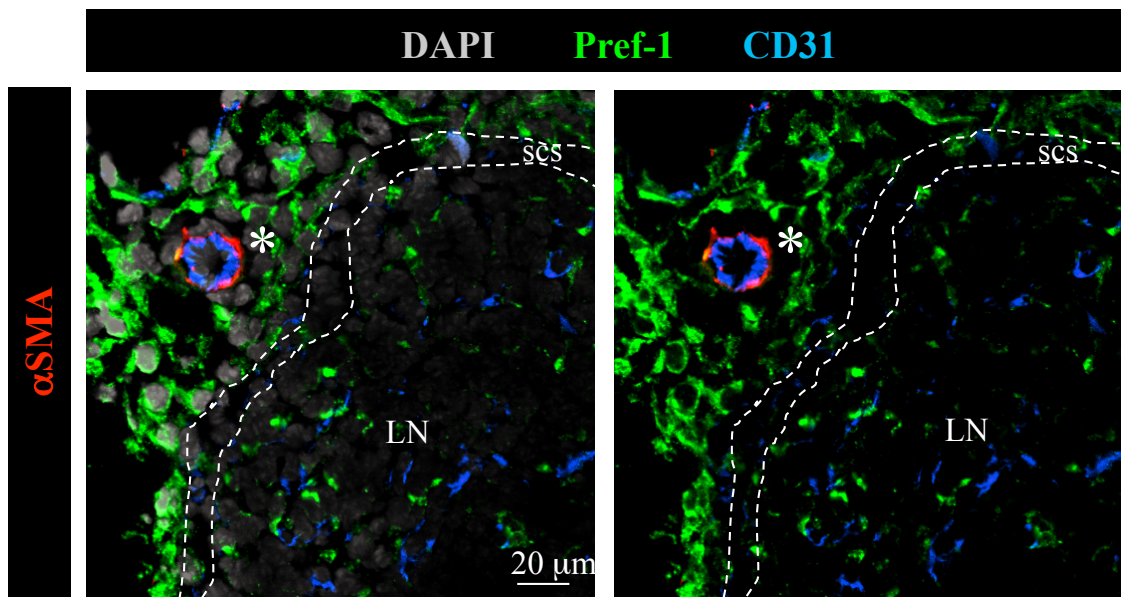
**c**

**E18 inguinal fat pad adipocyte cluster**

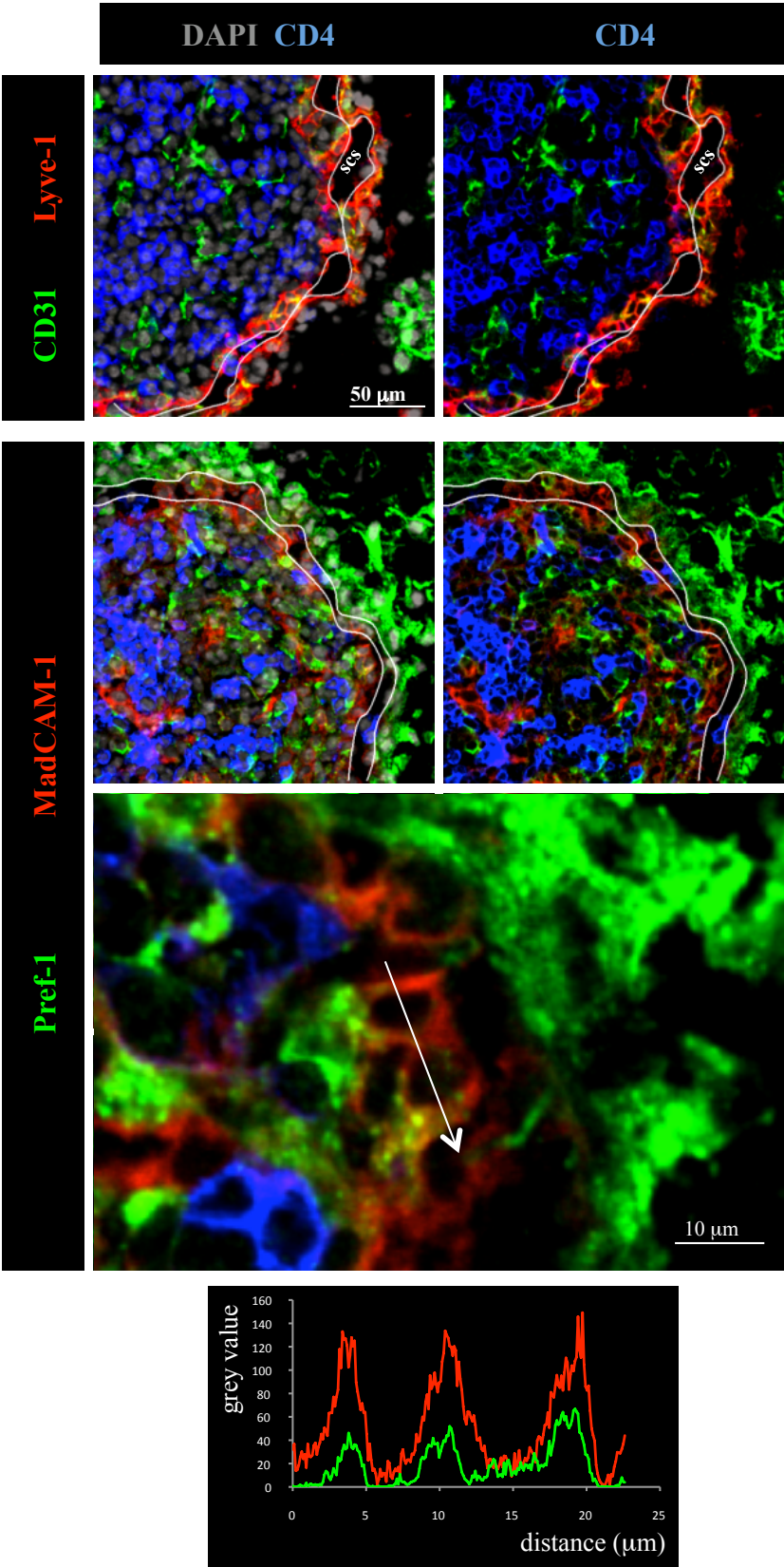
<b>DAPI</b>	<b>CD31</b>
<b>C/EBP <math>\alpha</math></b>	<b>Perilipin</b>



E18 inguinal LN

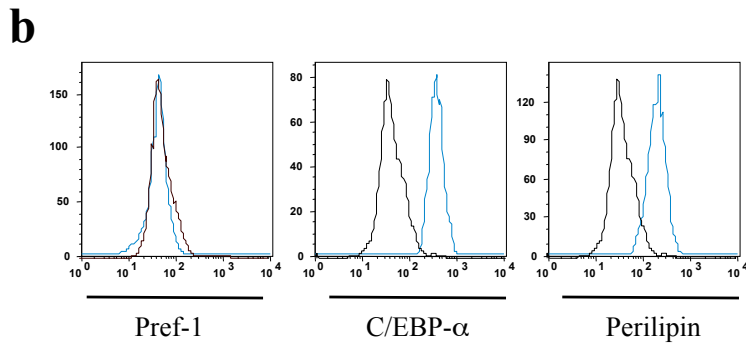
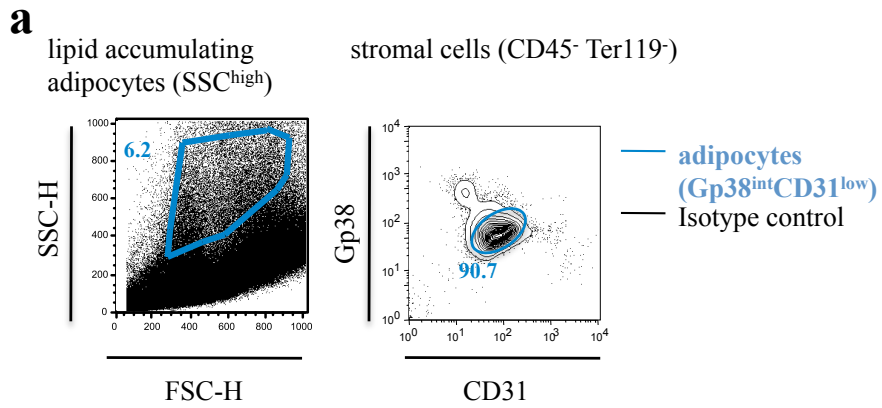


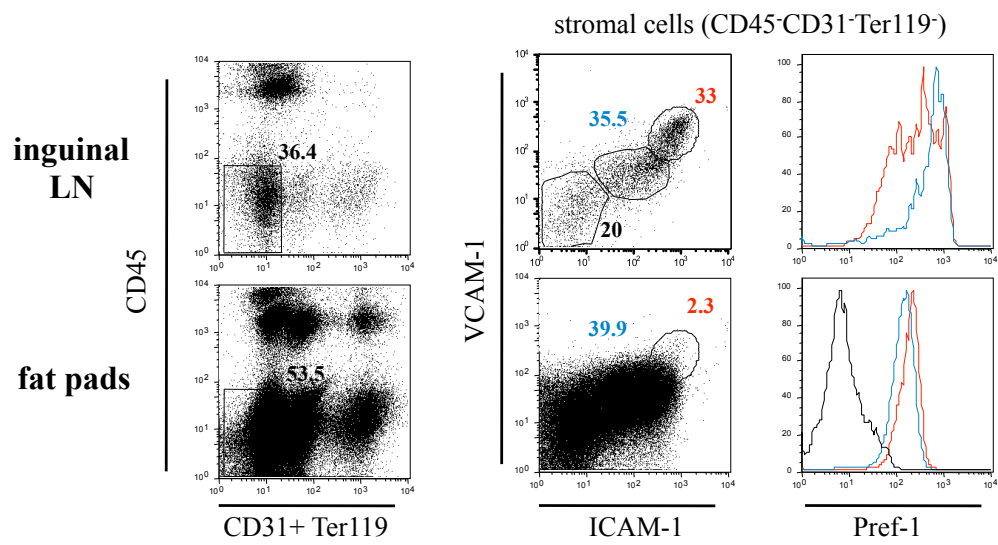
E18 inguinal LN: LTi cells (CD4<sup>+</sup>) and LTo cells (Pref-1<sup>+</sup>MAdCAM-1<sup>+</sup>)



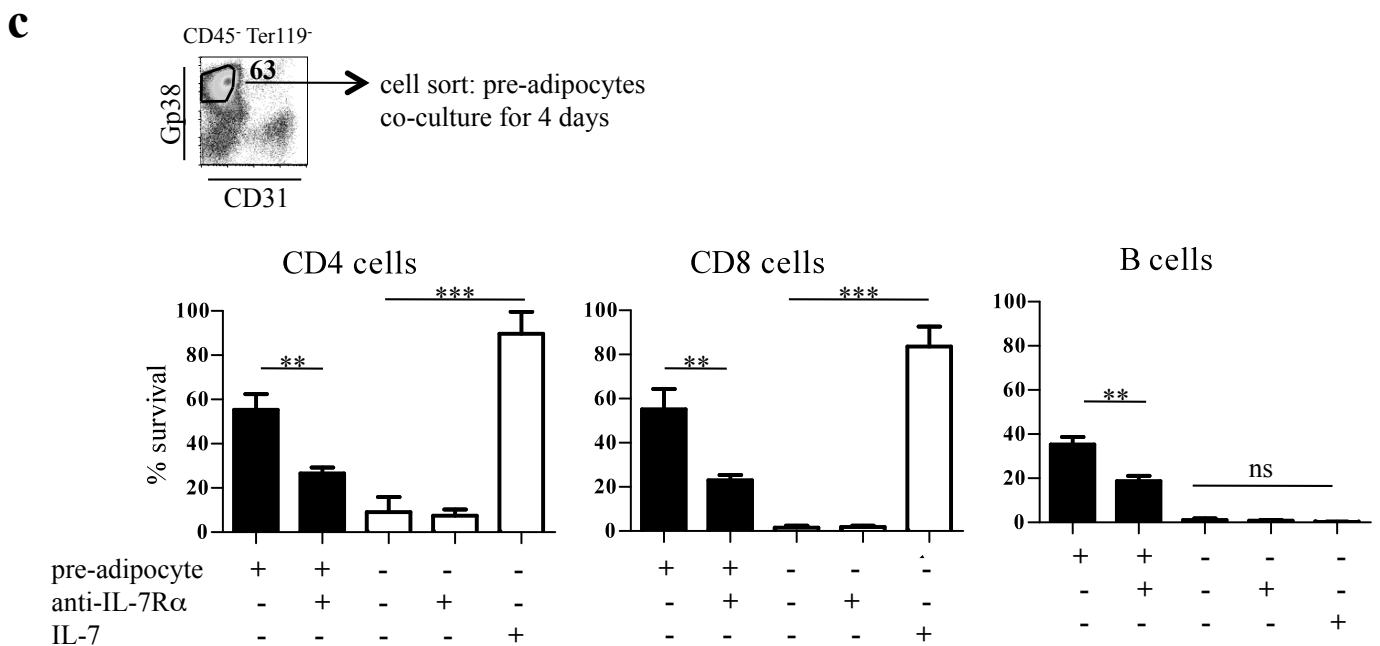
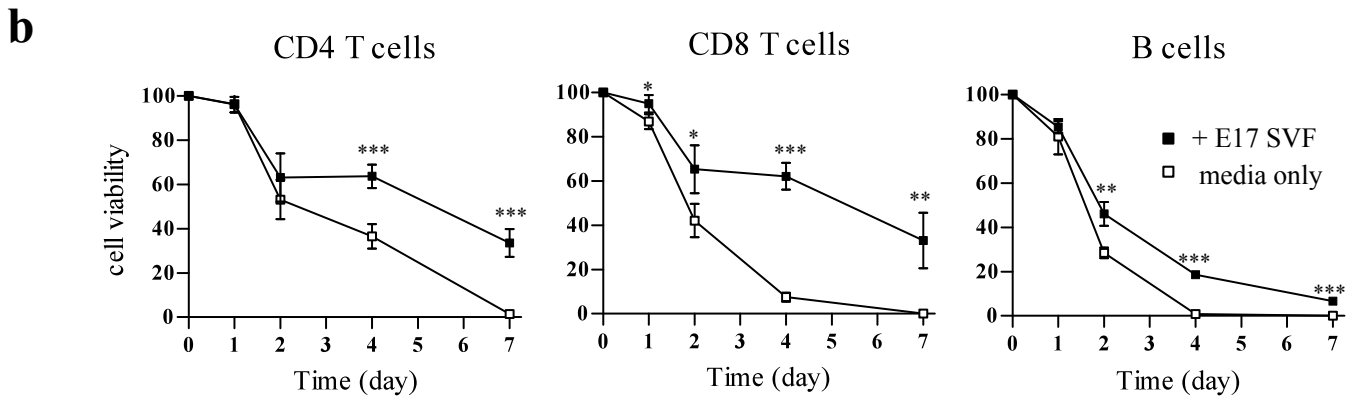
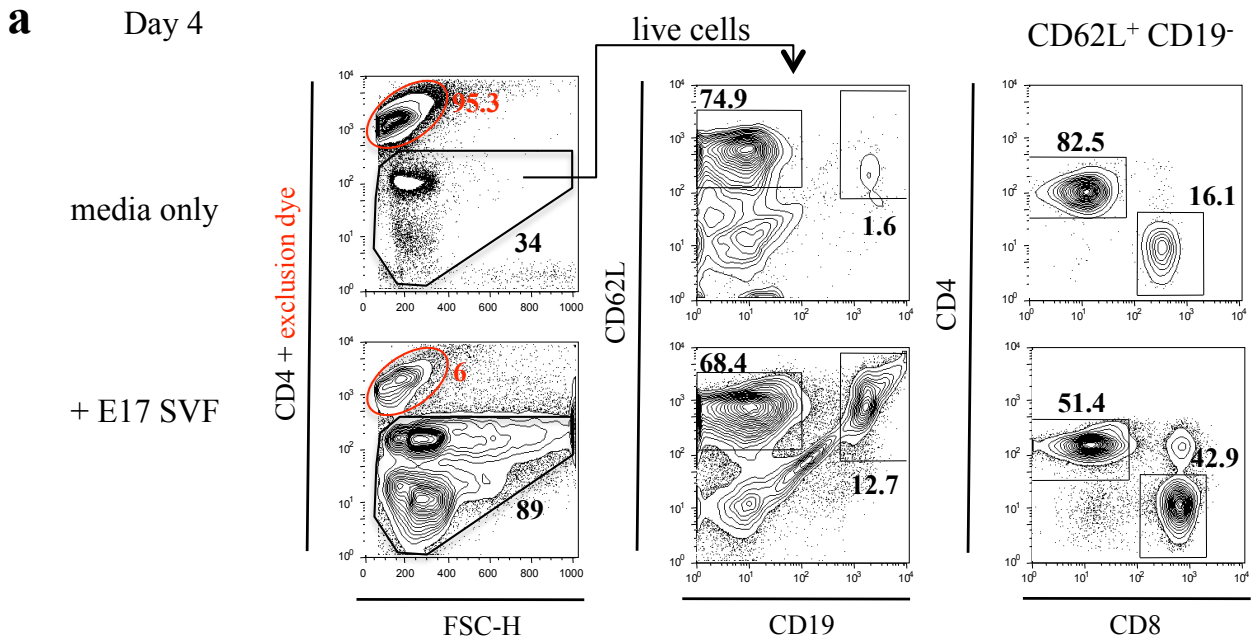
Supplementary Figure 3

## E18 fat pads





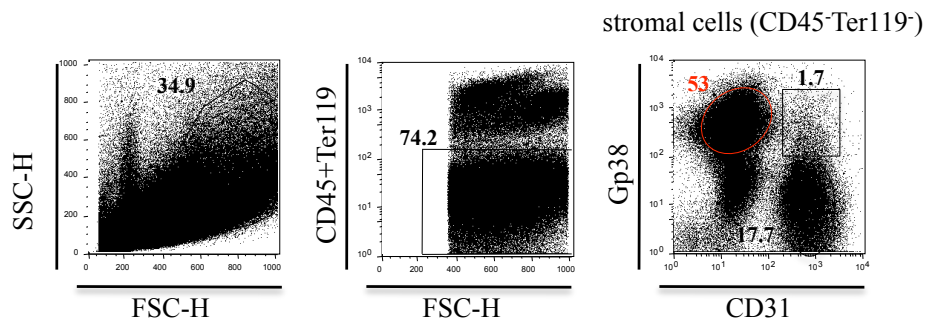
- Immature LN stromal cells (ICAM-1<sup>int</sup>VCAM-1<sup>int</sup>)
- LTo cells (ICAM-1<sup>high</sup>VCAM-1<sup>high</sup>)
- Isotype control



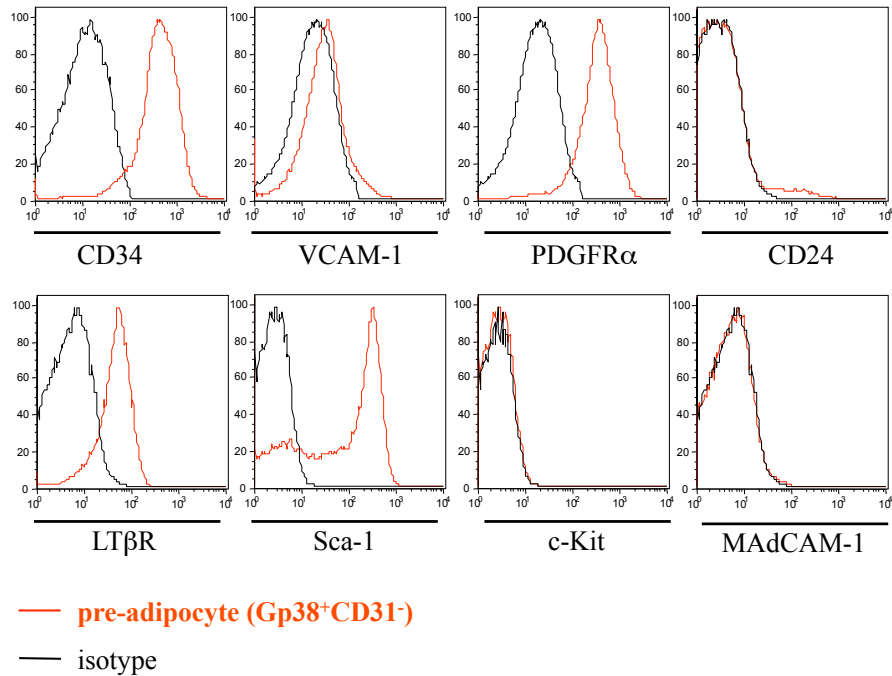
Supplementary Figure 6

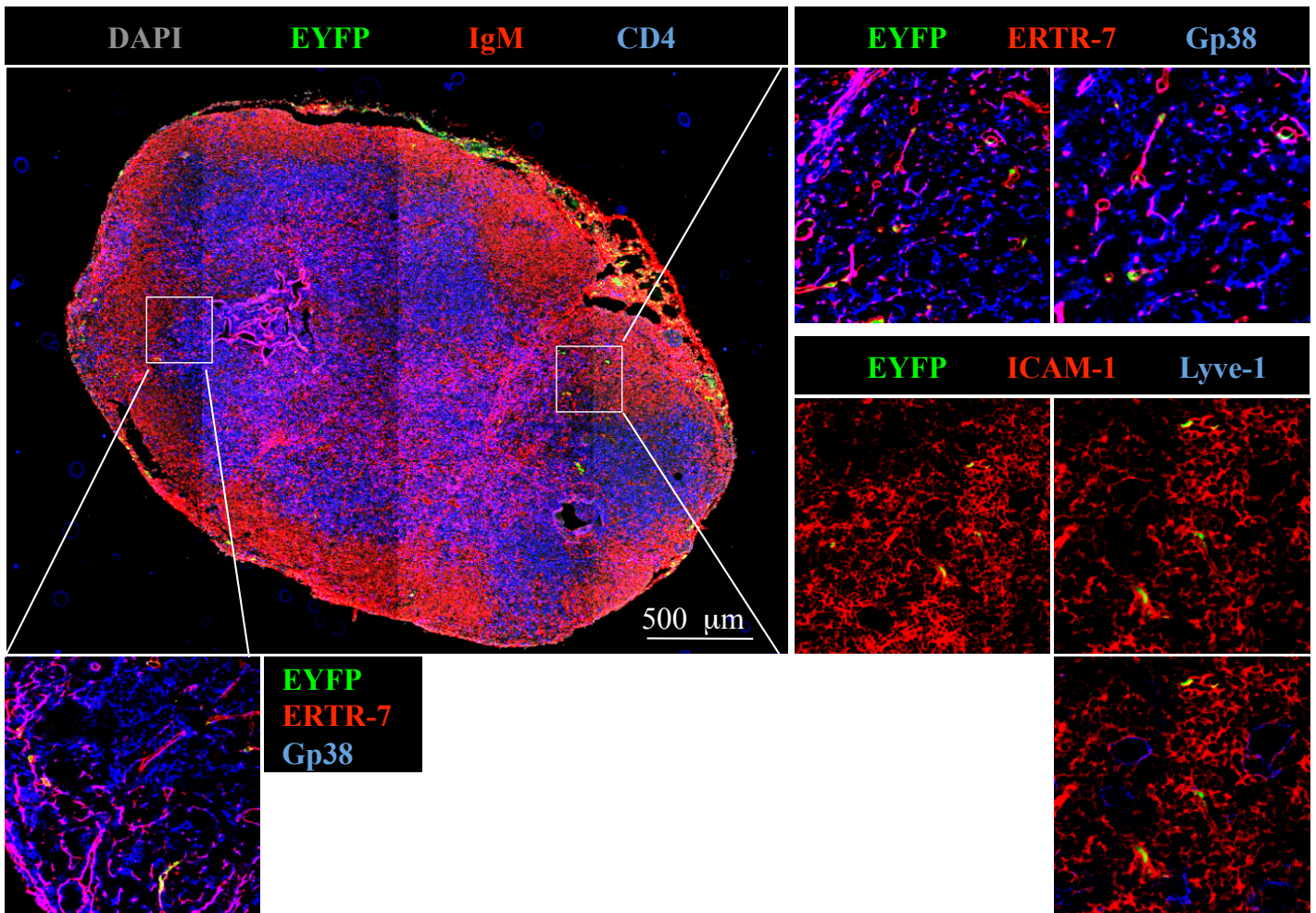
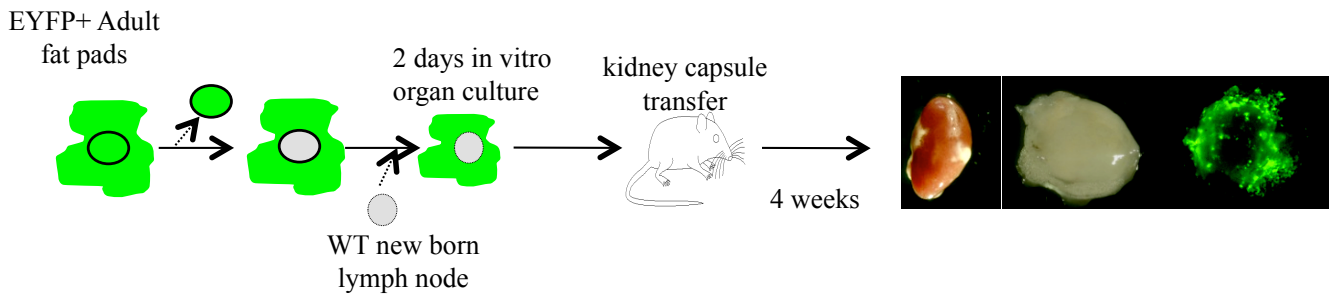
## Adult SVF

**a**



**b**





Supplementary Figure 8



	Forward	Reverse
<i>Hprt</i>	CCAGCGTCGTGATTAGCGATG	ATAGCCCCCCTTGAGCACACAG
<i>Ppar<math>\gamma</math>1</i>	CCACCAACTTCGGAATCAGCT	TTTGTGGATCCGGCAGTTAAGA
<i>Ppar<math>\gamma</math>2</i>	ATGGGTGAAACTCTGGGAGATTCT	CTTGGAGCTTCAGGTCATATTTGTA
<i>Ppara<math>\alpha</math></i>	GCGTACGGCAATGGCTTTAT	GAACGGCTTCCTCAGGTTCTT
<i>Adiponectin</i>	AAGAAGGACAAGGCCGTTCTCTT	GCTATGGGTAGTTGCAGTCAGTT
<i>Resistin</i>	CTGTCCAGTCTATCCTTGCACAC	CAGAAGGCACAGCAGTCTTGA
<i>Cxcl13</i>	CATAGATCGGATTCAAGTTACGCC	TCTTGGTCCAGATCACAACCTCA
<i>Ccl19</i>	CCTTAGTGTGGTGAACACAACA	GGGGTCTAATGATGCGGAA
<i>Il-7</i>	TTCCTCCACTGATCCTTGTCT	AGCAGCTTCCTTTGTATCATCAC