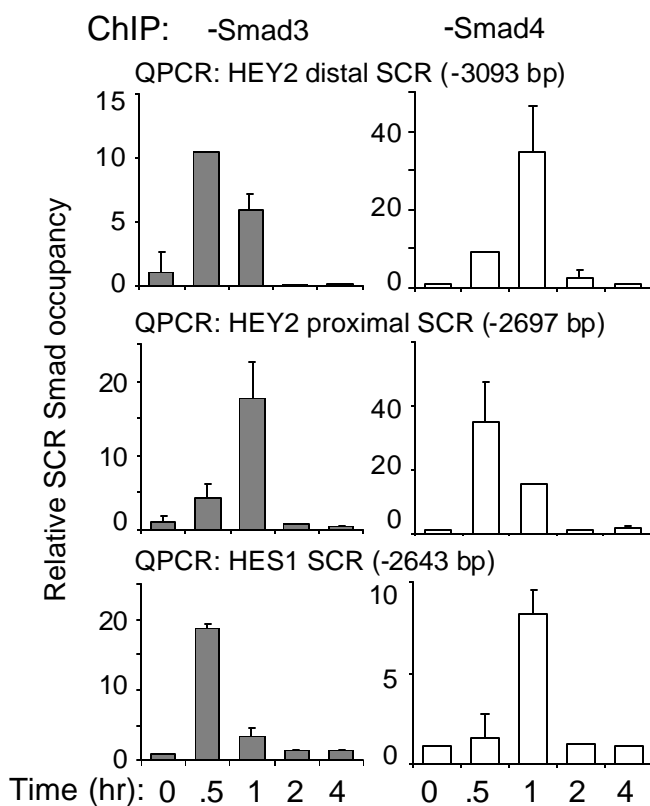


# Integration of TGF- $\beta$ and Jagged1/Notch Signalling in Epithelial-to-Mesenchymal Transition

Jiri Zavadil, Lukas Cermak, Noemi Soto-Nieves & Erwin P. Böttinger

Departments of Medicine and Molecular Genetics, Albert Einstein College of Medicine, 1300 Morris Park Avenue, Bronx, New York 10461, U.S.A

## Supplementary Figure S2



### Fig. S2 TGF- $\beta$ induces rapid *in vivo*

binding of endogenous Smad3/Smad4 protein complexes with SCR elements in HEY2 and HES1 promoters.

Bar graphs show relative amount of distal HEY2 Smad-binding element core repeat (SCR) (-3093 bp), proximal HEY2 SCR (-2697 bp) and HES1 SCR (-2643 bp), determined by quantitative, sequence-specific PCR of chromatin DNA immunoprecipitated with anti-Smad3 (grey bars) or anti-Smad4 (open bars) antibodies in keratinocytes upon treatment with TGF- $\beta$ . The baseline unit was set at 1 at Time 0 hr (untreated cells).