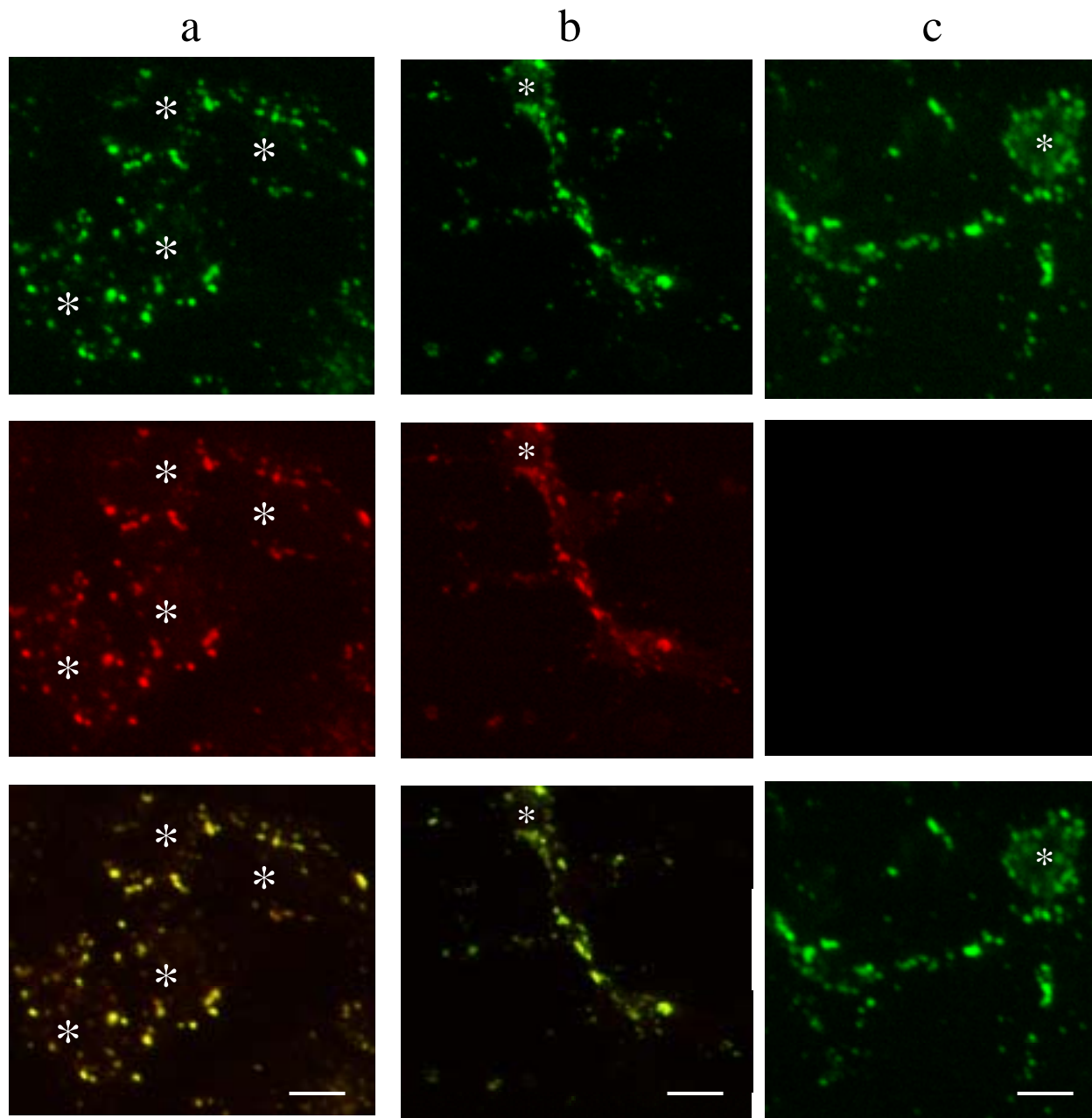


Suppl.2



Supplementary information 2

(Columns a and b) Ephrin-B1 is precisely co-localized to the patches containing EphB2-Fc. After stimulation of SK-N-MC cells (column a) or E14 primary cortical neurons (column b) with pre-clustered EphB2-Fc as described in the legend of Fig. 4, the cells were immunostained with anti-Fc (green) and anti-ephrin-B1 (red) antibodies. (Column c) The rhodamine-labeled secondary antibody used does not recognize the pre-clustered Fc-fusion proteins in E14 primary cortical neurons. Cortical neurons were immunostained after stimulation with pre-clustered EphB2-Fc (top, green) and rhodamine-labeled secondary antibody without prior incubation with primary antibody (middle). Merged images are shown in the bottom panels. Asterisks show the positions of the nucleus (column a) and the cell body of the neuron (columns b, c). Scale bars, 10 μm